

Home report

412 West Main Street, Richmond, Cache County, Utah, United States, 84333



Total Area: 2164 sq. ft

Below Ground: 0 sq. ft, Floor 2: 1324 sq. ft, Floor 3: 171 sq. ft, Floor 4: 669 sq. ft
Excluded: Utility 303 sq. ft, Hall 52 sq. ft, Storage 195 sq. ft, Garage 422 sq. ft, Porch 111 sq. ft, Low ceiling 208 sq. ft, Walls: 265 sq. ft

Property summary

 **4** Floors

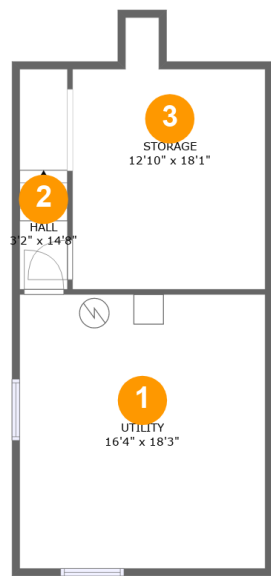
 **5** Bedrooms

 **2** Bathrooms

 **1** Garages

Home report

412 West Main Street, Richmond, Cache County, Utah, United States, 84333



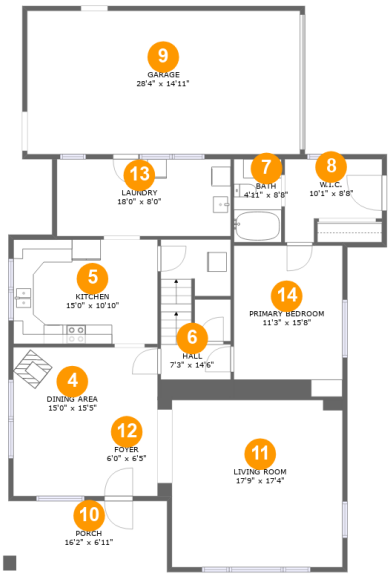
Room dimensions

Floor 1 Below ground Total:0sqft Excluded: 550sqft

#		Max Dimensions	sqft	Included
1	Utility	16'4" x 18'3"	298 sq. ft	No
2	Hall	3'2" x 14'8"	47 sq. ft	No
3	Storage	12'10" x 18'1"	195 sq. ft	No

Home report

412 West Main Street, Richmond, Cache County, Utah, United States, 84333



Room dimensions

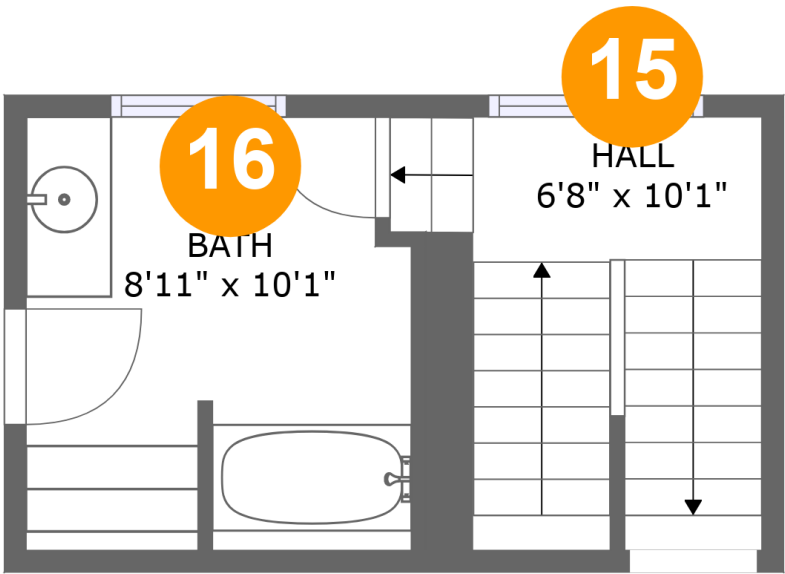
Floor 2

Total:1324sqft

Excluded: 533sqft

#		Max Dimensions	sqft	Included
4	Dining Area	15'0" x 15'5"	193 sq. ft	Yes
5	Kitchen	15'0" x 10'10"	163 sq. ft	Yes
6	Hall	7'3" x 14'6"	98 sq. ft	Yes
7	Bath	4'11" x 8'8"	43 sq. ft	Yes
8	W.I.C.	10'1" x 8'8"	70 sq. ft	Yes
9	Garage	28'4" x 14'11"	422 sq. ft	No
10	Porch	16'2" x 6'11"	111 sq. ft	No
11	Living Room	17'9" x 17'4"	307 sq. ft	Yes
12	Foyer	6'0" x 6'5"	38 sq. ft	Yes
13	Laundry	18'0" x 8'0"	144 sq. ft	Yes
14	Primary Bedroom	11'3" x 15'8"	177 sq. ft	Yes

412 West Main Street, Richmond, Cache County, Utah, United States, 84333

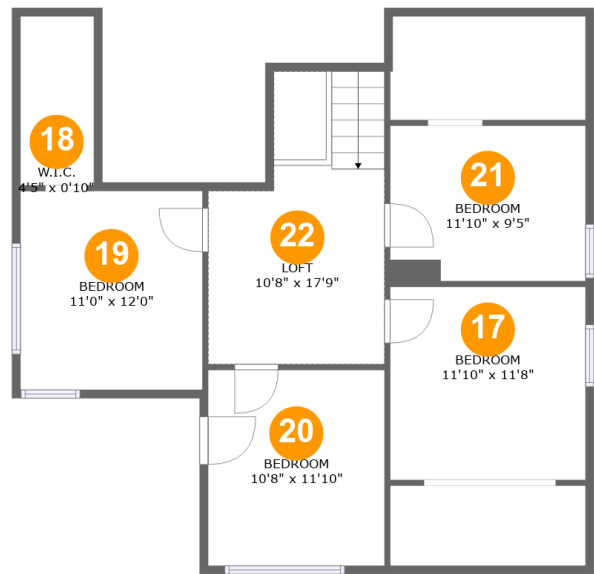


Room dimensions

Floor 3 Total:171sqft Excluded: 0sqft

#		Max Dimensions	sqft	Included
15	Hall	6'8" x 10'1"	80 sq. ft	Yes
16	Bath	8'11" x 10'1"	86 sq. ft	Yes

412 West Main Street, Richmond, Cache County, Utah, United States, 84333



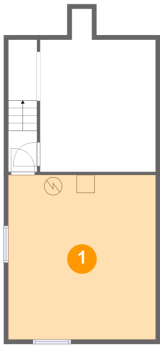
Room dimensions

Floor 4 Total:669sqft Excluded: 208sqft

#		Max Dimensions	sqft	Included
17	Bedroom	11'10" x 11'8"	124 sq. ft	Yes
18	W.I.C.	4'5" x 0'10"	4 sq. ft	Yes
19	Bedroom	11'0" x 12'0"	132 sq. ft	Yes
20	Bedroom	10'8" x 11'10"	126 sq. ft	Yes
21	Bedroom	11'10" x 9'5"	98 sq. ft	Yes
22	Loft	10'8" x 17'9"	160 sq. ft	Yes

412 West Main Street, Richmond, Cache County, Utah, United States, 84333

1 Floor 1 - Utility



Max Dimensions: 16'4" x 18'3"
Calculated Area: 298 sq. ft
Included: No

Heated: Yes
Finished: No
Enclosed: Yes
Contiguous: Yes
Permitted: Yes
Wet space: No
Addition: No
Conversion: No

2 Floor 1 - Hall

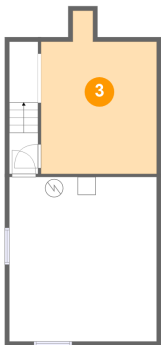


Max Dimensions: 3'2" x 14'8"
Calculated Area: 47 sq. ft
Included: No

Heated: Yes
Finished: No
Enclosed: Yes
Contiguous: Yes
Permitted: Yes
Wet space: No
Addition: No
Conversion: No

412 West Main Street, Richmond, Cache County, Utah, United States, 84333

3 Floor 1 - Storage



Max Dimensions: 12'10" x 18'1"
Calculated Area: 195 sq. ft
Included: No

Heated: No
Finished: No
Enclosed: No
Contiguous: Yes
Permitted: Yes
Wet space: No
Addition: No
Conversion: No

4 Floor 2 - Dining Area



Max Dimensions: 15'0" x 15'5"
Calculated Area: 193 sq. ft
Included: Yes

Heated: Yes
Finished: Yes
Enclosed: Yes
Contiguous: Yes
Permitted: Yes
Wet space: No
Addition: No
Conversion: No

5 Floor 2 - Kitchen



Max Dimensions: 15'0" x 10'10"
Calculated Area: 163 sq. ft
Included: Yes

Heated: Yes
Finished: Yes
Enclosed: Yes
Contiguous: Yes
Permitted: Yes
Wet space: No
Addition: No
Conversion: No

412 West Main Street, Richmond, Cache County, Utah, United States, 84333

6 Floor 2 - Hall



Max Dimensions: 7'3" x 14'6"
Calculated Area: 98 sq. ft
Included: Yes

Heated: Yes
Finished: Yes
Enclosed: Yes
Contiguous: Yes
Permitted: Yes
Wet space: No
Addition: No
Conversion: No

7 Floor 2 - Bath



Max Dimensions: 4'11" x 8'8"
Calculated Area: 43 sq. ft
Included: Yes

Heated: Yes
Finished: Yes
Enclosed: Yes
Contiguous: Yes
Permitted: Yes
Wet space: Yes
Addition: No
Conversion: No

8 Floor 2 - W.I.C.



Max Dimensions: 10'1" x 8'8"
Calculated Area: 70 sq. ft
Included: Yes

Heated: Yes
Finished: Yes
Enclosed: Yes
Contiguous: Yes
Permitted: Yes
Wet space: No
Addition: No
Conversion: No

412 West Main Street, Richmond, Cache County, Utah, United States, 84333

9 Floor 2 - Garage



Max Dimensions: 28'4" x 14'11"
Calculated Area: 422 sq. ft
Included: No

Heated: No
Finished: No
Enclosed: Yes
Contiguous: Yes
Permitted: Yes
Wet space: No
Addition: No
Conversion: No

10 Floor 2 - Porch



Max Dimensions: 16'2" x 6'11"
Calculated Area: 111 sq. ft
Included: No

Heated: No
Finished: Yes
Enclosed: No
Contiguous: Yes
Permitted: Yes
Wet space: No
Addition: No
Conversion: No

11 Floor 2 - Living Room



Max Dimensions: 17'9" x 17'4"
Calculated Area: 307 sq. ft
Included: Yes

Heated: Yes
Finished: Yes
Enclosed: Yes
Contiguous: Yes
Permitted: Yes
Wet space: No
Addition: No
Conversion: No

412 West Main Street, Richmond, Cache County, Utah, United States, 84333

12 Floor 2 - Foyer



Max Dimensions: 6'0" x 6'5"
Calculated Area: 38 sq. ft
Included: Yes

Heated: Yes
Finished: Yes
Enclosed: Yes
Contiguous: Yes
Permitted: Yes
Wet space: No
Addition: No
Conversion: No

13 Floor 2 - Laundry



Max Dimensions: 18'0" x 8'0"
Calculated Area: 144 sq. ft
Included: Yes

Heated: Yes
Finished: Yes
Enclosed: Yes
Contiguous: Yes
Permitted: Yes
Wet space: No
Addition: No
Conversion: No

14 Floor 2 - Primary Bedroom

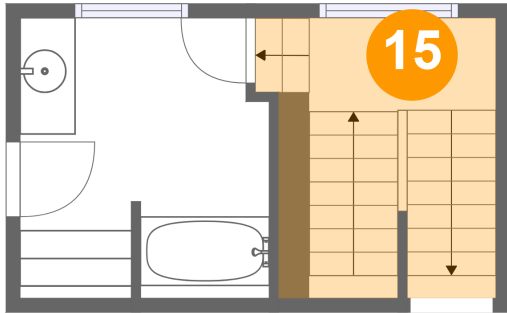


Max Dimensions: 11'3" x 15'8"
Calculated Area: 177 sq. ft
Included: Yes

Heated: Yes
Finished: Yes
Enclosed: Yes
Contiguous: Yes
Permitted: Yes
Wet space: No
Addition: No
Conversion: No

412 West Main Street, Richmond, Cache County, Utah, United States, 84333

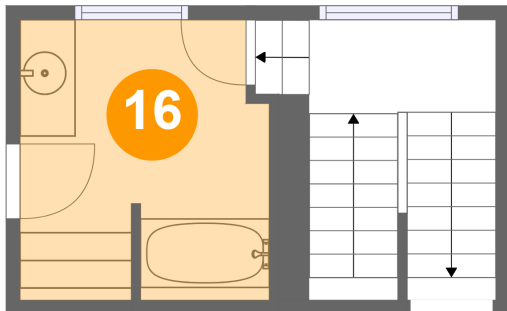
15 Floor 3 - Hall



Max Dimensions: 6'8" x 10'1"
Calculated Area: 80 sq. ft
Included: Yes

Heated: Yes
Finished: Yes
Enclosed: Yes
Contiguous: Yes
Permitted: Yes
Wet space: No
Addition: No
Conversion: No

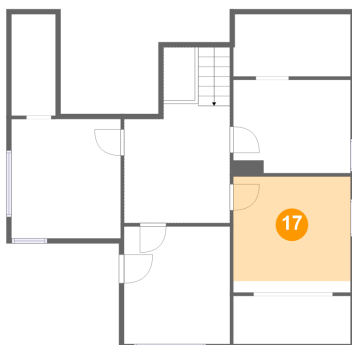
16 Floor 3 - Bath



Max Dimensions: 8'11" x 10'1"
Calculated Area: 86 sq. ft
Included: Yes

Heated: Yes
Finished: Yes
Enclosed: Yes
Contiguous: Yes
Permitted: Yes
Wet space: Yes
Addition: No
Conversion: No

17 Floor 4 - Bedroom

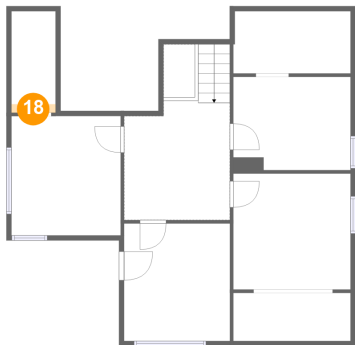


Max Dimensions: 11'10" x 11'8"
Calculated Area: 124 sq. ft
Included: Yes

Heated: Yes
Finished: Yes
Enclosed: Yes
Contiguous: Yes
Permitted: Yes
Wet space: No
Addition: No
Conversion: No

412 West Main Street, Richmond, Cache County, Utah, United States, 84333

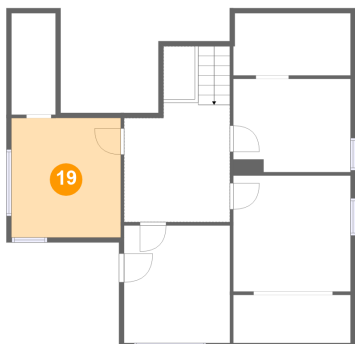
18 Floor 4 - W.I.C.



Max Dimensions: 4'5" x 0'10"
Calculated Area: 4 sq. ft
Included: Yes

Heated: Yes
Finished: Yes
Enclosed: Yes
Contiguous: Yes
Permitted: Yes
Wet space: No
Addition: No
Conversion: No

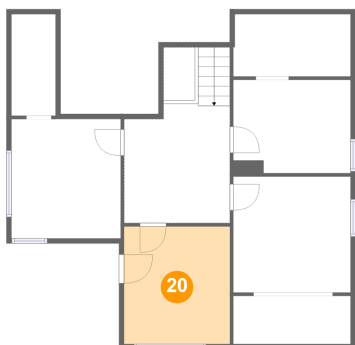
19 Floor 4 - Bedroom



Max Dimensions: 11'0" x 12'0"
Calculated Area: 132 sq. ft
Included: Yes

Heated: Yes
Finished: Yes
Enclosed: Yes
Contiguous: Yes
Permitted: Yes
Wet space: No
Addition: No
Conversion: No

20 Floor 4 - Bedroom

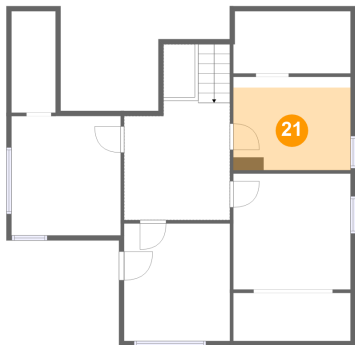


Max Dimensions: 10'8" x 11'10"
Calculated Area: 126 sq. ft
Included: Yes

Heated: Yes
Finished: Yes
Enclosed: Yes
Contiguous: Yes
Permitted: Yes
Wet space: No
Addition: No
Conversion: No

412 West Main Street, Richmond, Cache County, Utah, United States, 84333

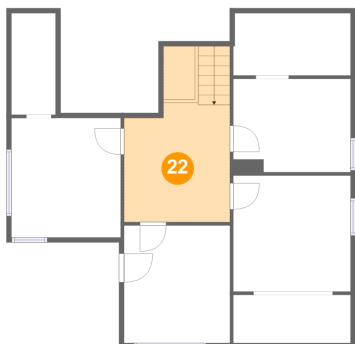
21 Floor 4 - Bedroom



Max Dimensions: 11'10" x 9'5"
Calculated Area: 98 sq. ft
Included: Yes

Heated: Yes
Finished: Yes
Enclosed: Yes
Contiguous: Yes
Permitted: Yes
Wet space: No
Addition: No
Conversion: No

22 Floor 4 - Loft



Max Dimensions: 10'8" x 17'9"
Calculated Area: 160 sq. ft
Included: Yes

Heated: Yes
Finished: Yes
Enclosed: Yes
Contiguous: Yes
Permitted: Yes
Wet space: No
Addition: No
Conversion: No