

Home data report

1919 Sils Ave,Louisville,KY,US



Total Area: 1851 sq. ft

Below Ground: 0 sq. ft, 1st Floor: 1066 sq. ft, 2nd Floor: 785 sq. ft  
Excluded: Utility 257 sq. ft, Bedroom 209 sq. ft, Recreation room 349 sq. ft, Bath 68 sq. ft, Fireplace 11 sq. ft, Low ceiling 19 sq. ft, Storage 25 sq. ft

Property summary

 **3** Floors

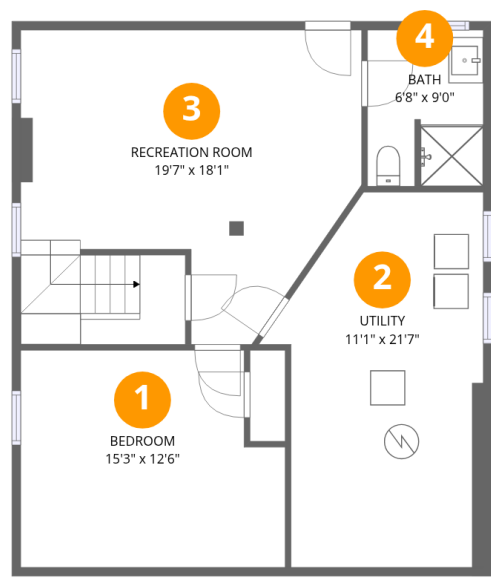
 **3** Bedrooms

 **3** Bathrooms

 **1** Half baths

Home data report

1919 Sils Ave,Louisville,KY,US



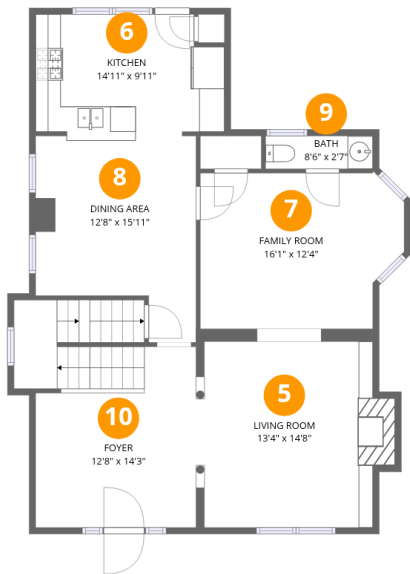
Room dimensions

Floor 1 Below grade Total:0sqft Excluded: 883sqft

#		Dimensions	sqft	Counted as living area
1	Bedroom	15'3" x 12'6"	177 sq. ft	No
2	Utility	11'1" x 21'7"	229 sq. ft	No
3	Recreation Room	19'7" x 18'1"	323 sq. ft	No
4	Bath	6'8" x 9'0"	59 sq. ft	No

Home data report

1919 Sils Ave,Louisville,KY,US



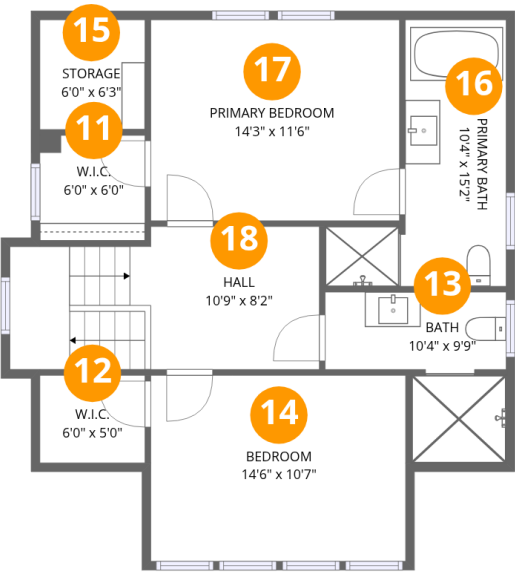
Room dimensions

Floor 2 Total:1066sqft   Excluded: 11sqft

#		Dimensions	sqft	Counted as living area
5	Living Room	13'4" x 14'8"	211 sq. ft	Yes
6	Kitchen	14'11" x 9'11"	139 sq. ft	Yes
7	Family Room	16'1" x 12'4"	184 sq. ft	Yes
8	Dining Area	12'8" x 15'11"	170 sq. ft	Yes
9	Bath	8'6" x 2'7"	22 sq. ft	Yes
10	Foyer	12'8" x 14'3"	222 sq. ft	Yes

Home data report

1919 Sils Ave,Louisville,KY,US

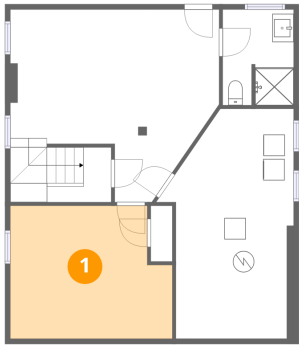


Room dimensions

Floor 3 Total:785sqft Excluded: 44sqft

#		Dimensions	sqft	Counted as living area
11	W.I.C.	6'0" x 6'0"	36 sq. ft	Yes
12	W.I.C.	6'0" x 5'0"	30 sq. ft	Yes
13	Bath	10'4" x 9'9"	74 sq. ft	Yes
14	Bedroom	14'6" x 10'7"	155 sq. ft	Yes
15	Storage	6'0" x 6'3"	23 sq. ft	No
16	Primary Bath	10'4" x 15'2"	103 sq. ft	Yes
17	Primary Bedroom	14'3" x 11'6"	163 sq. ft	Yes
18	Hall	10'9" x 8'2"	135 sq. ft	Yes

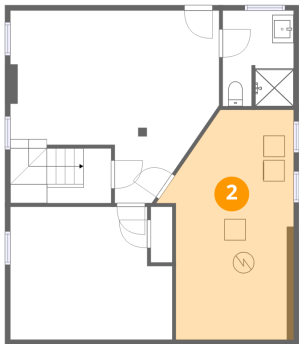
1 Floor 1 - Bedroom



Dimensions: 15'3" x 12'6"  
Area: 177 sq. ft  
Counted as living area: No

Heated: Yes  
Finished: Yes  
Enclosed: Yes  
Contiguous: No  
Permitted: Yes  
Wet space: No  
Addition: No  
Conversion: No

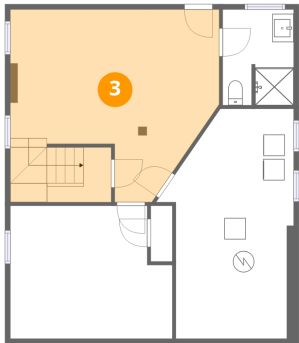
2 Floor 1 - Utility



Dimensions: 11'1" x 21'7"  
Area: 229 sq. ft  
Counted as living area: No

Heated: Yes  
Finished: No  
Enclosed: Yes  
Contiguous: Yes  
Permitted: Yes  
Wet space: No  
Addition: No  
Conversion: No

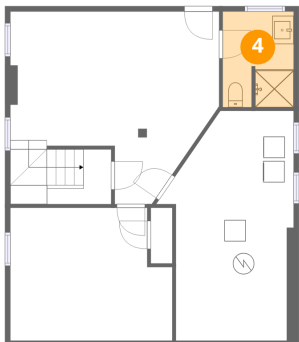
3 Floor 1 - Recreation Room



Dimensions: 19'7" x 18'1"  
Area: 323 sq. ft  
Counted as living area: No

Heated: Yes  
Finished: No  
Enclosed: Yes  
Contiguous: Yes  
Permitted: Yes  
Wet space: No  
Addition: No  
Conversion: No

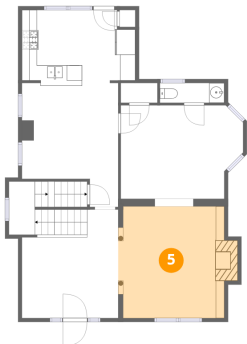
4 Floor 1 - Bath



Dimensions: 6'8" x 9'0"  
Area: 59 sq. ft  
Counted as living area: No

Heated: Yes  
Finished: Yes  
Enclosed: Yes  
Contiguous: No  
Permitted: Yes  
Wet space: Yes  
Addition: No  
Conversion: No

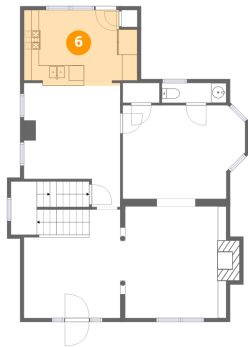
5 Floor 2 - Living Room



Dimensions: 13'4" x 14'8"  
Area: 211 sq. ft  
Counted as living area: Yes

Heated: Yes  
Finished: Yes  
Enclosed: Yes  
Contiguous: Yes  
Permitted: Yes  
Wet space: No  
Addition: No  
Conversion: No

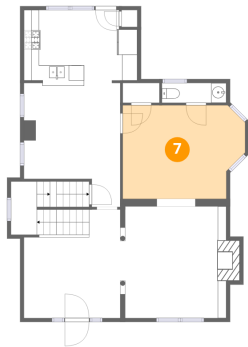
6 Floor 2 - Kitchen



Dimensions: 14'11" x 9'11"  
Area: 139 sq. ft  
Counted as living area: Yes

Heated: Yes  
Finished: Yes  
Enclosed: Yes  
Contiguous: Yes  
Permitted: Yes  
Wet space: No  
Addition: No  
Conversion: No

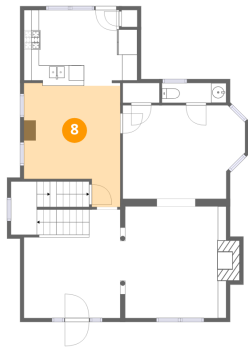
7 Floor 2 - Family Room



Dimensions: 16'1" x 12'4"  
Area: 184 sq. ft  
Counted as living area: Yes

Heated: Yes  
Finished: Yes  
Enclosed: Yes  
Contiguous: Yes  
Permitted: Yes  
Wet space: No  
Addition: No  
Conversion: No

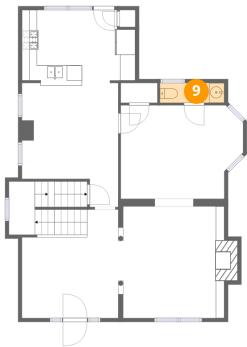
8 Floor 2 - Dining Area



Dimensions: 12'8" x 15'11"  
Area: 170 sq. ft  
Counted as living area: Yes

Heated: Yes  
Finished: Yes  
Enclosed: Yes  
Contiguous: Yes  
Permitted: Yes  
Wet space: No  
Addition: No  
Conversion: No

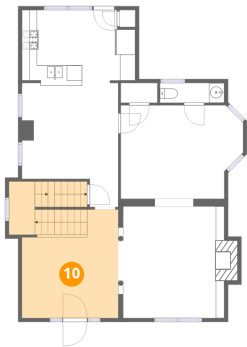
9 Floor 2 - Bath



Dimensions: 8'6" x 2'7"  
Area: 22 sq. ft  
Counted as living area: Yes

Heated: Yes  
Finished: Yes  
Enclosed: Yes  
Contiguous: Yes  
Permitted: Yes  
Wet space: Yes  
Addition: No  
Conversion: No

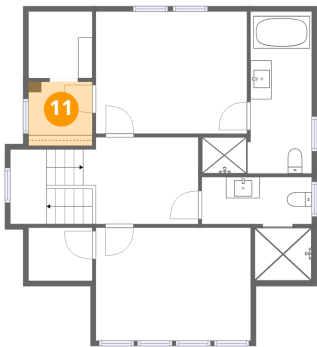
10 Floor 2 - Foyer



Dimensions: 12'8" x 14'3"  
Area: 222 sq. ft  
Counted as living area: Yes

Heated: Yes  
Finished: Yes  
Enclosed: Yes  
Contiguous: Yes  
Permitted: Yes  
Wet space: No  
Addition: No  
Conversion: No

11 Floor 3 - W.I.C.

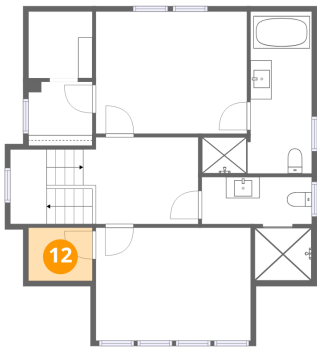


Dimensions: 6'0" x 6'0"  
Area: 36 sq. ft  
Counted as living area: Yes

Heated: Yes  
Finished: Yes  
Enclosed: Yes  
Contiguous: Yes  
Permitted: Yes  
Wet space: No  
Addition: No  
Conversion: No



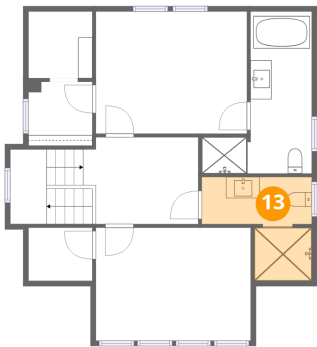
12 Floor 3 - W.I.C.



Dimensions: 6'0" x 5'0"  
Area: 30 sq. ft  
Counted as living area: Yes

Heated: Yes  
Finished: Yes  
Enclosed: Yes  
Contiguous: Yes  
Permitted: Yes  
Wet space: No  
Addition: No  
Conversion: No

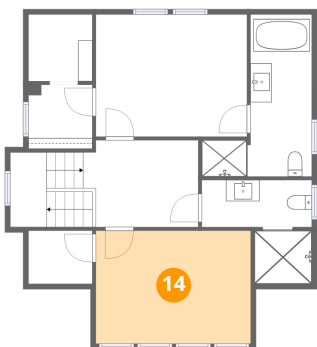
13 Floor 3 - Bath



Dimensions: 10'4" x 9'9"  
Area: 74 sq. ft  
Counted as living area: Yes

Heated: Yes  
Finished: Yes  
Enclosed: Yes  
Contiguous: Yes  
Permitted: Yes  
Wet space: Yes  
Addition: No  
Conversion: No

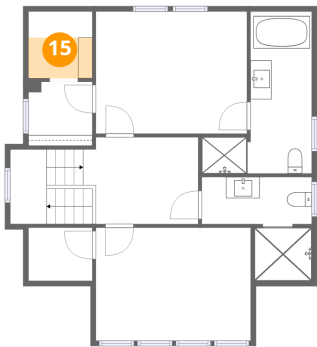
14 Floor 3 - Bedroom



Dimensions: 14'6" x 10'7"  
Area: 155 sq. ft  
Counted as living area: Yes

Heated: Yes  
Finished: Yes  
Enclosed: Yes  
Contiguous: Yes  
Permitted: Yes  
Wet space: No  
Addition: No  
Conversion: No

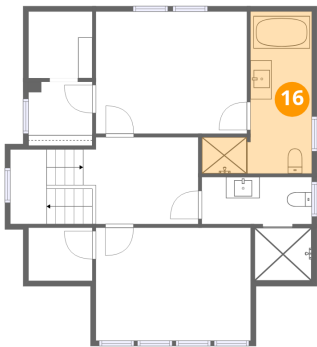
15 Floor 3 - Storage



Dimensions: 6'0" x 6'3"  
Area: 23 sq. ft  
Counted as living area: No

Heated: No  
Finished: Yes  
Enclosed: No  
Contiguous: Yes  
Permitted: Yes  
Wet space: No  
Addition: No  
Conversion: No

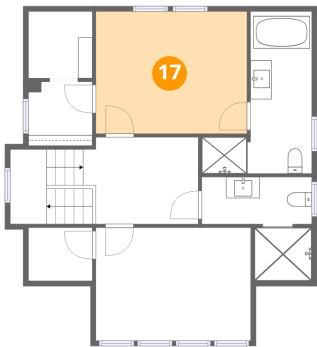
16 Floor 3 - Primary Bath



Dimensions: 10'4" x 15'2"  
Area: 103 sq. ft  
Counted as living area: Yes

Heated: Yes  
Finished: Yes  
Enclosed: Yes  
Contiguous: Yes  
Permitted: Yes  
Wet space: Yes  
Addition: No  
Conversion: No

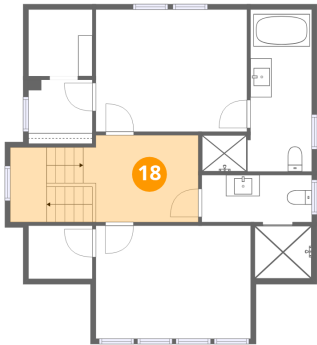
17 Floor 3 - Primary Bedroom



Dimensions: 14'3" x 11'6"  
Area: 163 sq. ft  
Counted as living area: Yes

Heated: Yes  
Finished: Yes  
Enclosed: Yes  
Contiguous: Yes  
Permitted: Yes  
Wet space: No  
Addition: No  
Conversion: No

18 Floor 3 - Hall



Dimensions: 10'9" x 8'2"  
Area: 135 sq. ft  
Counted as living area: Yes

Heated: Yes  
Finished: Yes  
Enclosed: Yes  
Contiguous: Yes  
Permitted: Yes  
Wet space: No  
Addition: No  
Conversion: No