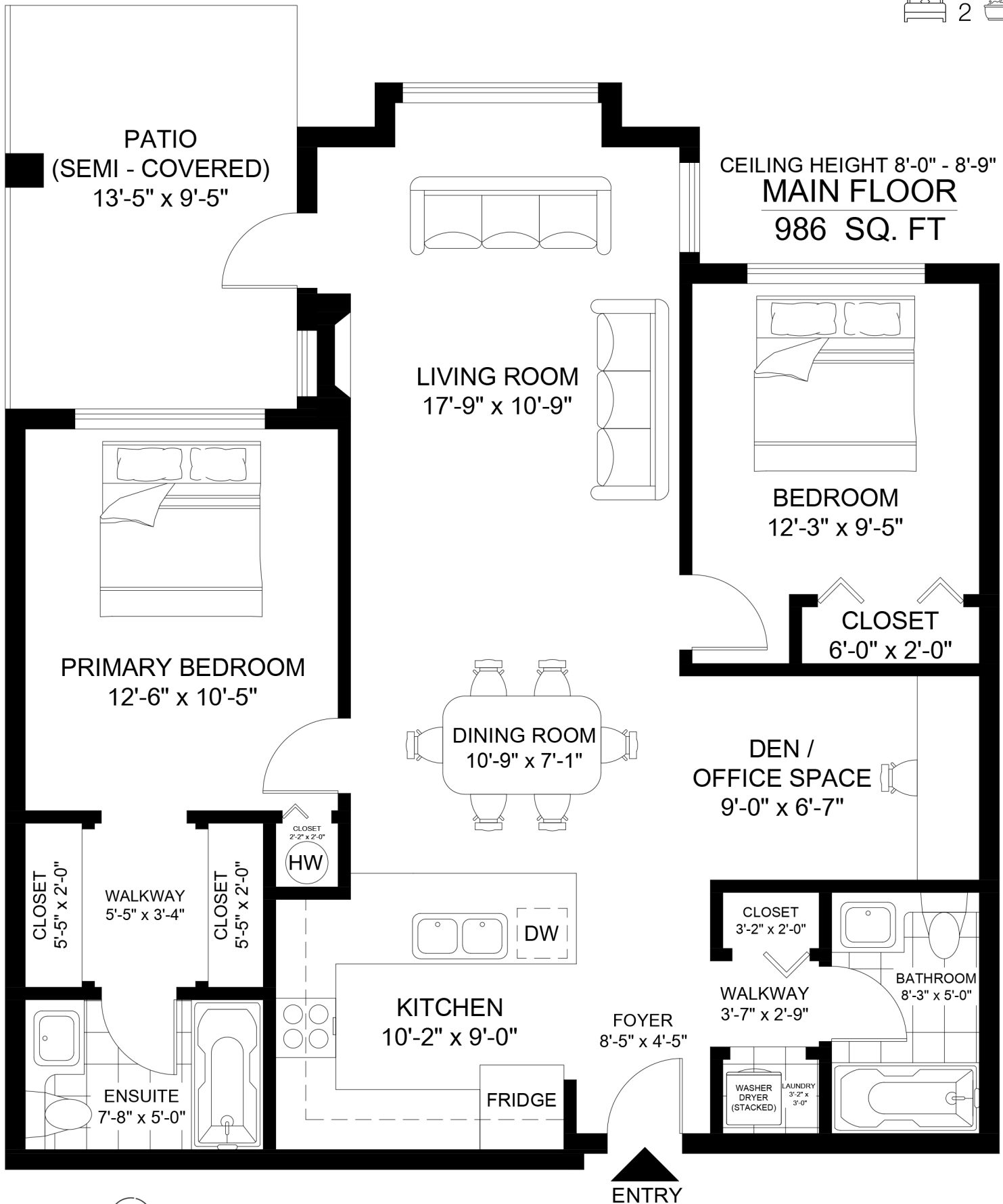


Unit 120 - 15988 26 Avenue
Surrey, BC, V3S 5K3

Year Built: 2008
Strata Plan: 964 Sq Ft

UNIT 120 - 15988 26 AVENUE, SURREY, V3S 5K3

FLOOR	AREA (SQ. FT.)			
	FINISHED	CARPORT	GARAGE	PATIO
MAIN	986	-	-	129
TOTAL	986	-	-	129



CEILING HEIGHT 8'-0" - 8'-9"
MAIN FLOOR
986 SQ. FT

ENTRY



Developed On: March 12, 2024 - Valid Until: September 12, 2024



This floor plan is intended for marketing purposes only and should not be used for architectural or construction. All dimensions are based on interior measurements exclusive of exterior walls and open to below areas, while the information contained within this floor plan is deemed to be correct. It is not guaranteed. All room sizes are approximate and room sizes are approved accurately. BC Assessment or strata plan may have been used for total square footage. This floor plan is covered under ISO 9001:2015 and cannot be reproduced, published or distributed in whole or part or incorporated with any other work. All room dimensions and floor areas must be considered approximate and are subject to independent verification. All rights reserved for Realty Studios & UICFO Inc. Six inch walls were used for all floors.