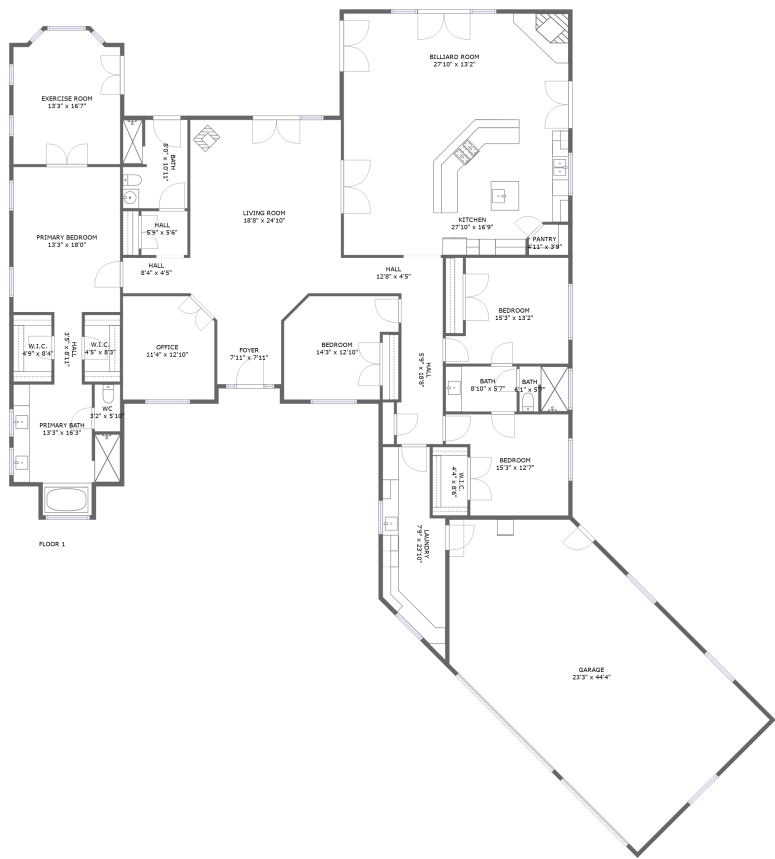



Home report

1185 Beaver Creek Lane, Paso Robles, San Luis Obispo County, California, United States, 93446



Property summary

 **1** Garages

 **4** Bedrooms

 **3** Bathrooms

 **0** Half baths

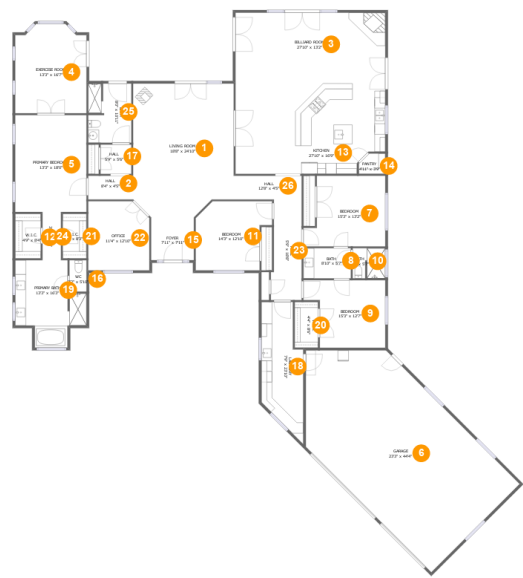
 **1** Floors

 **3,649** Gross living area sqft

 **4,619** Total sqft

Home report

1185 Beaver Creek Lane, Paso Robles, San Luis Obispo County,
California, United States, 93446



Room dimensions

Floor 1 Total sqft: 4619 Living area: 3649

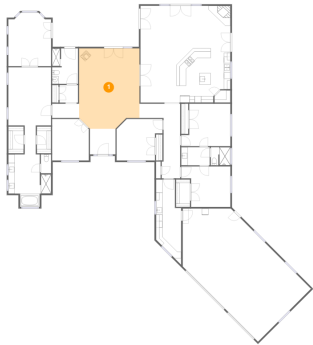
#		Dimensions	sqft	Counted as living area
1	Living Room	18'8" x 24'10"	440 sq. ft	Yes
2	Hall	8'4" x 4'5"	37 sq. ft	Yes
3	Billiard Room	27'10" x 13'2"	367 sq. ft	Yes
4	Exercise Room	13'3" x 16'7"	208 sq. ft	Yes
5	Primary Bedroom	13'3" x 18'0"	238 sq. ft	Yes
6	Garage	23'3" x 44'4"	924 sq. ft	No
7	Bedroom	15'3" x 13'2"	176 sq. ft	Yes
8	Bath	8'10" x 5'7"	49 sq. ft	Yes
9	Bedroom	15'3" x 12'7"	164 sq. ft	Yes
10	Bath	6'1" x 5'7"	33 sq. ft	Yes
11	Bedroom	14'3" x 12'10"	158 sq. ft	Yes

Home report

**1185 Beaver Creek Lane, Paso Robles, San Luis Obispo County,
California, United States, 93446**

#		Dimensions	sqft	Counted as living area
12	W.I.C.	4'9" x 8'4"	39 sq. ft	Yes
13	Kitchen	27'10" x 16'9"	448 sq. ft	Yes
14	Pantry	4'11" x 3'9"	17 sq. ft	Yes
15	Foyer	7'11" x 7'11"	63 sq. ft	Yes
16	WC	3'2" x 5'10"	18 sq. ft	Yes
17	Hall	5'9" x 5'6"	31 sq. ft	Yes
18	Laundry	7'9" x 23'10"	158 sq. ft	Yes
19	Primary Bath	13'3" x 16'3"	163 sq. ft	Yes
20	W.I.C.	4'4" x 8'6"	37 sq. ft	Yes
21	W.I.C.	4'5" x 8'3"	37 sq. ft	Yes
22	Office	11'4" x 12'10"	141 sq. ft	Yes
23	Hall	5'9" x 18'8"	99 sq. ft	Yes
24	Hall	3'5" x 8'11"	31 sq. ft	Yes
25	Bath	8'0" x 10'11"	86 sq. ft	Yes
26	Hall	12'8" x 4'5"	56 sq. ft	Yes

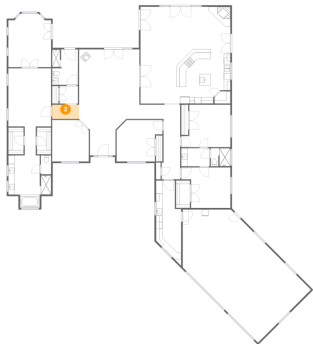
1 Floor 1 - Living Room



Dimensions: 18'8" x 24'10"
Area: 440 sq. ft
Counted as living area: Yes

Heated: Yes
Finished: Yes
Enclosed: Yes
Contiguous: Yes
Permitted: Yes
Wet space: No
Addition: No
Conversion: No

2 Floor 1 - Hall



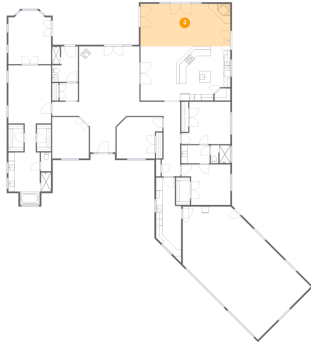
Dimensions: 8'4" x 4'5"
Area: 37 sq. ft
Counted as living area: Yes

Heated: Yes
Finished: Yes
Enclosed: Yes
Contiguous: Yes
Permitted: Yes
Wet space: No
Addition: No
Conversion: No

Home report

1185 Beaver Creek Lane, Paso Robles, San Luis Obispo County,
California, United States, 93446

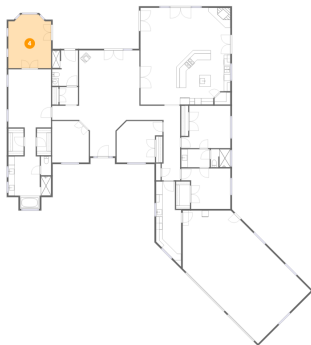
3 Floor 1 - Billiard Room



Dimensions: 27'10" x 13'2"
Area: 367 sq. ft
Counted as living area: Yes

Heated: Yes
Finished: Yes
Enclosed: Yes
Contiguous: Yes
Permitted: Yes
Wet space: No
Addition: No
Conversion: No

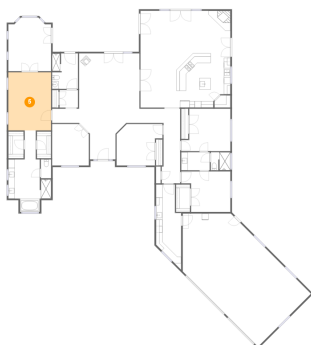
4 Floor 1 - Exercise Room



Dimensions: 13'3" x 16'7"
Area: 208 sq. ft
Counted as living area: Yes

Heated: Yes
Finished: Yes
Enclosed: Yes
Contiguous: Yes
Permitted: Yes
Wet space: No
Addition: No
Conversion: No

5 Floor 1 - Primary Bedroom



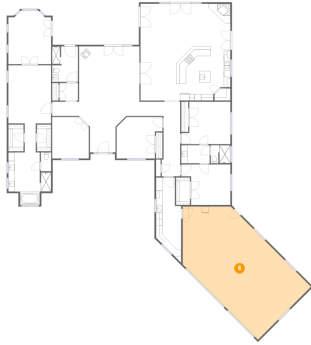
Dimensions: 13'3" x 18'0"
Area: 238 sq. ft
Counted as living area: Yes

Heated: Yes
Finished: Yes
Enclosed: Yes
Contiguous: Yes
Permitted: Yes
Wet space: No
Addition: No
Conversion: No

Home report

1185 Beaver Creek Lane, Paso Robles, San Luis Obispo County,
California, United States, 93446

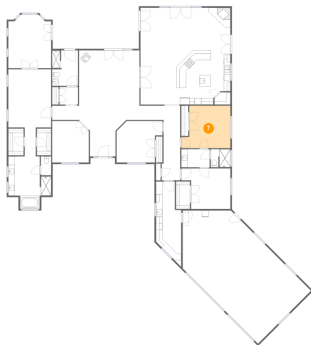
6 Floor 1 - Garage



Dimensions: 23'3" x 44'4"
Area: 924 sq. ft
Counted as living area: No

Heated: No
Finished: No
Enclosed: Yes
Contiguous: Yes
Permitted: Yes
Wet space: No
Addition: No
Conversion: No

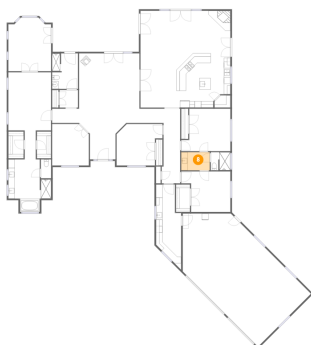
7 Floor 1 - Bedroom



Dimensions: 15'3" x 13'2"
Area: 176 sq. ft
Counted as living area: Yes

Heated: Yes
Finished: Yes
Enclosed: Yes
Contiguous: Yes
Permitted: Yes
Wet space: No
Addition: No
Conversion: No

8 Floor 1 - Bath

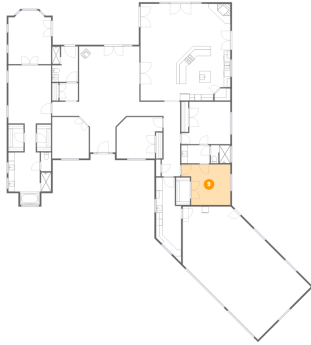


Dimensions: 8'10" x 5'7"
Area: 49 sq. ft
Counted as living area: Yes

Heated: Yes
Finished: Yes
Enclosed: Yes
Contiguous: Yes
Permitted: Yes
Wet space: Yes
Addition: No
Conversion: No

1185 Beaver Creek Lane, Paso Robles, San Luis Obispo County,
California, United States, 93446

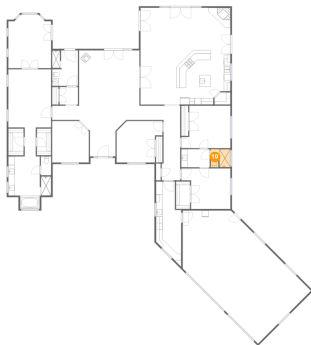
9 Floor 1 - Bedroom



Dimensions: 15'3" x 12'7"
Area: 164 sq. ft
Counted as living area: Yes

Heated: Yes
Finished: Yes
Enclosed: Yes
Contiguous: Yes
Permitted: Yes
Wet space: No
Addition: No
Conversion: No

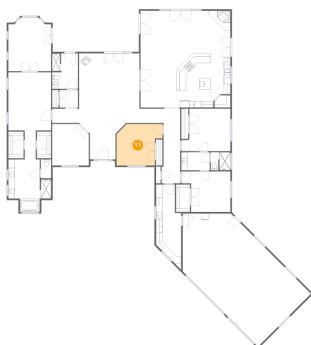
10 Floor 1 - Bath



Dimensions: 6'1" x 5'7"
Area: 33 sq. ft
Counted as living area: Yes

Heated: Yes
Finished: Yes
Enclosed: Yes
Contiguous: Yes
Permitted: Yes
Wet space: Yes
Addition: No
Conversion: No

11 Floor 1 - Bedroom



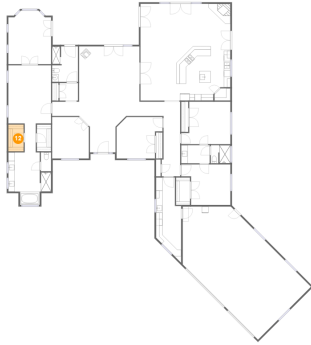
Dimensions: 14'3" x 12'10"
Area: 158 sq. ft
Counted as living area: Yes

Heated: Yes
Finished: Yes
Enclosed: Yes
Contiguous: Yes
Permitted: Yes
Wet space: No
Addition: No
Conversion: No

Home report

1185 Beaver Creek Lane, Paso Robles, San Luis Obispo County,
California, United States, 93446

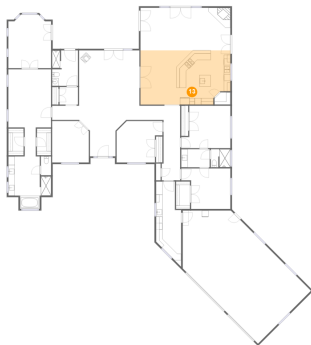
12 Floor 1 - W.I.C.



Dimensions: 4'9" x 8'4"
Area: 39 sq. ft
Counted as living area: Yes

Heated: Yes
Finished: Yes
Enclosed: Yes
Contiguous: Yes
Permitted: Yes
Wet space: No
Addition: No
Conversion: No

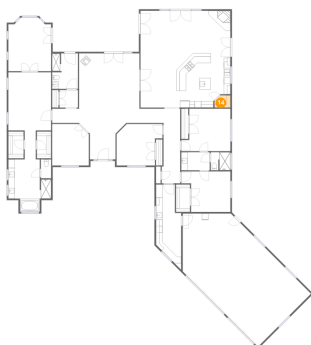
13 Floor 1 - Kitchen



Dimensions: 27'10" x 16'9"
Area: 448 sq. ft
Counted as living area: Yes

Heated: Yes
Finished: Yes
Enclosed: Yes
Contiguous: Yes
Permitted: Yes
Wet space: No
Addition: No
Conversion: No

14 Floor 1 - Pantry

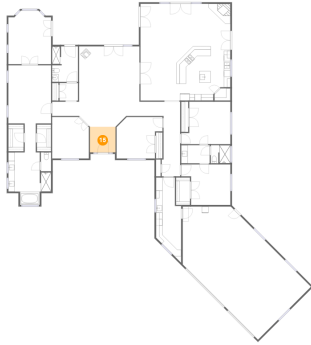


Dimensions: 4'11" x 3'9"
Area: 17 sq. ft
Counted as living area: Yes

Heated: Yes
Finished: Yes
Enclosed: Yes
Contiguous: Yes
Permitted: Yes
Wet space: No
Addition: No
Conversion: No

1185 Beaver Creek Lane, Paso Robles, San Luis Obispo County,
California, United States, 93446

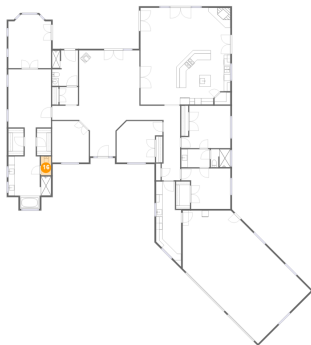
15 Floor 1 - Foyer



Dimensions: 7'11" x 7'11"
Area: 63 sq. ft
Counted as living area: Yes

Heated: Yes
Finished: Yes
Enclosed: Yes
Contiguous: Yes
Permitted: Yes
Wet space: No
Addition: No
Conversion: No

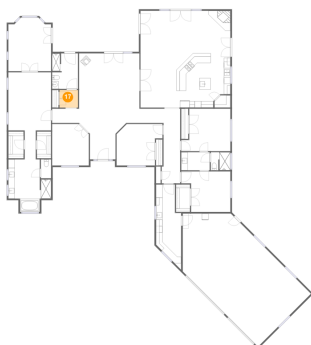
16 Floor 1 - WC



Dimensions: 3'2" x 5'10"
Area: 18 sq. ft
Counted as living area: Yes

Heated: Yes
Finished: Yes
Enclosed: Yes
Contiguous: Yes
Permitted: Yes
Wet space: Yes
Addition: No
Conversion: No

17 Floor 1 - Hall



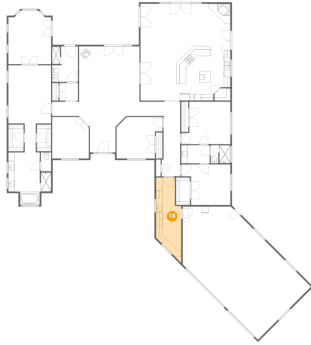
Dimensions: 5'9" x 5'6"
Area: 31 sq. ft
Counted as living area: Yes

Heated: Yes
Finished: Yes
Enclosed: Yes
Contiguous: Yes
Permitted: Yes
Wet space: No
Addition: No
Conversion: No

Home report

1185 Beaver Creek Lane, Paso Robles, San Luis Obispo County,
California, United States, 93446

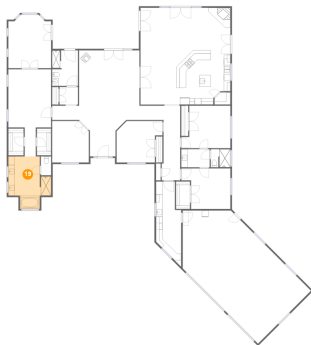
18 Floor 1 - Laundry



Dimensions: 7'9" x 23'10"
Area: 158 sq. ft
Counted as living area: Yes

Heated: Yes
Finished: Yes
Enclosed: Yes
Contiguous: Yes
Permitted: Yes
Wet space: No
Addition: No
Conversion: No

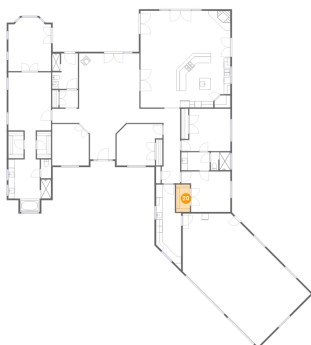
19 Floor 1 - Primary Bath



Dimensions: 13'3" x 16'3"
Area: 163 sq. ft
Counted as living area: Yes

Heated: Yes
Finished: Yes
Enclosed: Yes
Contiguous: Yes
Permitted: Yes
Wet space: Yes
Addition: No
Conversion: No

20 Floor 1 - W.I.C.



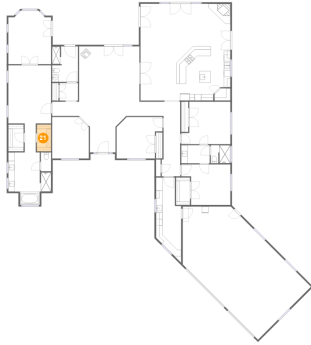
Dimensions: 4'4" x 8'6"
Area: 37 sq. ft
Counted as living area: Yes

Heated: Yes
Finished: Yes
Enclosed: Yes
Contiguous: Yes
Permitted: Yes
Wet space: No
Addition: No
Conversion: No

Home report

1185 Beaver Creek Lane, Paso Robles, San Luis Obispo County,
California, United States, 93446

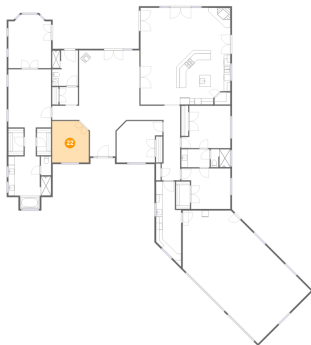
21 Floor 1 - W.I.C.



Dimensions: 4'5" x 8'3"
Area: 37 sq. ft
Counted as living area: Yes

Heated: Yes
Finished: Yes
Enclosed: Yes
Contiguous: Yes
Permitted: Yes
Wet space: No
Addition: No
Conversion: No

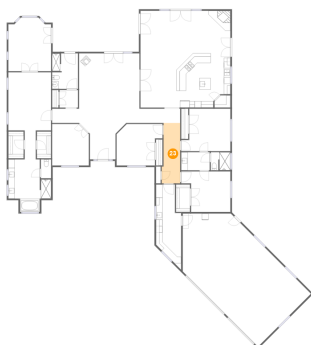
22 Floor 1 - Office



Dimensions: 11'4" x 12'10"
Area: 141 sq. ft
Counted as living area: Yes

Heated: Yes
Finished: Yes
Enclosed: Yes
Contiguous: Yes
Permitted: Yes
Wet space: No
Addition: No
Conversion: No

23 Floor 1 - Hall

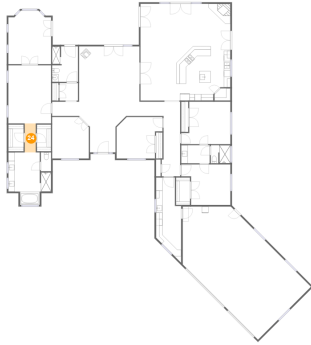


Dimensions: 5'9" x 18'8"
Area: 99 sq. ft
Counted as living area: Yes

Heated: Yes
Finished: Yes
Enclosed: Yes
Contiguous: Yes
Permitted: Yes
Wet space: No
Addition: No
Conversion: No

1185 Beaver Creek Lane, Paso Robles, San Luis Obispo County,
California, United States, 93446

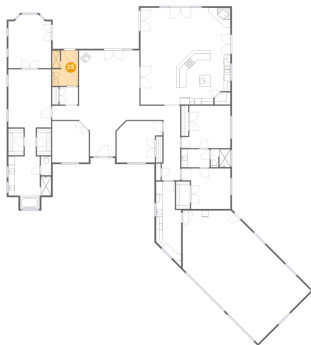
24 Floor 1 - Hall



Dimensions: 3'5" x 8'11"
Area: 31 sq. ft
Counted as living area: Yes

Heated: Yes
Finished: Yes
Enclosed: Yes
Contiguous: Yes
Permitted: Yes
Wet space: No
Addition: No
Conversion: No

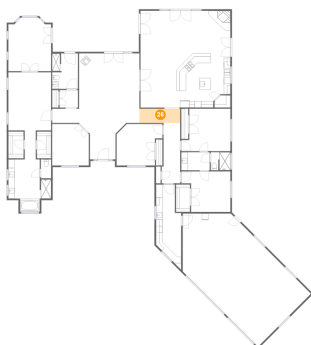
25 Floor 1 - Bath



Dimensions: 8'0" x 10'11"
Area: 86 sq. ft
Counted as living area: Yes

Heated: Yes
Finished: Yes
Enclosed: Yes
Contiguous: Yes
Permitted: Yes
Wet space: Yes
Addition: No
Conversion: No

26 Floor 1 - Hall



Dimensions: 12'8" x 4'5"
Area: 56 sq. ft
Counted as living area: Yes

Heated: Yes
Finished: Yes
Enclosed: Yes
Contiguous: Yes
Permitted: Yes
Wet space: No
Addition: No
Conversion: No