


Home report


738 Murray Avenue Southeast, Morningside, Roanoke, Roanoke city, Virginia, United States, 24013




Property summary

0


Garages

4

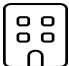
Bedrooms

2


Bathrooms

0


Half baths

4

Floors

1,728

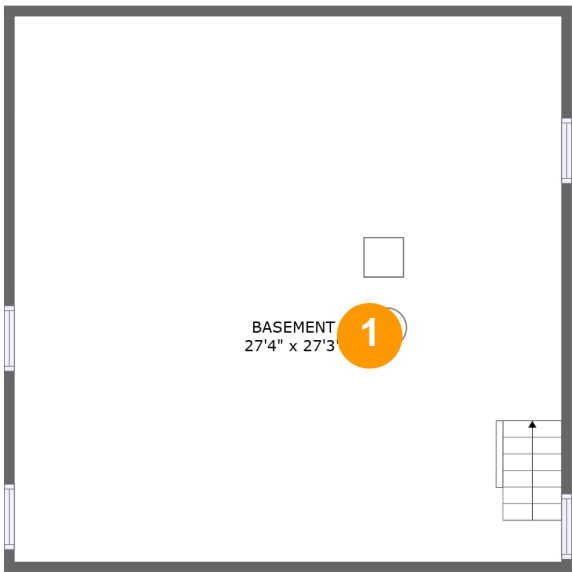
Gross living area sqft

3,924

Total sqft

Home report

738 Murray Avenue Southeast, Morningside, Roanoke, Roanoke city, Virginia, United States, 24013



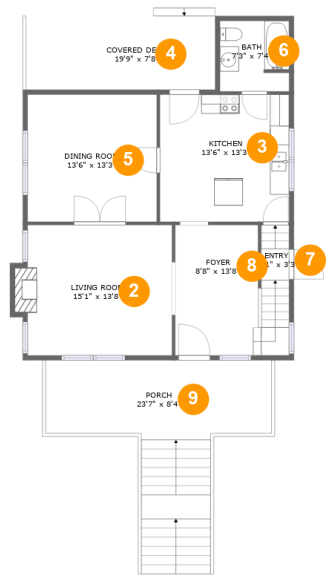
Room dimensions

Floor 1 Total sqft: 801 Living area: 0

#		Dimensions	sqft	Counted as living area
1	Basement	27'4" x 27'3"	745 sq. ft	No

Home report

738 Murray Avenue Southeast, Morningside, Roanoke, Roanoke city, Virginia, United States, 24013



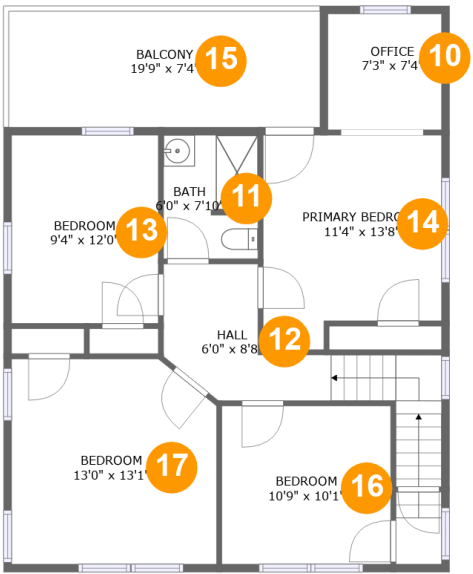
Room dimensions

Floor 2 Total sqft: 1311 Living area: 864

#		Dimensions	sqft	Counted as living area
2	Living Room	15'1" x 13'8"	212 sq. ft	Yes
3	Kitchen	13'6" x 13'3"	179 sq. ft	Yes
4	Covered Deck	19'9" x 7'8"	152 sq. ft	No
5	Dining Room	13'6" x 13'3"	179 sq. ft	Yes
6	Bath	7'3" x 7'4"	52 sq. ft	Yes
7	Entry	2'11" x 3'3"	40 sq. ft	Yes
8	Foyer	8'8" x 13'8"	120 sq. ft	Yes
9	Porch	23'7" x 8'4"	287 sq. ft	No

Home report

738 Murray Avenue Southeast, Morningside, Roanoke, Roanoke city, Virginia, United States, 24013



Room dimensions

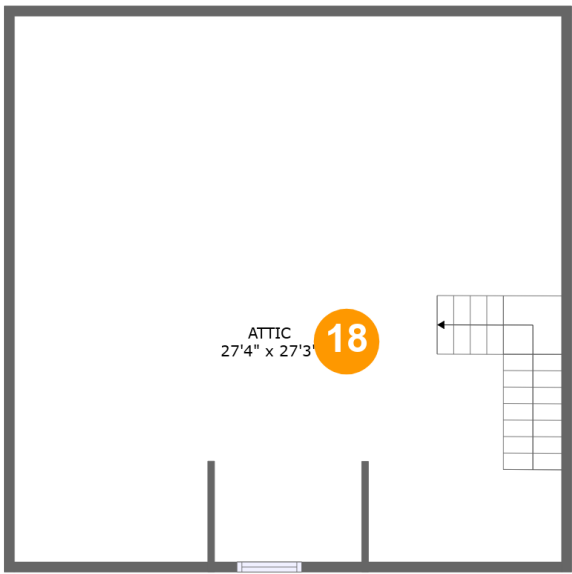
Floor 3

Total sqft: 1010 Living area: 864

#		Dimensions	sqft	Counted as living area
10	Office	7'3" x 7'4"	53 sq. ft	Yes
11	Bath	6'0" x 7'10"	46 sq. ft	Yes
12	Hall	6'0" x 8'8"	97 sq. ft	Yes
13	Bedroom	9'4" x 12'0"	112 sq. ft	Yes
14	Primary Bedroom	11'4" x 13'8"	141 sq. ft	Yes
15	Balcony	19'9" x 7'4"	146 sq. ft	No
16	Bedroom	10'9" x 10'1"	108 sq. ft	Yes
17	Bedroom	13'0" x 13'1"	164 sq. ft	Yes

Home report

738 Murray Avenue Southeast, Morningside, Roanoke, Roanoke city, Virginia, United States, 24013

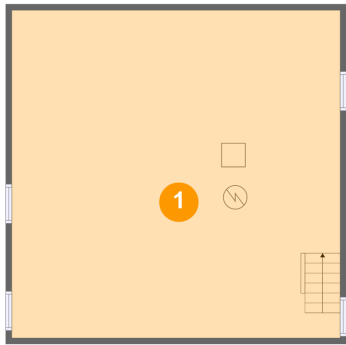


Room dimensions

Floor 4 Total sqft: 802 Living area: 0

#		Dimensions	sqft	Counted as living area
18	Attic	27'4" x 27'3"	400 sq. ft	No

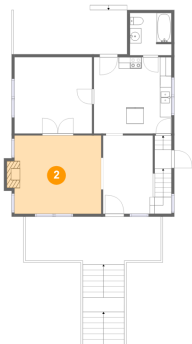
1 Floor 1 - Basement



Dimensions: 27'4" x 27'3"
Area: 745 sq. ft
Counted as living area: No

Heated: Yes
Finished: No
Enclosed: Yes
Contiguous: Yes
Permitted: Yes
Wet space: No
Addition: No
Conversion: No

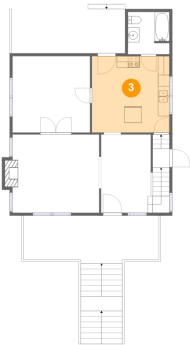
2 Floor 2 - Living Room



Dimensions: 15'1" x 13'8"
Area: 212 sq. ft
Counted as living area: Yes

Heated: Yes
Finished: Yes
Enclosed: Yes
Contiguous: Yes
Permitted: Yes
Wet space: No
Addition: No
Conversion: No

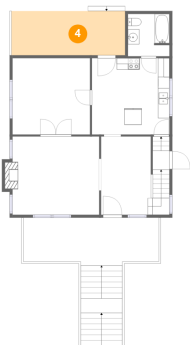
3 Floor 2 - Kitchen



Dimensions: 13'6" x 13'3"
Area: 179 sq. ft
Counted as living area: Yes

Heated: Yes
Finished: Yes
Enclosed: Yes
Contiguous: Yes
Permitted: Yes
Wet space: No
Addition: No
Conversion: No

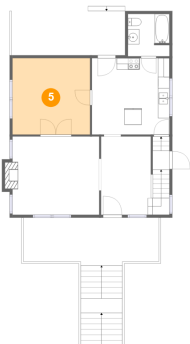
4 Floor 2 - Covered Deck



Dimensions: 19'9" x 7'8"
Area: 152 sq. ft
Counted as living area: No

Heated: No
Finished: Yes
Enclosed: No
Contiguous: Yes
Permitted: Yes
Wet space: No
Addition: No
Conversion: No

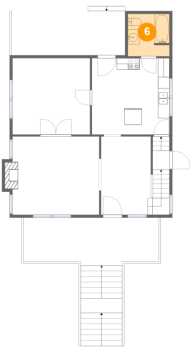
5 Floor 2 - Dining Room



Dimensions: 13'6" x 13'3"
Area: 179 sq. ft
Counted as living area: Yes

Heated: Yes
Finished: Yes
Enclosed: Yes
Contiguous: Yes
Permitted: Yes
Wet space: No
Addition: No
Conversion: No

6 Floor 2 - Bath



Dimensions: 7'3" x 7'4"
Area: 52 sq. ft
Counted as living area: Yes

Heated: Yes
Finished: Yes
Enclosed: Yes
Contiguous: Yes
Permitted: Yes
Wet space: Yes
Addition: No
Conversion: No

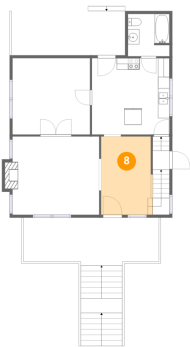
7 Floor 2 - Entry



Dimensions: 2'11" x 3'3"
Area: 40 sq. ft
Counted as living area: Yes

Heated: Yes
Finished: Yes
Enclosed: Yes
Contiguous: Yes
Permitted: Yes
Wet space: No
Addition: No
Conversion: No

8 Floor 2 - Foyer

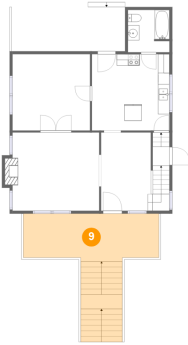


Dimensions: 8'8" x 13'8"
Area: 120 sq. ft
Counted as living area: Yes

Heated: Yes
Finished: Yes
Enclosed: Yes
Contiguous: Yes
Permitted: Yes
Wet space: No
Addition: No
Conversion: No

738 Murray Avenue Southeast, Morningside, Roanoke, Roanoke city, Virginia, United States, 24013

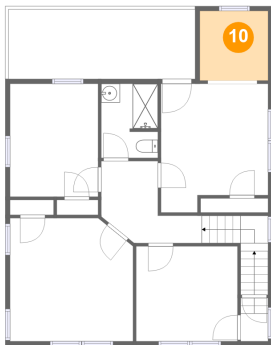
9 Floor 2 - Porch



Dimensions: 23'7" x 8'4"
Area: 287 sq. ft
Counted as living area: No

Heated: No
Finished: Yes
Enclosed: No
Contiguous: Yes
Permitted: Yes
Wet space: No
Addition: No
Conversion: No

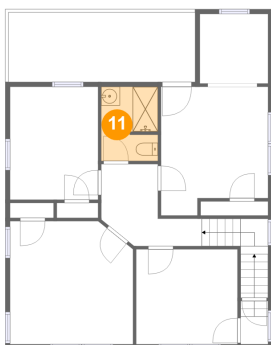
10 Floor 3 - Office



Dimensions: 7'3" x 7'4"
Area: 53 sq. ft
Counted as living area: Yes

Heated: Yes
Finished: Yes
Enclosed: Yes
Contiguous: Yes
Permitted: Yes
Wet space: No
Addition: No
Conversion: No

11 Floor 3 - Bath

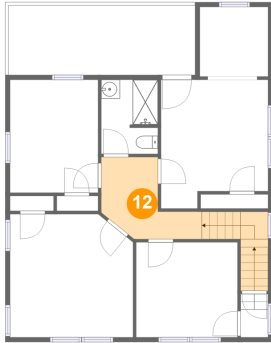


Dimensions: 6'0" x 7'10"
Area: 46 sq. ft
Counted as living area: Yes

Heated: Yes
Finished: Yes
Enclosed: Yes
Contiguous: Yes
Permitted: Yes
Wet space: Yes
Addition: No
Conversion: No

738 Murray Avenue Southeast, Morningside, Roanoke, Roanoke city, Virginia, United States, 24013

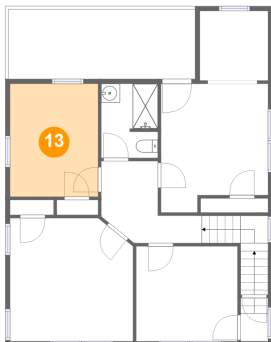
12 Floor 3 - Hall



Dimensions: 6'0" x 8'8"
Area: 97 sq. ft
Counted as living area: Yes

Heated: Yes
Finished: Yes
Enclosed: Yes
Contiguous: Yes
Permitted: Yes
Wet space: No
Addition: No
Conversion: No

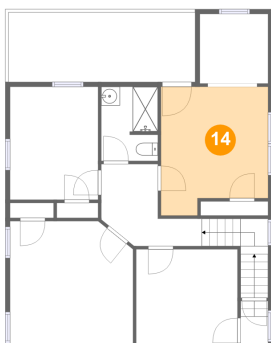
13 Floor 3 - Bedroom



Dimensions: 9'4" x 12'0"
Area: 112 sq. ft
Counted as living area: Yes

Heated: Yes
Finished: Yes
Enclosed: Yes
Contiguous: Yes
Permitted: Yes
Wet space: No
Addition: No
Conversion: No

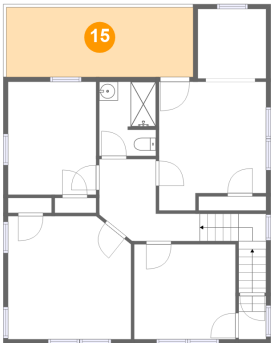
14 Floor 3 - Primary Bedroom



Dimensions: 11'4" x 13'8"
Area: 141 sq. ft
Counted as living area: Yes

Heated: Yes
Finished: Yes
Enclosed: Yes
Contiguous: Yes
Permitted: Yes
Wet space: No
Addition: No
Conversion: No

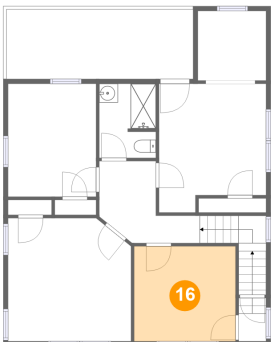
15 Floor 3 - Balcony



Dimensions: 19'9" x 7'4"
Area: 146 sq. ft
Counted as living area: No

Heated: No
Finished: Yes
Enclosed: No
Contiguous: Yes
Permitted: Yes
Wet space: No
Addition: No
Conversion: No

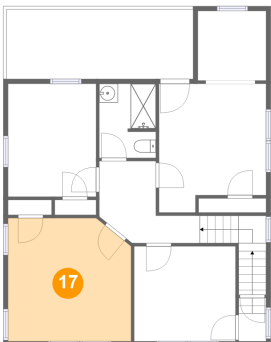
16 Floor 3 - Bedroom



Dimensions: 10'9" x 10'1"
Area: 108 sq. ft
Counted as living area: Yes

Heated: Yes
Finished: Yes
Enclosed: Yes
Contiguous: Yes
Permitted: Yes
Wet space: No
Addition: No
Conversion: No

17 Floor 3 - Bedroom



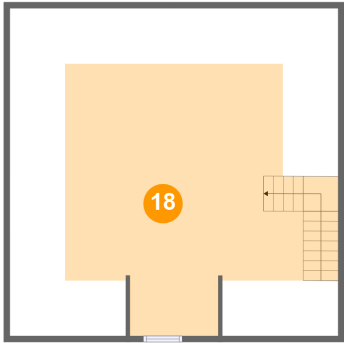
Dimensions: 13'0" x 13'1"
Area: 164 sq. ft
Counted as living area: Yes

Heated: Yes
Finished: Yes
Enclosed: Yes
Contiguous: Yes
Permitted: Yes
Wet space: No
Addition: No
Conversion: No

Home report

738 Murray Avenue Southeast, Morningside, Roanoke, Roanoke city, Virginia, United States, 24013

18 Floor 4 - Attic



Dimensions: 27'4" x 27'3"
Area: 400 sq. ft
Counted as living area: No

Heated: No
Finished: No
Enclosed: Yes
Contiguous: Yes
Permitted: Yes
Wet space: No
Addition: No
Conversion: No