

PROJECT REPORT PRO EDITION

PROJECT NAME

49 seaside Circle

DATE

11 March 2025

SUBMITTED BY

Mina Kordi

JOB

PLN-1238863

LOCATION

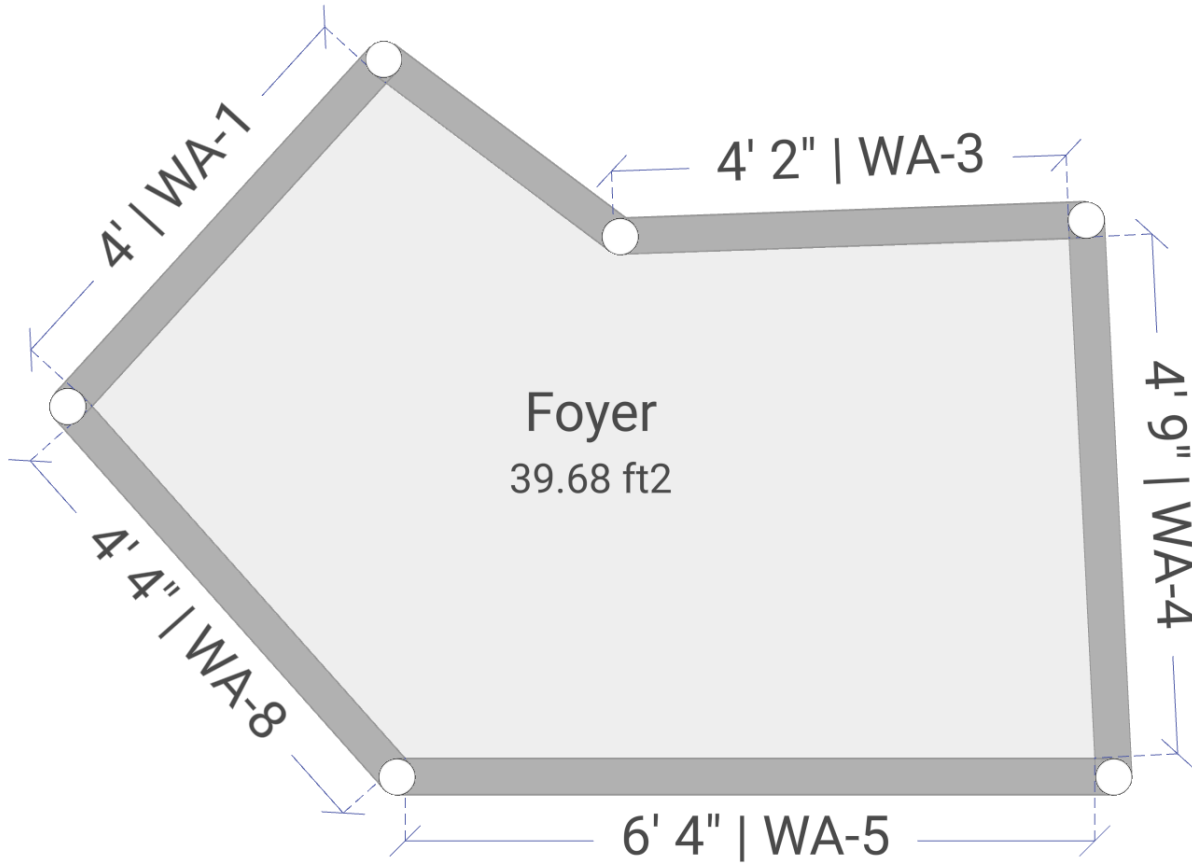
49 Seaside Cir
Brampton
L6R 2G7
CA

Details

PROJECT	49 seaside Circle
JOB #	PLN-1238863
DATE	March 11, 2025 @ 4:07:22 PM (GMT-06:00) America/Chicago
ADDRESS	49 Seaside Cir, Brampton, L6R 2G7, CA
DESCRIPTION NOTES	
INITIATOR NAME	
INITIATOR EMAIL	
REPORTER NAME	
REPORTER EMAIL	
PHOTO COUNT	0
PROJECT SHARE LINK	https://link.plnar.ai/689pGEMXwc

Totals

# OF LEVELS	3
# OF ROOMS	18
# OF WALLS	106
# OF DOORS	0
# OF WINDOWS	0
# OF OPENINGS	0
# OF STRUCTURES OBJECTS	0
FLOOR	2355.81 SF 261.76 SY
FLOOR PERIMETER	813' 2 5/8"
WALLS	3749.37 SF 416.60 SY
CEILING	2539.19 SF 282.13 SY
CEILING PERIMETER	840' 2 9/16"
WALLS & CEILING	6105.18 SF 678.35 SY
VOLUME	9981.36 CF 369.68 CY
# OF EXTERIOR AREAS	0

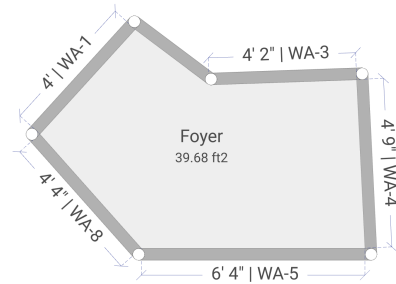


R1 - Foyer | Interior

2025.03.11 @ 4:00:35 PM (GMT-06:00) America/Chicago

Summary

LEVEL	Ground / 1st Floor
FLOOR	39.68 SF 4.41 SY
FLOOR PERIMETER	26' 3 1/4"
FLOOR PERIMETER - SUBTRACTIONS	26' 3 1/4"
WALLS	205.16 SF 22.80 SY
WALLS & CEILING	244.84 SF 27.20 SY
VOLUME	309.92 CF 11.48 CY
NOTES	



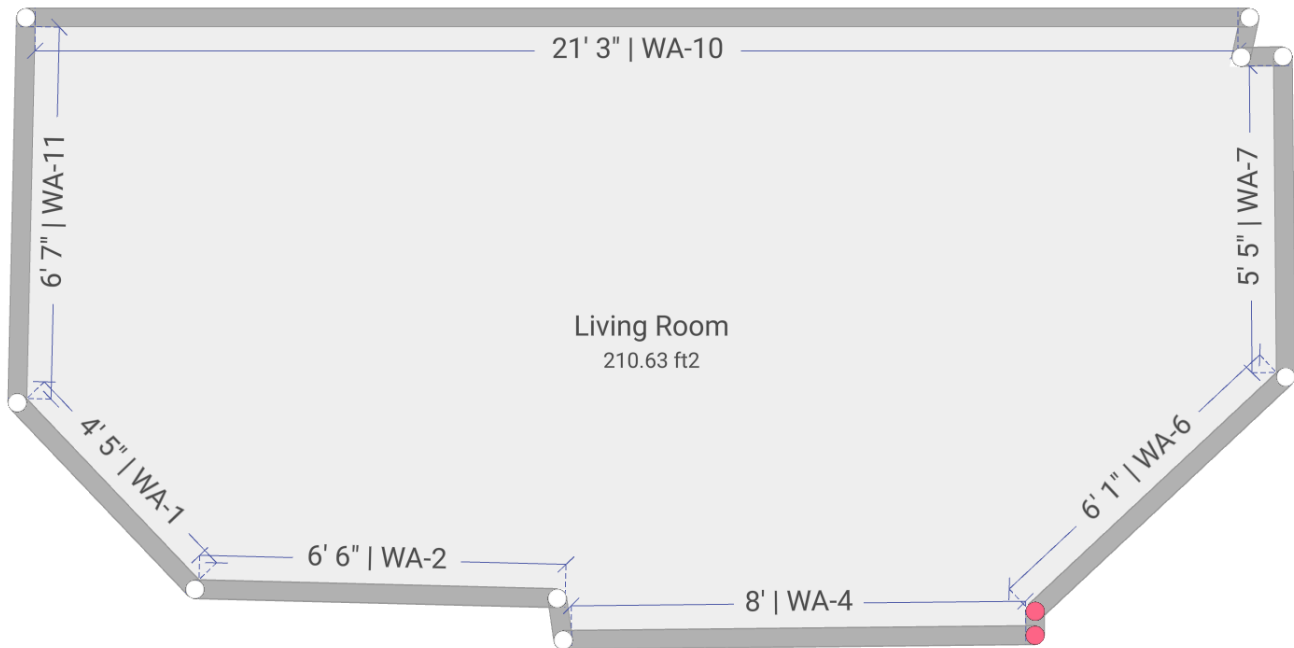
DESCRIPTION NOTES	No description / notes provided.
---------------------	----------------------------------

Ceiling Specs | Type: Undefined

CEIL. PERIMETER	26' 3 1/4"	CEIL. PERIMETER - SUBTRACTIONS	26' 3 1/4"
CEIL. AREA	39.68 SF 4.41 SY	CEIL. AREA - SUBTRACTIONS	39.68 SF 4.41 SY

Walls

TAG	HEIGHT	WIDTH	AREA	AREA - SUBTRACTIONS
WA-5	7' 9 3/4"	6' 4 1/16"	49.49 SF 5.50 SY	49.49 SF 5.50 SY
WA-8	7' 9 3/4"	4' 3 15/16"	33.82 SF 3.76 SY	33.82 SF 3.76 SY
WA-1	7' 9 3/4"	4' 3/16"	31.34 SF 3.48 SY	31.34 SF 3.48 SY
WA-2	7' 9 3/4"	2' 7 1/2"	20.49 SF 2.28 SY	20.49 SF 2.28 SY
WA-3	7' 9 3/4"	4' 2 3/16"	32.65 SF 3.63 SY	32.65 SF 3.63 SY
WA-4	7' 9 3/4"	4' 9 3/8"	37.36 SF 4.15 SY	37.36 SF 4.15 SY
TOTALS		26' 3 1/4"	205.16 SF 22.80 SY	205.16 SF 22.80 SY

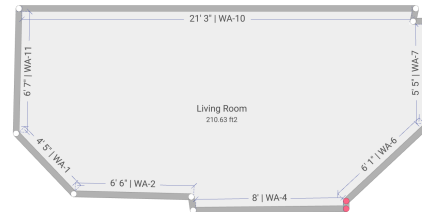


R2 - Living Room | Interior

2025.03.11 @ 4:03:50 PM (GMT-06:00) America/Chicago

Summary

LEVEL	Ground / 1st Floor
FLOOR	210.63 SF 23.40 SY
FLOOR PERIMETER	60' 10 1/2"
FLOOR PERIMETER - SUBTRACTIONS	60' 10 1/2"
WALLS	476.94 SF 52.99 SY
WALLS & CEILING	708.29 SF 78.70 SY
VOLUME	1650.23 CF 61.12 CY
NOTES	



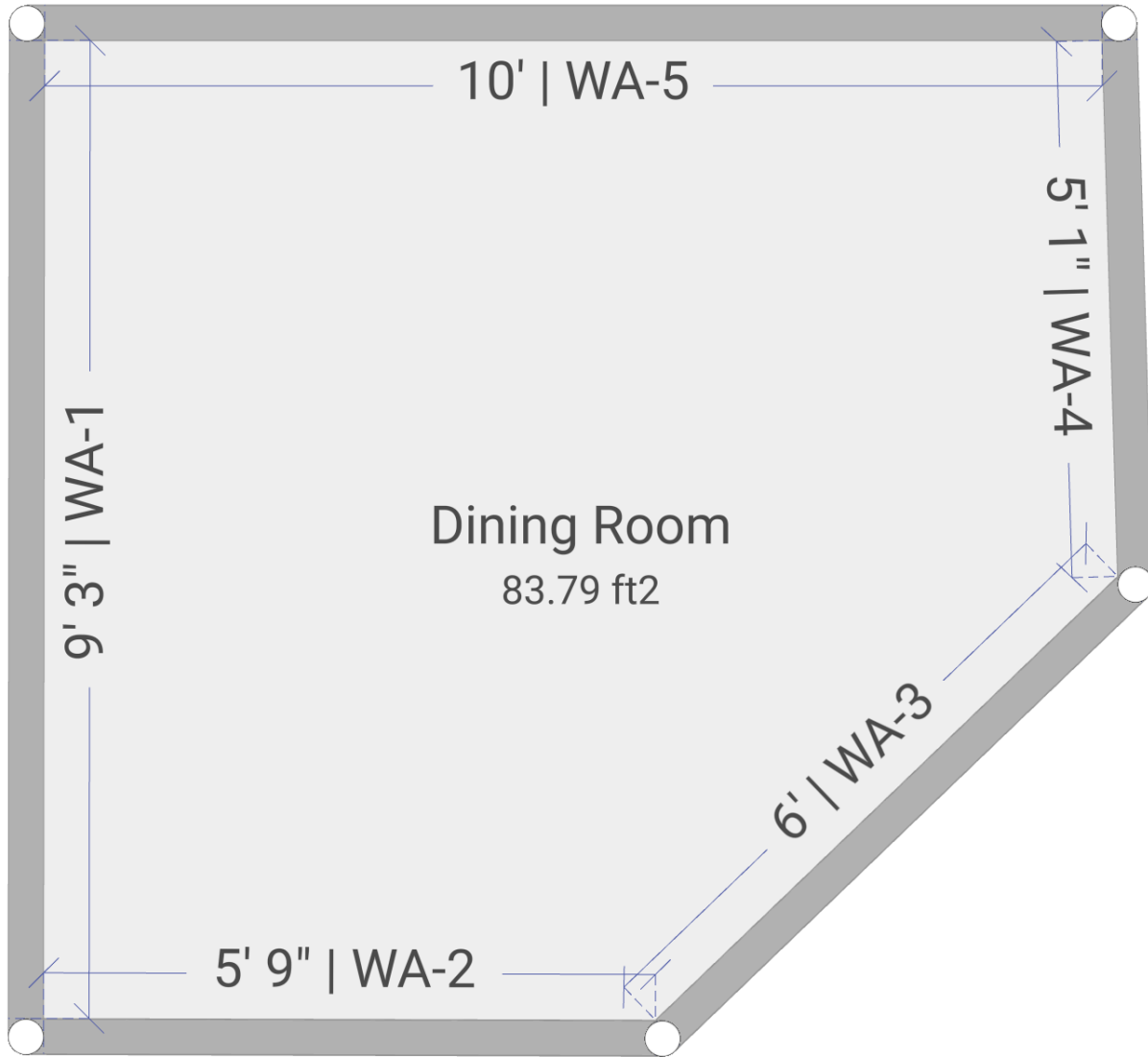
DESCRIPTION NOTES	No description / notes provided.
---------------------	----------------------------------

Ceiling Specs | Type: Undefined

CEIL. PERIMETER	63' 5 1/16"	CEIL. PERIMETER - SUBTRACTIONS	63' 5 1/16"
CEIL. AREA	231.35 SF 25.71 SY	CEIL. AREA - SUBTRACTIONS	231.35 SF 25.71 SY

Walls

TAG	HEIGHT	WIDTH	AREA	AREA - SUBTRACTIONS
WA-1	7' 10"	4' 5 1/16"	34.64 SF 3.85 SY	34.64 SF 3.85 SY
WA-11	7' 10"	6' 7"	51.56 SF 5.73 SY	51.56 SF 5.73 SY
WA-10	7' 10"	21' 3 3/8"	166.74 SF 18.53 SY	166.74 SF 18.53 SY
WA-9	7' 10"	8 5/8"	5.63 SF 0.63 SY	5.63 SF 0.63 SY
WA-8	7' 10"	9 5/16"	6.09 SF 0.68 SY	6.09 SF 0.68 SY
WA-7	7' 10"	5' 5 3/16"	42.55 SF 4.73 SY	42.55 SF 4.73 SY
WA-6	7' 10"	6' 13/16"	47.53 SF 5.28 SY	47.53 SF 5.28 SY
WA-5	7' 10"	4"	2.61 SF 0.29 SY	2.61 SF 0.29 SY
WA-4	7' 10"	8' 7/16"	62.98 SF 7.00 SY	62.98 SF 7.00 SY
WA-3	7' 10"	8 15/16"	5.82 SF 0.65 SY	5.82 SF 0.65 SY
WA-2	7' 10"	6' 5 13/16"	50.80 SF 5.64 SY	50.80 SF 5.64 SY
TOTALS		60' 10 1/2"	476.94 SF 52.99 SY	476.94 SF 52.99 SY

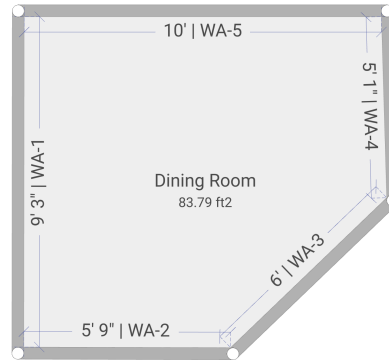


R3 - Dining Room | Interior

2025.03.11 @ 4:05:46 PM (GMT-06:00) America/Chicago

Summary

LEVEL	Ground / 1st Floor
FLOOR	83.79 SF 9.31 SY
FLOOR PERIMETER	36' 1/4"
FLOOR PERIMETER - SUBTRACTIONS	36' 1/4"
WALLS	257.63 SF 28.63 SY
WALLS & CEILING	353.85 SF 39.32 SY
VOLUME	599.31 CF 22.20 CY
NOTES	



DESCRIPTION NOTES	No description / notes provided.
---------------------	----------------------------------

Ceiling Specs | Type: Undefined

CEIL. PERIMETER	38' 6 3/4"	CEIL. PERIMETER - SUBTRACTIONS	38' 6 3/4"
CEIL. AREA	96.22 SF 10.69 SY	CEIL. AREA - SUBTRACTIONS	96.22 SF 10.69 SY

Walls

TAG	HEIGHT	WIDTH	AREA	AREA - SUBTRACTIONS
WA-1	7' 1 13/16"	9' 2 9/16"	65.89 SF 7.32 SY	65.89 SF 7.32 SY
WA-5	7' 1 13/16"	9' 11 1/2"	71.24 SF 7.92 SY	71.24 SF 7.92 SY
WA-4	7' 1 13/16"	5' 5/8"	36.13 SF 4.01 SY	36.13 SF 4.01 SY
WA-3	7' 1 13/16"	6' 7/16"	43.16 SF 4.80 SY	43.16 SF 4.80 SY
WA-2	7' 1 13/16"	5' 9 3/16"	41.22 SF 4.58 SY	41.22 SF 4.58 SY
TOTALS		36' 1/4"	257.63 SF 28.63 SY	257.63 SF 28.63 SY

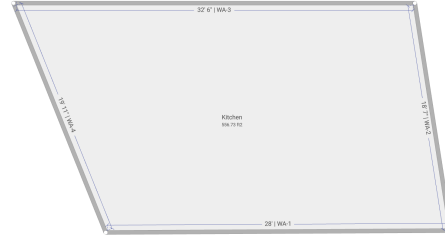


R4 - Kitchen | Interior

2025.03.11 @ 4:07:43 PM (GMT-06:00) America/Chicago

Summary

LEVEL	Ground / 1st Floor
FLOOR	556.73 SF 61.86 SY
FLOOR PERIMETER	98' 11 1/4"
FLOOR PERIMETER - SUBTRACTIONS	98' 11 1/4"
WALLS	10.18 SF 1.13 SY
WALLS & CEILING	600.35 SF 66.71 SY
VOLUME	57.29 CF 2.12 CY
NOTES	



DESCRIPTION NOTES	No description / notes provided.
---------------------	----------------------------------

Ceiling Specs | Type: Undefined

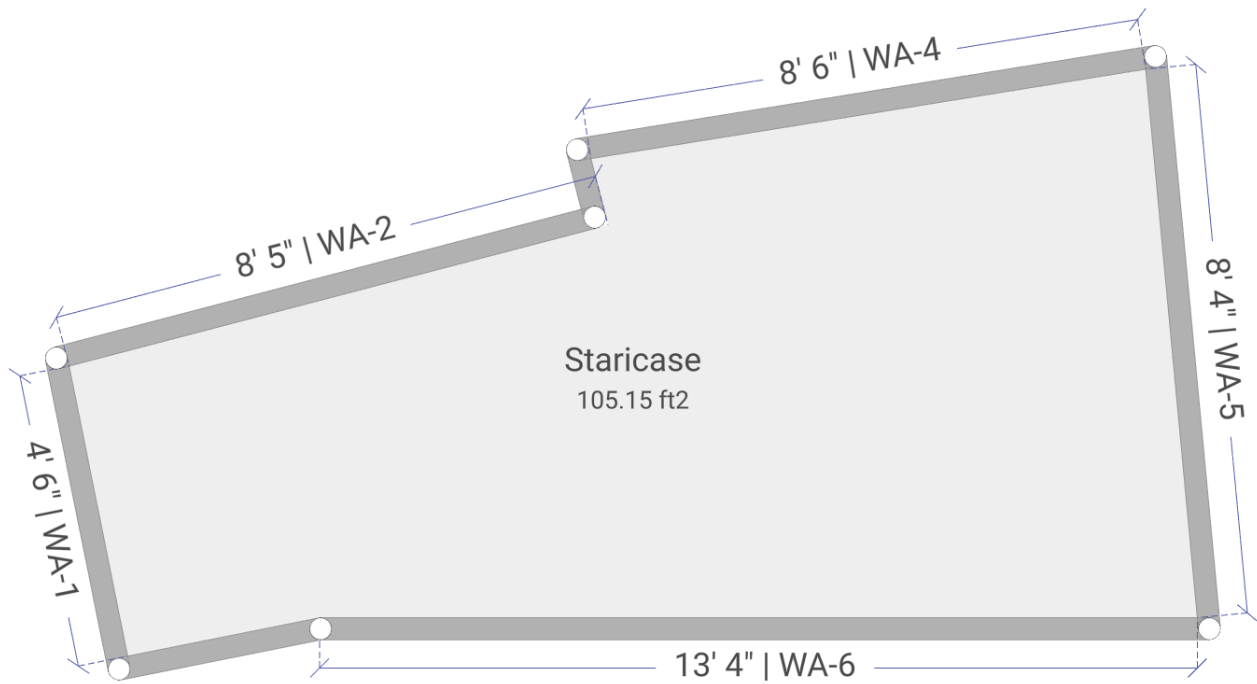
CEIL. PERIMETER	101' 8 5/8"	CEIL. PERIMETER - SUBTRACTIONS	101' 8 5/8"
CEIL. AREA	590.17 SF 65.57 SY	CEIL. AREA - SUBTRACTIONS	590.17 SF 65.57 SY

Walls

TAG	HEIGHT	WIDTH	AREA	AREA - SUBTRACTIONS
WA-1	1 1/4"	27' 11 1/2"	2.88 SF 0.32 SY	2.88 SF 0.32 SY
WA-4	1 1/4"	19' 10 15/16"	2.05 SF 0.23 SY	2.05 SF 0.23 SY
WA-3	1 1/4"	32' 6 1/4"	3.35 SF 0.37 SY	3.35 SF 0.37 SY
WA-2	1 1/4"	18' 6 9/16"	1.91 SF 0.21 SY	1.91 SF 0.21 SY
TOTALS		98' 11 1/4"	10.18 SF 1.13 SY	10.18 SF 1.13 SY

R5 - Staircase | Interior (Height: 3 3/16")

2025.03.11 @ 4:09:02 PM (GMT-06:00) America/Chicago

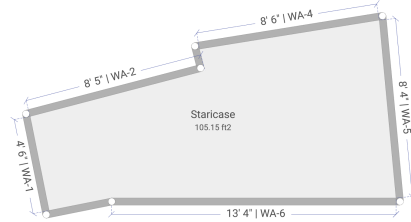


R5 - Staricase | Interior

2025.03.11 @ 4:09:02 PM (GMT-06:00) America/Chicago

Summary

LEVEL	Ground / 1st Floor
FLOOR	105.15 SF 11.68 SY
FLOOR PERIMETER	47' 1 1/2"
FLOOR PERIMETER - SUBTRACTIONS	47' 1 1/2"
WALLS	12.54 SF 1.39 SY
WALLS & CEILING	115.69 SF 12.85 SY
VOLUME	27.98 CF 1.04 CY
NOTES	



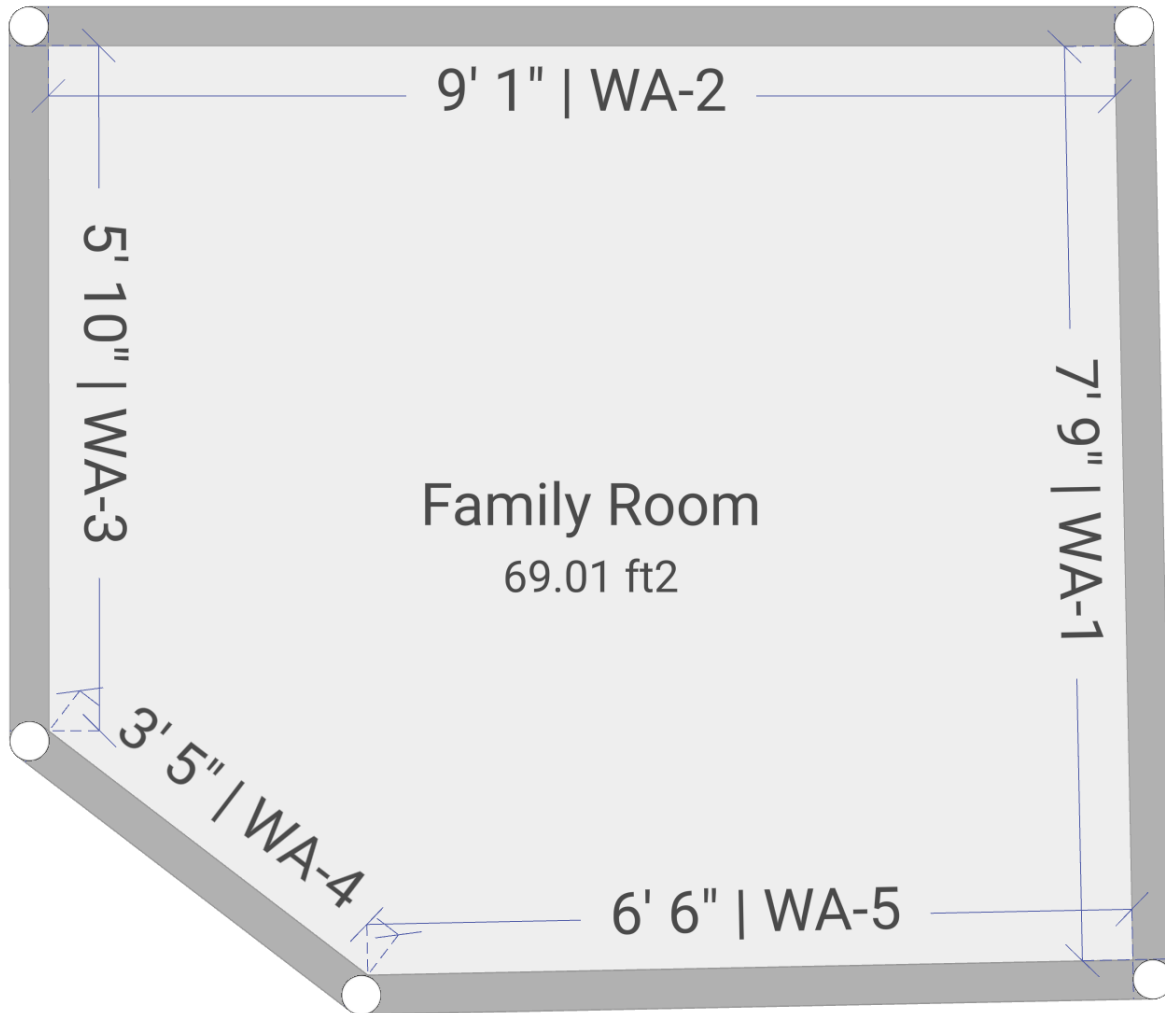
DESCRIPTION NOTES	No description / notes provided.
---------------------	----------------------------------

Ceiling Specs | Type: Undefined

CEIL. PERIMETER	47' 4 1/16"	CEIL. PERIMETER - SUBTRACTIONS	47' 4 1/16"
CEIL. AREA	103.15 SF 11.46 SY	CEIL. AREA - SUBTRACTIONS	103.15 SF 11.46 SY

Walls

TAG	HEIGHT	WIDTH	AREA	AREA - SUBTRACTIONS
WA-2	3 3/16"	8' 5 3/8"	2.25 SF 0.25 SY	2.25 SF 0.25 SY
WA-3	3 3/16"	1' 1/2"	0.28 SF 0.03 SY	0.28 SF 0.03 SY
WA-4	3 3/16"	8' 6 1/4"	2.27 SF 0.25 SY	2.27 SF 0.25 SY
WA-5	3 3/16"	8' 4 1/4"	2.22 SF 0.25 SY	2.22 SF 0.25 SY
WA-6	3 3/16"	13' 3 11/16"	3.54 SF 0.39 SY	3.54 SF 0.39 SY
WA-8	3 3/16"	2' 11 5/8"	0.79 SF 0.09 SY	0.79 SF 0.09 SY
WA-1	3 3/16"	4' 5 7/8"	1.19 SF 0.13 SY	1.19 SF 0.13 SY
TOTALS		47' 1 1/2"	12.54 SF 1.39 SY	12.54 SF 1.39 SY

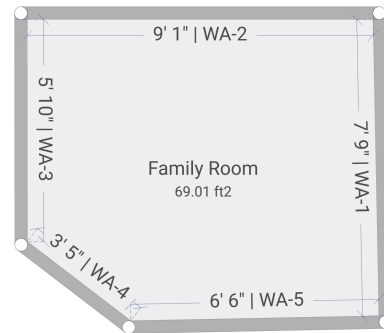


R6 - Family Room | Interior

2025.03.11 @ 4:10:28 PM (GMT-06:00) America/Chicago

Summary

LEVEL	2nd Floor
FLOOR	69.01 SF 7.67 SY
FLOOR PERIMETER	32' 7 1/16"
FLOOR PERIMETER - SUBTRACTIONS	32' 7 1/16"
WALLS	116.37 SF 12.93 SY
WALLS & CEILING	196.67 SF 21.85 SY
VOLUME	246.42 CF 9.13 CY
NOTES	Family room second



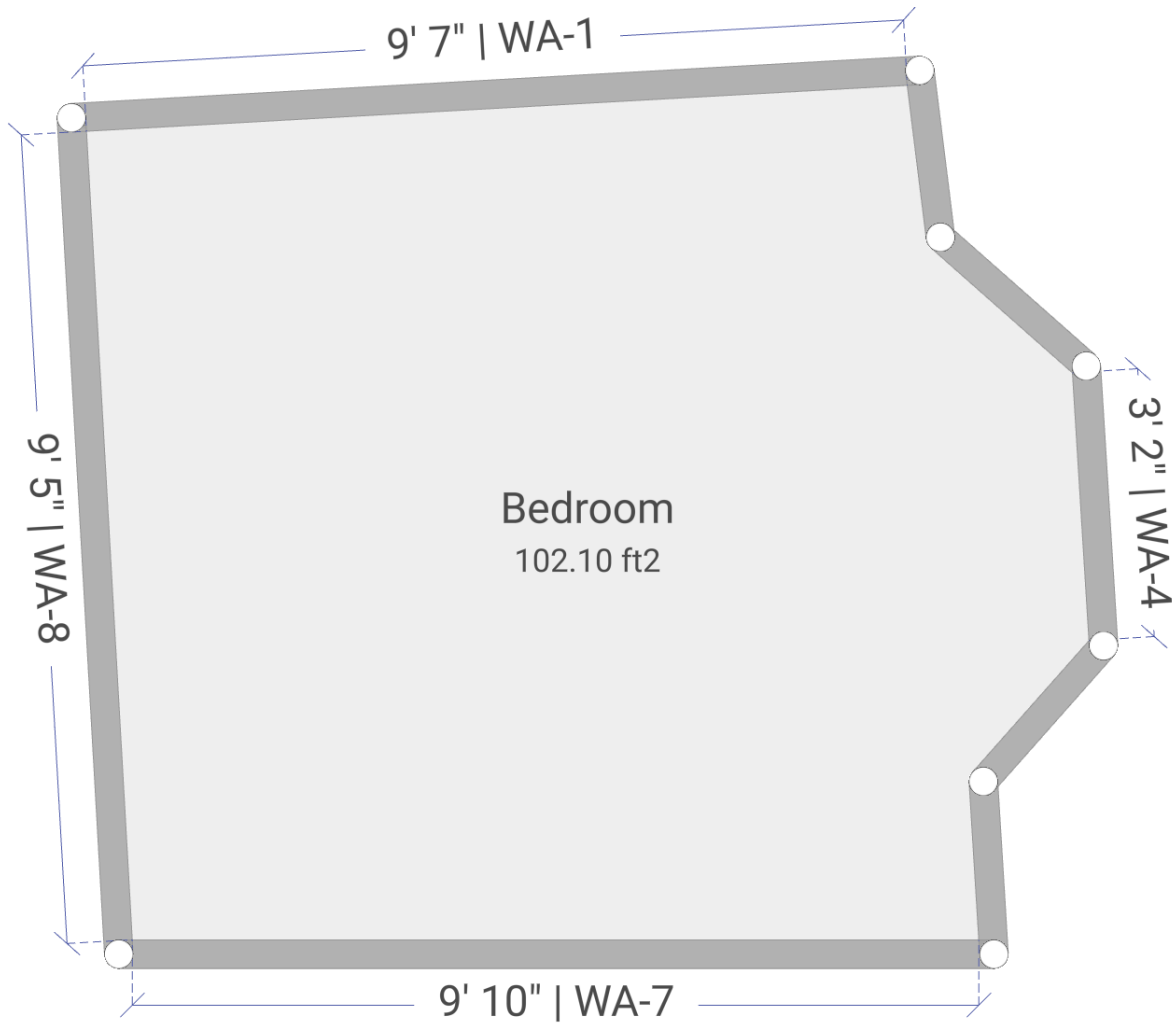
DESCRIPTION NOTES	Family room second
---------------------	--------------------

Ceiling Specs | Type: Undefined

CEIL. PERIMETER	35' 1 11/16"	CEIL. PERIMETER - SUBTRACTIONS	35' 1 11/16"
CEIL. AREA	80.29 SF 8.92 SY	CEIL. AREA - SUBTRACTIONS	80.29 SF 8.92 SY

Walls

TAG	HEIGHT	WIDTH	AREA	AREA - SUBTRACTIONS
WA-3	3' 6 7/8"	5' 9 15/16"	20.81 SF 2.31 SY	20.81 SF 2.31 SY
WA-2	3' 6 7/8"	9' 13/16"	32.38 SF 3.60 SY	32.38 SF 3.60 SY
WA-1	3' 6 7/8"	7' 9 5/16"	27.76 SF 3.08 SY	27.76 SF 3.08 SY
WA-5	3' 6 7/8"	6' 6 1/16"	23.23 SF 2.58 SY	23.23 SF 2.58 SY
WA-4	3' 6 7/8"	3' 4 15/16"	12.19 SF 1.35 SY	12.19 SF 1.35 SY
TOTALS		32' 7 1/16"	116.37 SF 12.93 SY	116.37 SF 12.93 SY

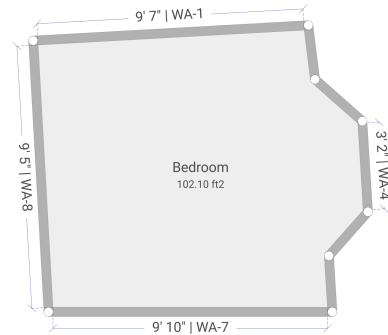


R7 - Bedroom | Interior

2025.03.11 @ 4:11:44 PM (GMT-06:00) America/Chicago

Summary

LEVEL	2nd Floor
FLOOR	102.10 SF 11.34 SY
FLOOR PERIMETER	40' 2 1/16"
FLOOR PERIMETER - SUBTRACTIONS	40' 2 1/16"
WALLS	11.32 SF 1.26 SY
WALLS & CEILING	113.42 SF 12.60 SY
VOLUME	28.78 CF 1.07 CY
NOTES	Bedroom kids



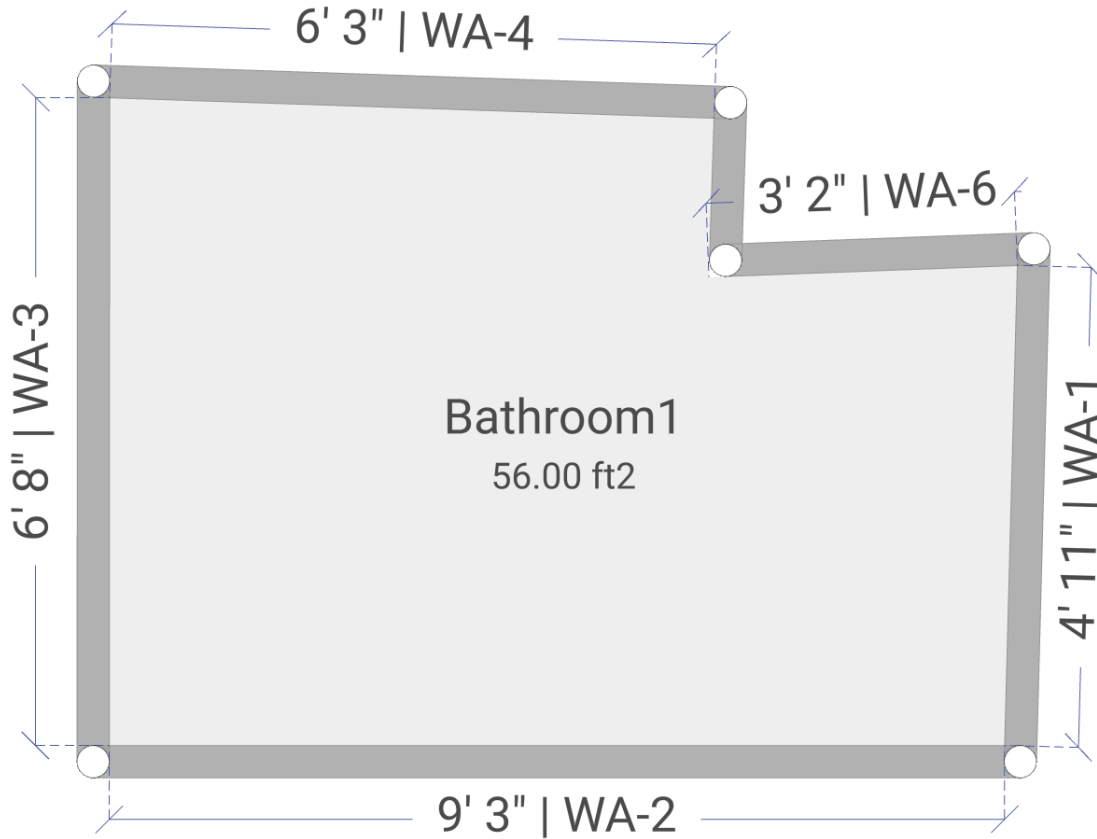
DESCRIPTION NOTES	Bedroom kids
---------------------	--------------

Ceiling Specs | Type: Undefined

CEIL. PERIMETER	40' 2 1/16"	CEIL. PERIMETER - SUBTRACTIONS	40' 2 1/16"
CEIL. AREA	102.10 SF 11.34 SY	CEIL. AREA - SUBTRACTIONS	102.10 SF 11.34 SY

Walls

TAG	HEIGHT	WIDTH	AREA	AREA - SUBTRACTIONS
WA-1	3 3/8"	9' 7"	2.70 SF 0.30 SY	2.70 SF 0.30 SY
WA-2	3 3/8"	1' 10 7/16"	0.53 SF 0.06 SY	0.53 SF 0.06 SY
WA-3	3 3/8"	2' 3 1/8"	0.64 SF 0.07 SY	0.64 SF 0.07 SY
WA-4	3 3/8"	3' 1 9/16"	0.88 SF 0.10 SY	0.88 SF 0.10 SY
WA-5	3 3/8"	2' 1 3/8"	0.60 SF 0.07 SY	0.60 SF 0.07 SY
WA-6	3 3/8"	1' 10 15/16"	0.54 SF 0.06 SY	0.54 SF 0.06 SY
WA-7	3 3/8"	9' 10 7/16"	2.78 SF 0.31 SY	2.78 SF 0.31 SY
WA-8	3 3/8"	9' 5 5/16"	2.66 SF 0.30 SY	2.66 SF 0.30 SY
TOTALS		40' 2 1/16"	11.32 SF 1.26 SY	11.32 SF 1.26 SY

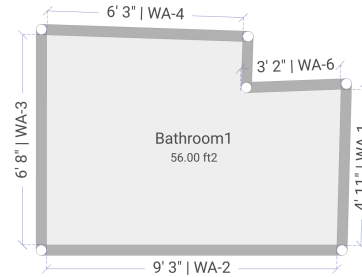


R8 - Bathroom1 | Interior

2025.03.11 @ 4:12:47 PM (GMT-06:00) America/Chicago

Summary

LEVEL	2nd Floor
FLOOR	56.00 SF 6.22 SY
FLOOR PERIMETER	31' 11 5/16"
FLOOR PERIMETER - SUBTRACTIONS	31' 11 5/16"
WALLS	2.67 SF 0.30 SY
WALLS & CEILING	58.67 SF 6.52 SY
VOLUME	4.68 CF
NOTES	Bathroom second floo



DESCRIPTION NOTES	Bathroom second floo
---------------------	----------------------

Ceiling Specs | Type: Undefined

CEIL. PERIMETER	31' 11 5/16"	CEIL. PERIMETER - SUBTRACTIONS	31' 11 5/16"
CEIL. AREA	56.00 SF 6.22 SY	CEIL. AREA - SUBTRACTIONS	56.00 SF 6.22 SY

Walls

TAG	HEIGHT	WIDTH	AREA	AREA - SUBTRACTIONS
WA-1	1"	4' 11 7/16"	0.41 SF 0.05 SY	0.41 SF 0.05 SY
WA-2	1"	9' 2 7/8"	0.77 SF 0.09 SY	0.77 SF 0.09 SY
WA-3	1"	6' 8 3/16"	0.56 SF 0.06 SY	0.56 SF 0.06 SY
WA-4	1"	6' 2 7/8"	0.52 SF 0.06 SY	0.52 SF 0.06 SY
WA-5	1"	1' 7 11/16"	0.14 SF 0.02 SY	0.14 SF 0.02 SY
WA-6	1"	3' 2 1/4"	0.27 SF 0.03 SY	0.27 SF 0.03 SY
TOTALS		31' 11 5/16"	2.67 SF 0.30 SY	2.67 SF 0.30 SY

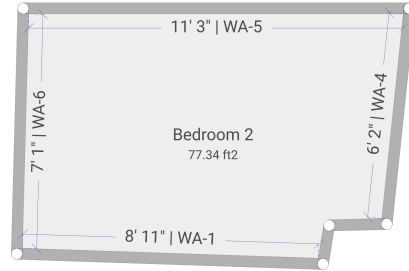


R9 - Bedroom 2 | Interior

2025.03.11 @ 4:13:35 PM (GMT-06:00) America/Chicago

Summary

LEVEL	2nd Floor
FLOOR	77.34 SF 8.59 SY
FLOOR PERIMETER	36' 3 3/4"
FLOOR PERIMETER - SUBTRACTIONS	36' 3 3/4"
WALLS	143.47 SF 15.94 SY
WALLS & CEILING	233.35 SF 25.93 SY
VOLUME	305.57 CF 11.32 CY
NOTES	Bedroom 2



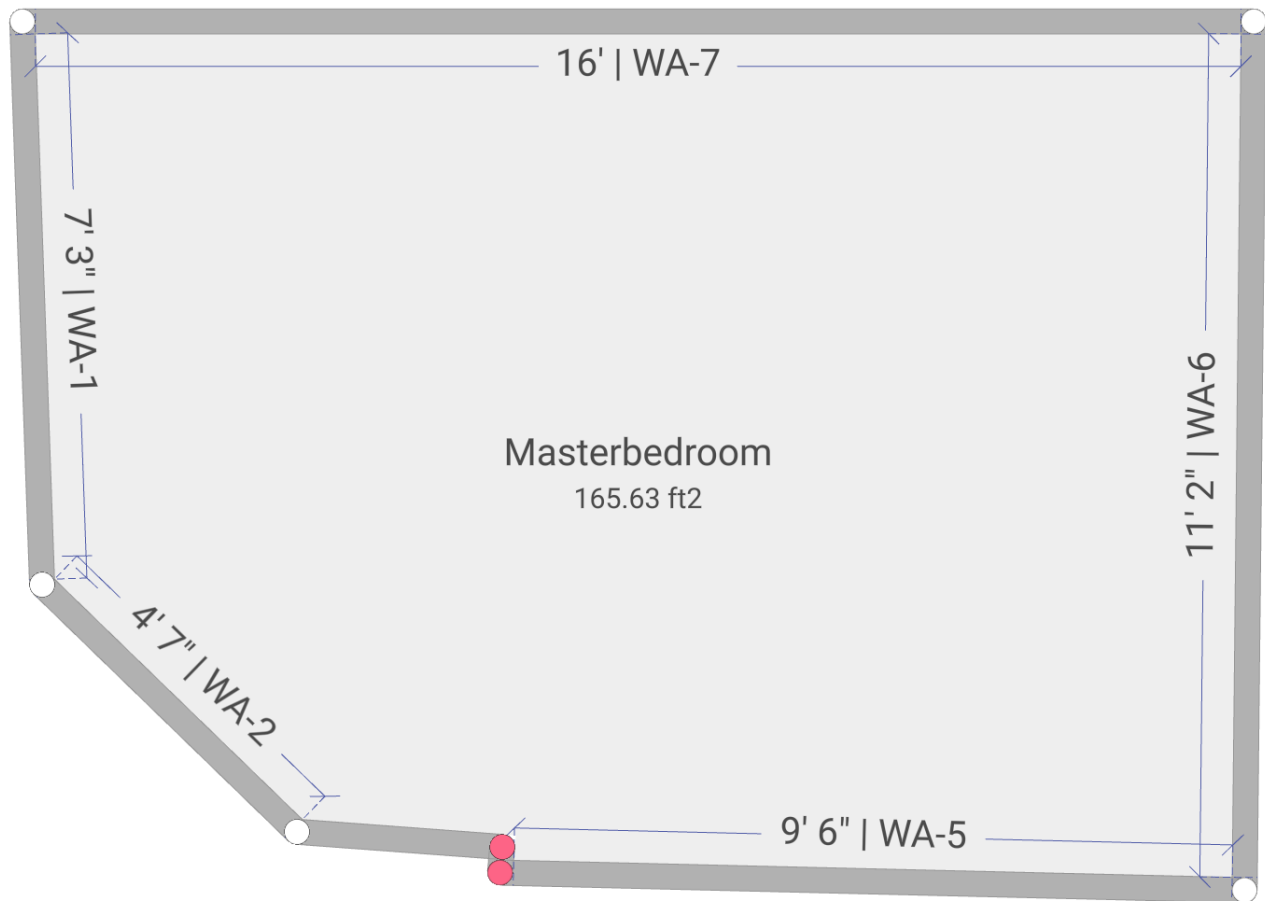
DESCRIPTION NOTES	Bedroom 2
---------------------	-----------

Ceiling Specs | Type: Undefined

CEIL. PERIMETER	38' 11 3/4"	CEIL. PERIMETER - SUBTRACTIONS	38' 11 3/4"
CEIL. AREA	89.89 SF 9.99 SY	CEIL. AREA - SUBTRACTIONS	89.89 SF 9.99 SY

Walls

TAG	HEIGHT	WIDTH	AREA	AREA - SUBTRACTIONS
WA-5	3' 11 7/16"	11' 3 1/4"	44.53 SF 4.95 SY	44.53 SF 4.95 SY
WA-4	3' 11 7/16"	6' 2 1/4"	24.46 SF 2.72 SY	24.46 SF 2.72 SY
WA-3	3' 11 7/16"	1' 8 11/16"	6.81 SF 0.76 SY	6.81 SF 0.76 SY
WA-2	3' 11 7/16"	1' 2"	4.61 SF 0.51 SY	4.61 SF 0.51 SY
WA-1	3' 11 7/16"	8' 10 7/8"	35.19 SF 3.91 SY	35.19 SF 3.91 SY
WA-6	3' 11 7/16"	7' 11/16"	27.88 SF 3.10 SY	27.88 SF 3.10 SY
TOTALS		36' 3 3/4"	143.47 SF 15.94 SY	143.47 SF 15.94 SY

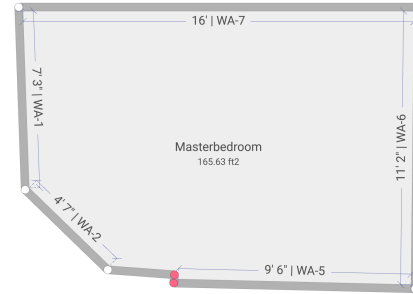


R10 - Masterbedroom | Interior

2025.03.11 @ 4:14:23 PM (GMT-06:00) America/Chicago

Summary

LEVEL	2nd Floor
FLOOR	165.63 SF 18.40 SY
FLOOR PERIMETER	51' 8 7/16"
FLOOR PERIMETER - SUBTRACTIONS	51' 8 7/16"
WALLS	3.47 SF 0.39 SY
WALLS & CEILING	186.77 SF 20.75 SY
VOLUME	11.12 CF
NOTES	Masterbedroom



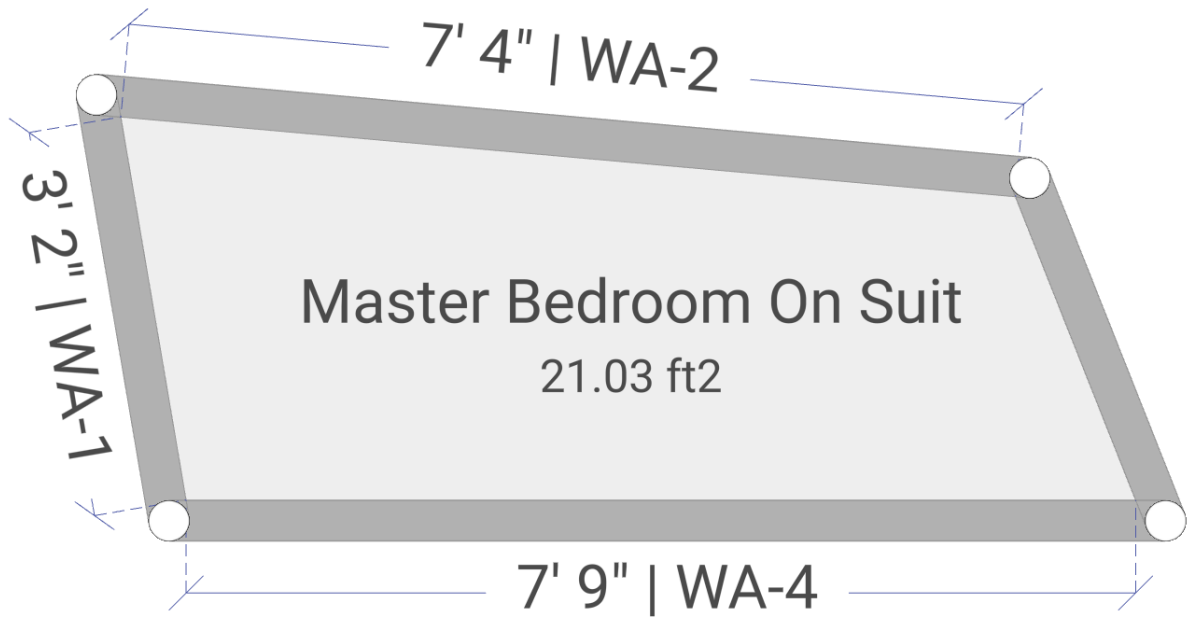
DESCRIPTION NOTES	Masterbedroom
---------------------	---------------

Ceiling Specs | Type: Undefined

CEIL. PERIMETER	54' 3 7/16"	CEIL. PERIMETER - SUBTRACTIONS	54' 3 7/16"
CEIL. AREA	183.29 SF 20.37 SY	CEIL. AREA - SUBTRACTIONS	183.29 SF 20.37 SY

Walls

TAG	HEIGHT	WIDTH	AREA	AREA - SUBTRACTIONS
WA-7	13/16"	15' 11 15/16"	1.07 SF 0.12 SY	1.07 SF 0.12 SY
WA-6	13/16"	11' 2 1/4"	0.75 SF 0.08 SY	0.75 SF 0.08 SY
WA-5	13/16"	9' 6 3/8"	0.64 SF 0.07 SY	0.64 SF 0.07 SY
WA-4	13/16"	4"	0.02 SF 0.00 SY	0.02 SF 0.00 SY
WA-3	13/16"	2' 10 1/16"	0.19 SF 0.02 SY	0.19 SF 0.02 SY
WA-2	13/16"	4' 6 15/16"	0.31 SF 0.03 SY	0.31 SF 0.03 SY
WA-1	13/16"	7' 2 13/16"	0.49 SF 0.05 SY	0.49 SF 0.05 SY
TOTALS		51' 8 7/16"	3.47 SF 0.39 SY	3.47 SF 0.39 SY

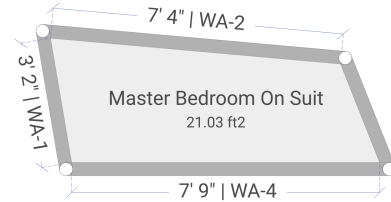


R11 - Master Bedroom On Suit | Interior

2025.03.11 @ 4:15:36 PM (GMT-06:00) America/Chicago

Summary

LEVEL	2nd Floor
FLOOR	21.03 SF 2.34 SY
FLOOR PERIMETER	21' 1/8"
FLOOR PERIMETER - SUBTRACTIONS	21' 1/8"
WALLS	70.85 SF 7.87 SY
WALLS & CEILING	91.88 SF 10.21 SY
VOLUME	70.90 CF 2.63 CY
NOTES	Master Bedroom On Suit



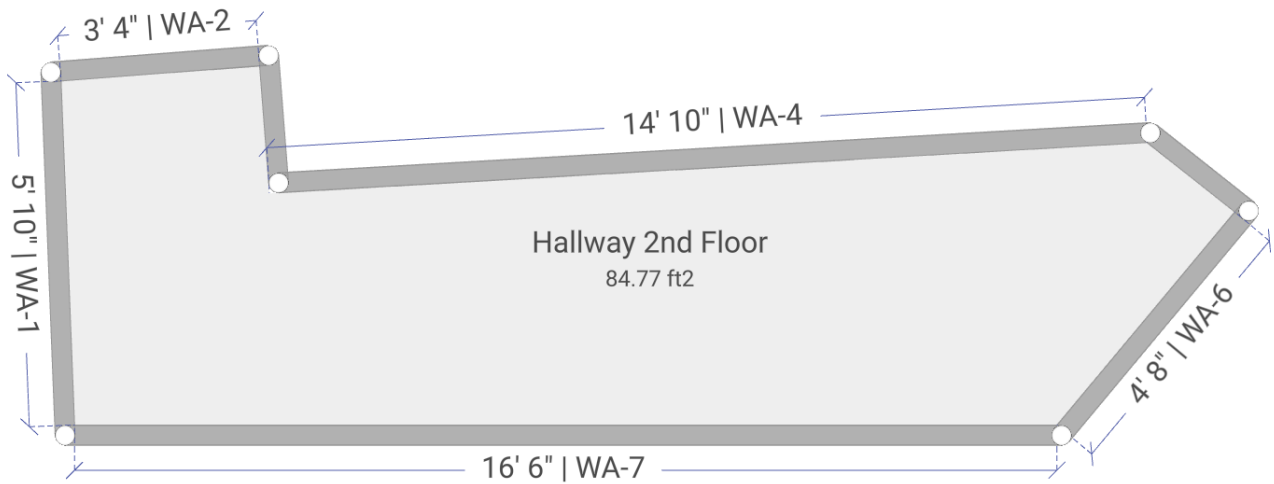
DESCRIPTION NOTES	Master Bedroom On Suit
---------------------	------------------------

Ceiling Specs | Type: Undefined

CEIL. PERIMETER	21' 1/8"	CEIL. PERIMETER - SUBTRACTIONS	21' 1/8"
CEIL. AREA	21.03 SF 2.34 SY	CEIL. AREA - SUBTRACTIONS	21.03 SF 2.34 SY

Walls

TAG	HEIGHT	WIDTH	AREA	AREA - SUBTRACTIONS
WA-2	3' 4 7/16"	7' 4 3/8"	24.83 SF 2.76 SY	24.83 SF 2.76 SY
WA-3	3' 4 7/16"	2' 8 1/8"	9.02 SF 1.00 SY	9.02 SF 1.00 SY
WA-4	3' 4 7/16"	7' 9 7/16"	26.25 SF 2.92 SY	26.25 SF 2.92 SY
WA-1	3' 4 7/16"	3' 2 1/4"	10.74 SF 1.19 SY	10.74 SF 1.19 SY
TOTALS		21' 1/8"	70.85 SF 7.87 SY	70.85 SF 7.87 SY

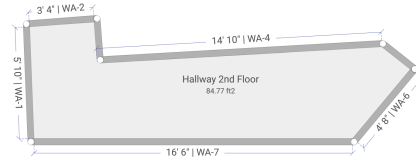


R12 - Hallway 2nd Floor | Interior

2025.03.11 @ 4:17:09 PM (GMT-06:00) America/Chicago

Summary

LEVEL	2nd Floor
FLOOR	84.77 SF 9.42 SY
FLOOR PERIMETER	49' 2 3/8"
FLOOR PERIMETER - SUBTRACTIONS	49' 2 3/8"
WALLS	356.19 SF 39.58 SY
WALLS & CEILING	440.97 SF 49.00 SY
VOLUME	613.76 CF 22.73 CY
NOTES	Hallway 2nd Floor



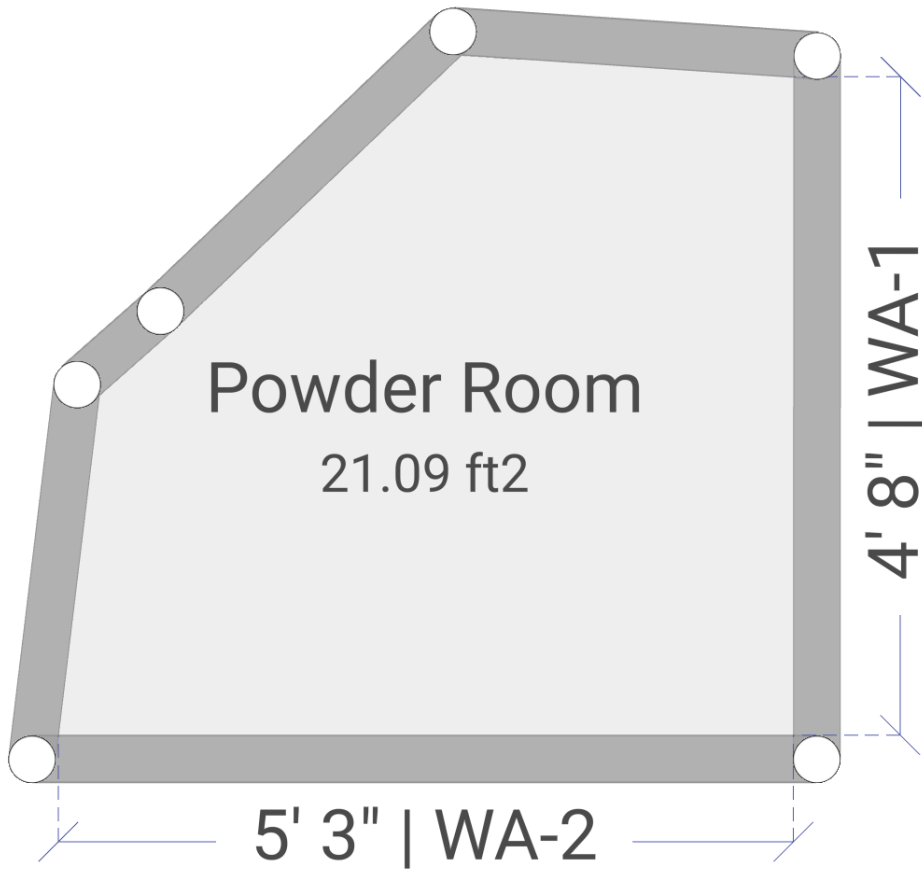
DESCRIPTION NOTES	Hallway 2nd Floor
---------------------	-------------------

Ceiling Specs | Type: Undefined

CEIL. PERIMETER	49' 2 3/8"	CEIL. PERIMETER - SUBTRACTIONS	49' 2 3/8"
CEIL. AREA	84.77 SF 9.42 SY	CEIL. AREA - SUBTRACTIONS	84.77 SF 9.42 SY

Walls

TAG	HEIGHT	WIDTH	AREA	AREA - SUBTRACTIONS
WA-1	7' 2 7/8"	5' 9 9/16"	41.98 SF 4.66 SY	41.98 SF 4.66 SY
WA-2	7' 2 7/8"	3' 4 1/4"	24.27 SF 2.70 SY	24.27 SF 2.70 SY
WA-3	7' 2 7/8"	2' 1 13/16"	15.56 SF 1.73 SY	15.56 SF 1.73 SY
WA-4	7' 2 7/8"	14' 9 5/8"	107.17 SF 11.91 SY	107.17 SF 11.91 SY
WA-5	7' 2 7/8"	1' 10 9/16"	13.62 SF 1.51 SY	13.62 SF 1.51 SY
WA-6	7' 2 7/8"	4' 8 1/16"	33.83 SF 3.76 SY	33.83 SF 3.76 SY
WA-7	7' 2 7/8"	16' 6 1/2"	119.76 SF 13.31 SY	119.76 SF 13.31 SY
TOTALS		49' 2 3/8"	356.19 SF 39.58 SY	356.19 SF 39.58 SY

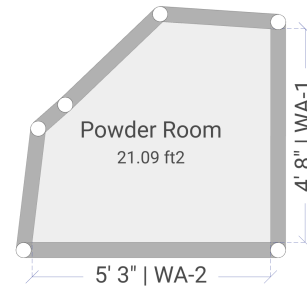


R13 - Powder Room | Interior

2025.03.11 @ 4:18:23 PM (GMT-06:00) America/Chicago

Summary

LEVEL	Ground / 1st Floor
FLOOR	21.09 SF 2.34 SY
FLOOR PERIMETER	18' 3 15/16"
FLOOR PERIMETER - SUBTRACTIONS	18' 3 15/16"
WALLS	114.19 SF 12.69 SY
WALLS & CEILING	135.27 SF 15.03 SY
VOLUME	131.36 CF 4.87 CY
NOTES	Powderroom



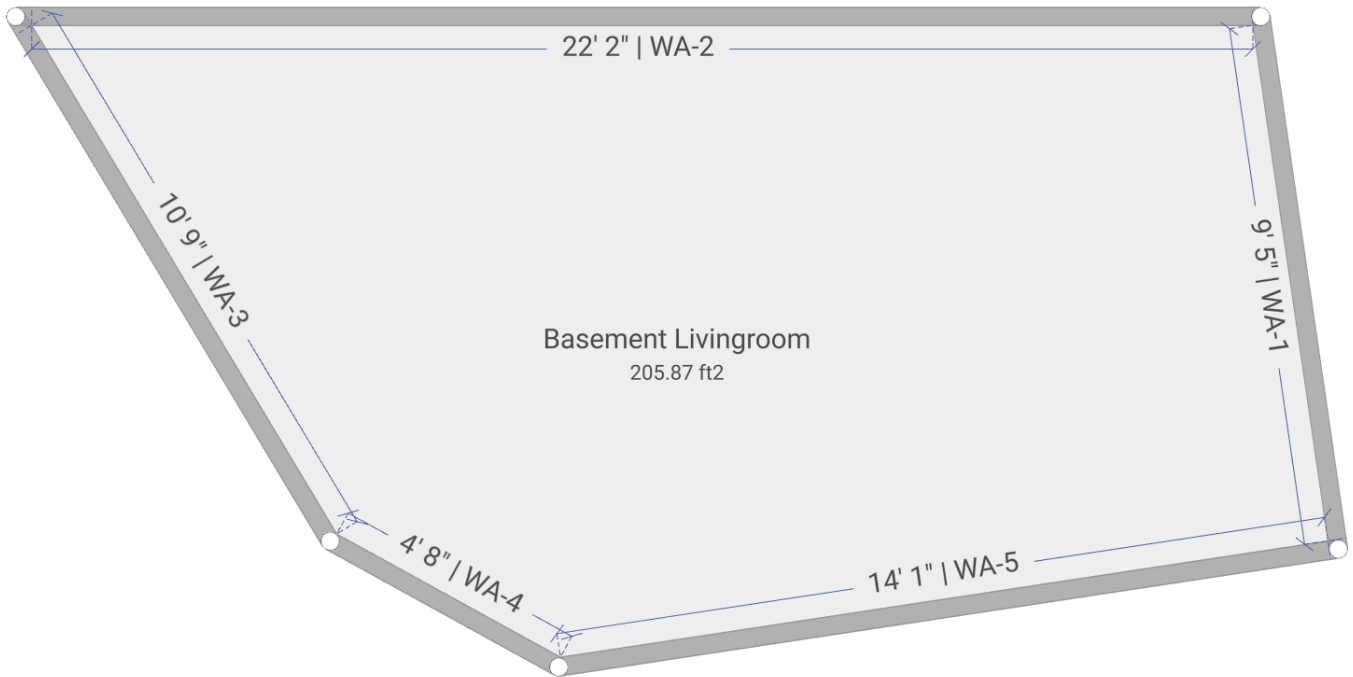
DESCRIPTION NOTES	Powderroom
---------------------	------------

Ceiling Specs | Type: Undefined

CEIL. PERIMETER	18' 3 15/16"	CEIL. PERIMETER - SUBTRACTIONS	18' 3 15/16"
CEIL. AREA	21.09 SF 2.34 SY	CEIL. AREA - SUBTRACTIONS	21.09 SF 2.34 SY

Walls

TAG	HEIGHT	WIDTH	AREA	AREA - SUBTRACTIONS
WA-1	6' 2 3/4"	4' 8 7/16"	29.29 SF 3.25 SY	29.29 SF 3.25 SY
WA-2	6' 2 3/4"	5' 3"	32.71 SF 3.63 SY	32.71 SF 3.63 SY
WA-3	6' 2 3/4"	2' 5 3/8"	15.23 SF 1.69 SY	15.23 SF 1.69 SY
WA-4	6' 2 3/4"	8 13/16"	4.57 SF 0.51 SY	4.57 SF 0.51 SY
WA-5	6' 2 3/4"	2' 9 13/16"	17.57 SF 1.95 SY	17.57 SF 1.95 SY
WA-6	6' 2 3/4"	2' 4 9/16"	14.81 SF 1.65 SY	14.81 SF 1.65 SY
TOTALS		18' 3 15/16"	114.19 SF 12.69 SY	114.19 SF 12.69 SY

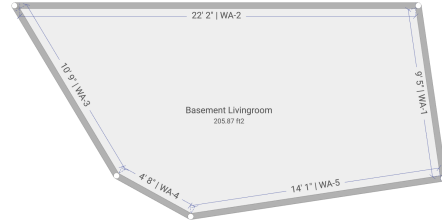


R14 - Basement Livingroom | Interior

2025.03.11 @ 4:19:38 PM (GMT-06:00) America/Chicago

Summary

LEVEL	Basement / Lower Lvl 1
FLOOR	205.87 SF 22.87 SY
FLOOR PERIMETER	61' 5/8"
FLOOR PERIMETER - SUBTRACTIONS	61' 5/8"
WALLS	523.68 SF 58.19 SY
WALLS & CEILING	750.37 SF 83.37 SY
VOLUME	1765.82 CF 65.40 CY
NOTES	Basement living room



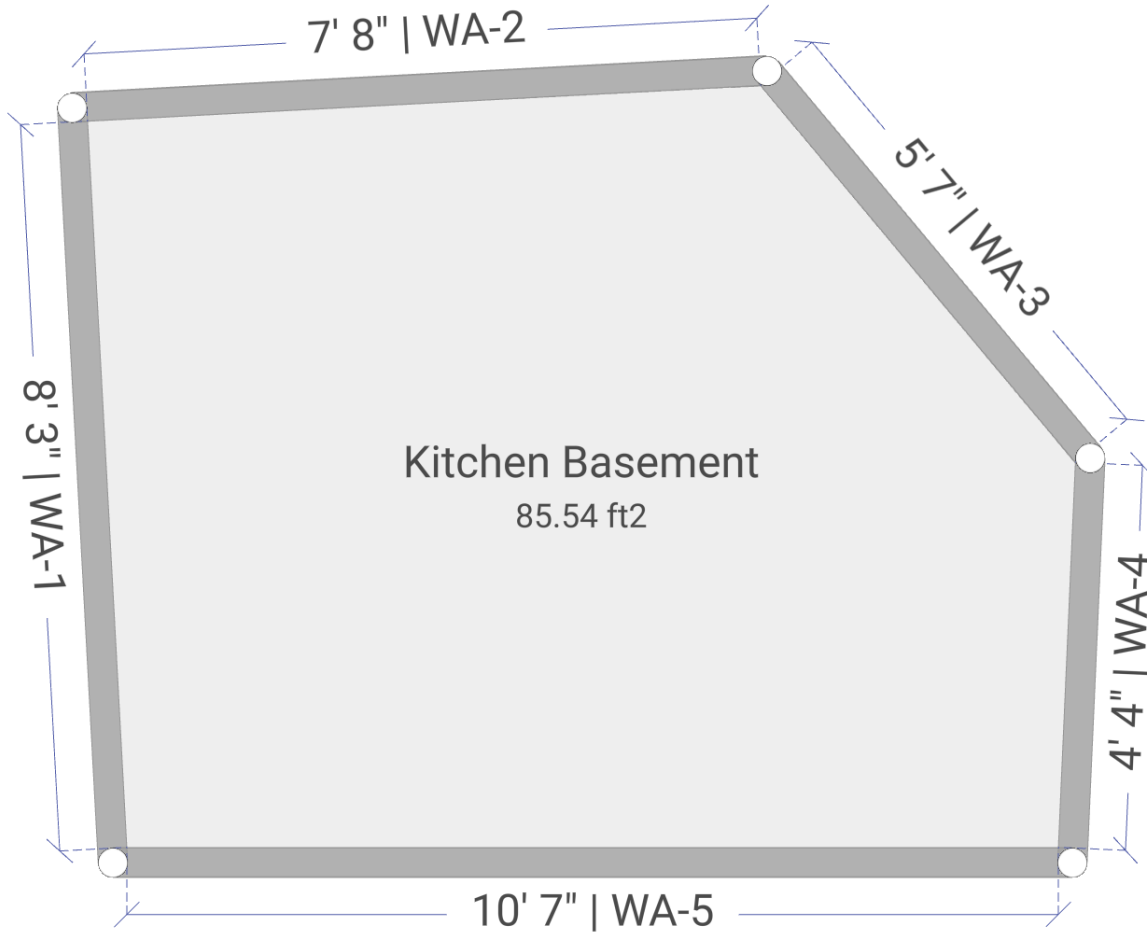
DESCRIPTION NOTES	Basement living room
---------------------	----------------------

Ceiling Specs | Type: Undefined

CEIL. PERIMETER	63' 10 1/2"	CEIL. PERIMETER - SUBTRACTIONS	63' 10 1/2"
CEIL. AREA	226.69 SF 25.19 SY	CEIL. AREA - SUBTRACTIONS	226.69 SF 25.19 SY

Walls

TAG	HEIGHT	WIDTH	AREA	AREA - SUBTRACTIONS
WA-2	8' 6 15/16"	22' 1 3/4"	189.94 SF 21.10 SY	189.94 SF 21.10 SY
WA-1	8' 6 15/16"	9' 5 3/8"	81.04 SF 9.00 SY	81.04 SF 9.00 SY
WA-5	8' 6 15/16"	14' 15/16"	120.75 SF 13.42 SY	120.75 SF 13.42 SY
WA-4	8' 6 15/16"	4' 7 9/16"	39.71 SF 4.41 SY	39.71 SF 4.41 SY
WA-3	8' 6 15/16"	10' 9 1/16"	92.24 SF 10.25 SY	92.24 SF 10.25 SY
TOTALS		61' 5/8"	523.68 SF 58.19 SY	523.68 SF 58.19 SY

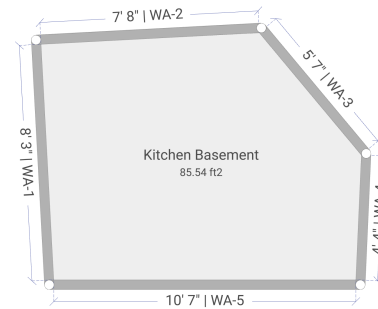


R15 - Kitchen Basement | Interior

2025.03.11 @ 4:20:28 PM (GMT-06:00) America/Chicago

Summary

LEVEL	Basement / Lower Lvl 1
FLOOR	85.54 SF 9.50 SY
FLOOR PERIMETER	36' 5 3/16"
FLOOR PERIMETER - SUBTRACTIONS	36' 5 3/16"
WALLS	272.13 SF 30.24 SY
WALLS & CEILING	357.67 SF 39.74 SY
VOLUME	638.95 CF 23.66 CY
NOTES	Kitchen Basement



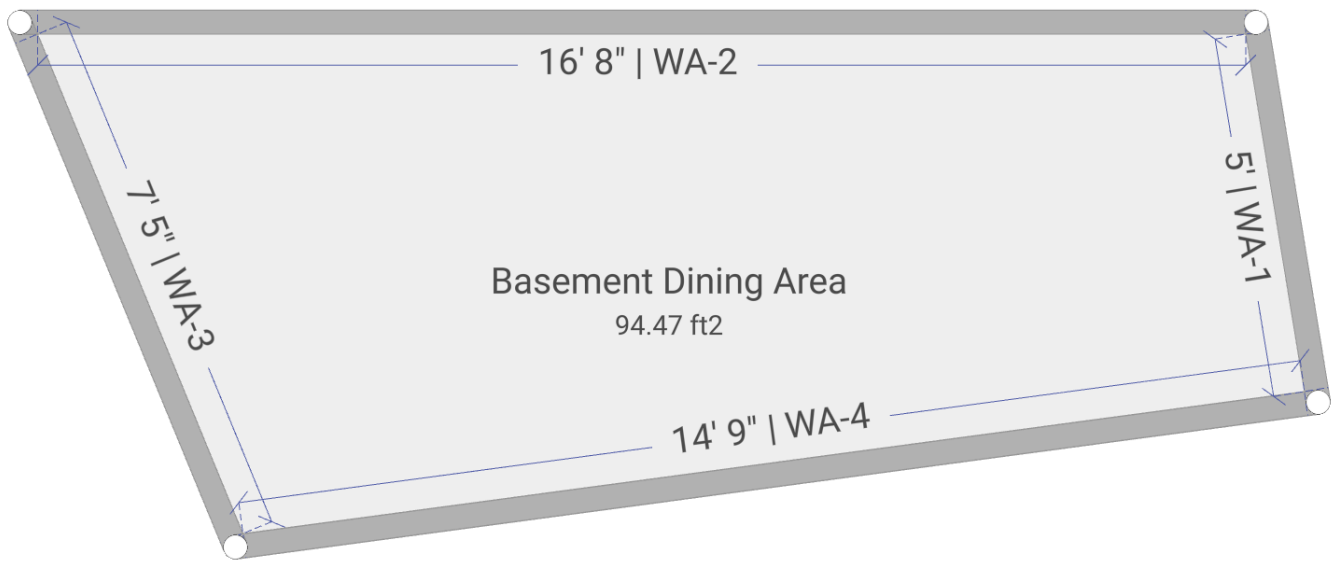
DESCRIPTION NOTES	Kitchen Basement
---------------------	------------------

Ceiling Specs | Type: Undefined

CEIL. PERIMETER	36' 5 3/16"	CEIL. PERIMETER - SUBTRACTIONS	36' 5 3/16"
CEIL. AREA	85.54 SF 9.50 SY	CEIL. AREA - SUBTRACTIONS	85.54 SF 9.50 SY

Walls

TAG	HEIGHT	WIDTH	AREA	AREA - SUBTRACTIONS
WA-1	7' 5 5/8"	8' 3 1/16"	61.68 SF 6.85 SY	61.68 SF 6.85 SY
WA-2	7' 5 5/8"	7' 7 3/4"	57.13 SF 6.35 SY	57.13 SF 6.35 SY
WA-3	7' 5 5/8"	5' 6 15/16"	41.66 SF 4.63 SY	41.66 SF 4.63 SY
WA-4	7' 5 5/8"	4' 4 1/2"	32.68 SF 3.63 SY	32.68 SF 3.63 SY
WA-5	7' 5 5/8"	10' 6 7/8"	78.99 SF 8.78 SY	78.99 SF 8.78 SY
TOTALS		36' 5 3/16"	272.13 SF 30.24 SY	272.13 SF 30.24 SY



R16 - Basement Dining Area | Interior

2025.03.11 @ 4:21:22 PM (GMT-06:00) America/Chicago

Summary

LEVEL	Basement / Lower Lvl 1
FLOOR	94.47 SF 10.50 SY
FLOOR PERIMETER	43' 11 1/16"
FLOOR PERIMETER - SUBTRACTIONS	43' 11 1/16"
WALLS	222.92 SF 24.77 SY
WALLS & CEILING	332.49 SF 36.94 SY
VOLUME	479.46 CF 17.76 CY
NOTES	Basement Dining Area



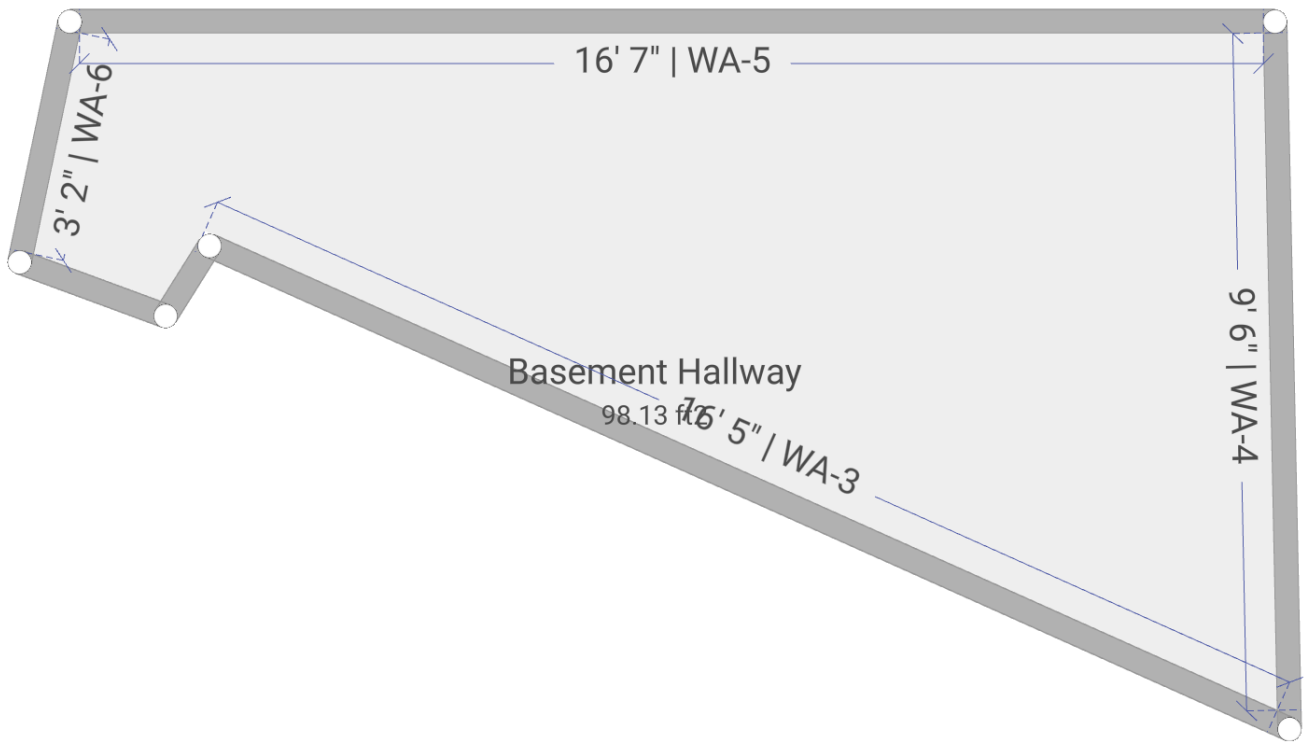
DESCRIPTION NOTES	Basement Dining Area
---------------------	----------------------

Ceiling Specs | Type: Undefined

CEIL. PERIMETER	46' 8 3/16"	CEIL. PERIMETER - SUBTRACTIONS	46' 8 3/16"
CEIL. AREA	109.57 SF 12.17 SY	CEIL. AREA - SUBTRACTIONS	109.57 SF 12.17 SY

Walls

TAG	HEIGHT	WIDTH	AREA	AREA - SUBTRACTIONS
WA-4	5' 7/8"	14' 9 7/16"	75.05 SF 8.34 SY	75.05 SF 8.34 SY
WA-3	5' 7/8"	7' 5 7/16"	37.84 SF 4.20 SY	37.84 SF 4.20 SY
WA-2	5' 7/8"	16' 8 3/16"	84.66 SF 9.41 SY	84.66 SF 9.41 SY
WA-1	5' 7/8"	5'	25.38 SF 2.82 SY	25.38 SF 2.82 SY
TOTALS		43' 11 1/16"	222.92 SF 24.77 SY	222.92 SF 24.77 SY

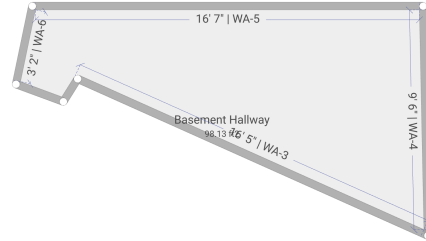


R17 - Basement Hallway | Interior

2025.03.11 @ 4:22:50 PM (GMT-06:00) America/Chicago

Summary

LEVEL	Basement / Lower Lvl 1
FLOOR	98.13 SF 10.90 SY
FLOOR PERIMETER	48' 8 15/16"
FLOOR PERIMETER - SUBTRACTIONS	48' 8 15/16"
WALLS	332.81 SF 36.98 SY
WALLS & CEILING	447.65 SF 49.74 SY
VOLUME	670.03 CF 24.82 CY
NOTES	Basement hallway



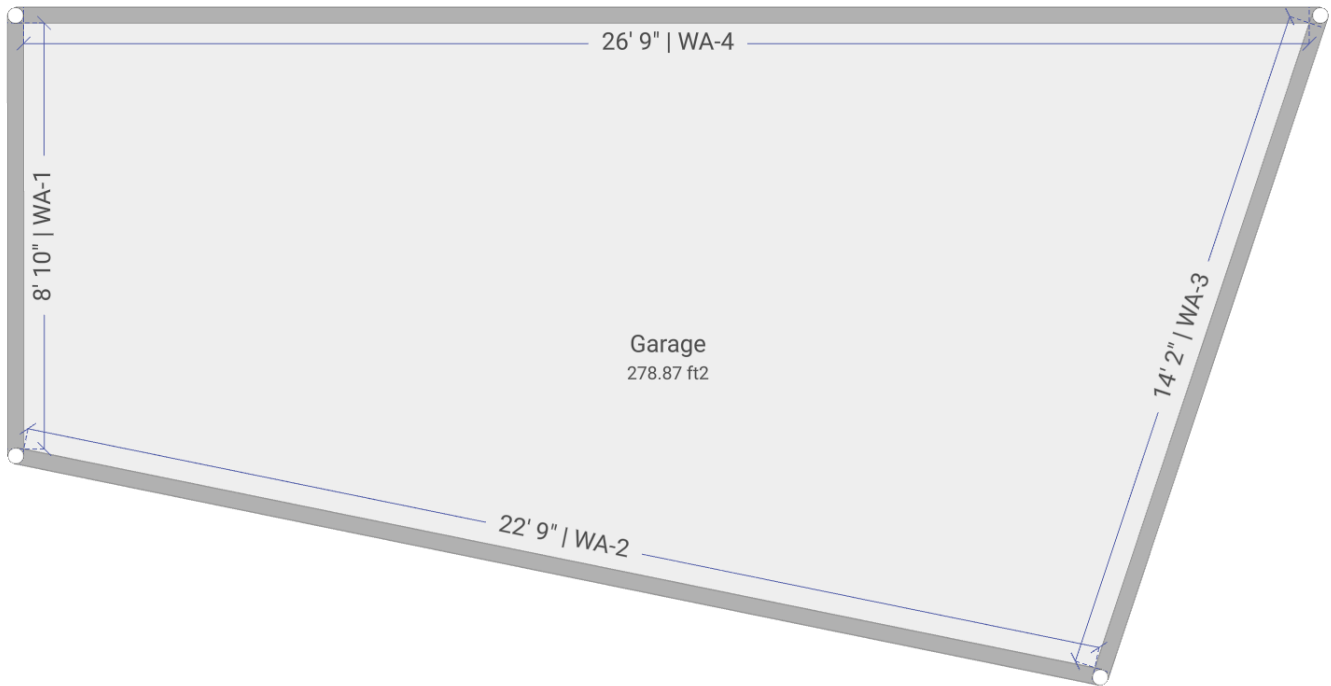
DESCRIPTION NOTES	Basement hallway
---------------------	------------------

Ceiling Specs | Type: Undefined

CEIL. PERIMETER	51' 6 5/16"	CEIL. PERIMETER - SUBTRACTIONS	51' 6 5/16"
CEIL. AREA	114.85 SF 12.76 SY	CEIL. AREA - SUBTRACTIONS	114.85 SF 12.76 SY

Walls

TAG	HEIGHT	WIDTH	AREA	AREA - SUBTRACTIONS
WA-5	6' 9 15/16"	16' 6 15/16"	113.17 SF 12.57 SY	113.17 SF 12.57 SY
WA-4	6' 9 15/16"	9' 5 13/16"	64.76 SF 7.20 SY	64.76 SF 7.20 SY
WA-3	6' 9 15/16"	16' 5 3/8"	112.31 SF 12.48 SY	112.31 SF 12.48 SY
WA-2	6' 9 15/16"	1' 2 1/16"	7.99 SF 0.89 SY	7.99 SF 0.89 SY
WA-1	6' 9 15/16"	1' 10 13/16"	12.97 SF 1.44 SY	12.97 SF 1.44 SY
WA-6	6' 9 15/16"	3' 2"	21.60 SF 2.40 SY	21.60 SF 2.40 SY
TOTALS		48' 8 15/16"	332.81 SF 36.98 SY	332.81 SF 36.98 SY

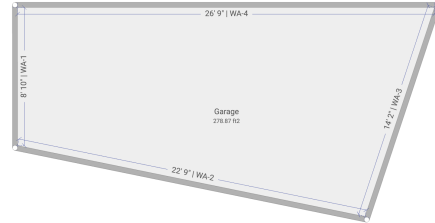


R18 - Garage | Interior

2025.03.11 @ 4:24:03 PM (GMT-06:00) America/Chicago

Summary

LEVEL	Ground / 1st Floor
FLOOR	278.87 SF 30.99 SY
FLOOR PERIMETER	72' 7 1/16"
FLOOR PERIMETER - SUBTRACTIONS	72' 7 1/16"
WALLS	616.84 SF 68.54 SY
WALLS & CEILING	920.37 SF 102.26 SY
VOLUME	2369.78 CF 87.77 CY
NOTES	Garage



DESCRIPTION NOTES	Garage
---------------------	--------

Ceiling Specs | Type: Undefined

CEIL. PERIMETER	75' 3 13/16"	CEIL. PERIMETER - SUBTRACTIONS	75' 3 13/16"
CEIL. AREA	303.52 SF 33.72 SY	CEIL. AREA - SUBTRACTIONS	303.52 SF 33.72 SY

Walls

TAG	HEIGHT	WIDTH	AREA	AREA - SUBTRACTIONS
WA-3	8' 6"	14' 1 7/8"	120.28 SF 13.36 SY	120.28 SF 13.36 SY
WA-2	8' 6"	22' 9 5/16"	193.54 SF 21.50 SY	193.54 SF 21.50 SY
WA-1	8' 6"	8' 10 1/2"	75.40 SF 8.38 SY	75.40 SF 8.38 SY
WA-4	8' 6"	26' 9 7/16"	227.63 SF 25.29 SY	227.63 SF 25.29 SY
TOTALS		72' 7 1/16"	616.84 SF 68.54 SY	616.84 SF 68.54 SY