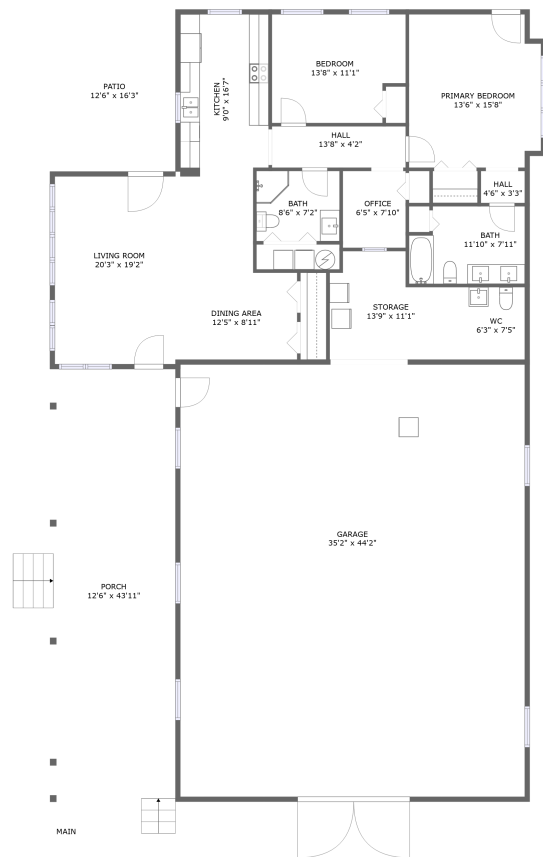




Home report


135 Holyfield Lane, North Shore, Moneta, Franklin County,
Virginia, United States, 24121





Property summary


 **1** Garages


 **2** Bedrooms

 **2** Bathrooms

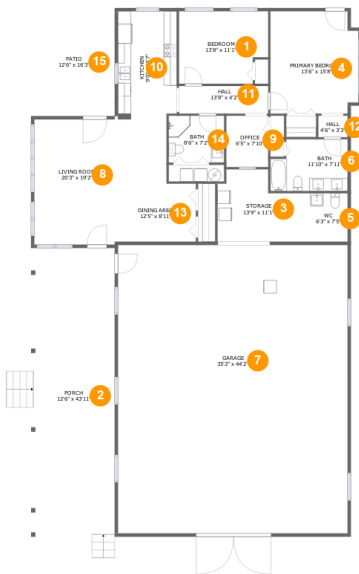
 **1** Half baths

 **1** Floors

 **1,406** Gross living area sqft

 **3,962** Total sqft

135 Holyfield Lane, North Shore, Moneta, Franklin County,
Virginia, United States, 24121



Room dimensions

Floor 1 Total sqft: 3962 Living area: 1406

#		Max Dimensions	sqft	Included
1	Bedroom	13'8" x 11'1"	142 sq. ft	Yes
2	Porch	12'6" x 43'11"	548 sq. ft	No
3	Storage	13'9" x 11'1"	127 sq. ft	No
4	Primary Bedroom	13'6" x 15'8"	204 sq. ft	Yes
5	WC	6'3" x 7'5"	46 sq. ft	No
6	Bath	11'10" x 7'11"	87 sq. ft	Yes
7	Garage	35'2" x 44'2"	1555 sq. ft	No
8	Living Room	20'3" x 19'2"	315 sq. ft	Yes
9	Office	6'5" x 7'10"	51 sq. ft	Yes
10	Kitchen	9'0" x 16'7"	146 sq. ft	Yes
11	Hall	13'8" x 4'2"	58 sq. ft	Yes

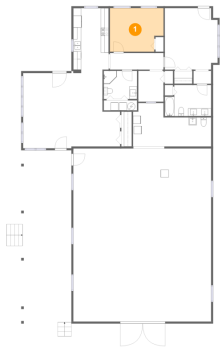
Home report

135 Holyfield Lane, North Shore, Moneta, Franklin County,
Virginia, United States, 24121

#		Max Dimensions	sqft	Included
12	Hall	4'6" x 3'3"	15 sq. ft	Yes
13	Dining Area	12'5" x 8'11"	111 sq. ft	Yes
14	Bath	8'6" x 7'2"	61 sq. ft	Yes
15	Patio	12'6" x 16'3"	203 sq. ft	No

135 Holyfield Lane, North Shore, Moneta, Franklin County,
Virginia, United States, 24121

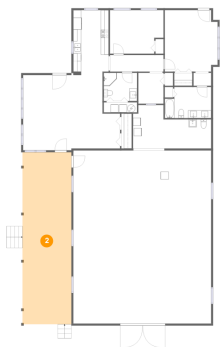
1 Floor 1 - Bedroom



Max Dimensions: 13'8" x 11'1"
Calculated Area: 142 sq. ft
Included: Yes

Heated: Yes
Finished: Yes
Enclosed: Yes
Contiguous: Yes
Permitted: Yes
Wet space: No
Addition: No
Conversion: No

2 Floor 1 - Porch

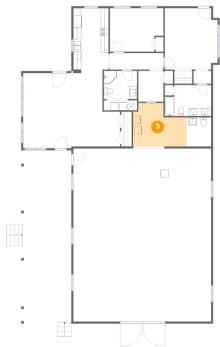


Max Dimensions: 12'6" x 43'11"
Calculated Area: 548 sq. ft
Included: No

Heated: No
Finished: Yes
Enclosed: No
Contiguous: Yes
Permitted: Yes
Wet space: No
Addition: No
Conversion: No

135 Holyfield Lane, North Shore, Moneta, Franklin County,
Virginia, United States, 24121

3 Floor 1 - Storage



Max Dimensions: 13'9" x 11'1"
Calculated Area: 127 sq. ft
Included: No

Heated: No
Finished: No
Enclosed: No
Contiguous: Yes
Permitted: Yes
Wet space: No
Addition: No
Conversion: No

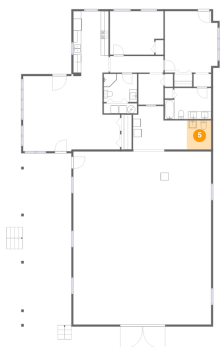
4 Floor 1 - Primary Bedroom



Max Dimensions: 13'6" x 15'8"
Calculated Area: 204 sq. ft
Included: Yes

Heated: Yes
Finished: Yes
Enclosed: Yes
Contiguous: Yes
Permitted: Yes
Wet space: No
Addition: No
Conversion: No

5 Floor 1 - WC



Max Dimensions: 6'3" x 7'5"
Calculated Area: 46 sq. ft
Included: No

Heated: Yes
Finished: No
Enclosed: Yes
Contiguous: Yes
Permitted: Yes
Wet space: Yes
Addition: No
Conversion: No

135 Holyfield Lane, North Shore, Moneta, Franklin County,
Virginia, United States, 24121

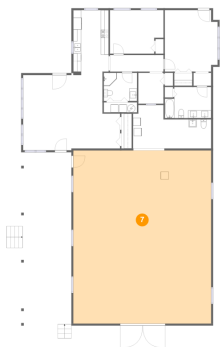
6 Floor 1 - Bath



Max Dimensions: 11'10" x 7'11"
Calculated Area: 87 sq. ft
Included: Yes

Heated: Yes
Finished: Yes
Enclosed: Yes
Contiguous: Yes
Permitted: Yes
Wet space: Yes
Addition: No
Conversion: No

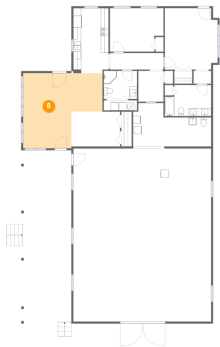
7 Floor 1 - Garage



Max Dimensions: 35'2" x 44'2"
Calculated Area: 1555 sq. ft
Included: No

Heated: No
Finished: No
Enclosed: Yes
Contiguous: Yes
Permitted: Yes
Wet space: No
Addition: No
Conversion: No

8 Floor 1 - Living Room



Max Dimensions: 20'3" x 19'2"
Calculated Area: 315 sq. ft
Included: Yes

Heated: Yes
Finished: Yes
Enclosed: Yes
Contiguous: Yes
Permitted: Yes
Wet space: No
Addition: No
Conversion: No

135 Holyfield Lane, North Shore, Moneta, Franklin County,
Virginia, United States, 24121

9 Floor 1 - Office



Max Dimensions: 6'5" x 7'10"
Calculated Area: 51 sq. ft
Included: Yes

Heated: Yes
Finished: Yes
Enclosed: Yes
Contiguous: Yes
Permitted: Yes
Wet space: No
Addition: No
Conversion: No

10 Floor 1 - Kitchen



Max Dimensions: 9'0" x 16'7"
Calculated Area: 146 sq. ft
Included: Yes

Heated: Yes
Finished: Yes
Enclosed: Yes
Contiguous: Yes
Permitted: Yes
Wet space: No
Addition: No
Conversion: No

11 Floor 1 - Hall

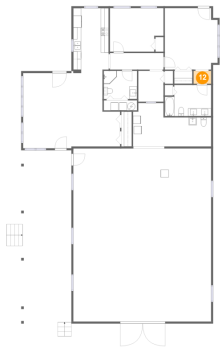


Max Dimensions: 13'8" x 4'2"
Calculated Area: 58 sq. ft
Included: Yes

Heated: Yes
Finished: Yes
Enclosed: Yes
Contiguous: Yes
Permitted: Yes
Wet space: No
Addition: No
Conversion: No

135 Holyfield Lane, North Shore, Moneta, Franklin County,
Virginia, United States, 24121

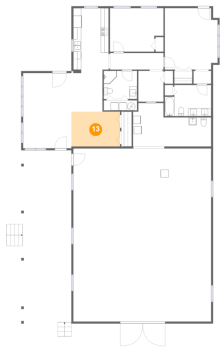
12 Floor 1 - Hall



Max Dimensions: 4'6" x 3'3"
Calculated Area: 15 sq. ft
Included: Yes

Heated: Yes
Finished: Yes
Enclosed: Yes
Contiguous: Yes
Permitted: Yes
Wet space: No
Addition: No
Conversion: No

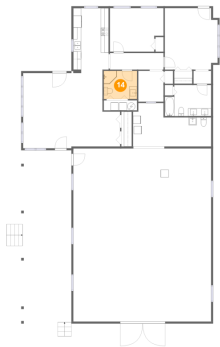
13 Floor 1 - Dining Area



Max Dimensions: 12'5" x 8'11"
Calculated Area: 111 sq. ft
Included: Yes

Heated: Yes
Finished: Yes
Enclosed: Yes
Contiguous: Yes
Permitted: Yes
Wet space: No
Addition: No
Conversion: No

14 Floor 1 - Bath

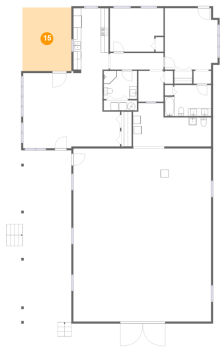


Max Dimensions: 8'6" x 7'2"
Calculated Area: 61 sq. ft
Included: Yes

Heated: Yes
Finished: Yes
Enclosed: Yes
Contiguous: Yes
Permitted: Yes
Wet space: Yes
Addition: No
Conversion: No

135 Holyfield Lane, North Shore, Moneta, Franklin County,
Virginia, United States, 24121

15 Floor 1 - Patio



Max Dimensions: 12'6" x 16'3"
Calculated Area: 203 sq. ft
Included: No

Heated: No
Finished: Yes
Enclosed: No
Contiguous: Yes
Permitted: Yes
Wet space: No
Addition: No
Conversion: No