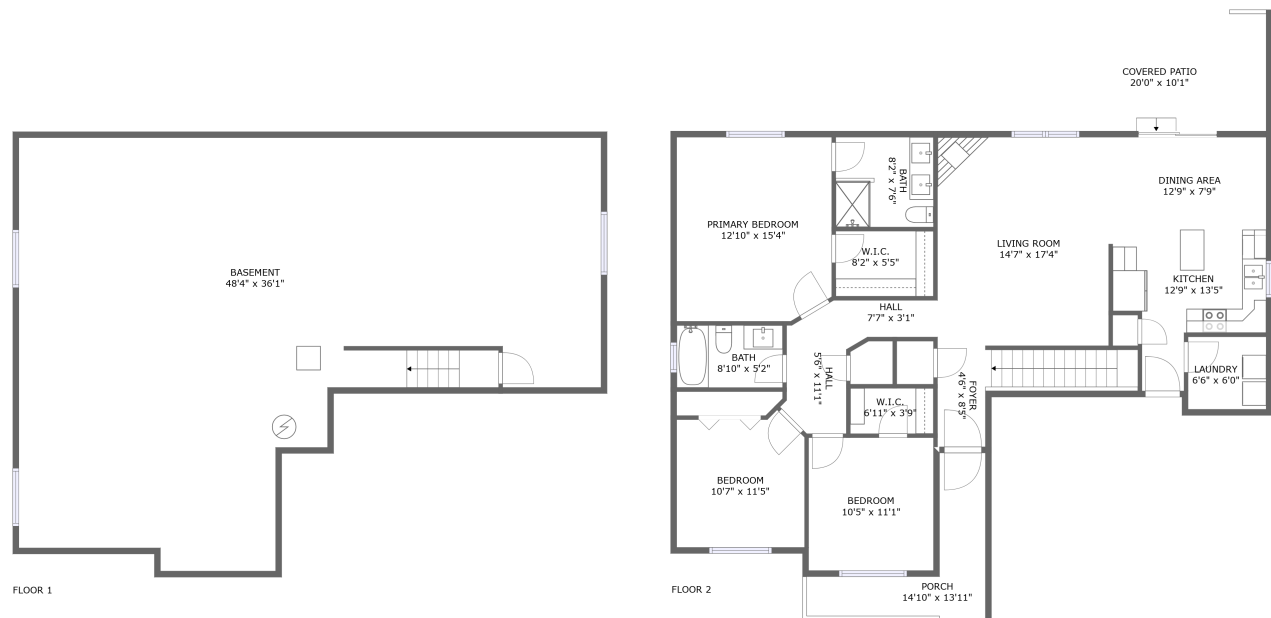



Home report


4213 W 30th Street Rd,Greeley,CO,US




Property summary




0
Garages



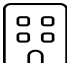
3
Bedrooms




2
Bathrooms




0
Half baths



2
Floors



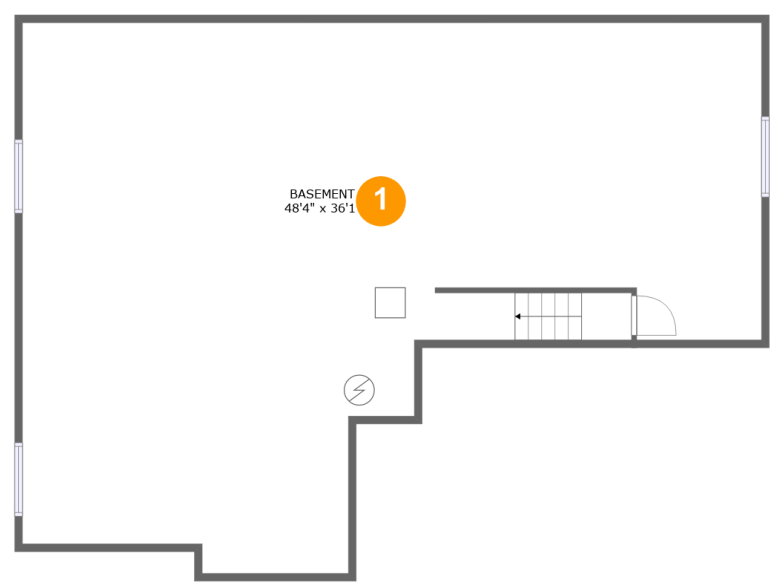
1,462
Gross living
area sqft



3,140
Total sqft

Home report

4213 W 30th Street Rd,Greeley,CO,US



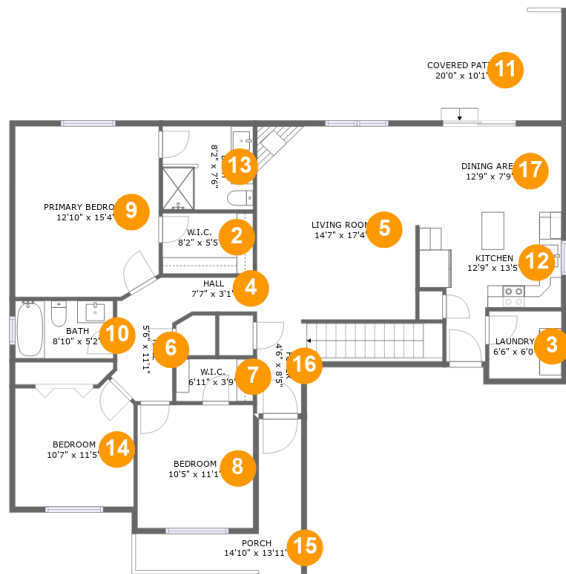
Room dimensions

Floor 1 Total sqft: 1416 Living area: 0

#		Dimensions	sqft	Counted as living area
1	Basement	48'4" x 36'1"	1325 sq. ft	No

Home report

4213 W 30th Street Rd,Greeley,CO,US



Room dimensions

Floor 2 Total sqft: 1724 Living area: 1462

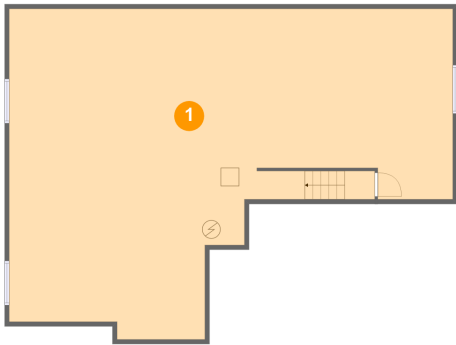
#		Dimensions	sqft	Counted as living area
2	W.I.C.	8'2" x 5'5"	44 sq. ft	Yes
3	Laundry	6'6" x 6'0"	39 sq. ft	Yes
4	Hall	7'7" x 3'1"	24 sq. ft	Yes
5	Living Room	14'7" x 17'4"	250 sq. ft	Yes
6	Hall	5'6" x 11'1"	49 sq. ft	Yes
7	W.I.C.	6'11" x 3'9"	26 sq. ft	Yes
8	Bedroom	10'5" x 11'1"	115 sq. ft	Yes
9	Primary Bedroom	12'10" x 15'4"	194 sq. ft	Yes
10	Bath	8'10" x 5'2"	46 sq. ft	Yes
11	Covered Patio	20'0" x 10'1"	173 sq. ft	No
12	Kitchen	12'9" x 13'5"	123 sq. ft	Yes

Home report

4213 W 30th Street Rd,Greeley,CO,US

#		Dimensions	sqft	Counted as living area
13	Bath	8'2" x 7'6"	61 sq. ft	Yes
14	Bedroom	10'7" x 11'5"	113 sq. ft	Yes
15	Porch	14'10" x 13'11"	89 sq. ft	No
16	Foyer	4'6" x 8'5"	71 sq. ft	Yes
17	Dining Area	12'9" x 7'9"	98 sq. ft	Yes

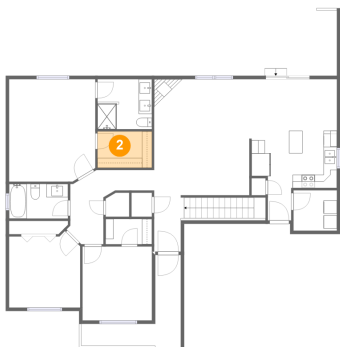
1 Floor 1 - Basement



Dimensions: 48'4" x 36'1"
Area: 1325 sq. ft
Counted as living area: No

Heated: Yes
Finished: No
Enclosed: Yes
Contiguous: Yes
Permitted: Yes
Wet space: No
Addition: No
Conversion: No

2 Floor 2 - W.I.C.



Dimensions: 8'2" x 5'5"
Area: 44 sq. ft
Counted as living area: Yes

Heated: Yes
Finished: Yes
Enclosed: Yes
Contiguous: Yes
Permitted: Yes
Wet space: No
Addition: No
Conversion: No

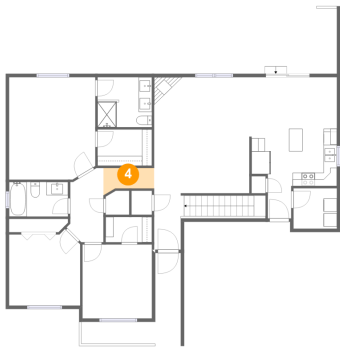
3 Floor 2 - Laundry



Dimensions: 6'6" x 6'0"
Area: 39 sq. ft
Counted as living area: Yes

Heated: Yes
Finished: Yes
Enclosed: Yes
Contiguous: Yes
Permitted: Yes
Wet space: No
Addition: No
Conversion: No

4 Floor 2 - Hall



Dimensions: 7'7" x 3'1"
Area: 24 sq. ft
Counted as living area: Yes

Heated: Yes
Finished: Yes
Enclosed: Yes
Contiguous: Yes
Permitted: Yes
Wet space: No
Addition: No
Conversion: No

5 Floor 2 - Living Room



Dimensions: 14'7" x 17'4"
Area: 250 sq. ft
Counted as living area: Yes

Heated: Yes
Finished: Yes
Enclosed: Yes
Contiguous: Yes
Permitted: Yes
Wet space: No
Addition: No
Conversion: No

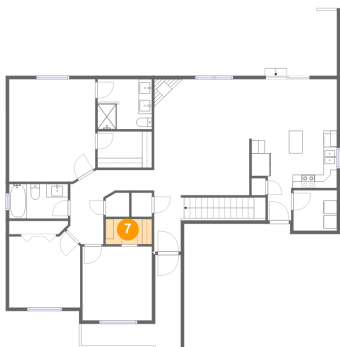
6 Floor 2 - Hall



Dimensions: 5'6" x 11'1"
Area: 49 sq. ft
Counted as living area: Yes

Heated: Yes
Finished: Yes
Enclosed: Yes
Contiguous: Yes
Permitted: Yes
Wet space: No
Addition: No
Conversion: No

7 Floor 2 - W.I.C.



Dimensions: 6'11" x 3'9"
Area: 26 sq. ft
Counted as living area: Yes

Heated: Yes
Finished: Yes
Enclosed: Yes
Contiguous: Yes
Permitted: Yes
Wet space: No
Addition: No
Conversion: No

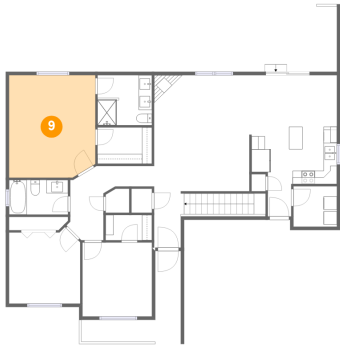
8 Floor 2 - Bedroom



Dimensions: 10'5" x 11'1"
Area: 115 sq. ft
Counted as living area: Yes

Heated: Yes
Finished: Yes
Enclosed: Yes
Contiguous: Yes
Permitted: Yes
Wet space: No
Addition: No
Conversion: No

9 Floor 2 - Primary Bedroom



Dimensions: 12'10" x 15'4"
Area: 194 sq. ft
Counted as living area: Yes

Heated: Yes
Finished: Yes
Enclosed: Yes
Contiguous: Yes
Permitted: Yes
Wet space: No
Addition: No
Conversion: No

10 Floor 2 - Bath



Dimensions: 8'10" x 5'2"
Area: 46 sq. ft
Counted as living area: Yes

Heated: Yes
Finished: Yes
Enclosed: Yes
Contiguous: Yes
Permitted: Yes
Wet space: Yes
Addition: No
Conversion: No

11 Floor 2 - Covered Patio



Dimensions: 20'0" x 10'1"
Area: 173 sq. ft
Counted as living area: No

Heated: No
Finished: Yes
Enclosed: No
Contiguous: Yes
Permitted: Yes
Wet space: No
Addition: No
Conversion: No

12 Floor 2 - Kitchen



Dimensions: 12'9" x 13'5"
Area: 123 sq. ft
Counted as living area: Yes

Heated: Yes
Finished: Yes
Enclosed: Yes
Contiguous: Yes
Permitted: Yes
Wet space: No
Addition: No
Conversion: No

13 Floor 2 - Bath



Dimensions: 8'2" x 7'6"
Area: 61 sq. ft
Counted as living area: Yes

Heated: Yes
Finished: Yes
Enclosed: Yes
Contiguous: Yes
Permitted: Yes
Wet space: Yes
Addition: No
Conversion: No

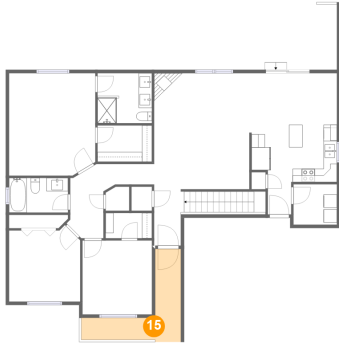
14 Floor 2 - Bedroom



Dimensions: 10'7" x 11'5"
Area: 113 sq. ft
Counted as living area: Yes

Heated: Yes
Finished: Yes
Enclosed: Yes
Contiguous: Yes
Permitted: Yes
Wet space: No
Addition: No
Conversion: No

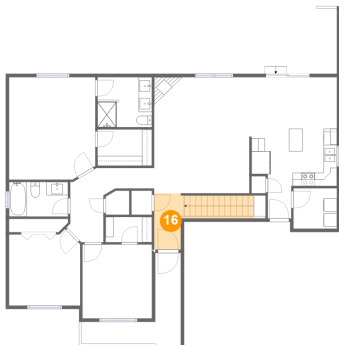
15 Floor 2 - Porch



Dimensions: 14'10" x 13'11"
Area: 89 sq. ft
Counted as living area: No

Heated: No
Finished: Yes
Enclosed: No
Contiguous: Yes
Permitted: Yes
Wet space: No
Addition: No
Conversion: No

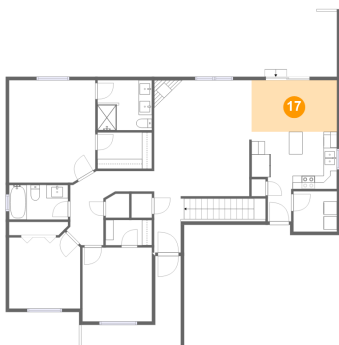
16 Floor 2 - Foyer



Dimensions: 4'6" x 8'5"
Area: 71 sq. ft
Counted as living area: Yes

Heated: Yes
Finished: Yes
Enclosed: Yes
Contiguous: Yes
Permitted: Yes
Wet space: No
Addition: No
Conversion: No

17 Floor 2 - Dining Area



Dimensions: 12'9" x 7'9"
Area: 98 sq. ft
Counted as living area: Yes

Heated: Yes
Finished: Yes
Enclosed: Yes
Contiguous: Yes
Permitted: Yes
Wet space: No
Addition: No
Conversion: No