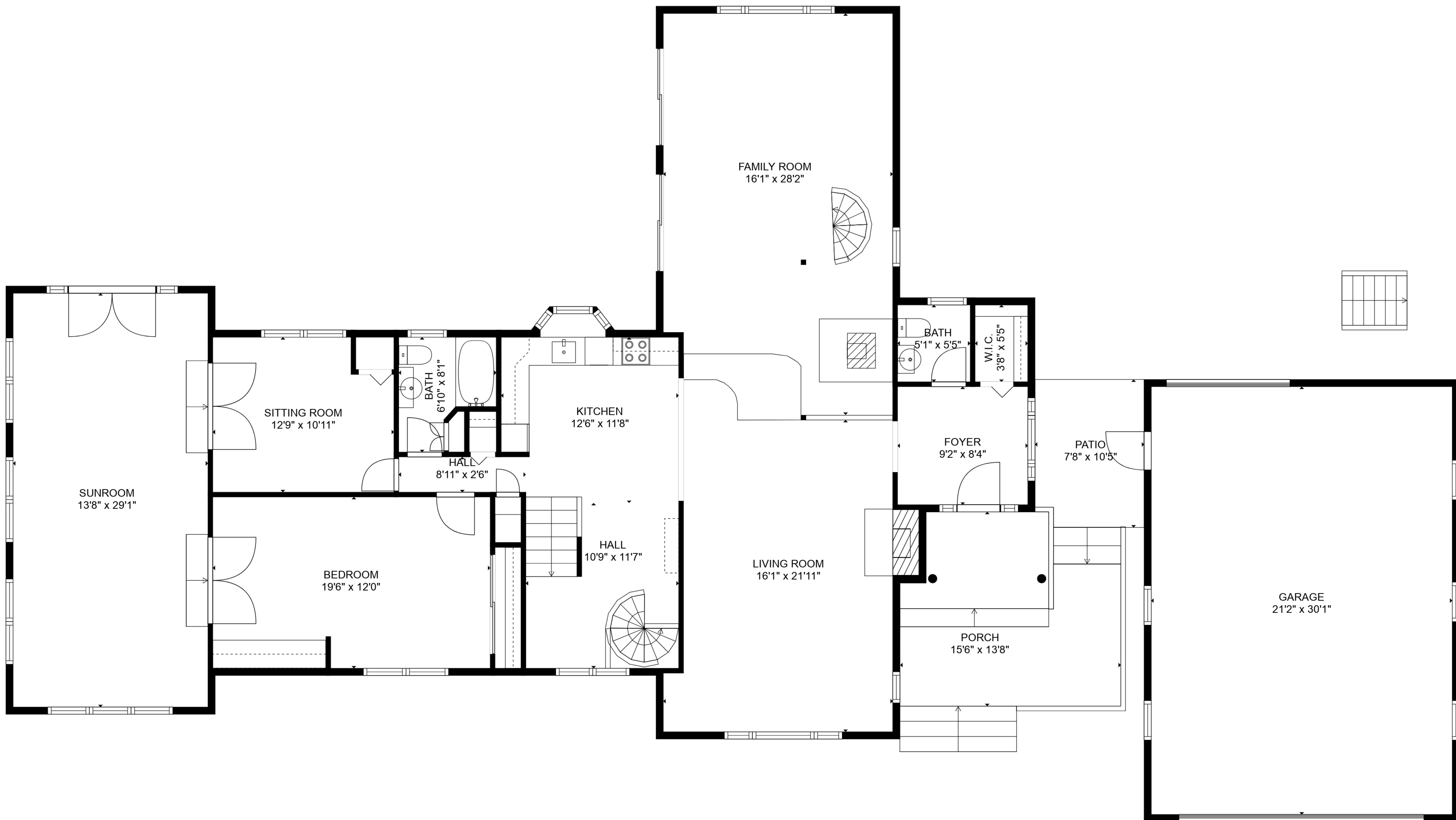


TOTAL: 4805 sq. ft

BELOW GROUND: 1292 sq. ft, FLOOR 2: 2096 sq. ft, FLOOR 3: 1417 sq. ft
EXCLUDED AREAS: ELECTRICAL ROOM: 153 sq. ft, PATIO: 78 sq. ft, PORCH: 183 sq. ft,
GARAGE: 635 sq. ft, BAY WINDOW: 8 sq. ft, LOW CEILING: 230 sq. ft,
ATTIC: 307 sq. ft, OPEN TO BELOW: 679 sq. ft, BALCONY: 12 sq. ft

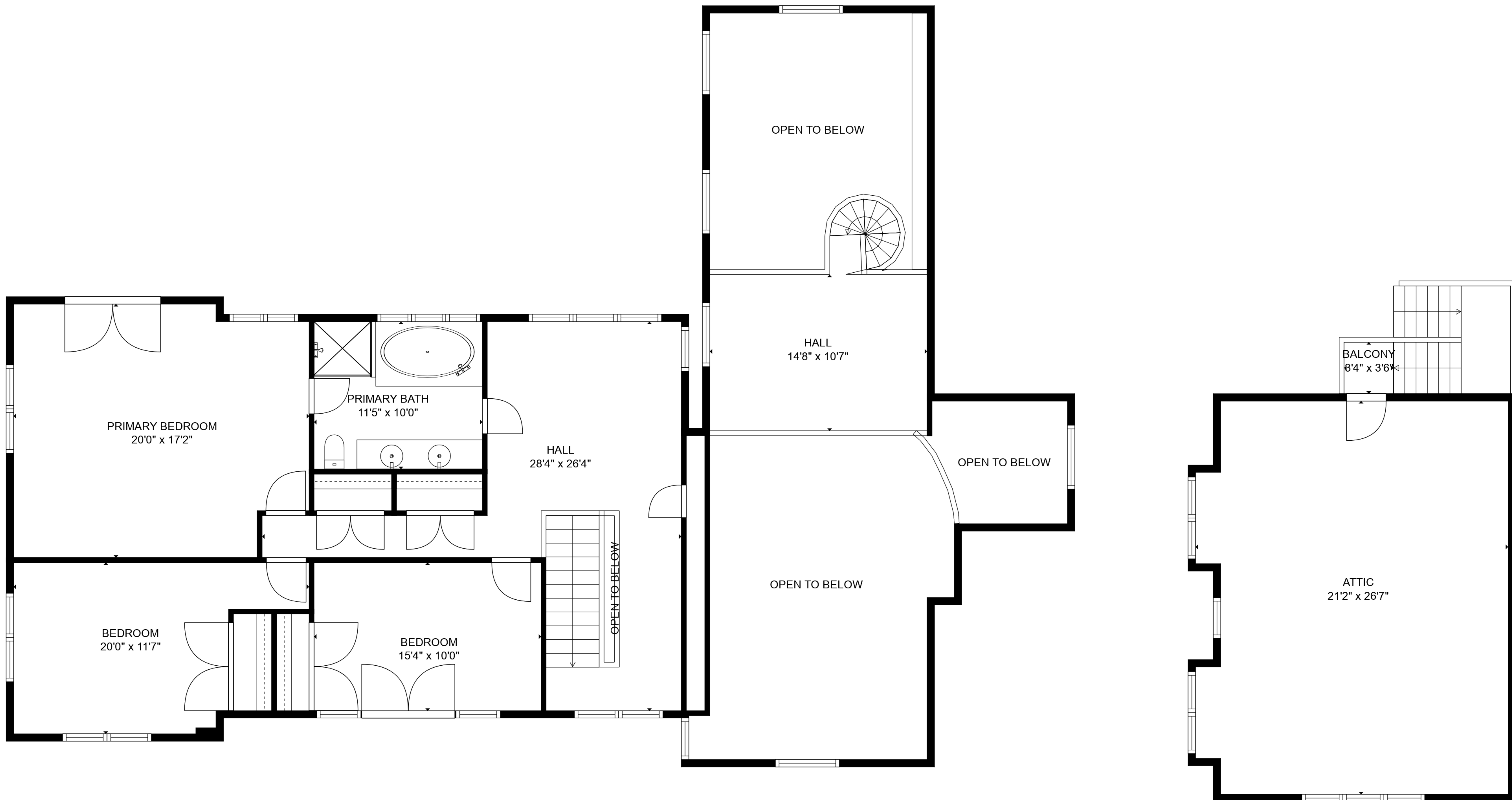


TOTAL: 4805 sq. ft

BELOW GROUND: 1292 sq. ft, FLOOR 2: 2096 sq. ft, FLOOR 3: 1417 sq. ft
 EXCLUDED AREAS: ELECTRICAL ROOM: 153 sq. ft, PATIO: 78 sq. ft, PORCH: 183 sq. ft,
 GARAGE: 635 sq. ft, BAY WINDOW: 8 sq. ft, LOW CEILING: 230 sq. ft,
 ATTIC: 307 sq. ft, OPEN TO BELOW: 679 sq. ft, BALCONY: 12 sq. ft



Floor Plans are provided by HouseSnappers.com. Measurements are deemed highly reliable but not guaranteed.

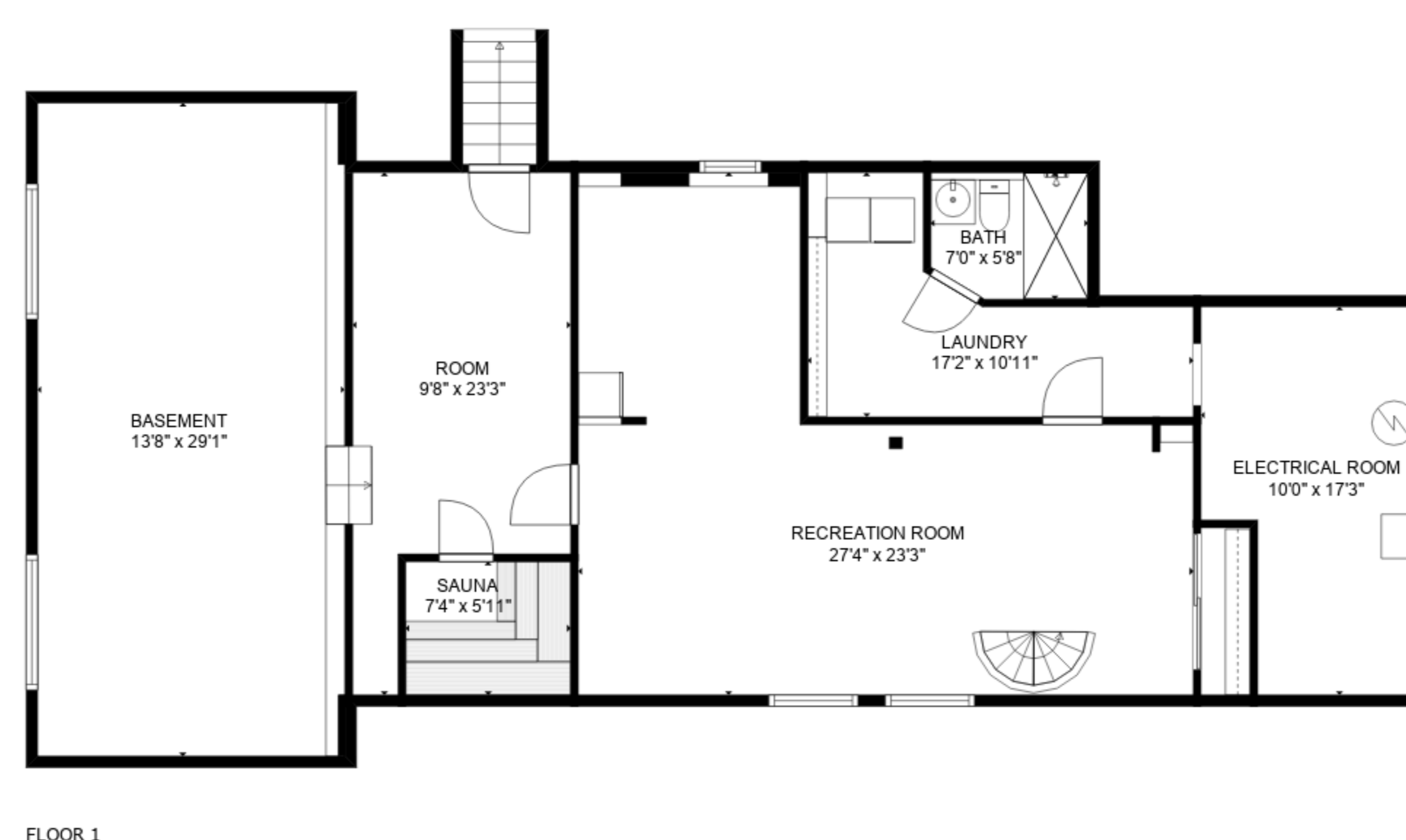
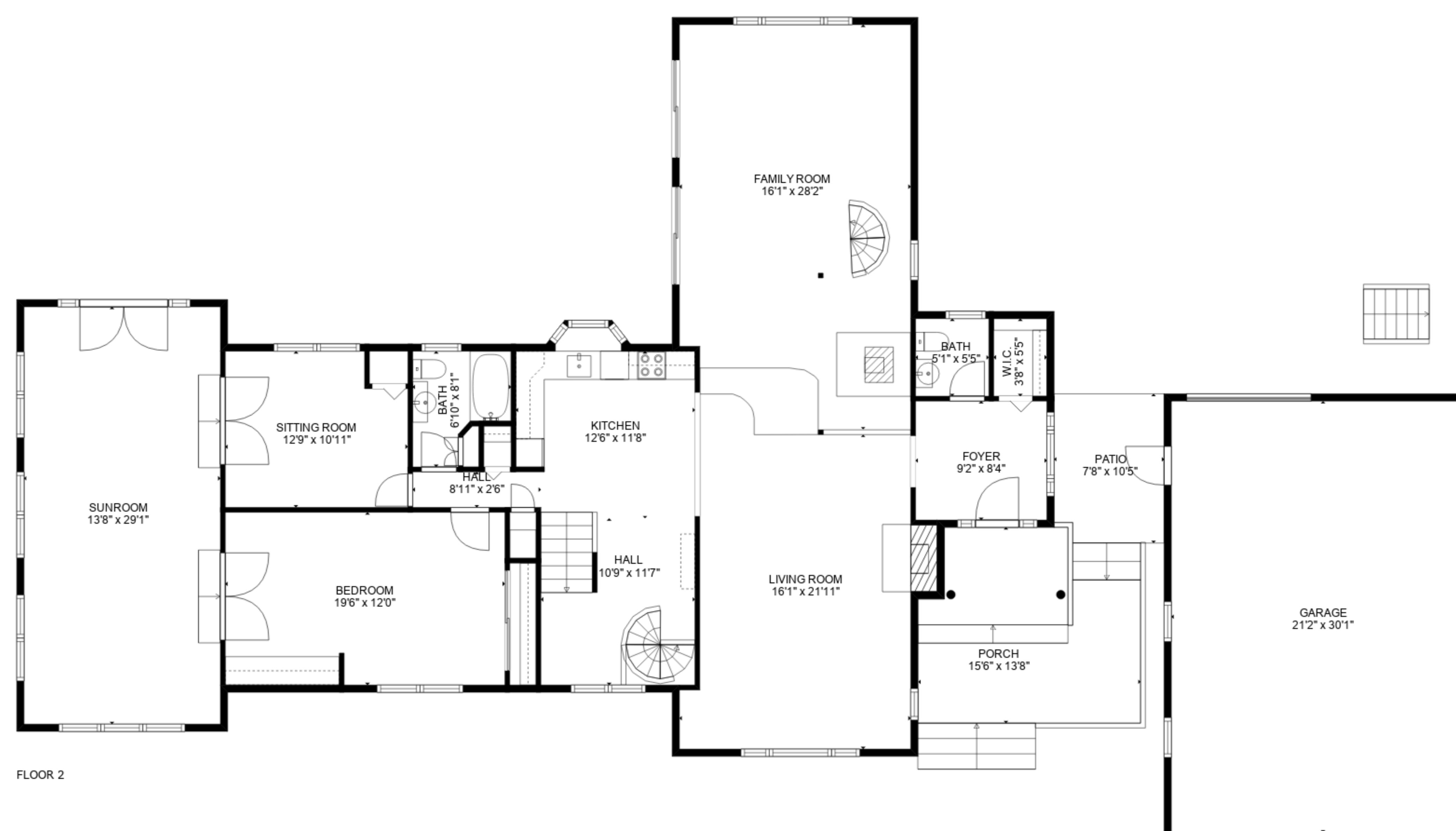
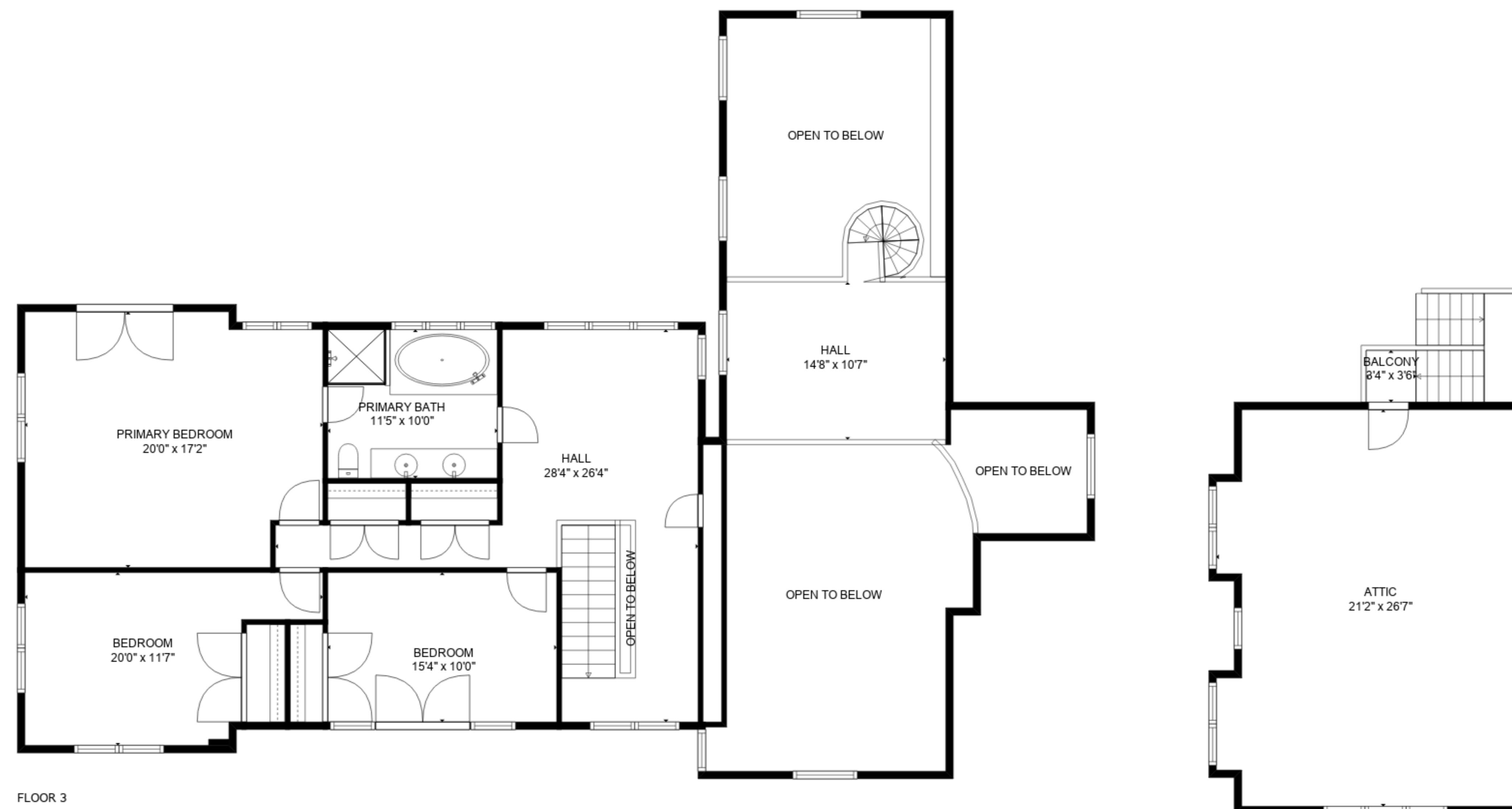


TOTAL: 4805 sq. ft

BELOW GROUND: 1292 sq. ft, FLOOR 2: 2096 sq. ft, FLOOR 3: 1417 sq. ft
 EXCLUDED AREAS: ELECTRICAL ROOM: 153 sq. ft, PATIO: 78 sq. ft, PORCH: 183 sq. ft,
 GARAGE: 635 sq. ft, BAY WINDOW: 8 sq. ft, LOW CEILING: 230 sq. ft,
 ATTIC: 307 sq. ft, OPEN TO BELOW: 679 sq. ft, BALCONY: 12 sq. ft



Floor Plans are provided by HouseSnappers.com. Measurements are deemed highly reliable but not guaranteed.



TOTAL: 4805 sq. ft

BELOW GROUND: 1292 sq. ft, FLOOR 2: 2096 sq. ft, FLOOR 3: 1417 sq. ft
 EXCLUDED AREAS: ELECTRICAL ROOM: 153 sq. ft, PATIO: 78 sq. ft, PORCH: 183 sq. ft,
 GARAGE: 635 sq. ft, BAY WINDOW: 8 sq. ft, LOW CEILING: 230 sq. ft,
 ATTIC: 307 sq. ft, OPEN TO BELOW: 679 sq. ft, BALCONY: 12 sq. ft