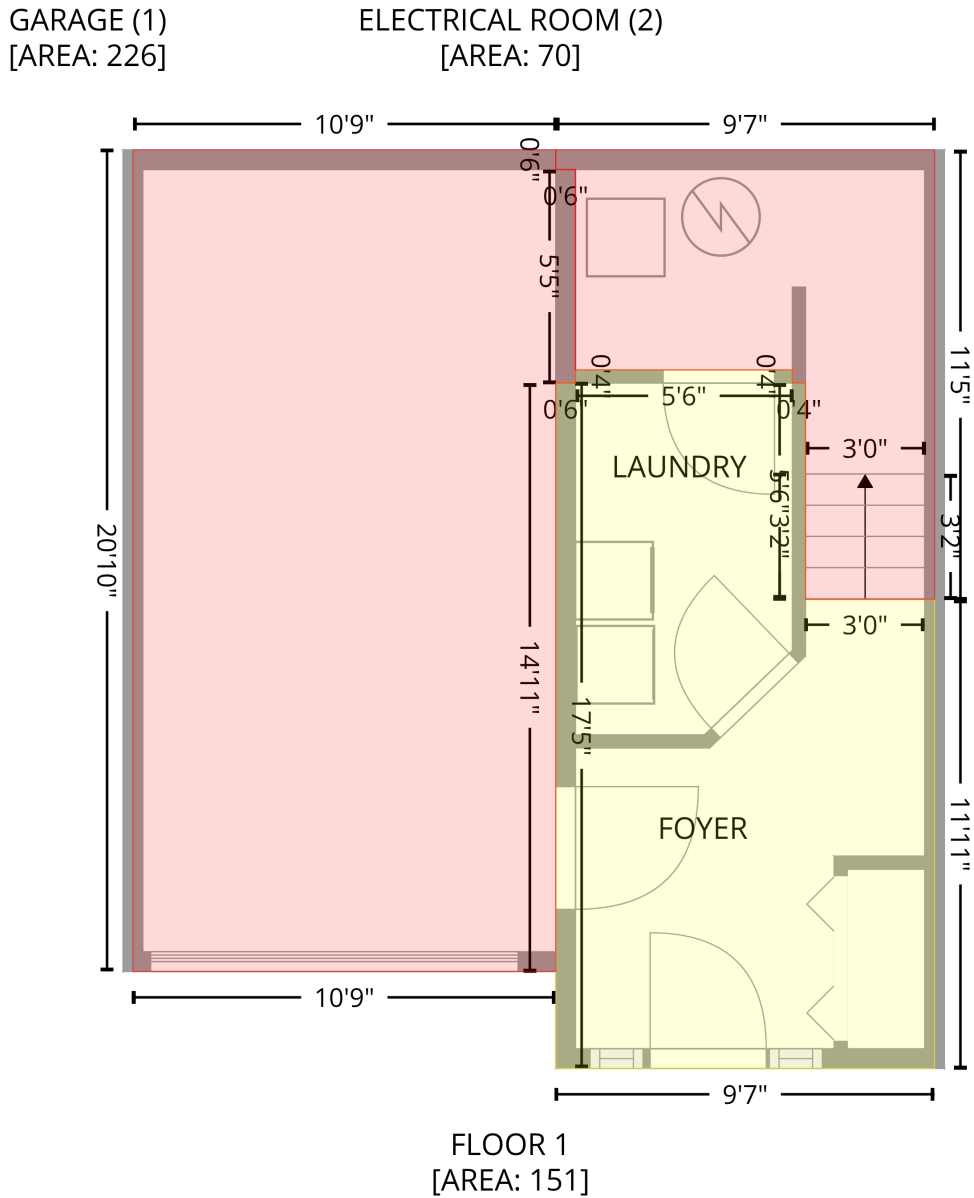


150 Langlois Way, Stonebridge, Saskatoon, Saskatchewan, Canada, S7T 0K8, 553

Gross Living Area: 894 sq. ft

Level 1 - Below Grade



Space	Area (sq. ft)	Calculation
FLOOR 1 (Living area)	151	Coordinate Polygon Area Algorithm using inches $-((282.6 + 282.6) * (140.2 - 144.2) + (282.6 + 286.6) * (144.2 - 144.2) + (286.6 + 286.6) * (144.2 - 210.1) + (286.6 + 325.8) * (210.1 - 210.1) + (325.8 + 325.8) * (210.1 - 352.9) + (325.8 + 210.6) * (352.9 - 352.9) + (210.6 + 210.6) * (352.9 - 144.2) + (210.6 + 216.6) * (144.2 - 144.2) + (216.6 + 216.6) * (144.2 - 140.2) + (216.6 + 282.6) * (140.2 - 140.2)) * 0.5 * 0.00694$
GARAGE (Non-living area)	226	$-((210.6 + 210.6) * (73.2 - 79.2) + (210.6 + 216.6) * (79.2 - 79.2) + (216.6 + 216.6) * (79.2 - 144.2) + (216.6 + 210.6) * (144.2 - 144.2) + (210.6 + 210.6) * (144.2 - 323.4) + (210.6 + 82) * (323.4 - 323.4) + (82 + 82) * (323.4 - 73.2) + (82 + 210.6) * (73.2 - 73.2)) * 0.5 * 0.00694$

150 Langlois Way, Stonebridge, Saskatoon, Saskatchewan, Canada, S7T 0K8, 553

Gross Living Area: 894 sq. ft

Level 1 - Below Grade

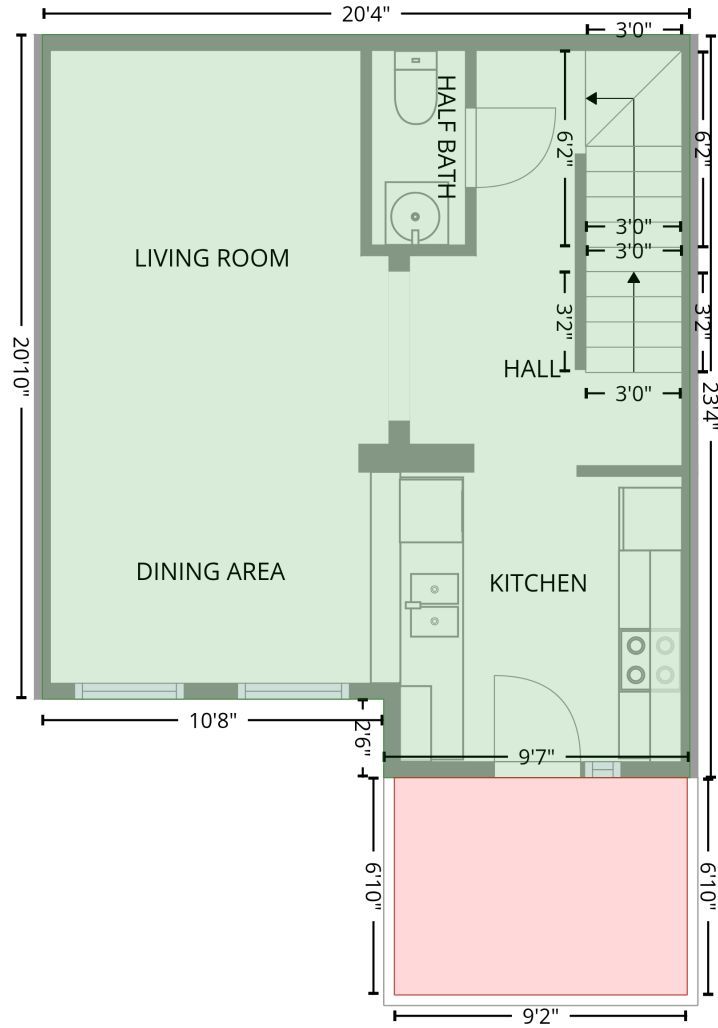
Space	Area (sq. ft)	Calculation <small>Coordinate Polygon Area Algorithm using inches</small>
ELECTRICAL ROOM (Non-living area)	70	$-\left((325.8 + 325.8) * (73.2 - 210.1) + (325.8 + 286.6) * (210.1 - 210.1) + (286.6 + 286.6) * (210.1 - 144.2) + (286.6 + 282.6) * (144.2 - 144.2) + (282.6 + 282.6) * (144.2 - 140.2) + (282.6 + 216.6) * (140.2 - 140.2) + (216.6 + 216.6) * (140.2 - 79.2) + (216.6 + 210.6) * (79.2 - 79.2) + (210.6 + 210.6) * (79.2 - 73.2) + (210.6 + 325.8) * (73.2 - 73.2)\right) * 0.5 * 0.00694$

150 Langlois Way, Stonebridge, Saskatoon, Saskatchewan, Canada, S7T 0K8, 553

Gross Living Area: 894 sq. ft

Level 2

FLOOR 2
[AREA: 447]



BALCONY (1)
[AREA: 63]

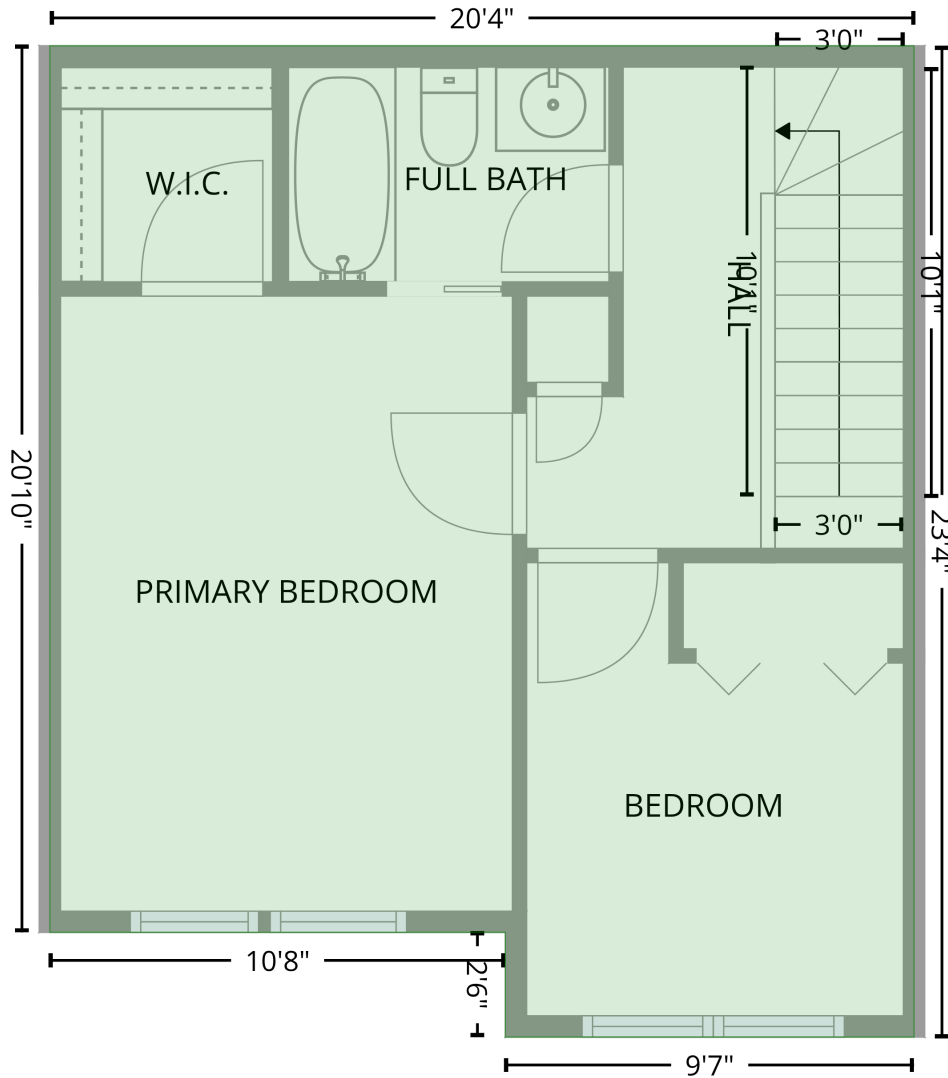
Space	Area (sq. ft)	Calculation <small>Coordinate Polygon Area Algorithm using inches</small>
FLOOR 2 (Living area)	447	$-((325.8 + 325.8) * (73.2 - 352.9) + (325.8 + 210.5) * (352.9 - 352.9) + (210.5 + 210.5) * (352.9 - 323.4) + (210.5 + 82) * (323.4 - 323.4) + (82 + 82) * (323.4 - 73.2) + (82 + 325.8) * (73.2 - 73.2)) * 0.5 * 0.00694$
BALCONY (Non-living area)	63	$-((324.8 + 324.8) * (352.9 - 434.7) + (324.8 + 214.6) * (434.7 - 434.7) + (214.6 + 214.6) * (434.7 - 352.9) + (214.6 + 324.8) * (352.9 - 352.9)) * 0.5 * 0.00694$

150 Langlois Way, Stonebridge, Saskatoon, Saskatchewan, Canada, S7T 0K8, 553

Gross Living Area: 894 sq. ft

Level 3

FLOOR 3
[AREA: 447]



Space	Area (sq. ft)	Calculation <small>Coordinate Polygon Area Algorithm using inches</small>
FLOOR 3 (Living area)	447	$-\left((325.8 + 325.8) * (73.2 - 352.9) + (325.8 + 210.5) * (352.9 - 352.9) + (210.5 + 210.5) * (352.9 - 323.4) + (210.5 + 82) * (323.4 - 323.4) + (82 + 82) * (323.4 - 73.2) + (82 + 325.8) * (73.2 - 73.2)\right) * 0.5 * 0.00694$