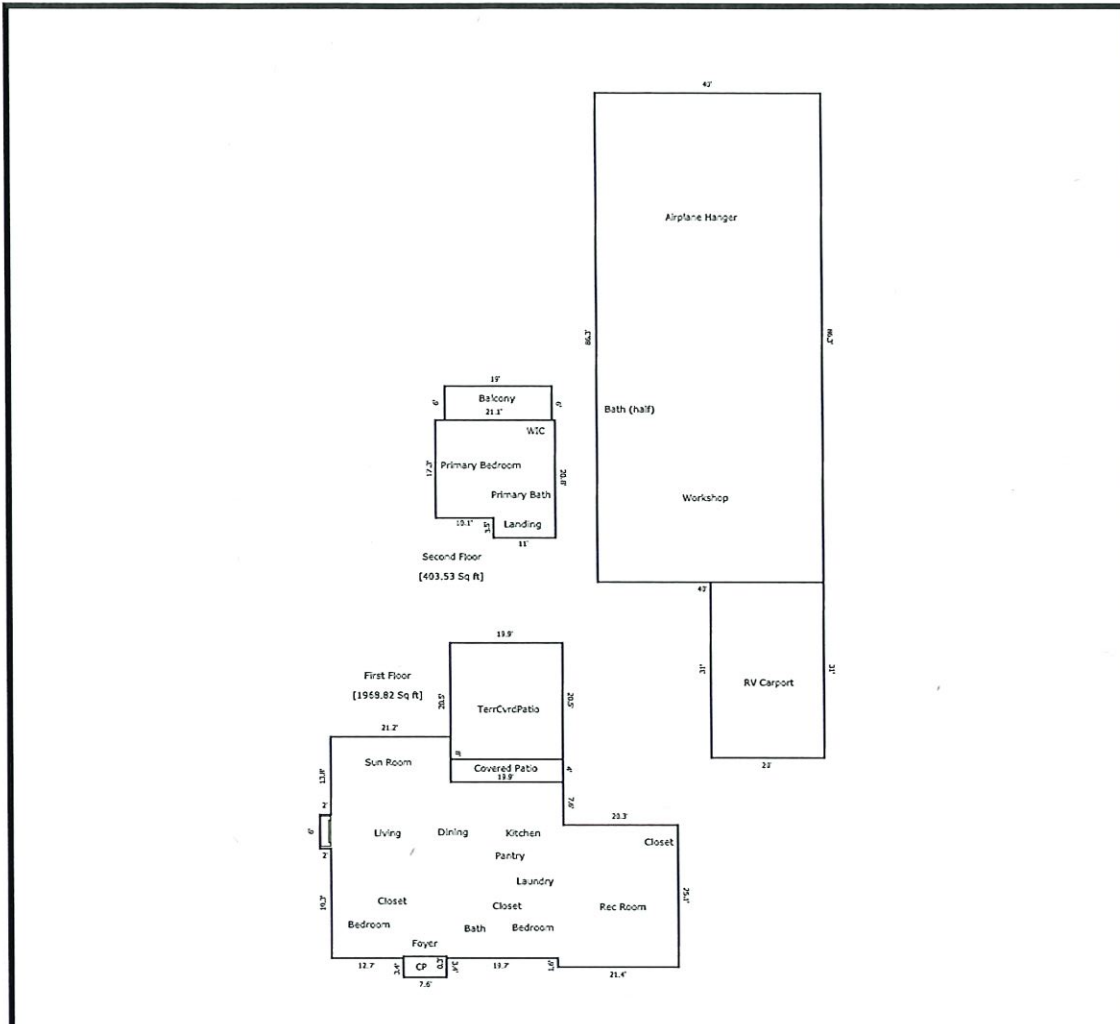


## Building Sketch

Borrower				
Property Address	15807 Lakeview Dr			
City	Beach City	County	Chambers	State TX Zip Code 77523
Lender/Client	Brandy Hadley			



TOTAL Sketch by a la mode

### Area Calculations Summary

Living Area	Area	Calculation Details
First Floor	1968.82 Sq ft	$6 \times 2 = 12$ $25.1 \times 20.3 = 509.53$ $1.1 \times 1.6 = 1.76$ $31.1 \times 19.9 = 618.89$ $21.2 \times 38.8 = 822.56$ $0.3 \times 12.7 = 3.81$ $0.3 \times 0.9 = 0.27$
Second Floor	403.53 Sq ft	$21.1 \times 17.3 = 365.03$ $3.5 \times 11 = 38.5$
<b>Total Living Area (Rounded):</b>	<b>2372 Sq ft</b>	
<b>Non-living Area</b>		
Balcony	114 Sq ft	$19 \times 6 = 114$
Covered Patio	79.6 Sq ft	$19.9 \times 4 = 79.6$
Covered Porch	28.12 Sq ft	$7.6 \times 3.7 = 28.12$
RV Carport	620 Sq ft	$31 \times 20 = 620$
Hanger/Workshop	3452 Sq ft	$40 \times 86.3 = 3452$
Terrace Covered Patio	407.95 Sq ft	$19.9 \times 20.5 = 407.95$