

# 3704 London Circle, Cave Spring, Roanoke, Roanoke County, Virginia, United States, 24018

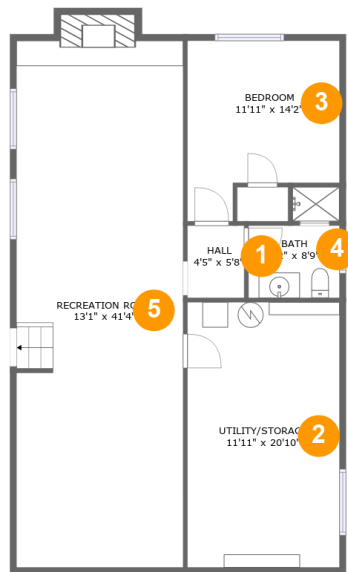


## Property Summary

**1** garages    **4** bedrooms    **1** bathrooms    **2** half baths

**3** floors    **2,335** Gross Living Area sqft    **3,109** total sqft

# 3704 London Circle, Cave Spring, Roanoke, Roanoke County, Virginia, United States, 24018



## Room Dimensions

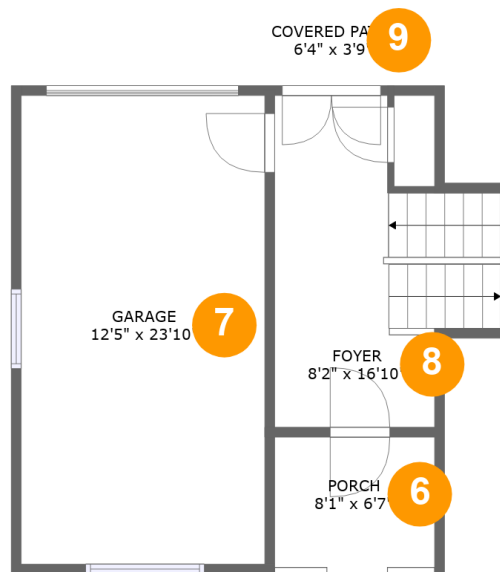
Floor 1

Total sqft: 1129

Living area: 1115

#	Room name	Dimensions	Area (sqft)	Counted as Living Area
1	Hall	4'5" x 5'8"	25 sq. ft	Yes
2	UTILITY/STORAGE	11'11" x 20'10"	248 sq. ft	Yes
3	Bedroom	11'11" x 14'2"	144 sq. ft	Yes
4	Bath	7'2" x 8'9"	41 sq. ft	Yes
5	Recreation Room	13'1" x 41'4"	552 sq. ft	Yes

# 3704 London Circle, Cave Spring, Roanoke, Roanoke County, Virginia, United States, 24018

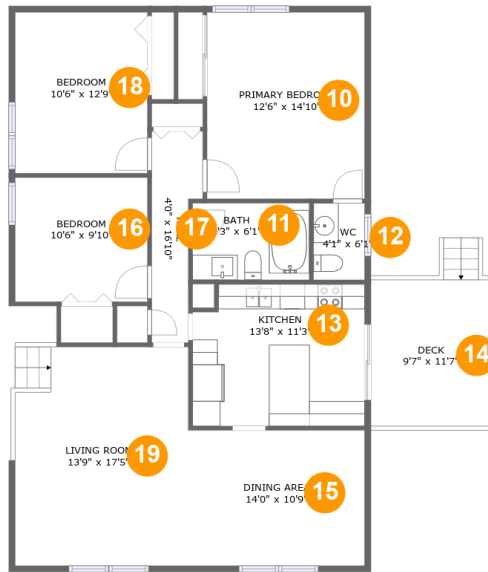


## Room Dimensions

**Floor 2****Total sqft: 591****Living area: 0**

#	Room name	Dimensions	Area (sqft)	Counted as Living Area
6	Porch	8'1" x 6'7"	54 sq. ft	No
7	Garage	12'5" x 23'10"	295 sq. ft	No
8	Foyer	8'2" x 16'10"	148 sq. ft	No
9	Covered Patio	6'4" x 3'9"	24 sq. ft	No

# 3704 London Circle, Cave Spring, Roanoke, Roanoke County, Virginia, United States, 24018



## Room Dimensions

Floor 3

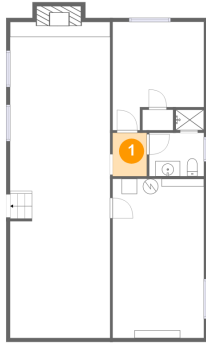
Total sqft: 1389

Living area: 1220

#	Room name	Dimensions	Area (sqft)	Counted as Living Area
10	Primary Bedroom	12'6" x 14'10"	186 sq. ft	Yes
11	Bath	9'3" x 6'1"	57 sq. ft	No
12	Wc	4'1" x 6'1"	25 sq. ft	Yes
13	Kitchen	13'8" x 11'3"	150 sq. ft	Yes
14	Deck	9'7" x 11'7"	112 sq. ft	No
15	Dining Area	14'0" x 10'9"	151 sq. ft	Yes
16	Bedroom	10'6" x 9'10"	104 sq. ft	Yes
17	Hall	4'0" x 16'10"	55 sq. ft	Yes
18	Bedroom	10'6" x 12'9"	135 sq. ft	Yes
19	Living Room	13'9" x 17'5"	239 sq. ft	Yes

# 3704 London Circle, Cave Spring, Roanoke, Roanoke County, Virginia, United States, 24018

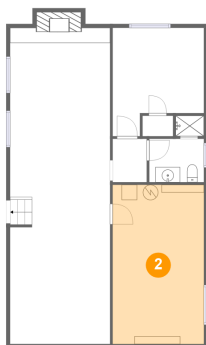
## 1 Floor 1 - Hall



Dimensions: 4'5" x 5'8"  
Area: 25 sq. ft  
Counted as Living Area:  
Yes

Heated: Yes  
Finished: Yes  
Enclosed: Yes  
Contiguous:  
Yes  
Permitted: Yes  
Wet Space: No  
Addition: No  
Conversion: No

## 2 Floor 1 - UTILITY/STORAGE

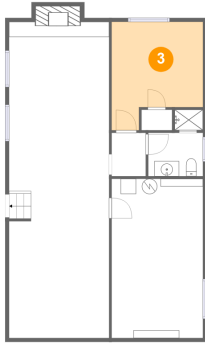


Dimensions: 11'11" x 20'10"  
Area: 248 sq. ft  
Counted as Living Area:  
Yes

Heated: Yes  
Finished: Yes  
Enclosed: Yes  
Contiguous:  
Yes  
Permitted: Yes  
Wet Space: No  
Addition: No  
Conversion: No

# 3704 London Circle, Cave Spring, Roanoke, Roanoke County, Virginia, United States, 24018

## 3 Floor 1 - Bedroom



Dimensions: 11'11" x 14'2"  
Area: 144 sq. ft  
Counted as Living Area:  
Yes

Heated: Yes  
Finished: Yes  
Enclosed: Yes  
Contiguous:  
Yes  
Permitted: Yes  
Wet Space: No  
Addition: No  
Conversion: No

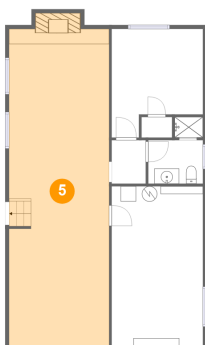
## 4 Floor 1 - Bath



Dimensions: 7'2" x 8'9"  
Area: 41 sq. ft  
Counted as Living Area:  
Yes

Heated: Yes  
Finished: Yes  
Enclosed: Yes  
Contiguous:  
Yes  
Permitted: Yes  
Wet Space: Yes  
Addition: No  
Conversion: No

## 5 Floor 1 - Recreation Room



Dimensions: 13'1" x 41'4"  
Area: 552 sq. ft  
Counted as Living Area:  
Yes

Heated: Yes  
Finished: Yes  
Enclosed: Yes  
Contiguous:  
Yes  
Permitted: Yes  
Wet Space: No  
Addition: No  
Conversion: No

# 3704 London Circle, Cave Spring, Roanoke, Roanoke County, Virginia, United States, 24018

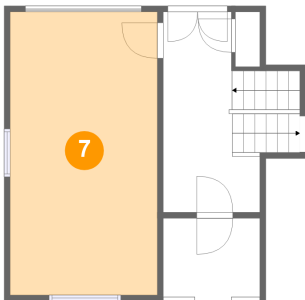
## 6 Floor 2 - Porch



Dimensions: 8'1" x 6'7"  
Area: 54 sq. ft  
Counted as Living Area: No

Heated: No  
Finished: Yes  
Enclosed: No  
Contiguous: Yes  
Permitted: Yes  
Wet Space: No  
Addition: No  
Conversion: No

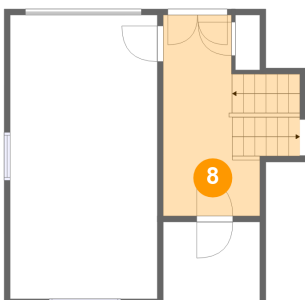
## 7 Floor 2 - Garage



Dimensions: 12'5" x 23'10"  
Area: 295 sq. ft  
Counted as Living Area: No

Heated: No  
Finished: No  
Enclosed: Yes  
Contiguous: Yes  
Permitted: Yes  
Wet Space: No  
Addition: No  
Conversion: No

## 8 Floor 2 - Foyer

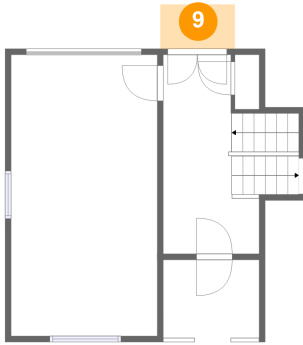


Dimensions: 8'2" x 16'10"  
Area: 148 sq. ft  
Counted as Living Area: No

Heated: Yes  
Finished: Yes  
Enclosed: Yes  
Contiguous: No  
Permitted: Yes  
Wet Space: No  
Addition: No  
Conversion: No

# 3704 London Circle, Cave Spring, Roanoke, Roanoke County, Virginia, United States, 24018

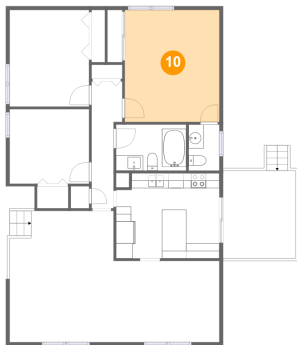
## 9 Floor 2 - Covered Patio



Dimensions: 6'4" x 3'9"  
Area: 24 sq. ft  
Counted as Living Area: No

Heated: No  
Finished: Yes  
Enclosed: No  
Contiguous: Yes  
Permitted: Yes  
Wet Space: No  
Addition: No  
Conversion: No

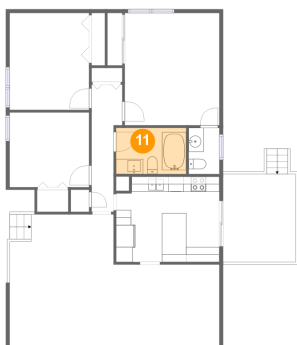
## 10 Floor 3 - Primary Bedroom



Dimensions: 12'6" x 14'10"  
Area: 186 sq. ft  
Counted as Living Area:  
Yes

Heated: Yes  
Finished: Yes  
Enclosed: Yes  
Contiguous:  
Yes  
Permitted: Yes  
Wet Space: No  
Addition: No  
Conversion: No

## 11 Floor 3 - Bath



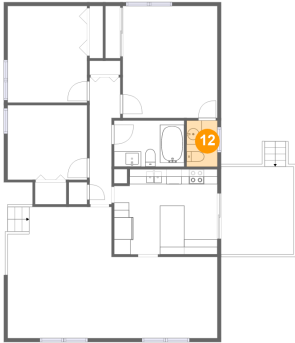
Dimensions: 9'3" x 6'1"  
Area: 57 sq. ft  
Counted as Living Area: No

Heated: Yes  
Finished: Yes  
Enclosed: Yes  
Contiguous: Yes  
Permitted: Yes  
Wet Space: Yes  
Addition: No  
Conversion: No



# 3704 London Circle, Cave Spring, Roanoke, Roanoke County, Virginia, United States, 24018

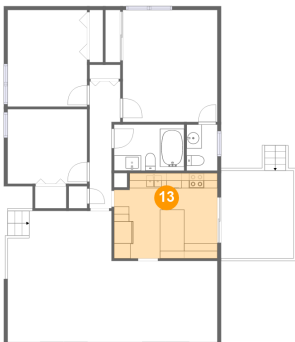
## 12 Floor 3 - Wc



Dimensions: 4'1" x 6'1"  
Area: 25 sq. ft  
Counted as Living Area:  
Yes

Heated: Yes  
Finished: Yes  
Enclosed: Yes  
Contiguous:  
Yes  
Permitted: Yes  
Wet Space: Yes  
Addition: No  
Conversion: No

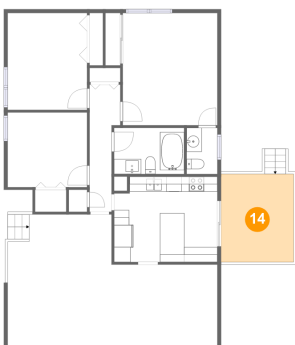
## 13 Floor 3 - Kitchen



Dimensions: 13'8" x 11'3"  
Area: 150 sq. ft  
Counted as Living Area:  
Yes

Heated: Yes  
Finished: Yes  
Enclosed: Yes  
Contiguous:  
Yes  
Permitted: Yes  
Wet Space: No  
Addition: No  
Conversion: No

## 14 Floor 3 - Deck

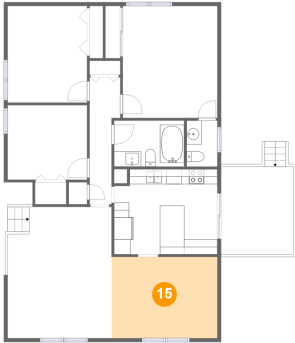


Dimensions: 9'7" x 11'7"  
Area: 112 sq. ft  
Counted as Living Area: No

Heated: No  
Finished: Yes  
Enclosed: No  
Contiguous: Yes  
Permitted: Yes  
Wet Space: No  
Addition: No  
Conversion: No

# 3704 London Circle, Cave Spring, Roanoke, Roanoke County, Virginia, United States, 24018

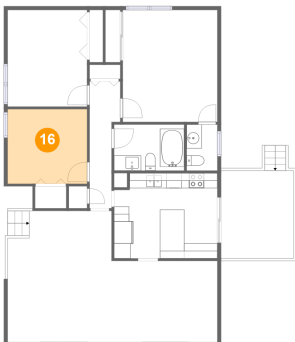
## 15 Floor 3 - Dining Area



Dimensions: 14'0" x 10'9"  
Area: 151 sq. ft  
Counted as Living Area:  
Yes

Heated: Yes  
Finished: Yes  
Enclosed: Yes  
Contiguous:  
Yes  
Permitted: Yes  
Wet Space: No  
Addition: No  
Conversion: No

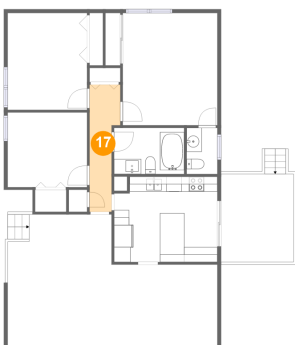
## 16 Floor 3 - Bedroom



Dimensions: 10'6" x 9'10"  
Area: 104 sq. ft  
Counted as Living Area:  
Yes

Heated: Yes  
Finished: Yes  
Enclosed: Yes  
Contiguous:  
Yes  
Permitted: Yes  
Wet Space: No  
Addition: No  
Conversion: No

## 17 Floor 3 - Hall

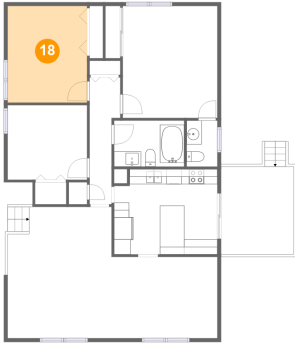


Dimensions: 4'0" x 16'10"  
Area: 55 sq. ft  
Counted as Living Area:  
Yes

Heated: Yes  
Finished: Yes  
Enclosed: Yes  
Contiguous:  
Yes  
Permitted: Yes  
Wet Space: No  
Addition: No  
Conversion: No

# 3704 London Circle, Cave Spring, Roanoke, Roanoke County, Virginia, United States, 24018

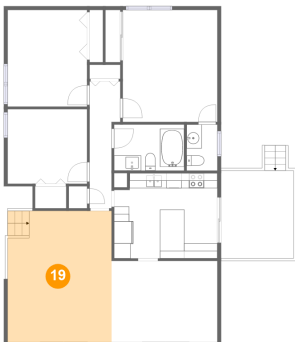
## 18 Floor 3 - Bedroom



Dimensions: 10'6" x 12'9"  
Area: 135 sq. ft  
Counted as Living Area:  
Yes

Heated: Yes  
Finished: Yes  
Enclosed: Yes  
Contiguous:  
Yes  
Permitted: Yes  
Wet Space: No  
Addition: No  
Conversion: No

## 19 Floor 3 - Living Room



Dimensions: 13'9" x 17'5"  
Area: 239 sq. ft  
Counted as Living Area:  
Yes

Heated: Yes  
Finished: Yes  
Enclosed: Yes  
Contiguous:  
Yes  
Permitted: Yes  
Wet Space: No  
Addition: No  
Conversion: No