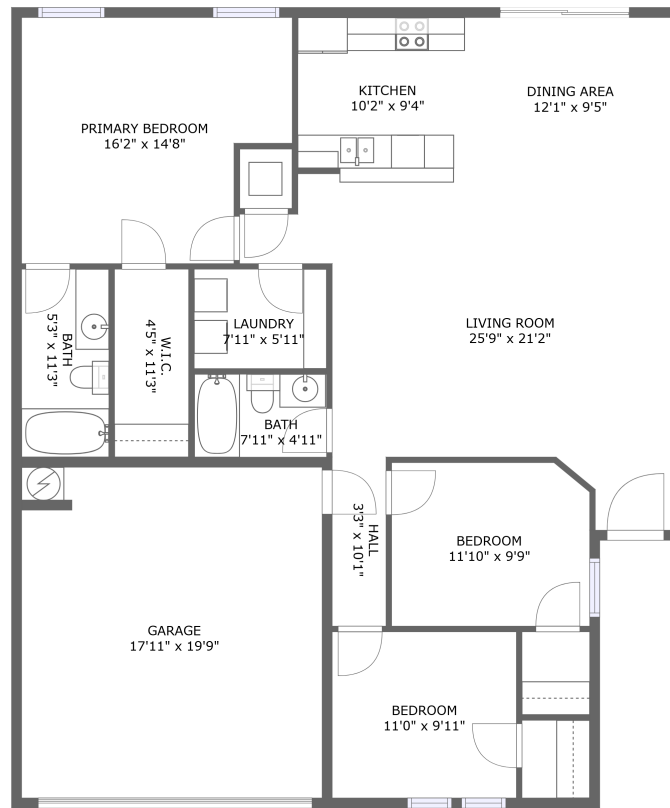


Home report

29761 Westfield Drive, Harvest, Limestone County,
Alabama, United States, 35749



FLOOR 1

Total GLA: 1444 sq. ft

Floor 1: 1444 sq. ft

Excluded: Garage 377 sq. ft, Undefined 11 sq. ft

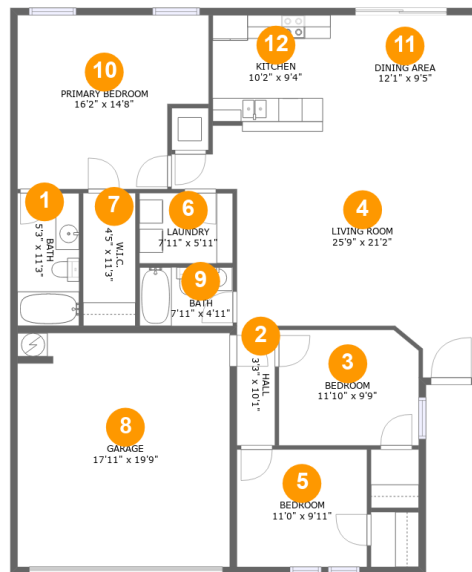
Property summary

 **1** Floors

 **3** Bedrooms

 **2** Bathrooms

 **1** Garages



Room dimensions

Floor 1

Total:1444sqft

Excluded: 388sqft

#		Max Dimensions	sqft	Included
1	Bath	5'3" x 11'3"	58 sq. ft	Yes
2	Hall	3'3" x 10'1"	32 sq. ft	Yes
3	Bedroom	11'10" x 9'9"	114 sq. ft	Yes
4	Living Room	25'9" x 21'2"	385 sq. ft	Yes
5	Bedroom	11'0" x 9'11"	109 sq. ft	Yes
6	Laundry	7'11" x 5'11"	47 sq. ft	Yes
7	W.I.C.	4'5" x 11'3"	50 sq. ft	Yes
8	Garage	17'11" x 19'9"	352 sq. ft	No
9	Bath	7'11" x 4'11"	39 sq. ft	Yes
10	Primary Bedroom	16'2" x 14'8"	212 sq. ft	Yes
11	Dining Area	12'1" x 9'5"	114 sq. ft	Yes

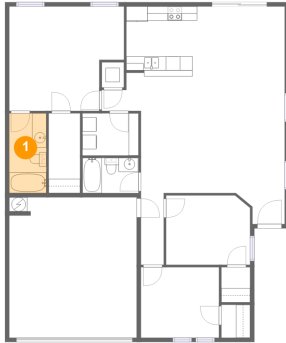
29761 Westfield Drive, Harvest, Limestone County,
Alabama, United States, 35749



#		Max Dimensions	sqft	Included
12	Kitchen	10'2" x 9'4"	94 sq. ft	Yes



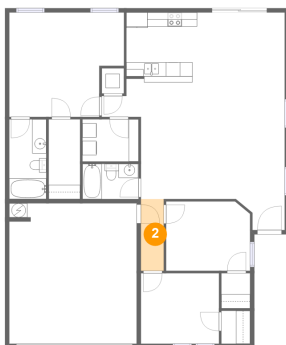
1 Floor 1 - Bath



Max Dimensions: 5'3" x
11'3"
Calculated Area: 58 sq. ft
Included: Yes

Heated: Yes
Finished: Yes
Enclosed: Yes
Contiguous:
Yes
Permitted: Yes
Wet space: Yes
Addition: No
Conversion: No

2 Floor 1 - Hall

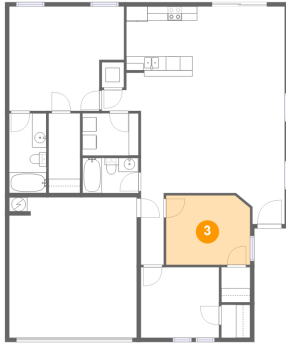


Max Dimensions: 3'3" x
10'1"
Calculated Area: 32 sq. ft
Included: Yes

Heated: Yes
Finished: Yes
Enclosed: Yes
Contiguous:
Yes
Permitted: Yes
Wet space: No
Addition: No
Conversion: No



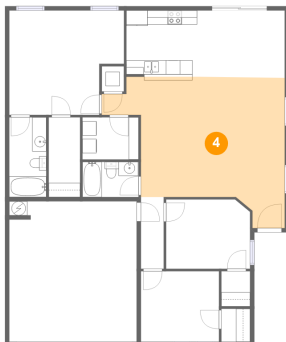
3 Floor 1 - Bedroom



Max Dimensions: 11'10" x 9'9"
Calculated Area: 114 sq. ft
Included: Yes

Heated: Yes
Finished: Yes
Enclosed: Yes
Contiguous: Yes
Permitted: Yes
Wet space: No
Addition: No
Conversion: No

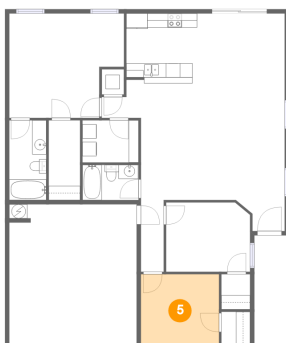
4 Floor 1 - Living Room



Max Dimensions: 25'9" x 21'2"
Calculated Area: 385 sq. ft
Included: Yes

Heated: Yes
Finished: Yes
Enclosed: Yes
Contiguous: Yes
Permitted: Yes
Wet space: No
Addition: No
Conversion: No

5 Floor 1 - Bedroom

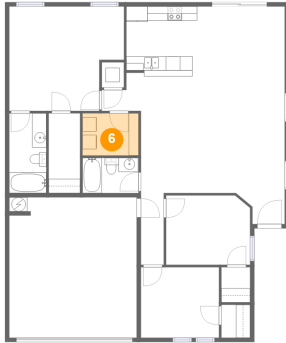


Max Dimensions: 11'0" x 9'11"
Calculated Area: 109 sq. ft
Included: Yes

Heated: Yes
Finished: Yes
Enclosed: Yes
Contiguous: Yes
Permitted: Yes
Wet space: No
Addition: No
Conversion: No



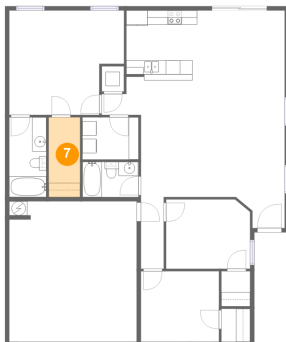
6 Floor 1 - Laundry



Max Dimensions: 7'11" x 5'11"
Calculated Area: 47 sq. ft
Included: Yes

Heated: Yes
Finished: Yes
Enclosed: Yes
Contiguous: Yes
Permitted: Yes
Wet space: No
Addition: No
Conversion: No

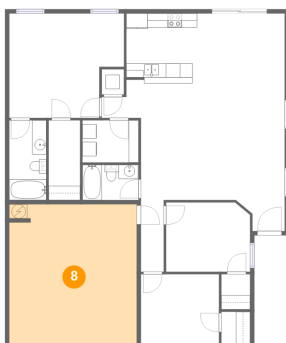
7 Floor 1 - W.I.C.



Max Dimensions: 4'5" x 11'3"
Calculated Area: 50 sq. ft
Included: Yes

Heated: Yes
Finished: Yes
Enclosed: Yes
Contiguous: Yes
Permitted: Yes
Wet space: No
Addition: No
Conversion: No

8 Floor 1 - Garage

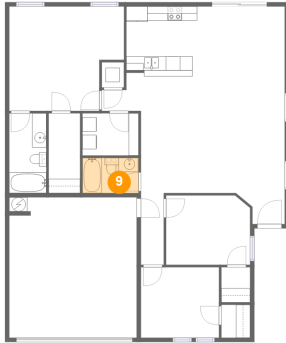


Max Dimensions: 17'11" x 19'9"
Calculated Area: 352 sq. ft
Included: No

Heated: No
Finished: No
Enclosed: Yes
Contiguous: Yes
Permitted: Yes
Wet space: No
Addition: No
Conversion: No



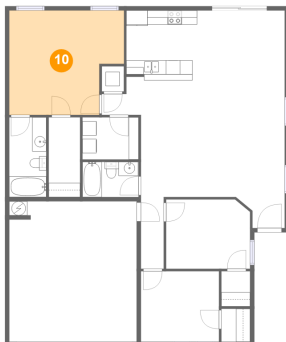
9 Floor 1 - Bath



Max Dimensions: 7'11" x 4'11"
Calculated Area: 39 sq. ft
Included: Yes

Heated: Yes
Finished: Yes
Enclosed: Yes
Contiguous: Yes
Permitted: Yes
Wet space: Yes
Addition: No
Conversion: No

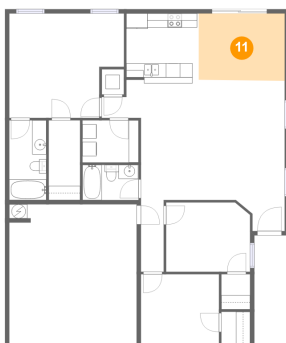
10 Floor 1 - Primary Bedroom



Max Dimensions: 16'2" x 14'8"
Calculated Area: 212 sq. ft
Included: Yes

Heated: Yes
Finished: Yes
Enclosed: Yes
Contiguous: Yes
Permitted: Yes
Wet space: No
Addition: No
Conversion: No

11 Floor 1 - Dining Area

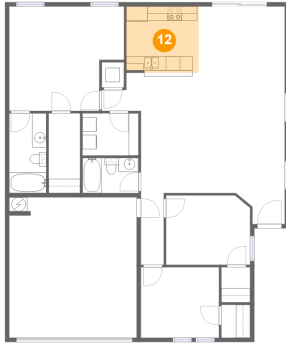


Max Dimensions: 12'1" x 9'5"
Calculated Area: 114 sq. ft
Included: Yes

Heated: Yes
Finished: Yes
Enclosed: Yes
Contiguous: Yes
Permitted: Yes
Wet space: No
Addition: No
Conversion: No



12 Floor 1 - Kitchen



Max Dimensions: 10'2" x
9'4"
Calculated Area: 94 sq. ft
Included: Yes

Heated: Yes
Finished: Yes
Enclosed: Yes
Contiguous:
Yes
Permitted: Yes
Wet space: No
Addition: No
Conversion: No