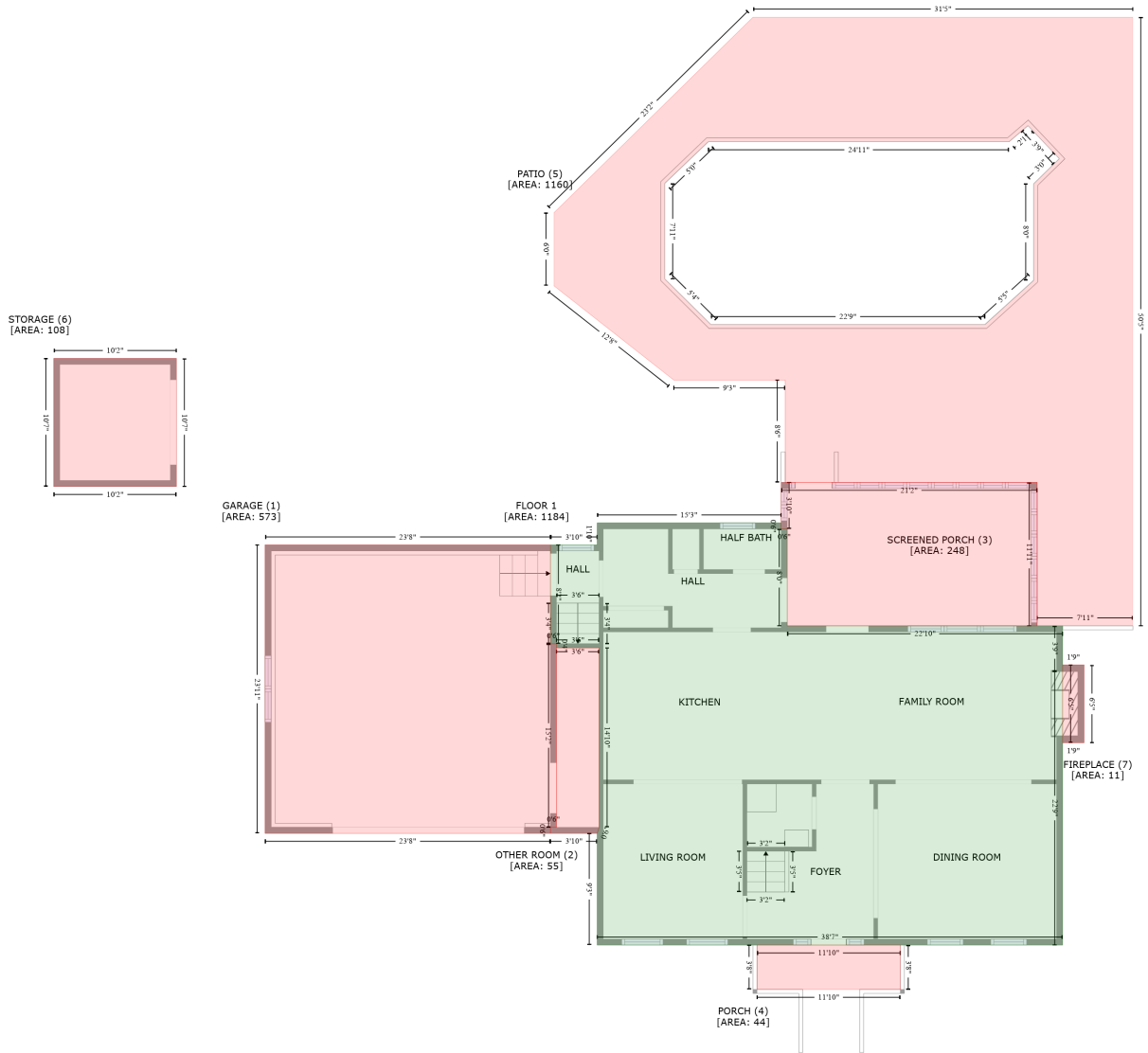


112 Newkirk Way, Travelers Rest, Greenville County, South Carolina, United States, 29690

Gross Living Area: 2513 sq. ft



Space	Area (sq. ft)	Calculation
FLOOR 1 (Living area)	1184	Coordinate Polygon Area Algorithm using inches $-((902.7 + 902.7) * (782.5 - 788.5) + (902.7 + 908.7) * (788.5 - 788.5) + (908.7 + 908.7) * (788.5 - 884.9) + (908.7 + 1182.5) * (884.9 - 884.9) + (1182.5 + 1182.5) * (884.9 - 929.7) + (1182.5 + 1182.5) * (929.7 - 1202.2) + (1182.5 + 719.8) * (1202.2 - 1202.2) + (719.8 + 719.8) * (1202.2 - 1091.2) + (719.8 + 721.8) * (1091.2 - 1085.2) + (721.8 + 721.8) * (1085.2 - 906.7) + (721.8 + 679.4) * (906.7 - 906.7) + (679.4 + 679.4) * (906.7 - 902.7) + (679.4 + 673.4) * (902.7 - 902.7) + (673.4 + 673.4) * (902.7 - 804.4) + (673.4 + 719.8) * (804.4 - 804.4) + (719.8 + 719.8) * (804.4 - 782.5) + (719.8 + 902.7) * (782.5 - 782.5)) * 0.5 * 0.00694$
GARAGE (Non-living area)	573	$-((673.4 + 673.4) * (804.4 - 902.7) + (673.4 + 679.4) * (902.7 - 902.7) + (679.4 + 679.4) * (902.7 - 1085.2) + (679.4 + 673.4) * (1085.2 - 1085.2) + (673.4 + 673.4) * (1085.2 - 1091.2) + (673.4 + 389.8) * (1091.2 - 1091.2) + (389.8 + 389.8) * (1091.2 - 804.4) + (389.8 + 673.4) * (804.4 -$

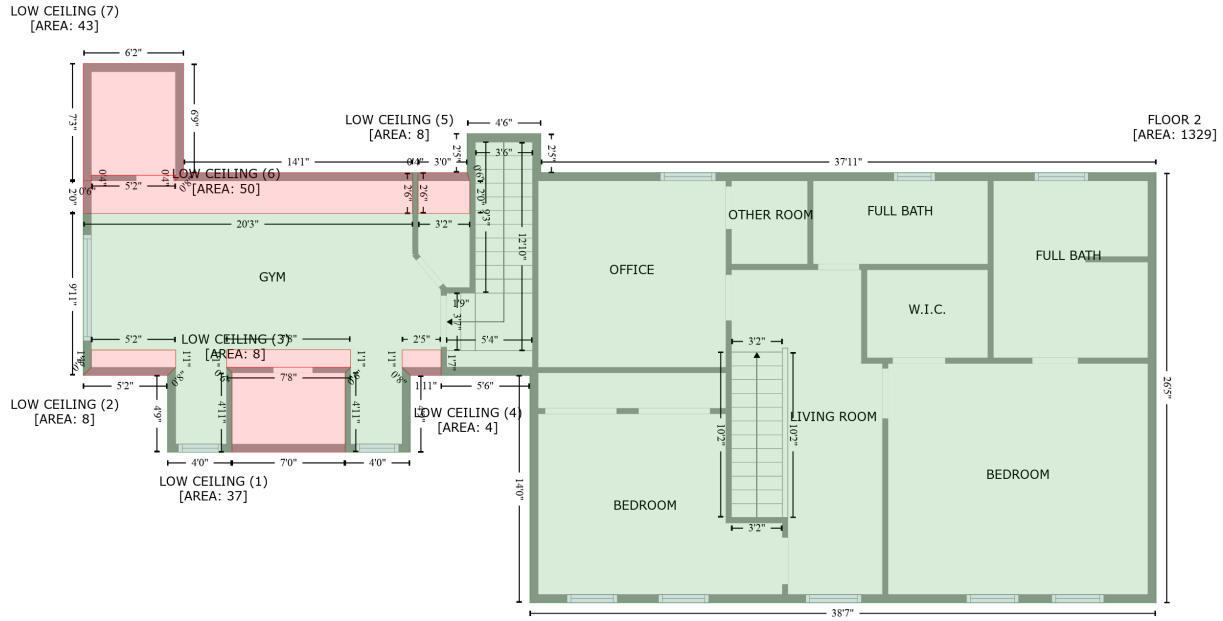
112 Newkirk Way, Travelers Rest, Greenville County, South Carolina, United States, 29690

Gross Living Area: 2513 sq. ft

Space	Area (sq. ft)	Calculation <small>Coordinate Polygon Area Algorithm using inches</small>
		$804.4) * 0.5 * 0.00694$
OTHER ROOM (Non-living area)	55	$-((721.8 + 721.8) * (906.7 - 1085.2) + (721.8 + 719.8) * (1085.2 - 1091.2) + (719.8 + 673.4) * (1091.2 - 1091.2) + (673.4 + 673.4) * (1091.2 - 1085.2) + (673.4 + 679.4) * (1085.2 - 1085.2) + (679.4 + 679.4) * (1085.2 - 906.7) + (679.4 + 721.8) * (906.7 - 906.7)) * 0.5 * 0.00694$
SCREENED PORCH (Non-living area)	248	$-((1157.1 + 1157.1) * (742.2 - 884.9) + (1157.1 + 908.7) * (884.9 - 884.9) + (908.7 + 908.7) * (884.9 - 788.5) + (908.7 + 902.7) * (788.5 - 788.5) + (902.7 + 902.7) * (788.5 - 742.2) + (902.7 + 1157.1) * (742.2 - 742.2)) * 0.5 * 0.00694$
PORCH (Non-living area)	44	$-((1021.1 + 1021.1) * (1202.2 - 1246.4) + (1021.1 + 878.7) * (1246.4 - 1246.4) + (878.7 + 878.7) * (1246.4 - 1202.2) + (878.7 + 1021.1) * (1202.2 - 1202.2)) * 0.5 * 0.00694$
PATIO (Non-living area)	1160	$-((1252.3 + 1252.3) * (279.5 - 884.9) + (1252.3 + 1157.1) * (884.9 - 884.9) + (1157.1 + 1157.1) * (884.9 - 742.2) + (1157.1 + 906.7) * (742.2 - 742.2) + (906.7 + 906.7) * (742.2 - 640.4) + (906.7 + 795.9) * (640.4 - 640.4) + (795.9 + 676.8) * (640.4 - 546.7) + (676.8 + 676.8) * (546.7 - 474.2) + (676.8 + 874.9) * (474.2 - 279.5) + (874.9 + 1252.3) * (279.5 - 279.5)) * 0.5 * 0.00694 + -((1148 + 1129.2) * (387.5 - 403.6) + (1129.2 + 830.2) * (403.6 - 403.6) + (830.2 + 787) * (403.6 - 444.9) + (787 + 787) * (444.9 - 539.9) + (787 + 832.7) * (539.9 - 585.2) + (832.7 + 1105.3) * (585.2 - 585.2) + (1105.3 + 1153.6) * (585.2 - 541.3) + (1153.6 + 1153.6) * (541.3 - 445.3) + (1153.6 + 1179.1) * (445.3 - 420.3) + (1179.1 + 1148) * (420.3 - 387.5)) * 0.5 * 0.00694$
STORAGE (Non-living area)	108	$-((301.7 + 301.7) * (618.9 - 746.3) + (301.7 + 179.7) * (746.3 - 746.3) + (179.7 + 179.7) * (746.3 - 618.9) + (179.7 + 301.7) * (618.9 - 618.9)) * 0.5 * 0.00694$
FIREPLACE (Non-living area)	11	$-((1203.7 + 1203.7) * (923.7 - 1001.2) + (1203.7 + 1182.5) * (1001.2 - 1001.2) + (1182.5 + 1182.5) * (1001.2 - 923.7) + (1182.5 + 1203.7) * (923.7 - 923.7)) * 0.5 * 0.00694$

112 Newkirk Way, Travelers Rest, Greenville County, South Carolina, United States, 29690

Gross Living Area: 2513 sq. ft



Space	Area (sq. ft)	Calculation
FLOOR 2 (Living area)	1329	$-\left((727.8 + 727.8) * (856.1 - 884.9) + (727.8 + 1182.5) * (884.9 - 884.9) + (1182.5 + 1182.5) * (884.9 - 1202.2) + (1182.5 + 719.8) * (1202.2 - 1202.2) + (719.8 + 719.8) * (1202.2 - 1034.5) + (719.8 + 654.2) * (1034.5 - 1034.5) + (654.2 + 654.2) * (1034.5 - 1015.7) + (654.2 + 625.4) * (1015.7 - 1015.7) + (625.4 + 625.4) * (1015.7 - 1028.5) + (625.4 + 631.4) * (1028.5 - 1034.5) + (631.4 + 631.4) * (1034.5 - 1091.2) + (631.4 + 583.3) * (1091.2 - 1091.2) + (583.3 + 583.3) * (1091.2 - 1032.5) + (583.3 + 587.3) * (1032.5 - 1028.5) + (587.3 + 587.3) * (1028.5 - 1015.5) + (587.3 + 495.7) * (1015.5 - 1015.5) + (495.7 + 495.7) * (1015.5 - 1028.5) + (495.7 + 499.7) * (1028.5 - 1032.5) + (499.7 + 499.7) * (1032.5 - 1091.2) + (499.7 + 452.1) * (1091.2 - 1091.2) + (452.1 + 452.1) * (1091.2 - 1034.5) + (452.1 + 458.1) * (1034.5 - 1028.5) + (458.1 + 458.1) * (1028.5 - 1015.8) + (458.1 + 395.8) * (1015.8 - 1015.8) + (395.8 + 395.8) * (1015.8 - 1028.5) + (395.8 + 389.8) * (1028.5 - 1034.5) + (389.8 + 389.8) * (1034.5 - 915) + (389.8 + 633.2) * (915 - 915) + (633.2 + 633.2) * (915 - 884.9) + (633.2 + 637.2) * (884.9 - 884.9) + (637.2 + 637.2) * (884.9 - 915.1) + (637.2 + 675.4) * (915.1 - 915.1) + (675.4 + 675.4) * (915.1 - 890.9) + (675.4 + 673.4) * (890.9 - 884.9) + (673.4 + 673.4) * (884.9 - 856.1) + (673.4 + 727.8) * (856.1 - 856.1)) * 0.5 * 0.00694$
LOW CEILING (Non-living area)	37	$-\left((587.3 + 583.3) * (1028.5 - 1032.5) + (583.3 + 583.3) * (1032.5 - 1091.2) + (583.3 + 499.7) * (1091.2 - 1091.2) + (499.7 + 499.7) * (1091.2 - 1032.5) + (499.7 + 495.7) * (1032.5 - 1028.5) + (495.7 + 587.3) * (1028.5 - 1028.5)) * 0.5 * 0.00694$
LOW CEILING (Non-living area)	8	$-\left((458.1 + 458.1) * (1015.8 - 1028.5) + (458.1 + 452.1) * (1028.5 - 1034.5) + (452.1 + 389.8) * (1034.5 - 1034.5) + (389.8 + 395.8) * (1034.5 - 1028.5) + (395.8 + 395.8) * (1028.5 - 1015.8) + (395.8 + 458.1) * (1015.8 - 1015.8)) * 0.5 * 0.00694$
LOW CEILING (Non-living area)	8	$-\left((587.3 + 587.3) * (1015.5 - 1028.5) + (587.3 + 495.7) * (1028.5 - 1028.5) + (495.7 + 495.7) * (1028.5 - 1015.5) + (495.7 + 587.3) * (1015.5 - 1015.5)) * 0.5 * 0.00694$
LOW CEILING (Non-living area)	4	$-\left((654.2 + 654.2) * (1015.7 - 1034.5) + (654.2 + 631.4) * (1034.5 - 1034.5) + (631.4 + 625.4) * (1034.5 - 1028.5) + (625.4 + 625.4) * (1028.5 - 1015.7) + (625.4 + 654.2) * (1015.7 - 1015.7)) * 0.5 * 0.00694$
LOW CEILING (Non-living area)	8	$-\left((673.4 + 675.4) * (884.9 - 890.9) + (675.4 + 675.4) * (890.9 - 915.1) + (675.4 + 637.2) * (915.1 - 915.1) + (637.2 + 637.2) * (915.1 - 884.9) + (637.2 + 673.4) * (884.9 - 884.9)) * 0.5 * 0.00694$

112 Newkirk Way, Travelers Rest, Greenville County, South Carolina, United States, 29690

Gross Living Area: 2513 sq. ft

Space	Area (sq. ft)	Calculation <small>Coordinate Polygon Area Algorithm using inches</small>
LOW CEILING (Non-living area)	50	$-\left((633.2 + 633.2) * (884.9 - 915) + (633.2 + 389.8) * (915 - 915) + (389.8 + 389.8) * (915 - 890.9) + (389.8 + 395.8) * (890.9 - 890.9) + (395.8 + 395.8) * (890.9 - 886.9) + (395.8 + 457.9) * (886.9 - 886.9) + (457.9 + 457.9) * (886.9 - 890.9) + (457.9 + 463.9) * (890.9 - 884.9) + (463.9 + 633.2) * (884.9 - 884.9)\right) * 0.5 * 0.00694$
LOW CEILING (Non-living area)	43	$-\left((463.9 + 463.9) * (804.4 - 884.9) + (463.9 + 457.9) * (884.9 - 890.9) + (457.9 + 457.9) * (890.9 - 886.9) + (457.9 + 395.8) * (886.9 - 886.9) + (395.8 + 395.8) * (886.9 - 890.9) + (395.8 + 389.8) * (890.9 - 890.9) + (389.8 + 389.8) * (890.9 - 804.4) + (389.8 + 463.9) * (804.4 - 804.4)\right) * 0.5 * 0.00694$