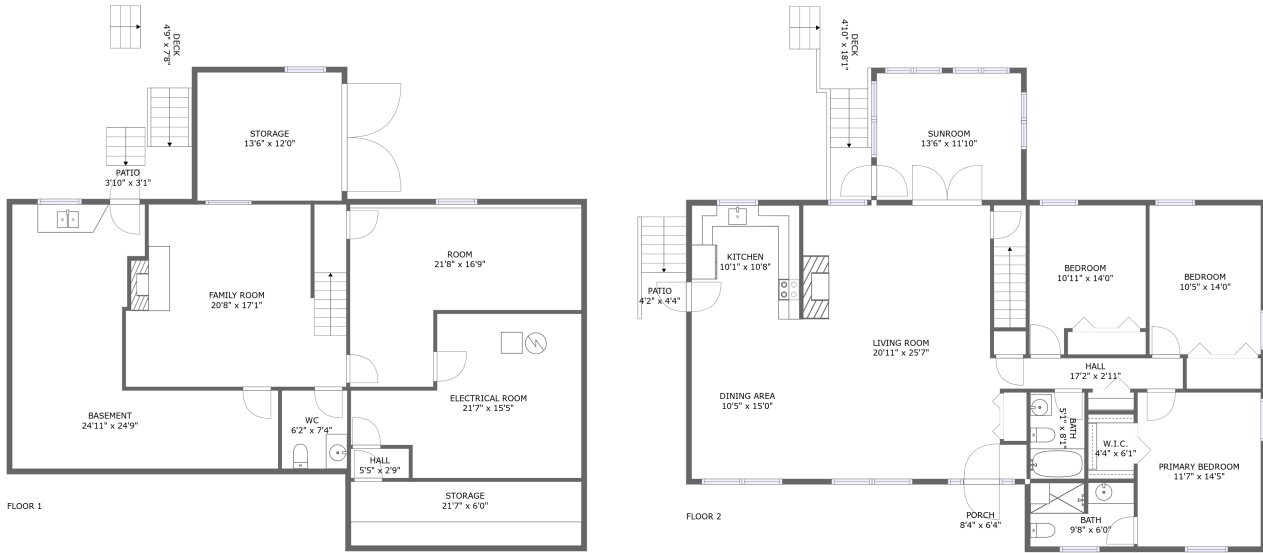


1024 Starmount Avenue, Starmount, Hollins, Roanoke County, Virginia, United States, 24019

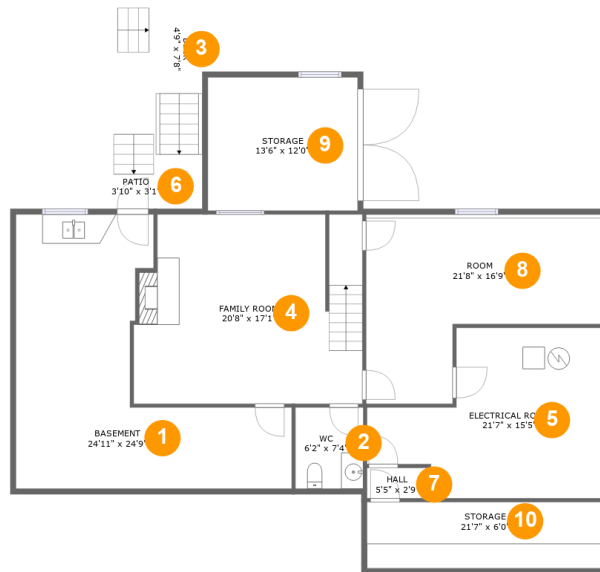


Property Summary

0 garages **3** bedrooms **2** bathrooms **1** half baths

2 floors **2,188** Gross Living Area sqft **3,784** total sqft

1024 Starmount Avenue, Starmount, Hollins, Roanoke County, Virginia, United States, 24019



Room Dimensions

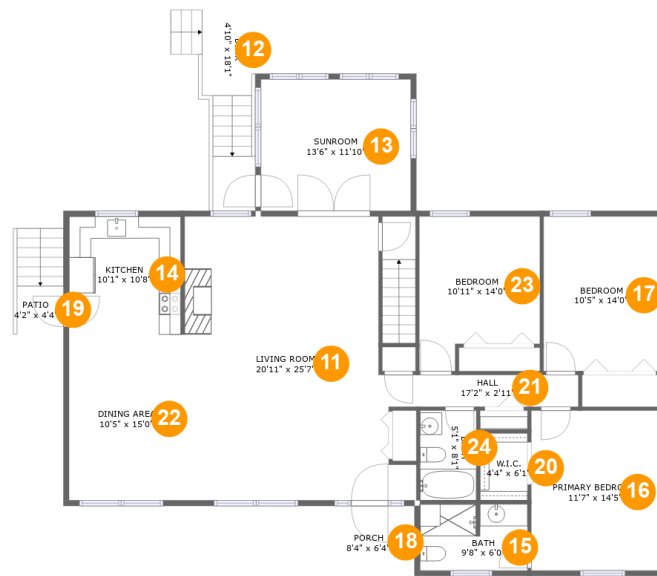
Floor 1

Total sqft: 1835

Living area: 420

#	Room name	Dimensions	Area (sqft)	Counted as Living Area
1	Basement	24'11" x 24'9"	375 sq. ft	No
2	Wc	6'2" x 7'4"	45 sq. ft	Yes
3	Deck	4'9" x 7'8"	69 sq. ft	No
4	Family Room	20'8" x 17'1"	337 sq. ft	Yes
5	Electrical Room	21'7" x 15'5"	256 sq. ft	No
6	Patio	3'10" x 3'1"	25 sq. ft	No
7	Hall	5'5" x 2'9"	15 sq. ft	No
8	Room	21'8" x 16'9"	271 sq. ft	No
9	Storage	13'6" x 12'0"	163 sq. ft	No
10	Storage	21'7" x 6'0"	129 sq. ft	No

1024 Starmount Avenue, Starmount, Hollins, Roanoke County, Virginia, United States, 24019



Room Dimensions

Floor 2

Total sqft: 1949

Living area: 1768

#	Room name	Dimensions	Area (sqft)	Counted as Living Area
11	Living Room	20'11" x 25'7"	467 sq. ft	Yes
12	Deck	4'10" x 18'1"	88 sq. ft	No
13	Sunroom	13'6" x 11'10"	161 sq. ft	Yes
14	Kitchen	10'1" x 10'8"	108 sq. ft	Yes
15	Bath	9'8" x 6'0"	57 sq. ft	Yes
16	Primary Bedroom	11'7" x 14'5"	167 sq. ft	Yes
17	Bedroom	10'5" x 14'0"	146 sq. ft	Yes
18	Porch	8'4" x 6'4"	53 sq. ft	No
19	Patio	4'2" x 4'4"	40 sq. ft	No
20	W.i.c.	4'4" x 6'1"	26 sq. ft	Yes
21	Hall	17'2" x 2'11"	49 sq. ft	Yes

Scan captured on Wed, 23 Oct 2024 16:24:19 GMT

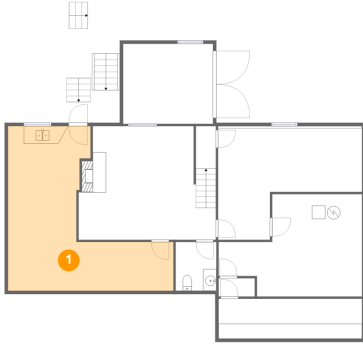
Information is calculated by CubiCasa technology; deemed highly reliable but not guaranteed.

**1024 Starmount Avenue, Starmount, Hollins,
Roanoke County, Virginia, United States, 24019**

#	Room name	Dimensions	Area (sqft)	Counted as Living Area
22	Dining Area	10'5" x 15'0"	156 sq. ft	Yes
23	Bedroom	10'11" x 14'0"	133 sq. ft	Yes
24	Bath	5'1" x 8'1"	41 sq. ft	Yes

1024 Starmount Avenue, Starmount, Hollins, Roanoke County, Virginia, United States, 24019

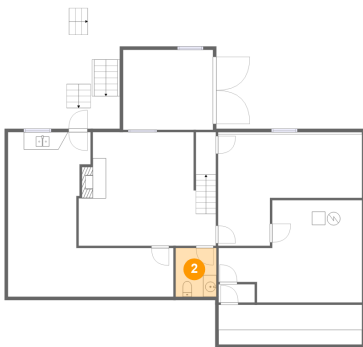
1 Floor 1 - Basement



Dimensions: 24'11" x 24'9"
Area: 375 sq. ft
Counted as Living Area: No

Heated: Yes
Finished: Yes
Enclosed: Yes
Contiguous: Yes
Permitted: Yes
Wet Space: No
Addition: No
Conversion: No

2 Floor 1 - Wc

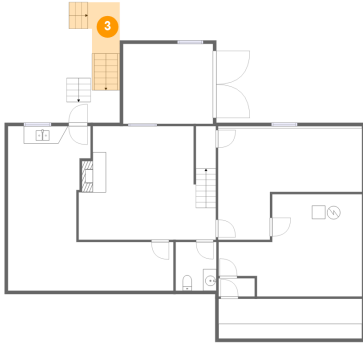


Dimensions: 6'2" x 7'4"
Area: 45 sq. ft
Counted as Living Area:
Yes

Heated: Yes
Finished: Yes
Enclosed: Yes
Contiguous:
Yes
Permitted: Yes
Wet Space: Yes
Addition: No
Conversion: No

1024 Starmount Avenue, Starmount, Hollins, Roanoke County, Virginia, United States, 24019

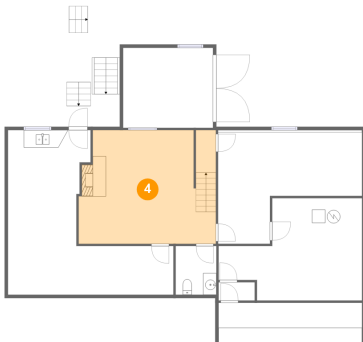
3 Floor 1 - Deck



Dimensions: 4'9" x 7'8"
Area: 69 sq. ft
Counted as Living Area: No

Heated: No
Finished: Yes
Enclosed: No
Contiguous: Yes
Permitted: Yes
Wet Space: No
Addition: No
Conversion: No

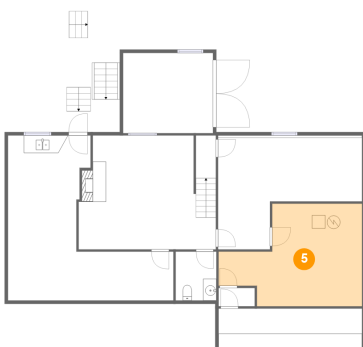
4 Floor 1 - Family Room



Dimensions: 20'8" x 17'1"
Area: 337 sq. ft
Counted as Living Area:
Yes

Heated: Yes
Finished: Yes
Enclosed: Yes
Contiguous:
Yes
Permitted: Yes
Wet Space: No
Addition: No
Conversion: No

5 Floor 1 - Electrical Room

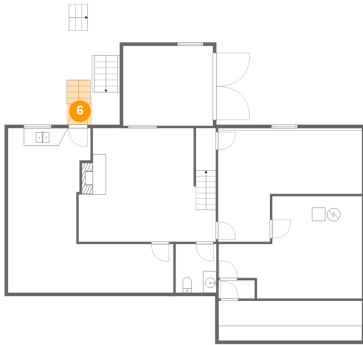


Dimensions: 21'7" x 15'5"
Area: 256 sq. ft
Counted as Living Area: No

Heated: No
Finished: No
Enclosed: Yes
Contiguous: Yes
Permitted: Yes
Wet Space: No
Addition: No
Conversion: No

1024 Starmount Avenue, Starmount, Hollins, Roanoke County, Virginia, United States, 24019

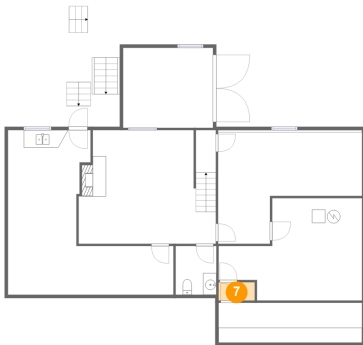
6 Floor 1 - Patio



Dimensions: 3'10" x 3'1"
Area: 25 sq. ft
Counted as Living Area: No

Heated: No
Finished: Yes
Enclosed: No
Contiguous: Yes
Permitted: Yes
Wet Space: No
Addition: No
Conversion: No

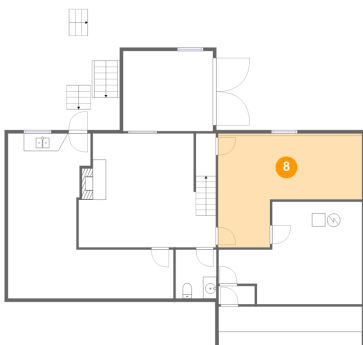
7 Floor 1 - Hall



Dimensions: 5'5" x 2'9"
Area: 15 sq. ft
Counted as Living Area: No

Heated: Yes
Finished: No
Enclosed: Yes
Contiguous: Yes
Permitted: Yes
Wet Space: No
Addition: No
Conversion: No

8 Floor 1 - Room

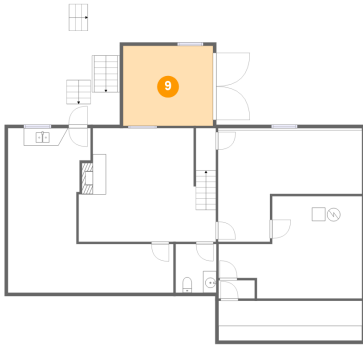


Dimensions: 21'8" x 16'9"
Area: 271 sq. ft
Counted as Living Area: No

Heated: Yes
Finished: Yes
Enclosed: Yes
Contiguous: Yes
Permitted: Yes
Wet Space: No
Addition: No
Conversion: No

1024 Starmount Avenue, Starmount, Hollins, Roanoke County, Virginia, United States, 24019

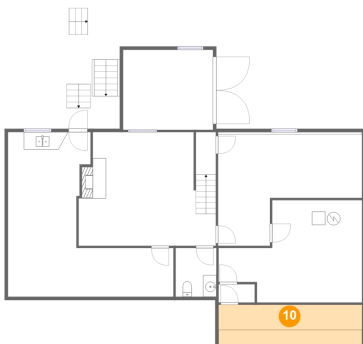
9 Floor 1 - Storage



Dimensions: 13'6" x 12'0"
Area: 163 sq. ft
Counted as Living Area: No

Heated: No
Finished: No
Enclosed: No
Contiguous: Yes
Permitted: Yes
Wet Space: No
Addition: No
Conversion: No

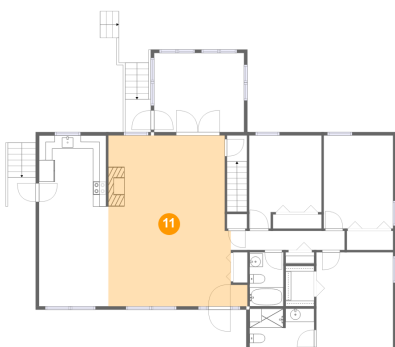
10 Floor 1 - Storage



Dimensions: 21'7" x 6'0"
Area: 129 sq. ft
Counted as Living Area: No

Heated: No
Finished: No
Enclosed: No
Contiguous: Yes
Permitted: Yes
Wet Space: No
Addition: No
Conversion: No

11 Floor 2 - Living Room

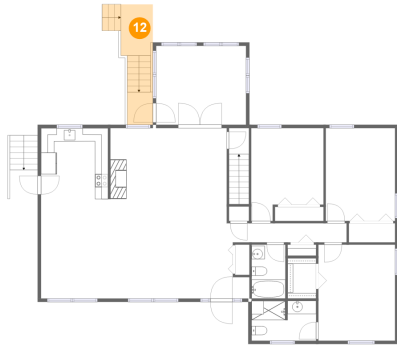


Dimensions: 20'11" x 25'7"
Area: 467 sq. ft
Counted as Living Area: Yes

Heated: Yes
Finished: Yes
Enclosed: Yes
Contiguous: Yes
Permitted: Yes
Wet Space: No
Addition: No
Conversion: No

1024 Starmount Avenue, Starmount, Hollins, Roanoke County, Virginia, United States, 24019

12 Floor 2 - Deck



Dimensions: 4'10" x 18'1"
Area: 88 sq. ft
Counted as Living Area: No

Heated: No
Finished: Yes
Enclosed: No
Contiguous: Yes
Permitted: Yes
Wet Space: No
Addition: No
Conversion: No

13 Floor 2 - Sunroom



Dimensions: 13'6" x 11'10"
Area: 161 sq. ft
Counted as Living Area:
Yes

Heated: Yes
Finished: Yes
Enclosed: Yes
Contiguous:
Yes
Permitted: Yes
Wet Space: No
Addition: No
Conversion: No

14 Floor 2 - Kitchen

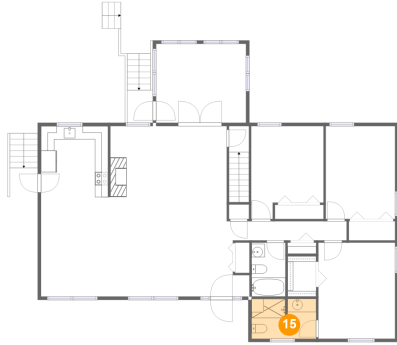


Dimensions: 10'1" x 10'8"
Area: 108 sq. ft
Counted as Living Area:
Yes

Heated: Yes
Finished: Yes
Enclosed: Yes
Contiguous:
Yes
Permitted: Yes
Wet Space: No
Addition: No
Conversion: No

1024 Starmount Avenue, Starmount, Hollins, Roanoke County, Virginia, United States, 24019

15 Floor 2 - Bath



Dimensions: 9'8" x 6'0"
Area: 57 sq. ft
Counted as Living Area:
Yes

Heated: Yes
Finished: Yes
Enclosed: Yes
Contiguous:
Yes
Permitted: Yes
Wet Space: Yes
Addition: No
Conversion: No

16 Floor 2 - Primary Bedroom



Dimensions: 11'7" x 14'5"
Area: 167 sq. ft
Counted as Living Area:
Yes

Heated: Yes
Finished: Yes
Enclosed: Yes
Contiguous:
Yes
Permitted: Yes
Wet Space: No
Addition: No
Conversion: No

17 Floor 2 - Bedroom

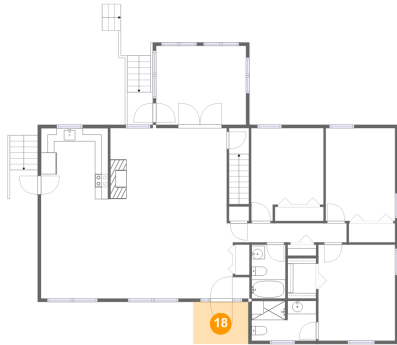


Dimensions: 10'5" x 14'0"
Area: 146 sq. ft
Counted as Living Area:
Yes

Heated: Yes
Finished: Yes
Enclosed: Yes
Contiguous:
Yes
Permitted: Yes
Wet Space: No
Addition: No
Conversion: No

1024 Starmount Avenue, Starmount, Hollins, Roanoke County, Virginia, United States, 24019

18 Floor 2 - Porch



Dimensions: 8'4" x 6'4"
Area: 53 sq. ft
Counted as Living Area: No

Heated: No
Finished: Yes
Enclosed: No
Contiguous: Yes
Permitted: Yes
Wet Space: No
Addition: No
Conversion: No

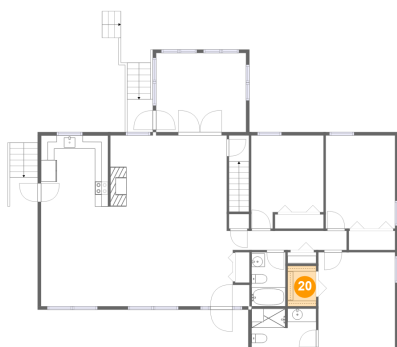
19 Floor 2 - Patio



Dimensions: 4'2" x 4'4"
Area: 40 sq. ft
Counted as Living Area: No

Heated: No
Finished: Yes
Enclosed: No
Contiguous: Yes
Permitted: Yes
Wet Space: No
Addition: No
Conversion: No

20 Floor 2 - W.i.c.



Dimensions: 4'4" x 6'1"
Area: 26 sq. ft
Counted as Living Area:
Yes

Heated: Yes
Finished: Yes
Enclosed: Yes
Contiguous:
Yes
Permitted: Yes
Wet Space: No
Addition: No
Conversion: No

1024 Starmount Avenue, Starmount, Hollins, Roanoke County, Virginia, United States, 24019

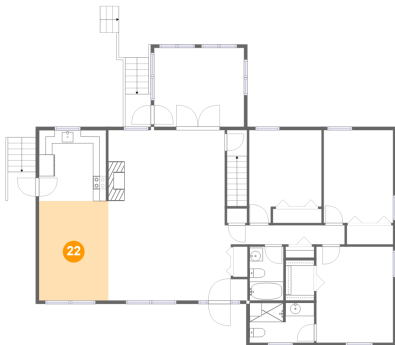
21 Floor 2 - Hall



Dimensions: 17'2" x 2'11"
Area: 49 sq. ft
Counted as Living Area:
Yes

Heated: Yes
Finished: Yes
Enclosed: Yes
Contiguous:
Yes
Permitted: Yes
Wet Space: No
Addition: No
Conversion: No

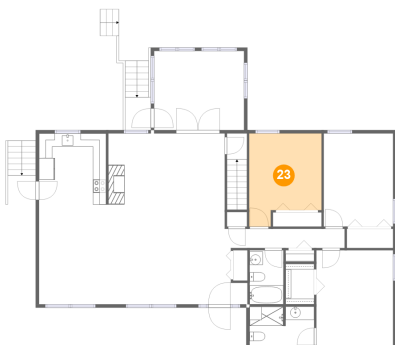
22 Floor 2 - Dining Area



Dimensions: 10'5" x 15'0"
Area: 156 sq. ft
Counted as Living Area:
Yes

Heated: Yes
Finished: Yes
Enclosed: Yes
Contiguous:
Yes
Permitted: Yes
Wet Space: No
Addition: No
Conversion: No

23 Floor 2 - Bedroom

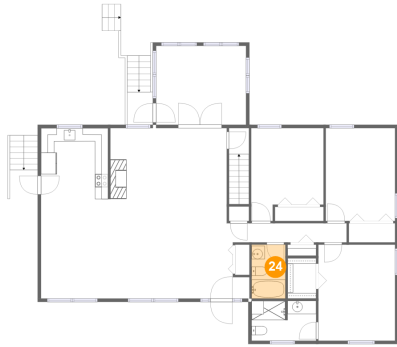


Dimensions: 10'11" x 14'0"
Area: 133 sq. ft
Counted as Living Area:
Yes

Heated: Yes
Finished: Yes
Enclosed: Yes
Contiguous:
Yes
Permitted: Yes
Wet Space: No
Addition: No
Conversion: No

**1024 Starmount Avenue, Starmount, Hollins,
Roanoke County, Virginia, United States, 24019**

24 Floor 2 - Bath



Dimensions: 5'1" x 8'1"
Area: 41 sq. ft
Counted as Living Area:
Yes

Heated: Yes
Finished: Yes
Enclosed: Yes
Contiguous:
Yes
Permitted: Yes
Wet Space: Yes
Addition: No
Conversion: No