



Home report


214 Country Club Circle, Brevard, Transylvania County, North Carolina, United States, 28712




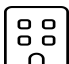
Property summary


 **1** Garages


 **5** Bedrooms

 **3** Bathrooms

 **1** Half baths

 **2** Floors

 **3,075** Gross living area sqft

 **4,331** Total sqft

214 Country Club Circle, Brevard, Transylvania County, North Carolina, United States, 28712



Room dimensions

Floor 1 Total sqft: 2744 Living area: 1587

#		Dimensions	sqft	Counted as living area
1	Bath	9'3" x 17'11"	101 sq. ft	Yes
2	Primary Bedroom	15'5" x 17'3"	265 sq. ft	Yes
3	Hall	9'5" x 13'3"	127 sq. ft	Yes
4	Dining Area	13'1" x 11'11"	157 sq. ft	Yes
5	WC	3'1" x 7'2"	22 sq. ft	Yes
6	Laundry	5'9" x 11'11"	64 sq. ft	Yes
7	Garage	19'5" x 21'4"	415 sq. ft	No
8	Kitchen	15'8" x 11'11"	187 sq. ft	Yes
9	Hall	8'4" x 3'8"	30 sq. ft	Yes
10	Foyer	13'0" x 4'0"	52 sq. ft	Yes
11	Patio	48'5" x 18'8"	624 sq. ft	No

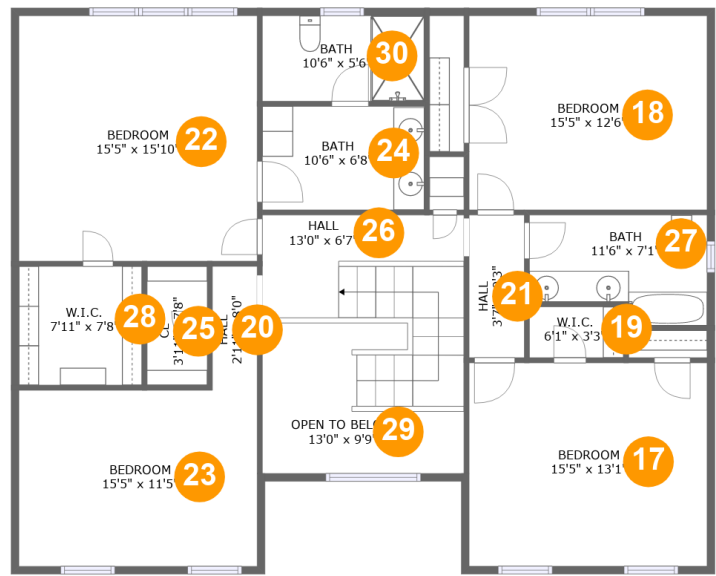
Home report

214 Country Club Circle, Brevard, Transylvania County, North Carolina, United States, 28712

#		Dimensions	sqft	Counted as living area
12	Living Room	15'5" x 23'3"	359 sq. ft	Yes
13	Hall	4'9" x 5'8"	23 sq. ft	Yes
14	Porch	12'8" x 5'11"	76 sq. ft	No
15	W.I.C.	3'8" x 6'0"	22 sq. ft	Yes
16	W.I.C.	3'8" x 6'0"	22 sq. ft	Yes

Home report

214 Country Club Circle, Brevard, Transylvania County, North Carolina, United States, 28712



Room dimensions

Floor 2 Total sqft: 1587 Living area: 1488

#		Dimensions	sqft	Counted as living area
17	Bedroom	15'5" x 13'1"	202 sq. ft	Yes
18	Bedroom	15'5" x 12'6"	193 sq. ft	Yes
19	W.I.C.	6'1" x 3'3"	20 sq. ft	Yes
20	Hall	2'11" x 8'0"	23 sq. ft	Yes
21	Hall	3'7" x 9'3"	33 sq. ft	Yes
22	Bedroom	15'5" x 15'10"	244 sq. ft	Yes
23	Bedroom	15'5" x 11'5"	175 sq. ft	Yes
24	Bath	10'6" x 6'8"	70 sq. ft	Yes
25	Cl	3'11" x 7'8"	30 sq. ft	Yes
26	Hall	13'0" x 6'7"	125 sq. ft	Yes
27	Bath	11'6" x 7'1"	72 sq. ft	Yes

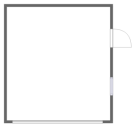
Home report

214 Country Club Circle, Brevard, Transylvania County, North Carolina, United States, 28712

#		Dimensions	sqft	Counted as living area
28	W.I.C.	7'11" x 7'8"	61 sq. ft	Yes
29	Open To Below	13'0" x 9'9"	93 sq. ft	No
30	Bath	10'6" x 5'6"	58 sq. ft	Yes

214 Country Club Circle, Brevard, Transylvania County, North Carolina, United States, 28712

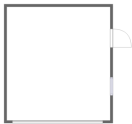
1 Floor 1 - Bath



Dimensions: 9'3" x 17'11"
Area: 101 sq. ft
Counted as living area: Yes

Heated: Yes
Finished: Yes
Enclosed: Yes
Contiguous: Yes
Permitted: Yes
Wet space: Yes
Addition: No
Conversion: No

2 Floor 1 - Primary Bedroom

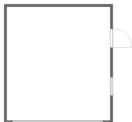


Dimensions: 15'5" x 17'3"
Area: 265 sq. ft
Counted as living area: Yes

Heated: Yes
Finished: Yes
Enclosed: Yes
Contiguous: Yes
Permitted: Yes
Wet space: No
Addition: No
Conversion: No

214 Country Club Circle, Brevard, Transylvania County, North Carolina, United States, 28712

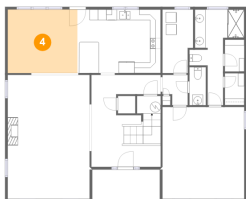
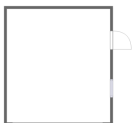
3 Floor 1 - Hall



Dimensions: 9'5" x 13'3"
Area: 127 sq. ft
Counted as living area: Yes

Heated: Yes
Finished: Yes
Enclosed: Yes
Contiguous: Yes
Permitted: Yes
Wet space: No
Addition: No
Conversion: No

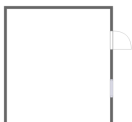
4 Floor 1 - Dining Area



Dimensions: 13'1" x 11'11"
Area: 157 sq. ft
Counted as living area: Yes

Heated: Yes
Finished: Yes
Enclosed: Yes
Contiguous: Yes
Permitted: Yes
Wet space: No
Addition: No
Conversion: No

5 Floor 1 - WC

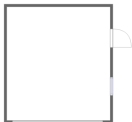


Dimensions: 3'1" x 7'2"
Area: 22 sq. ft
Counted as living area: Yes

Heated: Yes
Finished: Yes
Enclosed: Yes
Contiguous: Yes
Permitted: Yes
Wet space: Yes
Addition: No
Conversion: No

214 Country Club Circle, Brevard, Transylvania County, North Carolina, United States, 28712

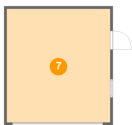
6 Floor 1 - Laundry



Dimensions: 5'9" x 11'11"
Area: 64 sq. ft
Counted as living area: Yes

Heated: Yes
Finished: Yes
Enclosed: Yes
Contiguous: Yes
Permitted: Yes
Wet space: No
Addition: No
Conversion: No

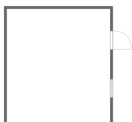
7 Floor 1 - Garage



Dimensions: 19'5" x 21'4"
Area: 415 sq. ft
Counted as living area: No

Heated: No
Finished: No
Enclosed: Yes
Contiguous: Yes
Permitted: Yes
Wet space: No
Addition: No
Conversion: No

8 Floor 1 - Kitchen

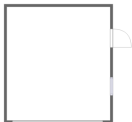


Dimensions: 15'8" x 11'11"
Area: 187 sq. ft
Counted as living area: Yes

Heated: Yes
Finished: Yes
Enclosed: Yes
Contiguous: Yes
Permitted: Yes
Wet space: No
Addition: No
Conversion: No

214 Country Club Circle, Brevard, Transylvania County, North Carolina, United States, 28712

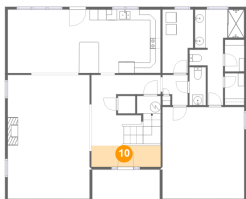
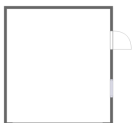
9 Floor 1 - Hall



Dimensions: 8'4" x 3'8"
Area: 30 sq. ft
Counted as living area: Yes

Heated: Yes
Finished: Yes
Enclosed: Yes
Contiguous: Yes
Permitted: Yes
Wet space: No
Addition: No
Conversion: No

10 Floor 1 - Foyer



Dimensions: 13'0" x 4'0"
Area: 52 sq. ft
Counted as living area: Yes

Heated: Yes
Finished: Yes
Enclosed: Yes
Contiguous: Yes
Permitted: Yes
Wet space: No
Addition: No
Conversion: No

11 Floor 1 - Patio

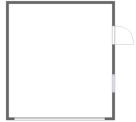


Dimensions: 48'5" x 18'8"
Area: 624 sq. ft
Counted as living area: No

Heated: No
Finished: Yes
Enclosed: No
Contiguous: Yes
Permitted: Yes
Wet space: No
Addition: No
Conversion: No

214 Country Club Circle, Brevard, Transylvania County, North Carolina, United States, 28712

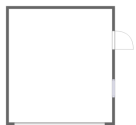
12 Floor 1 - Living Room



Dimensions: 15'5" x 23'3"
Area: 359 sq. ft
Counted as living area: Yes

Heated: Yes
Finished: Yes
Enclosed: Yes
Contiguous: Yes
Permitted: Yes
Wet space: No
Addition: No
Conversion: No

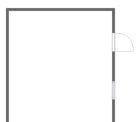
13 Floor 1 - Hall



Dimensions: 4'9" x 5'8"
Area: 23 sq. ft
Counted as living area: Yes

Heated: Yes
Finished: Yes
Enclosed: Yes
Contiguous: Yes
Permitted: Yes
Wet space: No
Addition: No
Conversion: No

14 Floor 1 - Porch



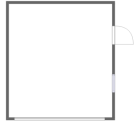
Dimensions: 12'8" x 5'11"
Area: 76 sq. ft
Counted as living area: No

Heated: No
Finished: Yes
Enclosed: No
Contiguous: Yes
Permitted: Yes
Wet space: No
Addition: No
Conversion: No

Home report

214 Country Club Circle, Brevard, Transylvania County, North Carolina, United States, 28712

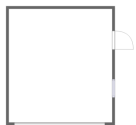
15 Floor 1 - W.I.C.



Dimensions: 3'8" x 6'0"
Area: 22 sq. ft
Counted as living area: Yes

Heated: Yes
Finished: Yes
Enclosed: Yes
Contiguous: Yes
Permitted: Yes
Wet space: No
Addition: No
Conversion: No

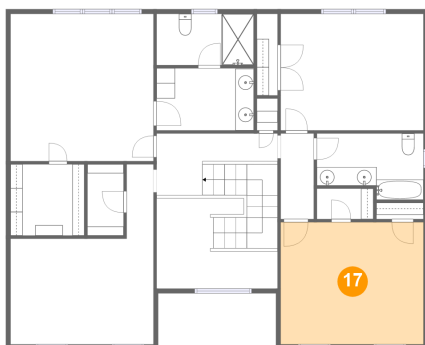
16 Floor 1 - W.I.C.



Dimensions: 3'8" x 6'0"
Area: 22 sq. ft
Counted as living area: Yes

Heated: Yes
Finished: Yes
Enclosed: Yes
Contiguous: Yes
Permitted: Yes
Wet space: No
Addition: No
Conversion: No

17 Floor 2 - Bedroom



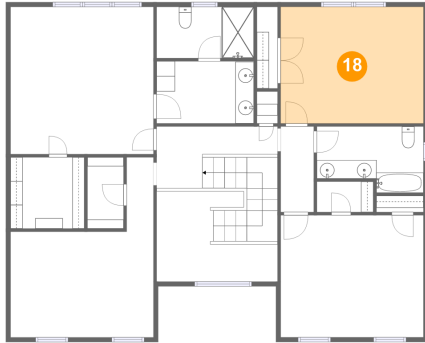
Dimensions: 15'5" x 13'1"
Area: 202 sq. ft
Counted as living area: Yes

Heated: Yes
Finished: Yes
Enclosed: Yes
Contiguous: Yes
Permitted: Yes
Wet space: No
Addition: No
Conversion: No

Home report

214 Country Club Circle, Brevard, Transylvania County, North Carolina, United States, 28712

18 Floor 2 - Bedroom



Dimensions: 15'5" x 12'6"
Area: 193 sq. ft
Counted as living area: Yes

Heated: Yes
Finished: Yes
Enclosed: Yes
Contiguous: Yes
Permitted: Yes
Wet space: No
Addition: No
Conversion: No

19 Floor 2 - W.I.C.



Dimensions: 6'1" x 3'3"
Area: 20 sq. ft
Counted as living area: Yes

Heated: Yes
Finished: Yes
Enclosed: Yes
Contiguous: Yes
Permitted: Yes
Wet space: No
Addition: No
Conversion: No

20 Floor 2 - Hall



Dimensions: 2'11" x 8'0"
Area: 23 sq. ft
Counted as living area: Yes

Heated: Yes
Finished: Yes
Enclosed: Yes
Contiguous: Yes
Permitted: Yes
Wet space: No
Addition: No
Conversion: No

Home report

214 Country Club Circle, Brevard, Transylvania County, North Carolina, United States, 28712

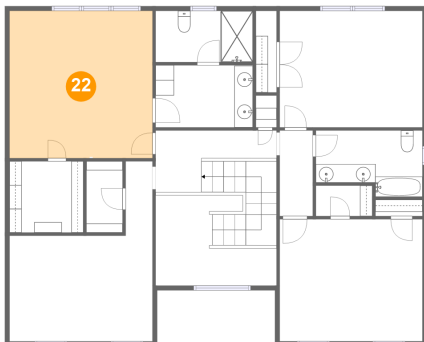
21 Floor 2 - Hall



Dimensions: 3'7" x 9'3"
Area: 33 sq. ft
Counted as living area: Yes

Heated: Yes
Finished: Yes
Enclosed: Yes
Contiguous: Yes
Permitted: Yes
Wet space: No
Addition: No
Conversion: No

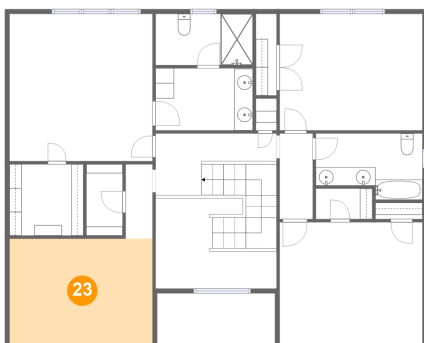
22 Floor 2 - Bedroom



Dimensions: 15'5" x 15'10"
Area: 244 sq. ft
Counted as living area: Yes

Heated: Yes
Finished: Yes
Enclosed: Yes
Contiguous: Yes
Permitted: Yes
Wet space: No
Addition: No
Conversion: No

23 Floor 2 - Bedroom



Dimensions: 15'5" x 11'5"
Area: 175 sq. ft
Counted as living area: Yes

Heated: Yes
Finished: Yes
Enclosed: Yes
Contiguous: Yes
Permitted: Yes
Wet space: No
Addition: No
Conversion: No

Home report

214 Country Club Circle, Brevard, Transylvania County, North Carolina, United States, 28712

24 Floor 2 - Bath



Dimensions: 10'6" x 6'8"
Area: 70 sq. ft
Counted as living area: Yes

Heated: Yes
Finished: Yes
Enclosed: Yes
Contiguous: Yes
Permitted: Yes
Wet space: Yes
Addition: No
Conversion: No

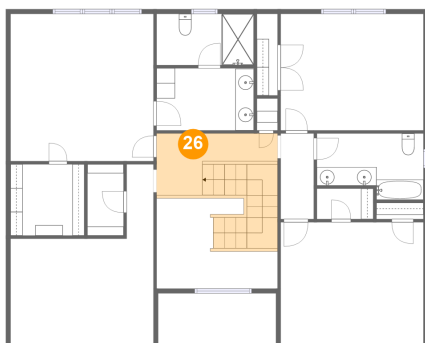
25 Floor 2 - Cl



Dimensions: 3'11" x 7'8"
Area: 30 sq. ft
Counted as living area: Yes

Heated: Yes
Finished: Yes
Enclosed: Yes
Contiguous: Yes
Permitted: Yes
Wet space: No
Addition: No
Conversion: No

26 Floor 2 - Hall



Dimensions: 13'0" x 6'7"
Area: 125 sq. ft
Counted as living area: Yes

Heated: Yes
Finished: Yes
Enclosed: Yes
Contiguous: Yes
Permitted: Yes
Wet space: No
Addition: No
Conversion: No

Home report

214 Country Club Circle, Brevard, Transylvania County, North Carolina, United States, 28712

27 Floor 2 - Bath



Dimensions: 11'6" x 7'1"
Area: 72 sq. ft
Counted as living area: Yes

Heated: Yes
Finished: Yes
Enclosed: Yes
Contiguous: Yes
Permitted: Yes
Wet space: Yes
Addition: No
Conversion: No

28 Floor 2 - W.I.C.



Dimensions: 7'11" x 7'8"
Area: 61 sq. ft
Counted as living area: Yes

Heated: Yes
Finished: Yes
Enclosed: Yes
Contiguous: Yes
Permitted: Yes
Wet space: No
Addition: No
Conversion: No

29 Floor 2 - Open To Below



Dimensions: 13'0" x 9'9"
Area: 93 sq. ft
Counted as living area: No

Heated: No
Finished: No
Enclosed: No
Contiguous: Yes
Permitted: No
Wet space: No
Addition: No
Conversion: No

214 Country Club Circle, Brevard, Transylvania County, North Carolina, United States, 28712

30 Floor 2 - Bath



Dimensions: 10'6" x 5'6"
Area: 58 sq. ft
Counted as living area: Yes

Heated: Yes
Finished: Yes
Enclosed: Yes
Contiguous: Yes
Permitted: Yes
Wet space: Yes
Addition: No
Conversion: No