

# Home data report

## 10513 Dominion Village Dr, Charlotte, NC, US




**Total Area: 2679 sq. ft**

1st Floor: 1135 sq. ft, 2nd Floor: 1544 sq. ft

Excluded: Garage 390 sq. ft, Porch 127 sq. ft, Deck 356 sq. ft, Covered patio 291 sq. ft, Fireplace 13 sq. ft, Walls: 181 sq. ft

### Property summary

 **2** Floors

 **4** Bedrooms

 **2** Bathrooms

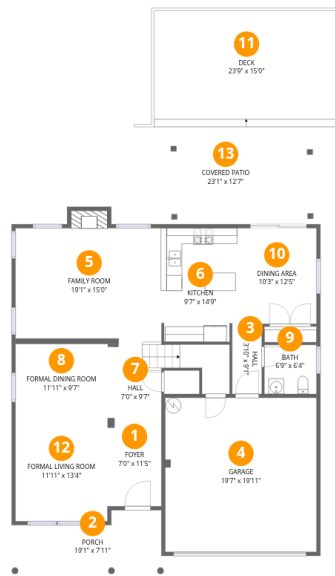
Home data report

# 10513 Dominion Village Dr,Charlotte,NC,US

 **1**  
Half baths

 **1**  
Garages

# 10513 Dominion Village Dr, Charlotte, NC, US



## Room dimensions

Floor 1

Total: 1135 sqft

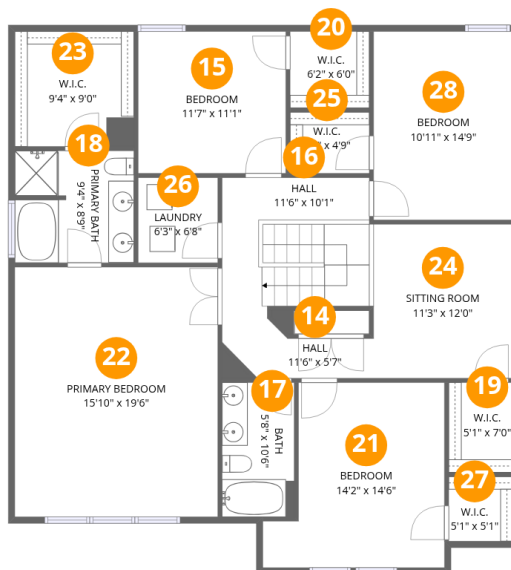
Excluded: 1177 sqft

| #  |                    | Dimensions     | sqft       | Counted as living area |
|----|--------------------|----------------|------------|------------------------|
| 1  | Foyer              | 7'0" x 11'5"   | 80 sq. ft  | Yes                    |
| 2  | Porch              | 19'1" x 7'11"  | 151 sq. ft | No                     |
| 3  | Hall               | 3'10" x 9'1"   | 35 sq. ft  | Yes                    |
| 4  | Garage             | 19'7" x 19'11" | 390 sq. ft | No                     |
| 5  | Family Room        | 19'1" x 15'0"  | 286 sq. ft | Yes                    |
| 6  | Kitchen            | 9'7" x 14'9"   | 141 sq. ft | Yes                    |
| 7  | Hall               | 7'0" x 9'7"    | 67 sq. ft  | Yes                    |
| 8  | Formal Dining Room | 11'11" x 9'7"  | 114 sq. ft | Yes                    |
| 9  | Bath               | 6'9" x 6'4"    | 43 sq. ft  | Yes                    |
| 10 | Dining Area        | 10'3" x 12'5"  | 127 sq. ft | Yes                    |
| 11 | Deck               | 23'9" x 15'0"  | 356 sq. ft | No                     |

Home data report

**10513 Dominion Village Dr,Charlotte,NC,US**

| #  |                    | Dimensions     | sqft       | Counted as living area |
|----|--------------------|----------------|------------|------------------------|
| 12 | Formal Living Room | 11'11" x 13'4" | 159 sq. ft | Yes                    |
| 13 | Covered Patio      | 23'1" x 12'7"  | 290 sq. ft | No                     |



## Room dimensions

Floor 2

Total: 1544 sqft Excluded: 0 sqft

| #  |                 | Dimensions     | sqft       | Counted as living area |
|----|-----------------|----------------|------------|------------------------|
| 14 | Hall            | 11'6" x 5'7"   | 64 sq. ft  | Yes                    |
| 15 | Bedroom         | 11'7" x 11'1"  | 128 sq. ft | Yes                    |
| 16 | Hall            | 11'6" x 10'1"  | 116 sq. ft | Yes                    |
| 17 | Bath            | 5'8" x 10'6"   | 59 sq. ft  | Yes                    |
| 18 | Primary Bath    | 9'4" x 8'9"    | 82 sq. ft  | Yes                    |
| 19 | W.I.C.          | 5'1" x 7'0"    | 35 sq. ft  | Yes                    |
| 20 | W.I.C.          | 6'2" x 6'0"    | 37 sq. ft  | Yes                    |
| 21 | Bedroom         | 14'2" x 14'6"  | 205 sq. ft | Yes                    |
| 22 | Primary Bedroom | 15'10" x 19'6" | 310 sq. ft | Yes                    |
| 23 | W.I.C.          | 9'4" x 9'0"    | 84 sq. ft  | Yes                    |
| 24 | Sitting Room    | 11'3" x 12'0"  | 135 sq. ft | Yes                    |

Home data report

**10513 Dominion Village Dr,Charlotte,NC,US**

| #  |         | Dimensions     | sqft       | Counted as living area |
|----|---------|----------------|------------|------------------------|
| 25 | W.I.C.  | 6'2" x 4'9"    | 30 sq. ft  | Yes                    |
| 26 | Laundry | 6'3" x 6'8"    | 41 sq. ft  | Yes                    |
| 27 | W.I.C.  | 5'1" x 5'1"    | 25 sq. ft  | Yes                    |
| 28 | Bedroom | 10'11" x 14'9" | 161 sq. ft | Yes                    |

## 1 Floor 1 - Foyer



Dimensions: 7'0" x 11'5"  
Area: 80 sq. ft  
Counted as living area: Yes

Heated: Yes  
Finished: Yes  
Enclosed: Yes  
Contiguous: Yes  
Permitted: Yes  
Wet space: No  
Addition: No  
Conversion: No

## 2 Floor 1 - Porch



Dimensions: 19'1" x 7'11"  
Area: 151 sq. ft  
Counted as living area: No

Heated: No  
Finished: No  
Enclosed: No  
Contiguous: Yes  
Permitted: Yes  
Wet space: No  
Addition: No  
Conversion: No

### 3 Floor 1 - Hall



Dimensions: 3'10" x 9'1"  
Area: 35 sq. ft  
Counted as living area: Yes

Heated: Yes  
Finished: Yes  
Enclosed: Yes  
Contiguous: Yes  
Permitted: Yes  
Wet space: No  
Addition: No  
Conversion: No

### 4 Floor 1 - Garage



Dimensions: 19'7" x 19'11"  
Area: 390 sq. ft  
Counted as living area: No

Heated: No  
Finished: No  
Enclosed: Yes  
Contiguous: Yes  
Permitted: Yes  
Wet space: No  
Addition: No  
Conversion: No

### 5 Floor 1 - Family Room



Dimensions: 19'1" x 15'0"  
Area: 286 sq. ft  
Counted as living area: Yes

Heated: Yes  
Finished: Yes  
Enclosed: Yes  
Contiguous: Yes  
Permitted: Yes  
Wet space: No  
Addition: No  
Conversion: No



## 6 Floor 1 - Kitchen



Dimensions: 9'7" x 14'9"  
Area: 141 sq. ft  
Counted as living area: Yes

Heated: Yes  
Finished: Yes  
Enclosed: Yes  
Contiguous: Yes  
Permitted: Yes  
Wet space: No  
Addition: No  
Conversion: No

## 7 Floor 1 - Hall



Dimensions: 7'0" x 9'7"  
Area: 67 sq. ft  
Counted as living area: Yes

Heated: Yes  
Finished: Yes  
Enclosed: Yes  
Contiguous: Yes  
Permitted: Yes  
Wet space: No  
Addition: No  
Conversion: No

## 8 Floor 1 - Formal Dining Room



Dimensions: 11'11" x 9'7"  
Area: 114 sq. ft  
Counted as living area: Yes

Heated: Yes  
Finished: Yes  
Enclosed: Yes  
Contiguous: Yes  
Permitted: Yes  
Wet space: No  
Addition: No  
Conversion: No

### 9 Floor 1 - Bath



Dimensions: 6'9" x 6'4"  
Area: 43 sq. ft  
Counted as living area: Yes

Heated: Yes  
Finished: Yes  
Enclosed: Yes  
Contiguous: Yes  
Permitted: Yes  
Wet space: Yes  
Addition: No  
Conversion: No

### 10 Floor 1 - Dining Area



Dimensions: 10'3" x 12'5"  
Area: 127 sq. ft  
Counted as living area: Yes

Heated: Yes  
Finished: Yes  
Enclosed: Yes  
Contiguous: Yes  
Permitted: Yes  
Wet space: No  
Addition: No  
Conversion: No

### 11 Floor 1 - Deck



Dimensions: 23'9" x 15'0"  
Area: 356 sq. ft  
Counted as living area: No

Heated: No  
Finished: No  
Enclosed: No  
Contiguous: Yes  
Permitted: Yes  
Wet space: No  
Addition: No  
Conversion: No

## 12 Floor 1 - Formal Living Room



Dimensions: 11'11" x 13'4"  
Area: 159 sq. ft  
Counted as living area: Yes

Heated: Yes  
Finished: Yes  
Enclosed: Yes  
Contiguous: Yes  
Permitted: Yes  
Wet space: No  
Addition: No  
Conversion: No

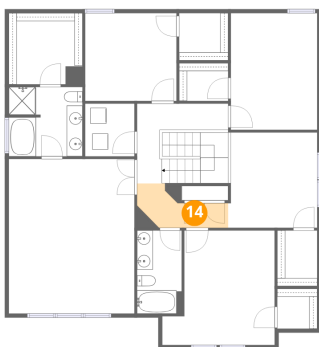
## 13 Floor 1 - Covered Patio



Dimensions: 23'1" x 12'7"  
Area: 290 sq. ft  
Counted as living area: No

Heated: No  
Finished: No  
Enclosed: No  
Contiguous: Yes  
Permitted: Yes  
Wet space: No  
Addition: No  
Conversion: No

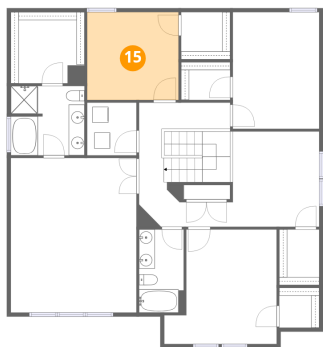
## 14 Floor 2 - Hall



Dimensions: 11'6" x 5'7"  
Area: 64 sq. ft  
Counted as living area: Yes

Heated: Yes  
Finished: Yes  
Enclosed: Yes  
Contiguous: Yes  
Permitted: Yes  
Wet space: No  
Addition: No  
Conversion: No

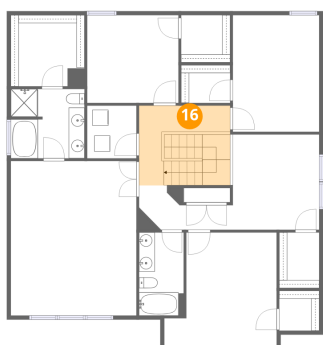
**15** Floor 2 - Bedroom



Dimensions: 11'7" x 11'1"  
Area: 128 sq. ft  
Counted as living area: Yes

Heated: Yes  
Finished: Yes  
Enclosed: Yes  
Contiguous: Yes  
Permitted: Yes  
Wet space: No  
Addition: No  
Conversion: No

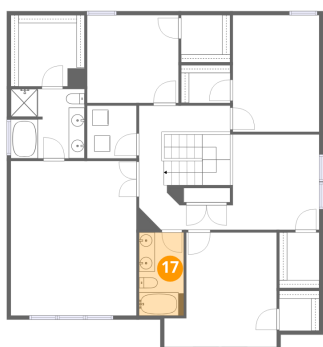
**16** Floor 2 - Hall



Dimensions: 11'6" x 10'1"  
Area: 116 sq. ft  
Counted as living area: Yes

Heated: Yes  
Finished: Yes  
Enclosed: Yes  
Contiguous: Yes  
Permitted: Yes  
Wet space: No  
Addition: No  
Conversion: No

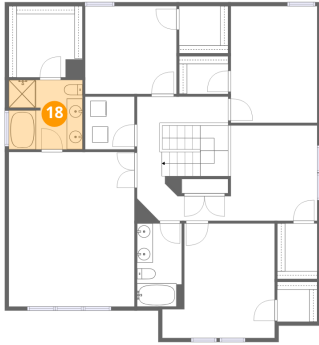
**17** Floor 2 - Bath



Dimensions: 5'8" x 10'6"  
Area: 59 sq. ft  
Counted as living area: Yes

Heated: Yes  
Finished: Yes  
Enclosed: Yes  
Contiguous: Yes  
Permitted: Yes  
Wet space: Yes  
Addition: No  
Conversion: No

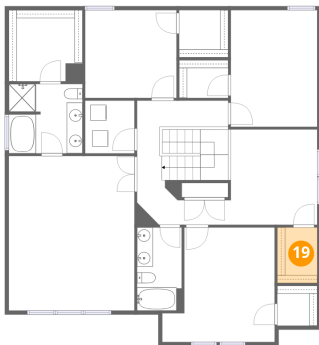
**18** Floor 2 - Primary Bath



Dimensions: 9'4" x 8'9"  
Area: 82 sq. ft  
Counted as living area: Yes

Heated: Yes  
Finished: Yes  
Enclosed: Yes  
Contiguous: Yes  
Permitted: Yes  
Wet space: Yes  
Addition: No  
Conversion: No

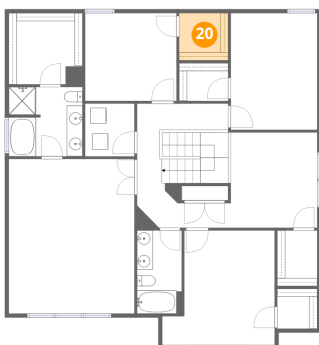
**19** Floor 2 - W.I.C.



Dimensions: 5'1" x 7'0"  
Area: 35 sq. ft  
Counted as living area: Yes

Heated: Yes  
Finished: Yes  
Enclosed: Yes  
Contiguous: Yes  
Permitted: Yes  
Wet space: No  
Addition: No  
Conversion: No

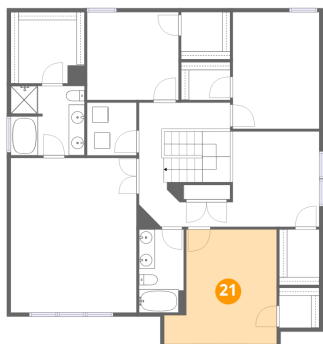
**20** Floor 2 - W.I.C.



Dimensions: 6'2" x 6'0"  
Area: 37 sq. ft  
Counted as living area: Yes

Heated: Yes  
Finished: Yes  
Enclosed: Yes  
Contiguous: Yes  
Permitted: Yes  
Wet space: No  
Addition: No  
Conversion: No

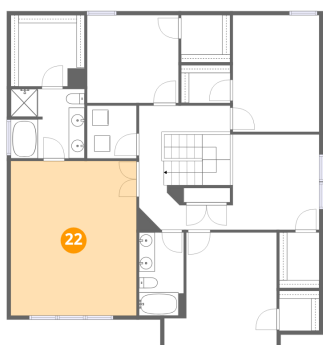
### 21 Floor 2 - Bedroom



Dimensions: 14'2" x 14'6"  
Area: 205 sq. ft  
Counted as living area: Yes

Heated: Yes  
Finished: Yes  
Enclosed: Yes  
Contiguous: Yes  
Permitted: Yes  
Wet space: No  
Addition: No  
Conversion: No

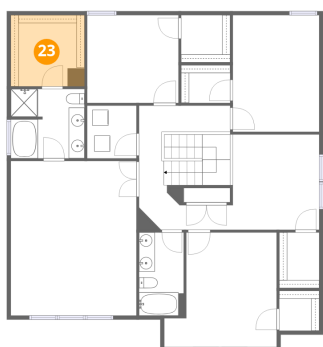
### 22 Floor 2 - Primary Bedroom



Dimensions: 15'10" x 19'6"  
Area: 310 sq. ft  
Counted as living area: Yes

Heated: Yes  
Finished: Yes  
Enclosed: Yes  
Contiguous: Yes  
Permitted: Yes  
Wet space: No  
Addition: No  
Conversion: No

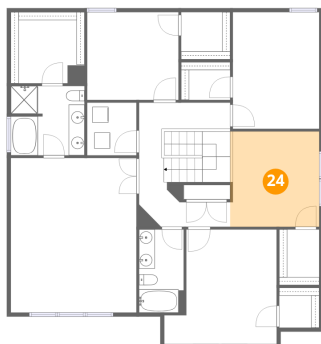
### 23 Floor 2 - W.I.C.



Dimensions: 9'4" x 9'0"  
Area: 84 sq. ft  
Counted as living area: Yes

Heated: Yes  
Finished: Yes  
Enclosed: Yes  
Contiguous: Yes  
Permitted: Yes  
Wet space: No  
Addition: No  
Conversion: No

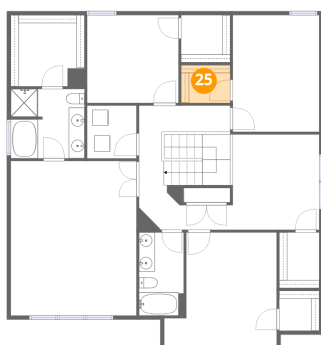
**24** Floor 2 - Sitting Room



Dimensions: 11'3" x 12'0"  
Area: 135 sq. ft  
Counted as living area: Yes

Heated: Yes  
Finished: Yes  
Enclosed: Yes  
Contiguous: Yes  
Permitted: Yes  
Wet space: No  
Addition: No  
Conversion: No

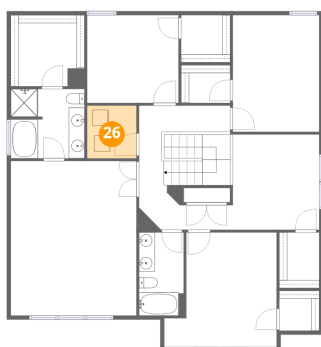
**25** Floor 2 - W.I.C.



Dimensions: 6'2" x 4'9"  
Area: 30 sq. ft  
Counted as living area: Yes

Heated: Yes  
Finished: Yes  
Enclosed: Yes  
Contiguous: Yes  
Permitted: Yes  
Wet space: No  
Addition: No  
Conversion: No

**26** Floor 2 - Laundry

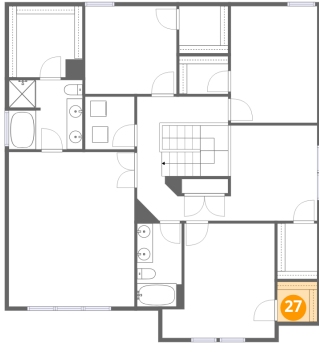


Dimensions: 6'3" x 6'8"  
Area: 41 sq. ft  
Counted as living area: Yes

Heated: Yes  
Finished: Yes  
Enclosed: Yes  
Contiguous: Yes  
Permitted: Yes  
Wet space: No  
Addition: No  
Conversion: No

**27** Floor 2 - W.I.C.

---

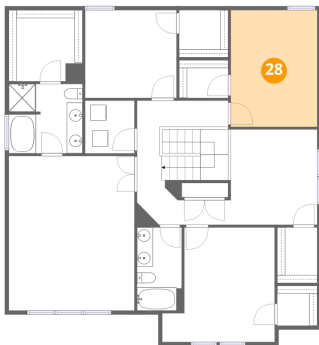


Dimensions: 5'1" x 5'1"  
Area: 25 sq. ft  
Counted as living area: Yes

Heated: Yes  
Finished: Yes  
Enclosed: Yes  
Contiguous: Yes  
Permitted: Yes  
Wet space: No  
Addition: No  
Conversion: No

**28** Floor 2 - Bedroom

---



Dimensions: 10'11" x 14'9"  
Area: 161 sq. ft  
Counted as living area: Yes

Heated: Yes  
Finished: Yes  
Enclosed: Yes  
Contiguous: Yes  
Permitted: Yes  
Wet space: No  
Addition: No  
Conversion: No