



Home report


805 Progress Ct,Newport News,VA,US




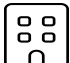
Property summary


 **1** Garages


 **4** Bedrooms

 **2** Bathrooms

 **1** Half baths

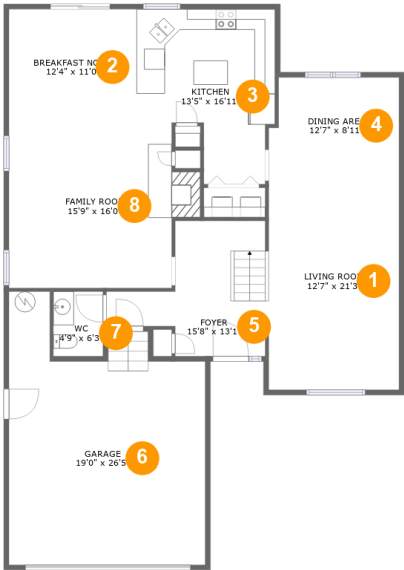
 **2** Floors

 **2,436** Gross living area sqft

 **2,904** Total sqft

Home report

805 Progress Ct,Newport News,VA,US



Room dimensions

Floor 1Total sqft: 1708    Living area: 1263

#		Dimensions	sqft	Counted as living area
1	Living Room	12'7" x 21'3"	268 sq. ft	Yes
2	Breakfast Nook	12'4" x 11'0"	136 sq. ft	Yes
3	Kitchen	13'5" x 16'11"	183 sq. ft	Yes
4	Dining Area	12'7" x 8'11"	108 sq. ft	Yes
5	Foyer	15'8" x 13'1"	139 sq. ft	Yes
6	Garage	19'0" x 26'5"	412 sq. ft	No
7	WC	4'9" x 6'3"	30 sq. ft	Yes
8	Family Room	15'9" x 16'0"	264 sq. ft	Yes

Home report

805 Progress Ct,Newport News,VA,US

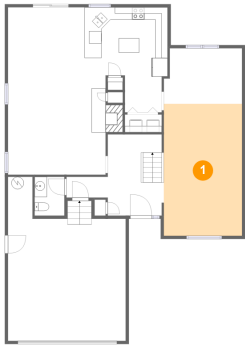


Room dimensions

Floor 2 Total sqft: 1196 Living area: 1173

#		Dimensions	sqft	Counted as living area
9	Bedroom	12'1" x 10'7"	128 sq. ft	Yes
10	W.I.C.	3'10" x 8'10"	34 sq. ft	Yes
11	Bedroom	11'9" x 12'10"	150 sq. ft	Yes
12	Primary Bath	9'11" x 11'8"	115 sq. ft	Yes
13	Primary Bedroom	15'6" x 15'11"	218 sq. ft	Yes
14	Bath	8'11" x 5'4"	48 sq. ft	Yes
15	W.I.C.	6'9" x 7'11"	53 sq. ft	Yes
16	Open To Below	5'5" x 4'2"	23 sq. ft	No
17	Hall	3'8" x 21'5"	113 sq. ft	Yes
18	Bedroom	12'1" x 10'6"	127 sq. ft	Yes

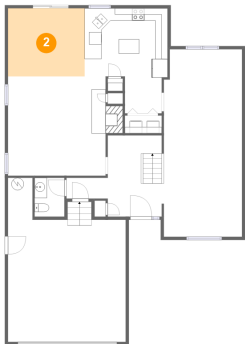
1 Floor 1 - Living Room



Dimensions: 12'7" x 21'3"  
Area: 268 sq. ft  
Counted as living area: Yes

Heated: Yes  
Finished: Yes  
Enclosed: Yes  
Contiguous: Yes  
Permitted: Yes  
Wet space: No  
Addition: No  
Conversion: No

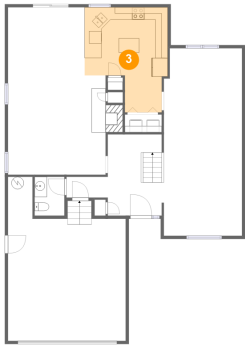
2 Floor 1 - Breakfast Nook



Dimensions: 12'4" x 11'0"  
Area: 136 sq. ft  
Counted as living area: Yes

Heated: Yes  
Finished: Yes  
Enclosed: Yes  
Contiguous: Yes  
Permitted: Yes  
Wet space: No  
Addition: No  
Conversion: No

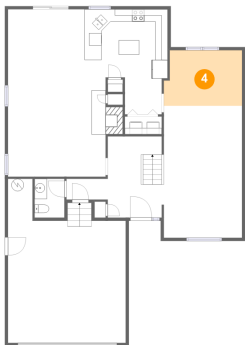
3 Floor 1 - Kitchen



Dimensions: 13'5" x 16'11"  
Area: 183 sq. ft  
Counted as living area: Yes

Heated: Yes  
Finished: Yes  
Enclosed: Yes  
Contiguous: Yes  
Permitted: Yes  
Wet space: No  
Addition: No  
Conversion: No

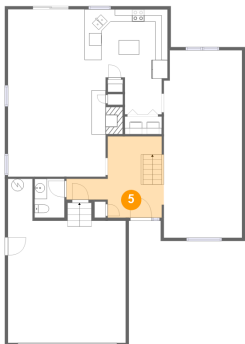
4 Floor 1 - Dining Area



Dimensions: 12'7" x 8'11"  
Area: 108 sq. ft  
Counted as living area: Yes

Heated: Yes  
Finished: Yes  
Enclosed: Yes  
Contiguous: Yes  
Permitted: Yes  
Wet space: No  
Addition: No  
Conversion: No

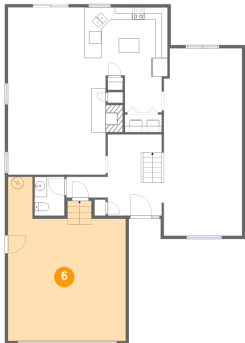
5 Floor 1 - Foyer



Dimensions: 15'8" x 13'1"  
Area: 139 sq. ft  
Counted as living area: Yes

Heated: Yes  
Finished: Yes  
Enclosed: Yes  
Contiguous: Yes  
Permitted: Yes  
Wet space: No  
Addition: No  
Conversion: No

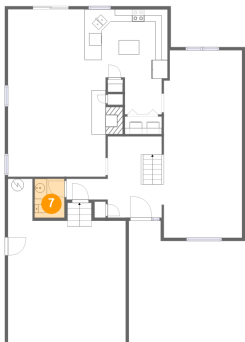
6 Floor 1 - Garage



Dimensions: 19'0" x 26'5"  
Area: 412 sq. ft  
Counted as living area: No

Heated: No  
Finished: No  
Enclosed: Yes  
Contiguous: Yes  
Permitted: Yes  
Wet space: No  
Addition: No  
Conversion: No

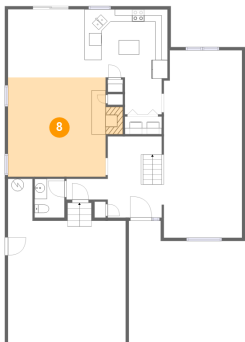
7 Floor 1 - WC



Dimensions: 4'9" x 6'3"  
Area: 30 sq. ft  
Counted as living area: Yes

Heated: Yes  
Finished: Yes  
Enclosed: Yes  
Contiguous: Yes  
Permitted: Yes  
Wet space: No  
Addition: No  
Conversion: No

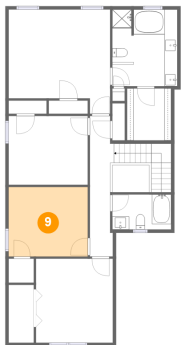
8 Floor 1 - Family Room



Dimensions: 15'9" x 16'0"  
Area: 264 sq. ft  
Counted as living area: Yes

Heated: Yes  
Finished: Yes  
Enclosed: Yes  
Contiguous: Yes  
Permitted: Yes  
Wet space: No  
Addition: No  
Conversion: No

9 Floor 2 - Bedroom



Dimensions: 12'1" x 10'7"  
Area: 128 sq. ft  
Counted as living area: Yes

Heated: Yes  
Finished: Yes  
Enclosed: Yes  
Contiguous: Yes  
Permitted: Yes  
Wet space: No  
Addition: No  
Conversion: No

10 Floor 2 - W.I.C.



Dimensions: 3'10" x 8'10"  
Area: 34 sq. ft  
Counted as living area: Yes

Heated: Yes  
Finished: Yes  
Enclosed: Yes  
Contiguous: Yes  
Permitted: Yes  
Wet space: No  
Addition: No  
Conversion: No

11 Floor 2 - Bedroom



Dimensions: 11'9" x 12'10"  
Area: 150 sq. ft  
Counted as living area: Yes

Heated: Yes  
Finished: Yes  
Enclosed: Yes  
Contiguous: Yes  
Permitted: Yes  
Wet space: No  
Addition: No  
Conversion: No

12 Floor 2 - Primary Bath



Dimensions: 9'11" x 11'8"  
Area: 115 sq. ft  
Counted as living area: Yes

Heated: Yes  
Finished: Yes  
Enclosed: Yes  
Contiguous: Yes  
Permitted: Yes  
Wet space: Yes  
Addition: No  
Conversion: No

13 Floor 2 - Primary Bedroom



Dimensions: 15'6" x 15'11"  
Area: 218 sq. ft  
Counted as living area: Yes

Heated: Yes  
Finished: Yes  
Enclosed: Yes  
Contiguous: Yes  
Permitted: Yes  
Wet space: No  
Addition: No  
Conversion: No

14 Floor 2 - Bath

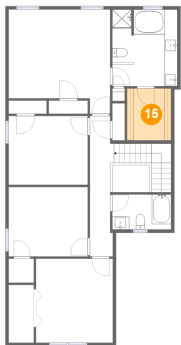


Dimensions: 8'11" x 5'4"  
Area: 48 sq. ft  
Counted as living area: Yes

Heated: Yes  
Finished: Yes  
Enclosed: Yes  
Contiguous: Yes  
Permitted: Yes  
Wet space: Yes  
Addition: No  
Conversion: No



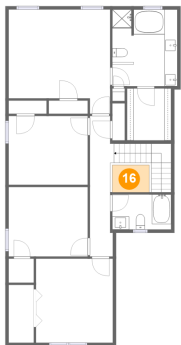
15 Floor 2 - W.I.C.



Dimensions: 6'9" x 7'11"  
Area: 53 sq. ft  
Counted as living area: Yes

Heated: Yes  
Finished: Yes  
Enclosed: Yes  
Contiguous: Yes  
Permitted: Yes  
Wet space: No  
Addition: No  
Conversion: No

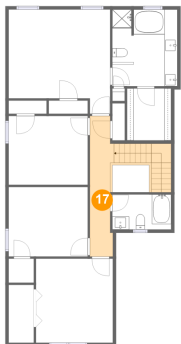
16 Floor 2 - Open To Below



Dimensions: 5'5" x 4'2"  
Area: 23 sq. ft  
Counted as living area: No

Heated: No  
Finished: No  
Enclosed: No  
Contiguous: Yes  
Permitted: No  
Wet space: No  
Addition: No  
Conversion: No

17 Floor 2 - Hall



Dimensions: 3'8" x 21'5"  
Area: 113 sq. ft  
Counted as living area: Yes

Heated: Yes  
Finished: Yes  
Enclosed: Yes  
Contiguous: Yes  
Permitted: Yes  
Wet space: No  
Addition: No  
Conversion: No

18 Floor 2 - Bedroom



Dimensions: 12'1" x 10'6"  
Area: 127 sq. ft  
Counted as living area: Yes

Heated: Yes  
Finished: Yes  
Enclosed: Yes  
Contiguous: Yes  
Permitted: Yes  
Wet space: No  
Addition: No  
Conversion: No