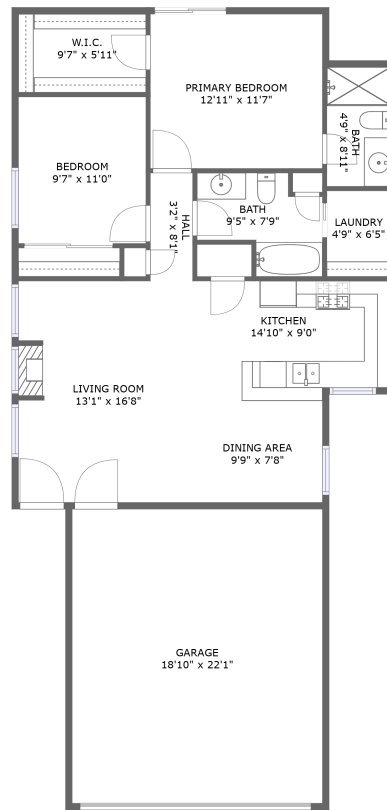



# 5955 Townsend Pl, Cheyenne, WY, US



FLOOR 1

## Property summary

 **1** Garages

 **2** Bedrooms

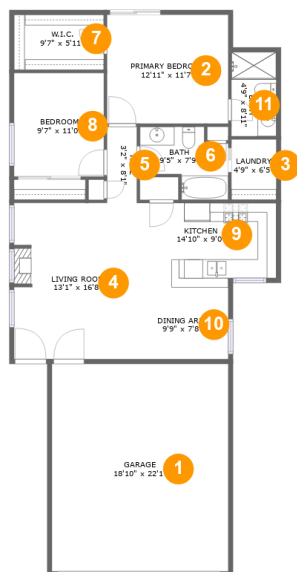
 **2** Bathrooms

 **0** Half baths

 **1** Floors

 **1,021**  
Gross living  
area sqft

 **1,469**  
Total sqft

**5955 Townsend Pl, Cheyenne, WY, US****Room dimensions**

Floor 1

Total sqft: 1469 Living area: 1021

#		Dimensions	sqft	Counted as living area
1	Garage	18'10" x 22'1"	416 sq. ft	No
2	Primary Bedroom	12'11" x 11'7"	150 sq. ft	Yes
3	Laundry	4'9" x 6'5"	31 sq. ft	Yes
4	Living Room	13'1" x 16'8"	216 sq. ft	Yes
5	Hall	3'2" x 8'1"	26 sq. ft	Yes
6	Bath	9'5" x 7'9"	57 sq. ft	Yes
7	W.I.C.	9'7" x 5'11"	56 sq. ft	Yes
8	Bedroom	9'7" x 11'0"	105 sq. ft	Yes
9	Kitchen	14'10" x 9'0"	129 sq. ft	Yes
10	Dining Area	9'9" x 7'8"	75 sq. ft	Yes
11	Bath	4'9" x 8'11"	43 sq. ft	Yes

# 5955 Townsend Pl, Cheyenne, WY, US

## 1 Floor 1 - Garage



**Dimensions:** 18'10" x 22'1"  
**Area:** 416 sq. ft  
**Counted as living area:** No

**Heated:** No  
**Finished:** No  
**Enclosed:** Yes  
**Contiguous:** Yes  
**Permitted:** Yes  
**Wet space:** No  
**Addition:** No  
**Conversion:** No

## 2 Floor 1 - Primary Bedroom



**Dimensions:** 12'11" x 11'7"  
**Area:** 150 sq. ft  
**Counted as living area:** Yes

**Heated:** Yes  
**Finished:** Yes  
**Enclosed:** Yes  
**Contiguous:** Yes  
**Permitted:** Yes  
**Wet space:** No  
**Addition:** No  
**Conversion:** No

# 5955 Townsend Pl, Cheyenne, WY, US

## 3 Floor 1 - Laundry



Dimensions: 4'9" x 6'5"  
Area: 31 sq. ft  
Counted as living area: Yes

Heated: Yes  
Finished: Yes  
Enclosed: Yes  
Contiguous: Yes  
Permitted: Yes  
Wet space: No  
Addition: No  
Conversion: No

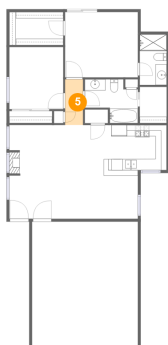
## 4 Floor 1 - Living Room



Dimensions: 13'1" x 16'8"  
Area: 216 sq. ft  
Counted as living area: Yes

Heated: Yes  
Finished: Yes  
Enclosed: Yes  
Contiguous: Yes  
Permitted: Yes  
Wet space: No  
Addition: No  
Conversion: No

## 5 Floor 1 - Hall



Dimensions: 3'2" x 8'1"  
Area: 26 sq. ft  
Counted as living area: Yes

Heated: Yes  
Finished: Yes  
Enclosed: Yes  
Contiguous: Yes  
Permitted: Yes  
Wet space: No  
Addition: No  
Conversion: No

# 5955 Townsend Pl, Cheyenne, WY, US

## 6 Floor 1 - Bath



Dimensions: 9'5" x 7'9"  
Area: 57 sq. ft  
Counted as living area: Yes

Heated: Yes  
Finished: Yes  
Enclosed: Yes  
Contiguous: Yes  
Permitted: Yes  
Wet space: Yes  
Addition: No  
Conversion: No

## 7 Floor 1 - W.I.C.



Dimensions: 9'7" x 5'11"  
Area: 56 sq. ft  
Counted as living area: Yes

Heated: Yes  
Finished: Yes  
Enclosed: Yes  
Contiguous: Yes  
Permitted: Yes  
Wet space: No  
Addition: No  
Conversion: No

## 8 Floor 1 - Bedroom



Dimensions: 9'7" x 11'0"  
Area: 105 sq. ft  
Counted as living area: Yes

Heated: Yes  
Finished: Yes  
Enclosed: Yes  
Contiguous: Yes  
Permitted: Yes  
Wet space: No  
Addition: No  
Conversion: No

# 5955 Townsend Pl, Cheyenne, WY, US

## 9 Floor 1 - Kitchen



**Dimensions:** 14'10" x 9'0"  
**Area:** 129 sq. ft  
**Counted as living area:** Yes

**Heated:** Yes  
**Finished:** Yes  
**Enclosed:** Yes  
**Contiguous:** Yes  
**Permitted:** Yes  
**Wet space:** No  
**Addition:** No  
**Conversion:** No

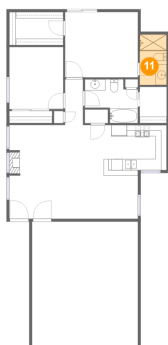
## 10 Floor 1 - Dining Area



**Dimensions:** 9'9" x 7'8"  
**Area:** 75 sq. ft  
**Counted as living area:** Yes

**Heated:** Yes  
**Finished:** Yes  
**Enclosed:** Yes  
**Contiguous:** Yes  
**Permitted:** Yes  
**Wet space:** No  
**Addition:** No  
**Conversion:** No

## 11 Floor 1 - Bath



**Dimensions:** 4'9" x 8'11"  
**Area:** 43 sq. ft  
**Counted as living area:** Yes

**Heated:** Yes  
**Finished:** Yes  
**Enclosed:** Yes  
**Contiguous:** Yes  
**Permitted:** Yes  
**Wet space:** Yes  
**Addition:** No  
**Conversion:** No