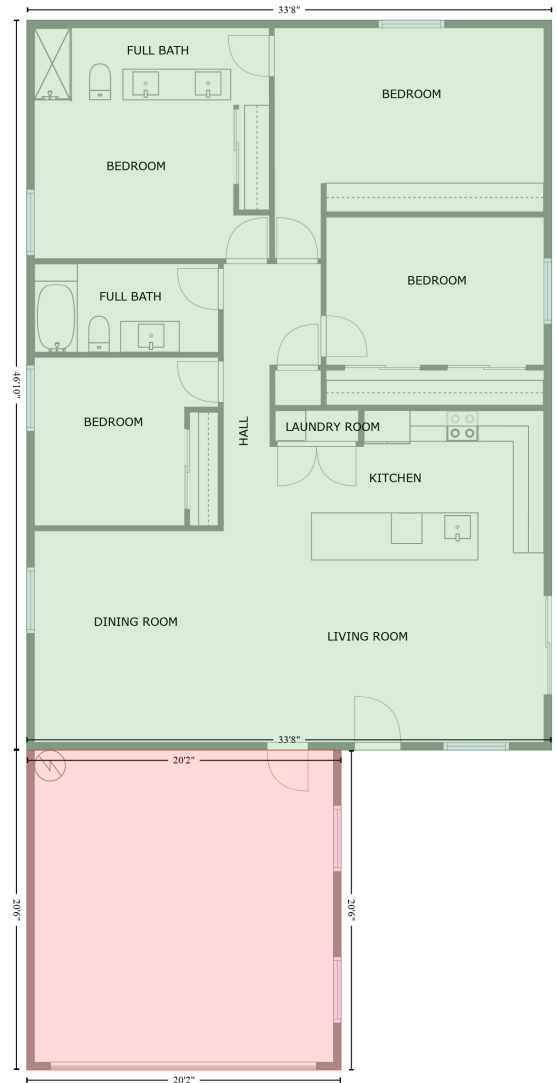


906 15th Avenue Northwest, Archwood - South Haven, Largo, Pinellas County, Florida,
United States, 33770

Gross Living Area: 1577 sq. ft

FLOOR 1
[AREA: 1577]



GARAGE (1)
[AREA: 414]

Space	Area (sq. ft)	Calculation <small>Coordinate Polygon Area Algorithm using inches</small>
FLOOR 1 (Living area)	1577	$-((405.2 + 405.2) * (-3.2 - 558.4) + (405.2 + 0.8) * (558.4 - 558.4) + (0.8 + 0.8) * (558.4 - -3.2) + (0.8 + 405.2) * (-3.2 - -3.2)) * 0.5 * 0.00694$
GARAGE (Non-living area)	414	$-((243 + 243) * (558.4 - 804.4) + (243 + 0.8) * (804.4 - 804.4) + (0.8 + 0.8) * (804.4 - 558.4) + (0.8 + 243) * (558.4 - 558.4)) * 0.5 * 0.00694$