

Home report

291 Dug Hill Road, Ryland Acres, Brownsboro, Madison County, Alabama, United States, 35741



**Total GLA: 4928 sq. ft**

Floor 1: 2678 sq. ft, Floor 2: 2250 sq. ft

Excluded: Garage 1473 sq. ft, Porch 279 sq. ft, Covered patio 338 sq. ft, Patio 1030 sq. ft, Open to below 654 sq. ft, Low ceiling 132 sq. ft, Storage 16 sq. ft

Property summary

**2** Floors

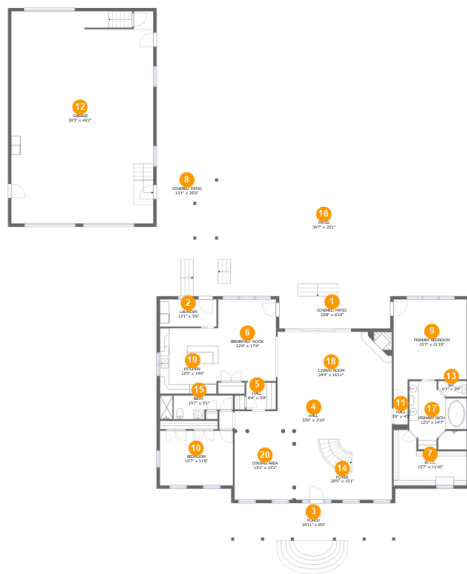
**4** Bedrooms

**4** Bathrooms

**1** Garages

Home report

291 Dug Hill Road, Ryland Acres, Brownsboro, Madison County, Alabama, United States, 35741



Room dimensions

Floor 1 Total:2678sqft Excluded: 3120sqft

#		Max Dimensions	sqft	Included
1	Covered Patio	23'8" x 6'10"	162 sq. ft	No
2	Laundry	12'1" x 5'9"	70 sq. ft	Yes
3	Porch	34'11" x 8'0"	279 sq. ft	No
4	Hall	33'6" x 3'10"	129 sq. ft	Yes
5	Hall	6'4" x 5'9"	36 sq. ft	Yes
6	Breakfast Nook	12'4" x 17'4"	214 sq. ft	Yes
7	W.I.C.	15'7" x 11'10"	137 sq. ft	Yes
8	Covered Patio	13'1" x 25'0"	176 sq. ft	No
9	Primary Bedroom	15'7" x 21'10"	280 sq. ft	Yes
10	Bedroom	15'7" x 11'8"	181 sq. ft	Yes
11	Hall	3'0" x 4'5"	13 sq. ft	Yes

## Home report

**291 Dug Hill Road, Ryland Acres, Brownsboro, Madison County, Alabama, United States, 35741**

#		Max Dimensions	sqft	Included
12	Garage	30'3" x 45'2"	1362 sq. ft	No
13	WC	6'1" x 3'4"	19 sq. ft	Yes
14	Foyer	20'5" x 15'1"	307 sq. ft	Yes
15	Bath	15'7" x 5'1"	66 sq. ft	Yes
16	Patio	39'7" x 25'1"	1030 sq. ft	No
17	Primary Bath	12'3" x 14'7"	148 sq. ft	Yes
18	Living Room	24'4" x 16'11"	411 sq. ft	Yes
19	Kitchen	12'5" x 14'0"	172 sq. ft	Yes
20	Dining Area	13'1" x 15'1"	197 sq. ft	Yes

Home report

291 Dug Hill Road, Ryland Acres, Brownsboro, Madison County, Alabama, United States, 35741



Room dimensions

Floor 2 Total:2250sqft Excluded: 802sqft

#		Max Dimensions	sqft	Included
21	Hall	3'0" x 6'10"	21 sq. ft	Yes
22	Kitchenette	12'3" x 13'4"	191 sq. ft	Yes
23	Bedroom	15'7" x 18'11"	270 sq. ft	Yes
24	Open To Below	24'4" x 15'11"	388 sq. ft	No
25	Hall	3'1" x 7'4"	23 sq. ft	Yes
26	Open To Below	20'5" x 14'9"	220 sq. ft	No
27	Bath	5'0" x 8'8"	49 sq. ft	Yes
28	Bedroom	21'3" x 18'11"	351 sq. ft	Yes
29	Recreation Room	23'0" x 31'10"	680 sq. ft	Yes
30	Storage	5'6" x 12'1"	15 sq. ft	No
31	Bath	5'10" x 9'2"	53 sq. ft	Yes

Home report

291 Dug Hill Road, Ryland Acres, Brownsboro, Madison County,  
Alabama, United States, 35741

#		Max Dimensions	sqft	Included
32	Hall	24'4" x 5'7"	204 sq. ft	Yes
33	Office	12'7" x 14'9"	172 sq. ft	Yes

1 Floor 1 - Covered Patio



Max Dimensions: 23'8" x 6'10"  
Calculated Area: 162 sq. ft  
Included: No

Heated: No  
Finished: Yes  
Enclosed: No  
Contiguous: Yes  
Permitted: Yes  
Wet space: No  
Addition: No  
Conversion: No

2 Floor 1 - Laundry



Max Dimensions: 12'1" x 5'9"  
Calculated Area: 70 sq. ft  
Included: Yes

Heated: Yes  
Finished: Yes  
Enclosed: Yes  
Contiguous: Yes  
Permitted: Yes  
Wet space: No  
Addition: No  
Conversion: No

291 Dug Hill Road, Ryland Acres, Brownsboro, Madison County, Alabama, United States, 35741

3 Floor 1 - Porch



Max Dimensions: 34'11" x 8'0"  
Calculated Area: 279 sq. ft  
Included: No

Heated: No  
Finished: Yes  
Enclosed: No  
Contiguous: Yes  
Permitted: Yes  
Wet space: No  
Addition: No  
Conversion: No

4 Floor 1 - Hall



Max Dimensions: 33'6" x 3'10"  
Calculated Area: 129 sq. ft  
Included: Yes

Heated: Yes  
Finished: Yes  
Enclosed: Yes  
Contiguous: Yes  
Permitted: Yes  
Wet space: No  
Addition: No  
Conversion: No

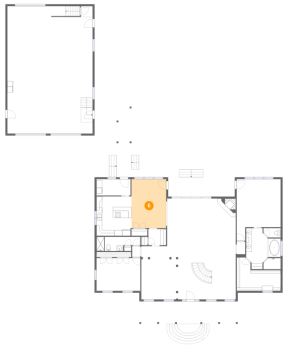
5 Floor 1 - Hall



Max Dimensions: 6'4" x 5'9"  
Calculated Area: 36 sq. ft  
Included: Yes

Heated: Yes  
Finished: Yes  
Enclosed: Yes  
Contiguous: Yes  
Permitted: Yes  
Wet space: No  
Addition: No  
Conversion: No

6 Floor 1 - Breakfast Nook



Max Dimensions: 12'4" x 17'4"  
Calculated Area: 214 sq. ft  
Included: Yes

Heated: Yes  
Finished: Yes  
Enclosed: Yes  
Contiguous: Yes  
Permitted: Yes  
Wet space: No  
Addition: No  
Conversion: No

7 Floor 1 - W.I.C.



Max Dimensions: 15'7" x 11'10"  
Calculated Area: 137 sq. ft  
Included: Yes

Heated: Yes  
Finished: Yes  
Enclosed: Yes  
Contiguous: Yes  
Permitted: Yes  
Wet space: No  
Addition: No  
Conversion: No

8 Floor 1 - Covered Patio



Max Dimensions: 13'1" x 25'0"  
Calculated Area: 176 sq. ft  
Included: No

Heated: No  
Finished: Yes  
Enclosed: No  
Contiguous: Yes  
Permitted: Yes  
Wet space: No  
Addition: No  
Conversion: No



9 Floor 1 - Primary Bedroom



Max Dimensions: 15'7" x 21'10"  
Calculated Area: 280 sq. ft  
Included: Yes

Heated: Yes  
Finished: Yes  
Enclosed: Yes  
Contiguous: Yes  
Permitted: Yes  
Wet space: No  
Addition: No  
Conversion: No

10 Floor 1 - Bedroom



Max Dimensions: 15'7" x 11'8"  
Calculated Area: 181 sq. ft  
Included: Yes

Heated: Yes  
Finished: Yes  
Enclosed: Yes  
Contiguous: Yes  
Permitted: Yes  
Wet space: No  
Addition: No  
Conversion: No

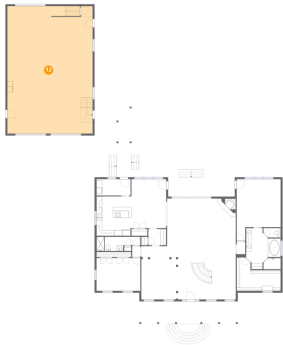
11 Floor 1 - Hall



Max Dimensions: 3'0" x 4'5"  
Calculated Area: 13 sq. ft  
Included: Yes

Heated: Yes  
Finished: Yes  
Enclosed: Yes  
Contiguous: Yes  
Permitted: Yes  
Wet space: No  
Addition: No  
Conversion: No

12 Floor 1 - Garage



Max Dimensions: 30'3" x 45'2"  
Calculated Area: 1362 sq. ft  
Included: No

Heated: No  
Finished: No  
Enclosed: Yes  
Contiguous: Yes  
Permitted: Yes  
Wet space: No  
Addition: No  
Conversion: No

13 Floor 1 - WC



Max Dimensions: 6'1" x 3'4"  
Calculated Area: 19 sq. ft  
Included: Yes

Heated: Yes  
Finished: Yes  
Enclosed: Yes  
Contiguous: Yes  
Permitted: Yes  
Wet space: Yes  
Addition: No  
Conversion: No

14 Floor 1 - Foyer



Max Dimensions: 20'5" x 15'1"  
Calculated Area: 307 sq. ft  
Included: Yes

Heated: Yes  
Finished: Yes  
Enclosed: Yes  
Contiguous: Yes  
Permitted: Yes  
Wet space: No  
Addition: No  
Conversion: No

15 Floor 1 - Bath



Max Dimensions: 15'7" x 5'1"  
Calculated Area: 66 sq. ft  
Included: Yes

Heated: Yes  
Finished: Yes  
Enclosed: Yes  
Contiguous: Yes  
Permitted: Yes  
Wet space: Yes  
Addition: No  
Conversion: No

16 Floor 1 - Patio



Max Dimensions: 39'7" x 25'1"  
Calculated Area: 1030 sq. ft  
Included: No

Heated: No  
Finished: Yes  
Enclosed: No  
Contiguous: Yes  
Permitted: Yes  
Wet space: No  
Addition: No  
Conversion: No

17 Floor 1 - Primary Bath



Max Dimensions: 12'3" x 14'7"  
Calculated Area: 148 sq. ft  
Included: Yes

Heated: Yes  
Finished: Yes  
Enclosed: Yes  
Contiguous: Yes  
Permitted: Yes  
Wet space: Yes  
Addition: No  
Conversion: No

18 Floor 1 - Living Room



Max Dimensions: 24'4" x 16'11"  
Calculated Area: 411 sq. ft  
Included: Yes

Heated: Yes  
Finished: Yes  
Enclosed: Yes  
Contiguous: Yes  
Permitted: Yes  
Wet space: No  
Addition: No  
Conversion: No

19 Floor 1 - Kitchen



Max Dimensions: 12'5" x 14'0"  
Calculated Area: 172 sq. ft  
Included: Yes

Heated: Yes  
Finished: Yes  
Enclosed: Yes  
Contiguous: Yes  
Permitted: Yes  
Wet space: No  
Addition: No  
Conversion: No

20 Floor 1 - Dining Area



Max Dimensions: 13'1" x 15'1"  
Calculated Area: 197 sq. ft  
Included: Yes

Heated: Yes  
Finished: Yes  
Enclosed: Yes  
Contiguous: Yes  
Permitted: Yes  
Wet space: No  
Addition: No  
Conversion: No

291 Dug Hill Road, Ryland Acres, Brownsboro, Madison County, Alabama, United States, 35741

21 Floor 2 - Hall



Max Dimensions: 3'0" x 6'10"  
Calculated Area: 21 sq. ft  
Included: Yes

Heated: Yes  
Finished: Yes  
Enclosed: Yes  
Contiguous: Yes  
Permitted: Yes  
Wet space: No  
Addition: No  
Conversion: No

22 Floor 2 - Kitchenette



Max Dimensions: 12'3" x 13'4"  
Calculated Area: 191 sq. ft  
Included: Yes

Heated: Yes  
Finished: Yes  
Enclosed: Yes  
Contiguous: Yes  
Permitted: Yes  
Wet space: No  
Addition: No  
Conversion: No

23 Floor 2 - Bedroom



Max Dimensions: 15'7" x 18'11"  
Calculated Area: 270 sq. ft  
Included: Yes

Heated: Yes  
Finished: Yes  
Enclosed: Yes  
Contiguous: Yes  
Permitted: Yes  
Wet space: No  
Addition: No  
Conversion: No

24 Floor 2 - Open To Below



Max Dimensions: 24'4" x 15'11"  
Calculated Area: 388 sq. ft  
Included: No

Heated: No  
Finished: No  
Enclosed: No  
Contiguous: Yes  
Permitted: No  
Wet space: No  
Addition: No  
Conversion: No

25 Floor 2 - Hall



Max Dimensions: 3'1" x 7'4"  
Calculated Area: 23 sq. ft  
Included: Yes

Heated: Yes  
Finished: Yes  
Enclosed: Yes  
Contiguous: Yes  
Permitted: Yes  
Wet space: No  
Addition: No  
Conversion: No

26 Floor 2 - Open To Below



Max Dimensions: 20'5" x 14'9"  
Calculated Area: 220 sq. ft  
Included: No

Heated: No  
Finished: No  
Enclosed: No  
Contiguous: Yes  
Permitted: No  
Wet space: No  
Addition: No  
Conversion: No

27 Floor 2 - Bath



Max Dimensions: 5'0" x 8'8"  
Calculated Area: 49 sq. ft  
Included: Yes

Heated: Yes  
Finished: Yes  
Enclosed: Yes  
Contiguous: Yes  
Permitted: Yes  
Wet space: Yes  
Addition: No  
Conversion: No

28 Floor 2 - Bedroom



Max Dimensions: 21'3" x 18'11"  
Calculated Area: 351 sq. ft  
Included: Yes

Heated: Yes  
Finished: Yes  
Enclosed: Yes  
Contiguous: Yes  
Permitted: Yes  
Wet space: No  
Addition: No  
Conversion: No

29 Floor 2 - Recreation Room



Max Dimensions: 23'0" x 31'10"  
Calculated Area: 680 sq. ft  
Included: Yes

Heated: Yes  
Finished: Yes  
Enclosed: Yes  
Contiguous: Yes  
Permitted: Yes  
Wet space: No  
Addition: No  
Conversion: No

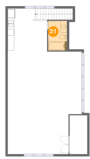
30 Floor 2 - Storage



Max Dimensions: 5'6" x 12'1"  
Calculated Area: 15 sq. ft  
Included: No

Heated: No  
Finished: No  
Enclosed: No  
Contiguous: Yes  
Permitted: Yes  
Wet space: No  
Addition: No  
Conversion: No

31 Floor 2 - Bath



Max Dimensions: 5'10" x 9'2"  
Calculated Area: 53 sq. ft  
Included: Yes

Heated: Yes  
Finished: Yes  
Enclosed: Yes  
Contiguous: Yes  
Permitted: Yes  
Wet space: Yes  
Addition: No  
Conversion: No

32 Floor 2 - Hall



Max Dimensions: 24'4" x 5'7"  
Calculated Area: 204 sq. ft  
Included: Yes

Heated: Yes  
Finished: Yes  
Enclosed: Yes  
Contiguous: Yes  
Permitted: Yes  
Wet space: No  
Addition: No  
Conversion: No



291 Dug Hill Road, Ryland Acres, Brownsboro, Madison County, Alabama, United States, 35741

33 Floor 2 - Office



Max Dimensions: 12'7" x 14'9"  
Calculated Area: 172 sq. ft  
Included: Yes

Heated: Yes  
Finished: Yes  
Enclosed: Yes  
Contiguous: Yes  
Permitted: Yes  
Wet space: No  
Addition: No  
Conversion: No