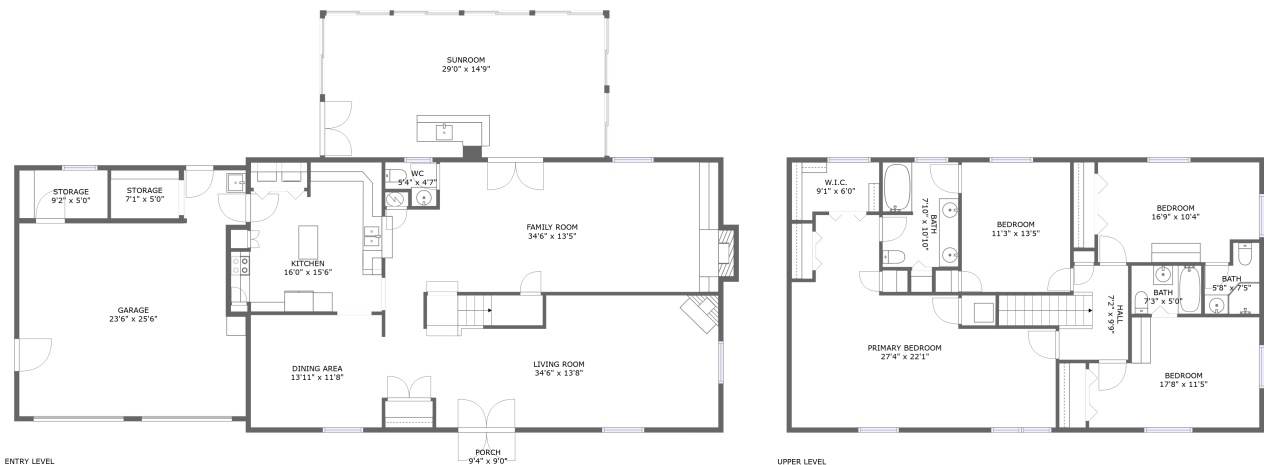


Home report

280 Hillcrest Drive, Rocky Mount, Franklin County, Virginia,
United States, 24151



Total GLA: 3294 sq. ft
Floor 1: 1885 sq. ft, Floor 2: 1409 sq. ft
Excluded: Garage 522 sq. ft, Storage 94 sq. ft, Porch 65 sq. ft, Fireplace 9 sq. ft

Property summary

 **2** Floors

 **4** Bedrooms

 **3** Bathrooms

Home report

**280 Hillcrest Drive, Rocky Mount, Franklin County, Virginia,
United States, 24151**



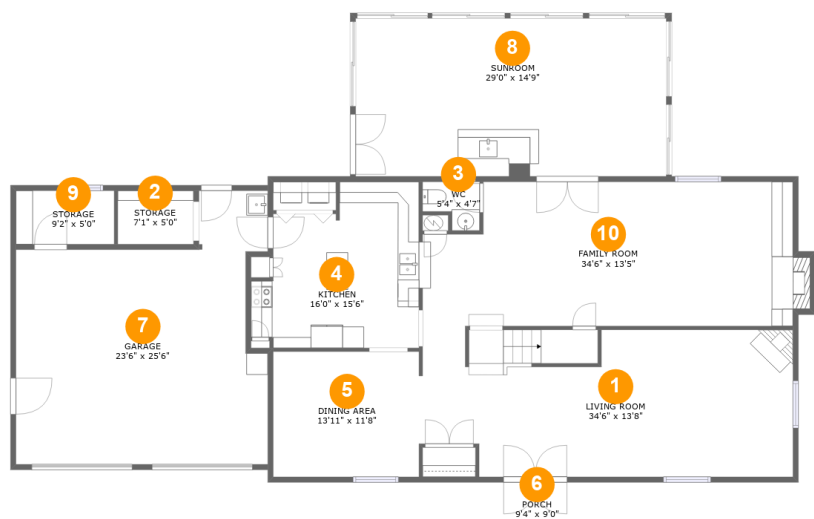
1
Half baths



1
Garages

Home report

280 Hillcrest Drive, Rocky Mount, Franklin County, Virginia,
United States, 24151



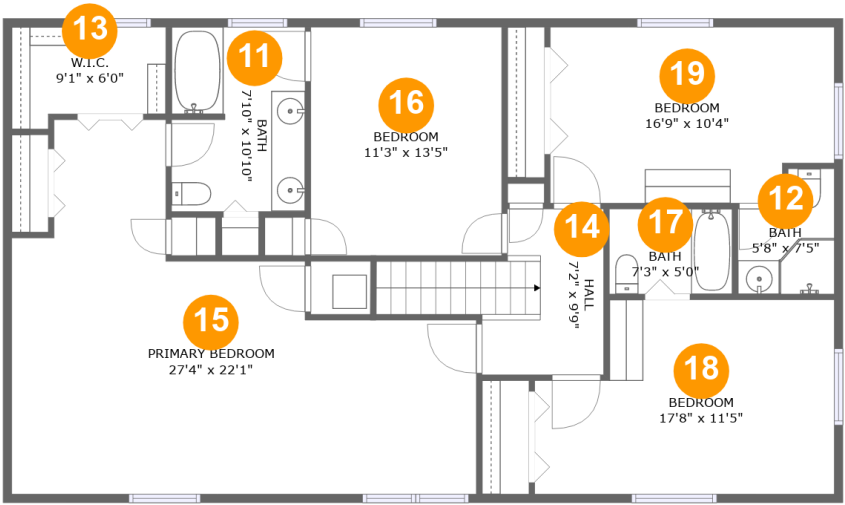
Room dimensions

Floor 1 Total:1885sqft Excluded: 690sqft

#		Max Dimensions	sqft	Included
1	Living Room	34'6" x 13'8"	454 sq. ft	Yes
2	Storage	7'1" x 5'0"	35 sq. ft	No
3	WC	5'4" x 4'7"	19 sq. ft	Yes
4	Kitchen	16'0" x 15'6"	204 sq. ft	Yes
5	Dining Area	13'11" x 11'8"	161 sq. ft	Yes
6	Porch	9'4" x 9'0"	65 sq. ft	No
7	Garage	23'6" x 25'6"	486 sq. ft	No
8	Sunroom	29'0" x 14'9"	426 sq. ft	Yes
9	Storage	9'2" x 5'0"	46 sq. ft	No
10	Family Room	34'6" x 13'5"	445 sq. ft	Yes

Home report

280 Hillcrest Drive, Rocky Mount, Franklin County, Virginia,
United States, 24151

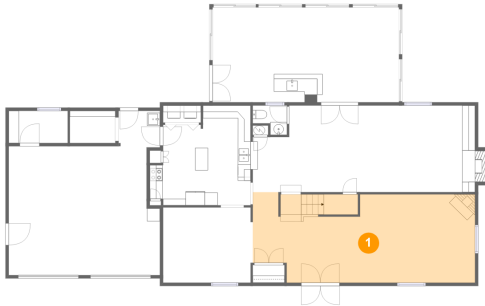


Room dimensions

Floor 2 Total:1409sqft Excluded: 0sqft

#		Max Dimensions	sqft	Included
11	Bath	7'10" x 10'10"	84 sq. ft	Yes
12	Bath	5'8" x 7'5"	35 sq. ft	Yes
13	W.I.C.	9'1" x 6'0"	48 sq. ft	Yes
14	Hall	7'2" x 9'9"	85 sq. ft	Yes
15	Primary Bedroom	27'4" x 22'1"	399 sq. ft	Yes
16	Bedroom	11'3" x 13'5"	151 sq. ft	Yes
17	Bath	7'3" x 5'0"	36 sq. ft	Yes
18	Bedroom	17'8" x 11'5"	181 sq. ft	Yes
19	Bedroom	16'9" x 10'4"	166 sq. ft	Yes

1 Floor 1 - Living Room



Max Dimensions: 34'6" x 13'8"
Calculated Area: 454 sq. ft
Included: Yes

Heated: Yes
Finished: Yes
Enclosed: Yes
Contiguous: Yes
Permitted: Yes
Wet space: No
Addition: No
Conversion: No

2 Floor 1 - Storage



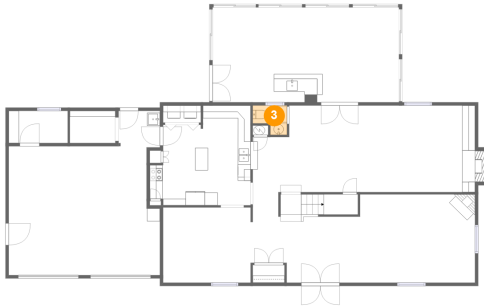
Max Dimensions: 7'1" x 5'0"
Calculated Area: 35 sq. ft
Included: No

Heated: No
Finished: No
Enclosed: No
Contiguous: Yes
Permitted: Yes
Wet space: No
Addition: No
Conversion: No

Home report

280 Hillcrest Drive, Rocky Mount, Franklin County, Virginia,
United States, 24151

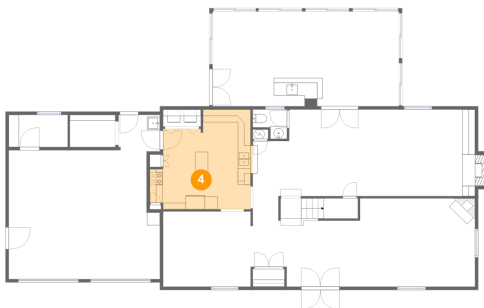
3 Floor 1 - WC



Max Dimensions: 5'4" x 4'7"
Calculated Area: 19 sq. ft
Included: Yes

Heated: Yes
Finished: Yes
Enclosed: Yes
Contiguous: Yes
Permitted: Yes
Wet space: Yes
Addition: No
Conversion: No

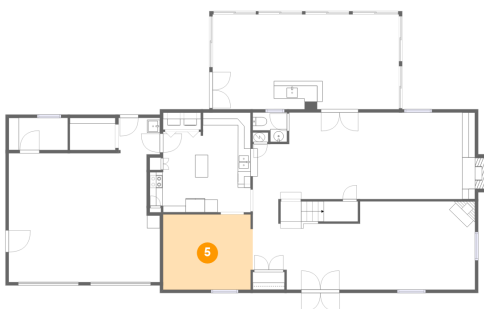
4 Floor 1 - Kitchen



Max Dimensions: 16'0" x 15'6"
Calculated Area: 204 sq. ft
Included: Yes

Heated: Yes
Finished: Yes
Enclosed: Yes
Contiguous: Yes
Permitted: Yes
Wet space: No
Addition: No
Conversion: No

5 Floor 1 - Dining Area



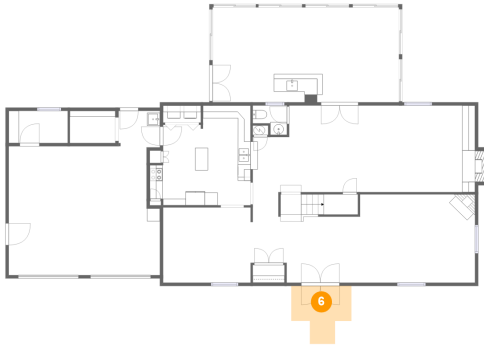
Max Dimensions: 13'11" x 11'8"
Calculated Area: 161 sq. ft
Included: Yes

Heated: Yes
Finished: Yes
Enclosed: Yes
Contiguous: Yes
Permitted: Yes
Wet space: No
Addition: No
Conversion: No

Home report

280 Hillcrest Drive, Rocky Mount, Franklin County, Virginia,
United States, 24151

6 Floor 1 - Porch



Max Dimensions: 9'4" x 9'0"
Calculated Area: 65 sq. ft
Included: No

Heated: No
Finished: Yes
Enclosed: No
Contiguous: Yes
Permitted: Yes
Wet space: No
Addition: No
Conversion: No

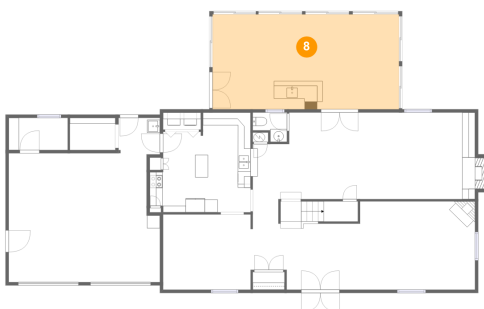
7 Floor 1 - Garage



Max Dimensions: 23'6" x
25'6"
Calculated Area: 486 sq. ft
Included: No

Heated: No
Finished: No
Enclosed: Yes
Contiguous:
Yes
Permitted: Yes
Wet space: No
Addition: No
Conversion: No

8 Floor 1 - Sunroom



Max Dimensions: 29'0" x
14'9"
Calculated Area: 426 sq. ft
Included: Yes

Heated: Yes
Finished: Yes
Enclosed: Yes
Contiguous:
Yes
Permitted: Yes
Wet space: No
Addition: No
Conversion: No

280 Hillcrest Drive, Rocky Mount, Franklin County, Virginia,
United States, 24151

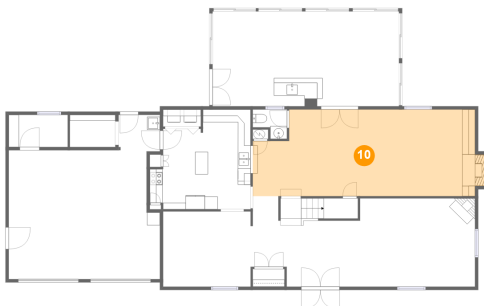
9 Floor 1 - Storage



Max Dimensions: 9'2" x 5'0"
Calculated Area: 46 sq. ft
Included: No

Heated: No
Finished: No
Enclosed: No
Contiguous: Yes
Permitted: Yes
Wet space: No
Addition: No
Conversion: No

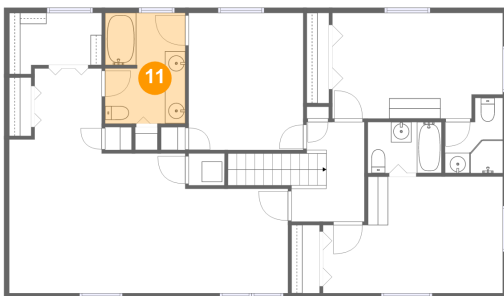
10 Floor 1 - Family Room



Max Dimensions: 34'6" x 13'5"
Calculated Area: 445 sq. ft
Included: Yes

Heated: Yes
Finished: Yes
Enclosed: Yes
Contiguous: Yes
Permitted: Yes
Wet space: No
Addition: No
Conversion: No

11 Floor 2 - Bath

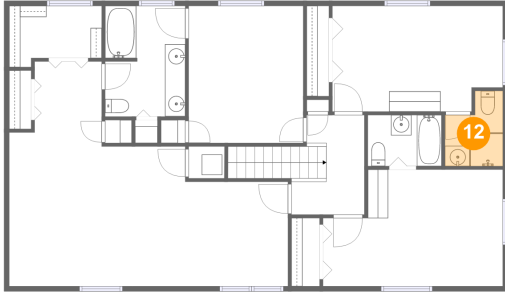


Max Dimensions: 7'10" x 10'10"
Calculated Area: 84 sq. ft
Included: Yes

Heated: Yes
Finished: Yes
Enclosed: Yes
Contiguous: Yes
Permitted: Yes
Wet space: Yes
Addition: No
Conversion: No

280 Hillcrest Drive, Rocky Mount, Franklin County, Virginia,
United States, 24151

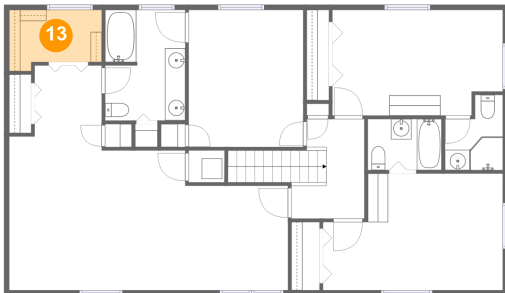
12 Floor 2 - Bath



Max Dimensions: 5'8" x 7'5"
Calculated Area: 35 sq. ft
Included: Yes

Heated: Yes
Finished: Yes
Enclosed: Yes
Contiguous: Yes
Permitted: Yes
Wet space: Yes
Addition: No
Conversion: No

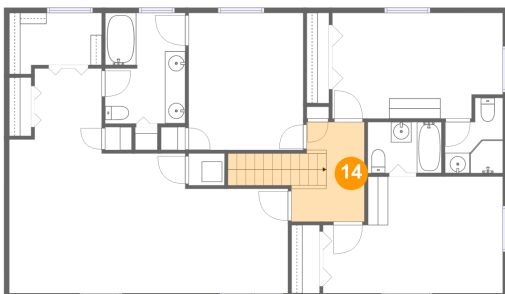
13 Floor 2 - W.I.C.



Max Dimensions: 9'1" x 6'0"
Calculated Area: 48 sq. ft
Included: Yes

Heated: Yes
Finished: Yes
Enclosed: Yes
Contiguous: Yes
Permitted: Yes
Wet space: No
Addition: No
Conversion: No

14 Floor 2 - Hall

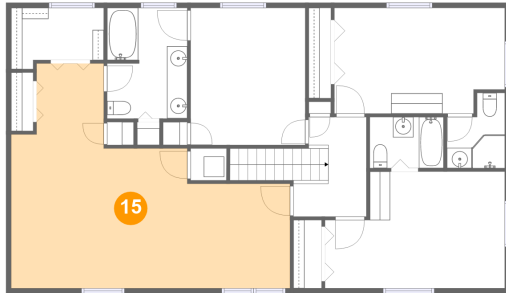


Max Dimensions: 7'2" x 9'9"
Calculated Area: 85 sq. ft
Included: Yes

Heated: Yes
Finished: Yes
Enclosed: Yes
Contiguous: Yes
Permitted: Yes
Wet space: No
Addition: No
Conversion: No

280 Hillcrest Drive, Rocky Mount, Franklin County, Virginia,
United States, 24151

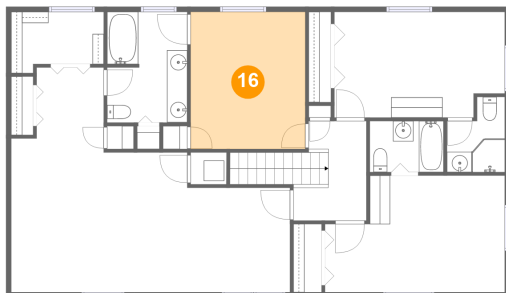
15 Floor 2 - Primary Bedroom



Max Dimensions: 27'4" x 22'1"
Calculated Area: 399 sq. ft
Included: Yes

Heated: Yes
Finished: Yes
Enclosed: Yes
Contiguous: Yes
Permitted: Yes
Wet space: No
Addition: No
Conversion: No

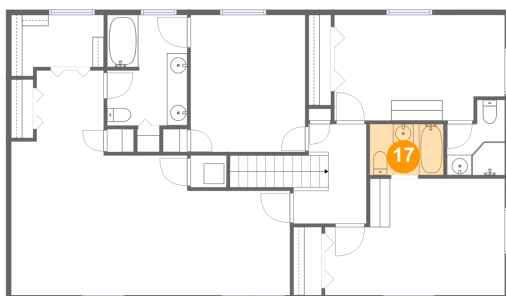
16 Floor 2 - Bedroom



Max Dimensions: 11'3" x 13'5"
Calculated Area: 151 sq. ft
Included: Yes

Heated: Yes
Finished: Yes
Enclosed: Yes
Contiguous: Yes
Permitted: Yes
Wet space: No
Addition: No
Conversion: No

17 Floor 2 - Bath

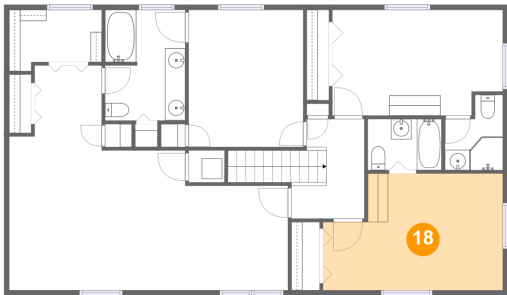


Max Dimensions: 7'3" x 5'0"
Calculated Area: 36 sq. ft
Included: Yes

Heated: Yes
Finished: Yes
Enclosed: Yes
Contiguous: Yes
Permitted: Yes
Wet space: Yes
Addition: No
Conversion: No

280 Hillcrest Drive, Rocky Mount, Franklin County, Virginia,
United States, 24151

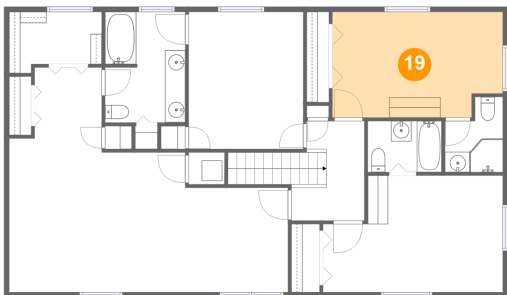
18 Floor 2 - Bedroom



Max Dimensions: 17'8" x 11'5"
Calculated Area: 181 sq. ft
Included: Yes

Heated: Yes
Finished: Yes
Enclosed: Yes
Contiguous: Yes
Permitted: Yes
Wet space: No
Addition: No
Conversion: No

19 Floor 2 - Bedroom



Max Dimensions: 16'9" x 10'4"
Calculated Area: 166 sq. ft
Included: Yes

Heated: Yes
Finished: Yes
Enclosed: Yes
Contiguous: Yes
Permitted: Yes
Wet space: No
Addition: No
Conversion: No