



Home report


3355 Cory Hill Road, Marion New York United States




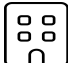
Property summary


 **2** Garages


 **3** Bedrooms

 **2** Bathrooms

 **1** Half baths

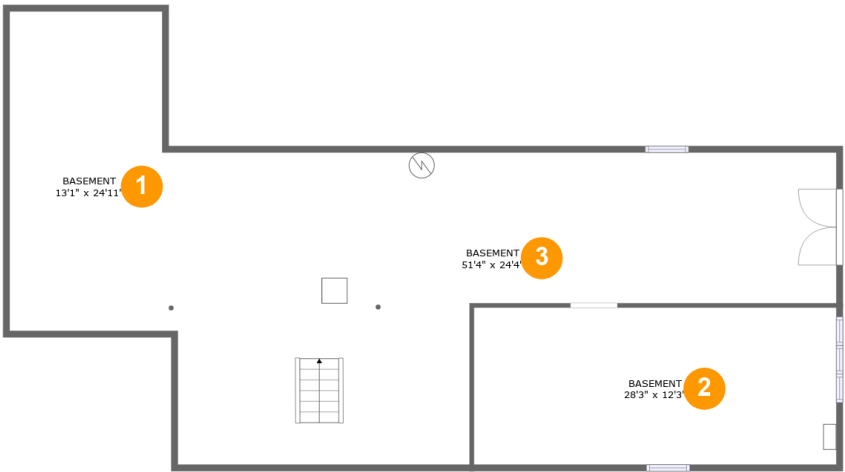
 **2** Floors

 **1,737** Gross living area sqft

 **4,256** Total sqft

Home report

3355 Cory Hill Road, Marion New York United States



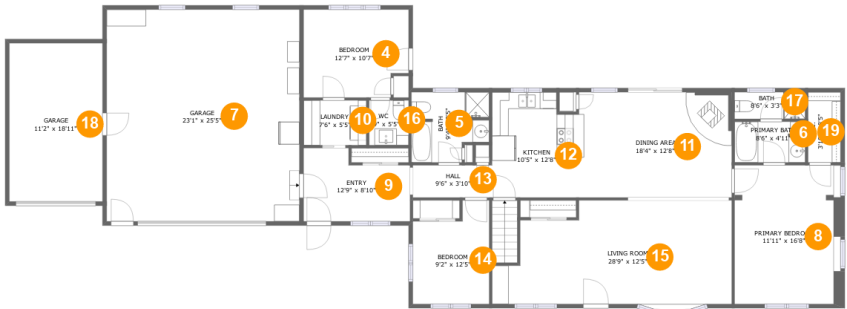
Room dimensions

Floor 1 Total sqft: 1662 Living area: 0

#		Max Dimensions	sqft	Included
1	Basement	13'1" x 24'11"	313 sq. ft	No
2	Basement	28'3" x 12'3"	346 sq. ft	No
3	Basement	51'4" x 24'4"	889 sq. ft	No

Home report

3355 Cory Hill Road, Marion New York United States



Room dimensions

Floor 2

Total sqft: 2594

Living area: 1737

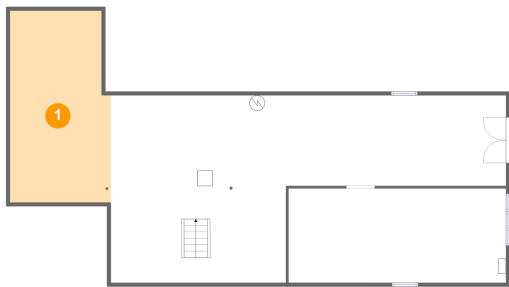
#		Max Dimensions	sqft	Included
4	Bedroom	12'7" x 10'7"	127 sq. ft	Yes
5	Bath	9'4" x 8'5"	69 sq. ft	Yes
6	Primary Bath	8'6" x 4'11"	41 sq. ft	Yes
7	Garage	23'1" x 25'5"	587 sq. ft	No
8	Primary Bedroom	11'11" x 16'8"	205 sq. ft	Yes
9	Entry	12'9" x 8'10"	97 sq. ft	Yes
10	Laundry	7'6" x 5'5"	41 sq. ft	Yes
11	Dining Area	18'4" x 12'8"	231 sq. ft	Yes
12	Kitchen	10'5" x 12'8"	125 sq. ft	Yes
13	Hall	9'6" x 3'10"	37 sq. ft	Yes
14	Bedroom	9'2" x 12'5"	99 sq. ft	Yes

Home report

3355 Cory Hill Road, Marion New York United States

#		Max Dimensions	sqft	Included
15	Living Room	28'9" x 12'5"	319 sq. ft	Yes
16	WC	4'9" x 5'5"	25 sq. ft	Yes
17	Bath	8'6" x 3'3"	27 sq. ft	Yes
18	Garage	11'2" x 18'11"	212 sq. ft	No
19	W.I.C.	3'10" x 8'5"	33 sq. ft	Yes

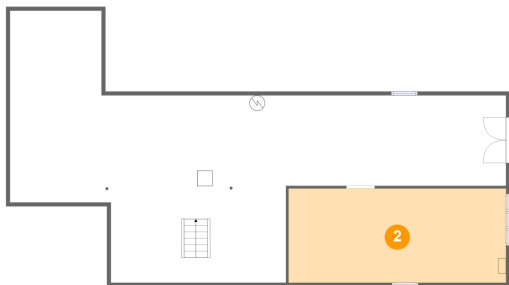
1 Floor 1 - Basement



Max Dimensions: 13'1" x 24'11"
Calculated Area: 313 sq. ft
Included: No

Heated: Yes
Finished: No
Enclosed: Yes
Contiguous: Yes
Permitted: Yes
Wet space: No
Addition: No
Conversion: No

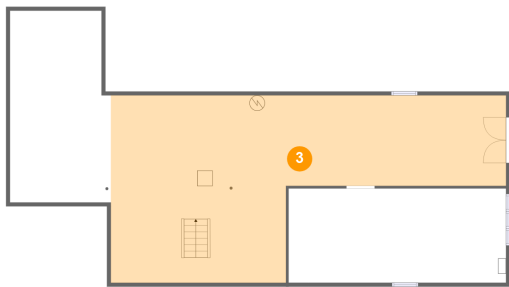
2 Floor 1 - Basement



Max Dimensions: 28'3" x 12'3"
Calculated Area: 346 sq. ft
Included: No

Heated: Yes
Finished: No
Enclosed: Yes
Contiguous: Yes
Permitted: Yes
Wet space: No
Addition: No
Conversion: No

3 Floor 1 - Basement



Max Dimensions: 51'4" x 24'4"
Calculated Area: 889 sq. ft
Included: No

Heated: Yes
Finished: No
Enclosed: Yes
Contiguous: Yes
Permitted: Yes
Wet space: No
Addition: No
Conversion: No

4 Floor 2 - Bedroom



Max Dimensions: 12'7" x 10'7"
Calculated Area: 127 sq. ft
Included: Yes

Heated: Yes
Finished: Yes
Enclosed: Yes
Contiguous: Yes
Permitted: Yes
Wet space: No
Addition: No
Conversion: No

5 Floor 2 - Bath



Max Dimensions: 9'4" x 8'5"
Calculated Area: 69 sq. ft
Included: Yes

Heated: Yes
Finished: Yes
Enclosed: Yes
Contiguous: Yes
Permitted: Yes
Wet space: Yes
Addition: No
Conversion: No

6 Floor 2 - Primary Bath



Max Dimensions: 8'6" x 4'11"
Calculated Area: 41 sq. ft
Included: Yes

Heated: Yes
Finished: Yes
Enclosed: Yes
Contiguous: Yes
Permitted: Yes
Wet space: Yes
Addition: No
Conversion: No

7 Floor 2 - Garage



Max Dimensions: 23'1" x 25'5"
Calculated Area: 587 sq. ft
Included: No

Heated: No
Finished: No
Enclosed: Yes
Contiguous: Yes
Permitted: Yes
Wet space: No
Addition: No
Conversion: No

8 Floor 2 - Primary Bedroom



Max Dimensions: 11'11" x 16'8"
Calculated Area: 205 sq. ft
Included: Yes

Heated: Yes
Finished: Yes
Enclosed: Yes
Contiguous: Yes
Permitted: Yes
Wet space: No
Addition: No
Conversion: No

9 Floor 2 - Entry



Max Dimensions: 12'9" x 8'10"
Calculated Area: 97 sq. ft
Included: Yes

Heated: Yes
Finished: Yes
Enclosed: Yes
Contiguous: Yes
Permitted: Yes
Wet space: No
Addition: No
Conversion: No

10 Floor 2 - Laundry



Max Dimensions: 7'6" x 5'5"
Calculated Area: 41 sq. ft
Included: Yes

Heated: Yes
Finished: Yes
Enclosed: Yes
Contiguous: Yes
Permitted: Yes
Wet space: No
Addition: No
Conversion: No

11 Floor 2 - Dining Area



Max Dimensions: 18'4" x 12'8"
Calculated Area: 231 sq. ft
Included: Yes

Heated: Yes
Finished: Yes
Enclosed: Yes
Contiguous: Yes
Permitted: Yes
Wet space: No
Addition: No
Conversion: No

12 Floor 2 - Kitchen



Max Dimensions: 10'5" x 12'8"
Calculated Area: 125 sq. ft
Included: Yes

Heated: Yes
Finished: Yes
Enclosed: Yes
Contiguous: Yes
Permitted: Yes
Wet space: No
Addition: No
Conversion: No

13 Floor 2 - Hall



Max Dimensions: 9'6" x 3'10"
Calculated Area: 37 sq. ft
Included: Yes

Heated: Yes
Finished: Yes
Enclosed: Yes
Contiguous: Yes
Permitted: Yes
Wet space: No
Addition: No
Conversion: No

14 Floor 2 - Bedroom



Max Dimensions: 9'2" x 12'5"
Calculated Area: 99 sq. ft
Included: Yes

Heated: Yes
Finished: Yes
Enclosed: Yes
Contiguous: Yes
Permitted: Yes
Wet space: No
Addition: No
Conversion: No

15 Floor 2 - Living Room



Max Dimensions: 28'9" x 12'5"
Calculated Area: 319 sq. ft
Included: Yes

Heated: Yes
Finished: Yes
Enclosed: Yes
Contiguous: Yes
Permitted: Yes
Wet space: No
Addition: No
Conversion: No

16 Floor 2 - WC



Max Dimensions: 4'9" x 5'5"
Calculated Area: 25 sq. ft
Included: Yes

Heated: Yes
Finished: Yes
Enclosed: Yes
Contiguous: Yes
Permitted: Yes
Wet space: Yes
Addition: No
Conversion: No

17 Floor 2 - Bath



Max Dimensions: 8'6" x 3'3"
Calculated Area: 27 sq. ft
Included: Yes

Heated: Yes
Finished: Yes
Enclosed: Yes
Contiguous: Yes
Permitted: Yes
Wet space: Yes
Addition: No
Conversion: No

18 Floor 2 - Garage



Max Dimensions: 11'2" x 18'11"
Calculated Area: 212 sq. ft
Included: No

Heated: No
Finished: No
Enclosed: Yes
Contiguous: Yes
Permitted: Yes
Wet space: No
Addition: No
Conversion: No

19 Floor 2 - W.I.C.



Max Dimensions: 3'10" x 8'5"
Calculated Area: 33 sq. ft
Included: Yes

Heated: Yes
Finished: Yes
Enclosed: Yes
Contiguous: Yes
Permitted: Yes
Wet space: No
Addition: No
Conversion: No