

Home report

556 Laurier Avenue West, Centretown, Ottawa, Ontario, Canada,
K1R 7X2, 601



Total Area: 868 sq. ft

Floor 1: 868 sq. ft

Excluded: Balcony 93 sq. ft, Walls: 59 sq. ft

Property summary

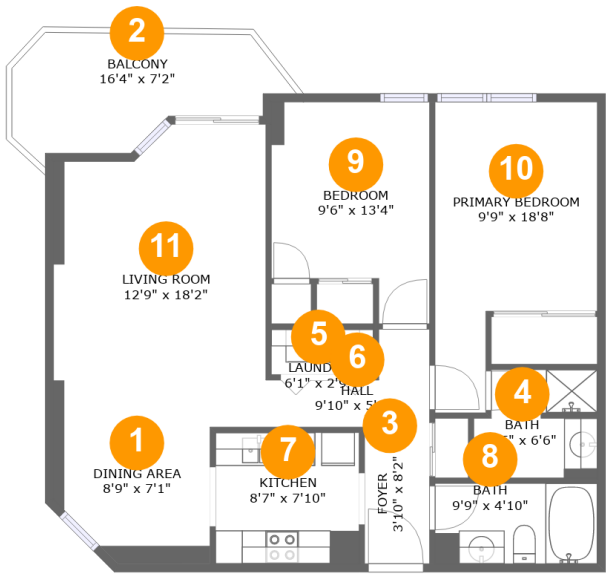
 **1** Floors

 **2** Bedrooms

 **2** Bathrooms

Home report

556 Laurier Avenue West, Centretown, Ottawa, Ontario, Canada,
K1R 7X2, 601



Room dimensions

Floor 1 Total:868sqft Excluded: 93sqft

#		Max Dimensions	sqft	Included
1	Dining Area	8'9" x 7'1"	70 sq. ft	Yes
2	Balcony	16'4" x 7'2"	93 sq. ft	No
3	Foyer	3'10" x 8'2"	32 sq. ft	Yes
4	Bath	7'5" x 6'6"	44 sq. ft	Yes
5	Laundry	6'1" x 2'9"	17 sq. ft	Yes
6	Hall	9'10" x 5'10"	37 sq. ft	Yes
7	Kitchen	8'7" x 7'10"	68 sq. ft	Yes
8	Bath	9'9" x 4'10"	47 sq. ft	Yes
9	Bedroom	9'6" x 13'4"	109 sq. ft	Yes
10	Primary Bedroom	9'9" x 18'8"	141 sq. ft	Yes
11	Living Room	12'9" x 18'2"	218 sq. ft	Yes

1 Floor 1 - Dining Area



Max Dimensions: 8'9" x 7'1"
Calculated Area: 70 sq. ft
Included: Yes

Heated: Yes
Finished: Yes
Enclosed: Yes
Contiguous: Yes
Permitted: Yes
Wet space: No
Addition: No
Conversion: No

2 Floor 1 - Balcony



Max Dimensions: 16'4" x 7'2"
Calculated Area: 93 sq. ft
Included: No

Heated: No
Finished: Yes
Enclosed: No
Contiguous: Yes
Permitted: Yes
Wet space: No
Addition: No
Conversion: No

556 Laurier Avenue West, Centretown, Ottawa, Ontario, Canada,
K1R 7X2, 601

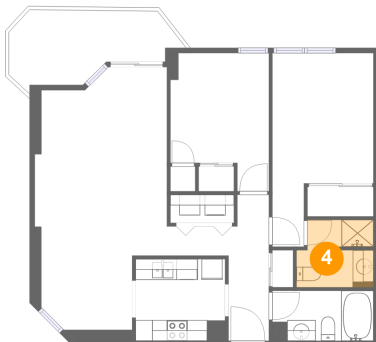
3 Floor 1 - Foyer



Max Dimensions: 3'10" x 8'2"
Calculated Area: 32 sq. ft
Included: Yes

Heated: Yes
Finished: Yes
Enclosed: Yes
Contiguous: Yes
Permitted: Yes
Wet space: No
Addition: No
Conversion: No

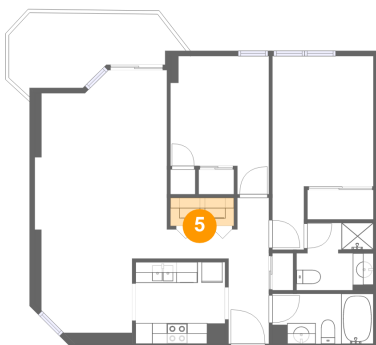
4 Floor 1 - Bath



Max Dimensions: 7'5" x 6'6"
Calculated Area: 44 sq. ft
Included: Yes

Heated: Yes
Finished: Yes
Enclosed: Yes
Contiguous: Yes
Permitted: Yes
Wet space: Yes
Addition: No
Conversion: No

5 Floor 1 - Laundry



Max Dimensions: 6'1" x 2'9"
Calculated Area: 17 sq. ft
Included: Yes

Heated: Yes
Finished: Yes
Enclosed: Yes
Contiguous: Yes
Permitted: Yes
Wet space: No
Addition: No
Conversion: No

556 Laurier Avenue West, Centretown, Ottawa, Ontario, Canada,
K1R 7X2, 601

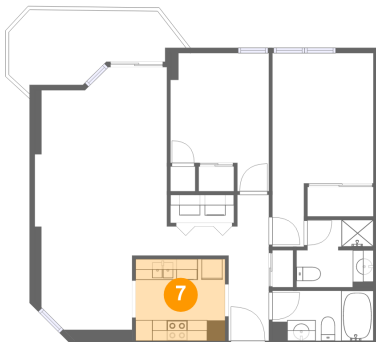
6 Floor 1 - Hall



Max Dimensions: 9'10" x 5'10"
Calculated Area: 37 sq. ft
Included: Yes

Heated: Yes
Finished: Yes
Enclosed: Yes
Contiguous: Yes
Permitted: Yes
Wet space: No
Addition: No
Conversion: No

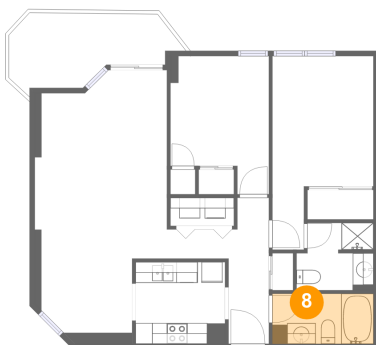
7 Floor 1 - Kitchen



Max Dimensions: 8'7" x 7'10"
Calculated Area: 68 sq. ft
Included: Yes

Heated: Yes
Finished: Yes
Enclosed: Yes
Contiguous: Yes
Permitted: Yes
Wet space: No
Addition: No
Conversion: No

8 Floor 1 - Bath



Max Dimensions: 9'9" x 4'10"
Calculated Area: 47 sq. ft
Included: Yes

Heated: Yes
Finished: Yes
Enclosed: Yes
Contiguous: Yes
Permitted: Yes
Wet space: Yes
Addition: No
Conversion: No

556 Laurier Avenue West, Centretown, Ottawa, Ontario, Canada,
K1R 7X2, 601

9 Floor 1 - Bedroom



Max Dimensions: 9'6" x 13'4"
Calculated Area: 109 sq. ft
Included: Yes

Heated: Yes
Finished: Yes
Enclosed: Yes
Contiguous: Yes
Permitted: Yes
Wet space: No
Addition: No
Conversion: No

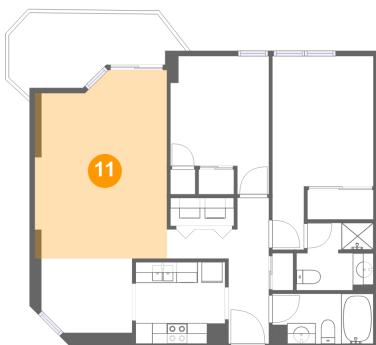
10 Floor 1 - Primary Bedroom



Max Dimensions: 9'9" x 18'8"
Calculated Area: 141 sq. ft
Included: Yes

Heated: Yes
Finished: Yes
Enclosed: Yes
Contiguous: Yes
Permitted: Yes
Wet space: No
Addition: No
Conversion: No

11 Floor 1 - Living Room



Max Dimensions: 12'9" x 18'2"
Calculated Area: 218 sq. ft
Included: Yes

Heated: Yes
Finished: Yes
Enclosed: Yes
Contiguous: Yes
Permitted: Yes
Wet space: No
Addition: No
Conversion: No