



Home report


3667 Tiana Street, Roy, Forest Grove, Washington County,
Oregon, United States, 97116





Property summary


 **1** Garages


 **4** Bedrooms

 **2** Bathrooms

 **1** Half baths

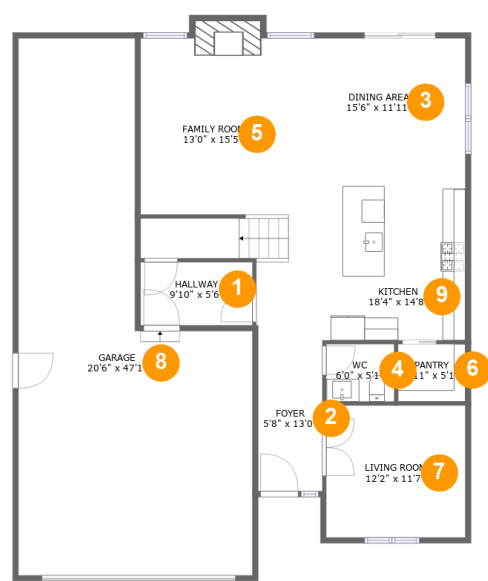
 **2** Floors

 **2,797** Gross living area sqft

 **3,552** Total sqft

Home report

3667 Tiana Street, Roy, Forest Grove, Washington County,
Oregon, United States, 97116



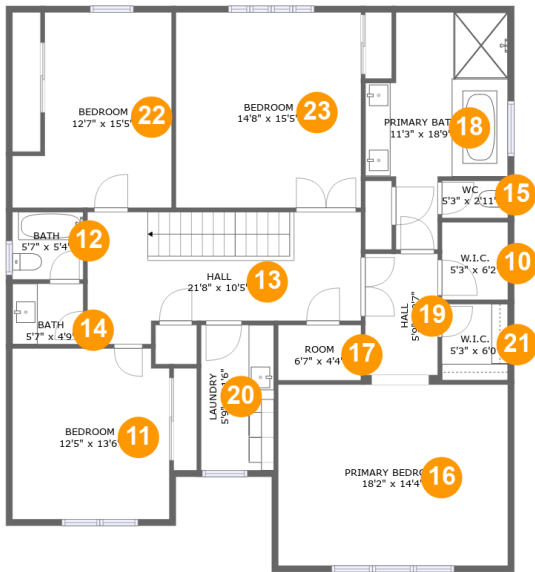
Room dimensions

Floor 1 Total sqft: 1859 Living area: 1104

#		Dimensions	sqft	Counted as living area
1	Hallway	9'10" x 5'6"	54 sq. ft	Yes
2	Foyer	5'8" x 13'0"	73 sq. ft	Yes
3	Dining Area	15'6" x 11'11"	185 sq. ft	Yes
4	WC	6'0" x 5'1"	30 sq. ft	Yes
5	Family Room	13'0" x 15'5"	209 sq. ft	Yes
6	Pantry	5'11" x 5'1"	30 sq. ft	Yes
7	Living Room	12'2" x 11'7"	141 sq. ft	Yes
8	Garage	20'6" x 47'1"	702 sq. ft	No
9	Kitchen	18'4" x 14'8"	293 sq. ft	Yes

Home report

3667 Tiana Street, Roy, Forest Grove, Washington County,
Oregon, United States, 97116



Room dimensions

Floor 2 Total sqft: 1693 Living area: 1693

#		Dimensions	sqft	Counted as living area
10	W.I.C.	5'3" x 6'2"	32 sq. ft	Yes
11	Bedroom	12'5" x 13'6"	166 sq. ft	Yes
12	Bath	5'7" x 5'4"	30 sq. ft	Yes
13	Hall	21'8" x 10'5"	196 sq. ft	Yes
14	Bath	5'7" x 4'9"	27 sq. ft	Yes
15	WC	5'3" x 2'11"	15 sq. ft	Yes
16	Primary Bedroom	18'2" x 14'4"	260 sq. ft	Yes
17	Room	6'7" x 4'4"	29 sq. ft	Yes
18	Primary Bath	11'3" x 18'9"	152 sq. ft	Yes
19	Hall	5'9" x 9'7"	55 sq. ft	Yes
20	Laundry	5'9" x 11'6"	66 sq. ft	Yes

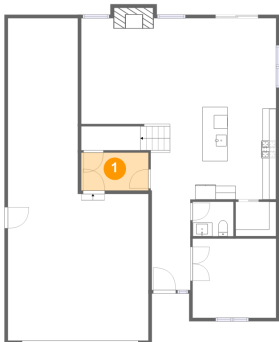
Home report

3667 Tiana Street, Roy, Forest Grove, Washington County,
Oregon, United States, 97116

#		Dimensions	sqft	Counted as living area
21	W.I.C.	5'3" x 6'0"	31 sq. ft	Yes
22	Bedroom	12'7" x 15'5"	166 sq. ft	Yes
23	Bedroom	14'8" x 15'5"	226 sq. ft	Yes

3667 Tiana Street, Roy, Forest Grove, Washington County,
Oregon, United States, 97116

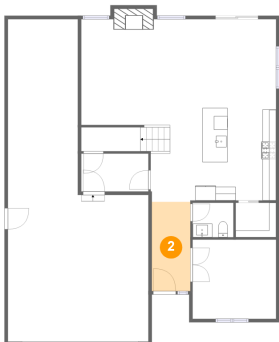
1 Floor 1 - Hallway



Dimensions: 9'10" x 5'6"
Area: 54 sq. ft
Counted as living area: Yes

Heated: Yes
Finished: Yes
Enclosed: Yes
Contiguous: Yes
Permitted: Yes
Wet space: No
Addition: No
Conversion: No

2 Floor 1 - Foyer



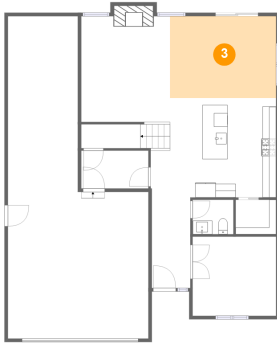
Dimensions: 5'8" x 13'0"
Area: 73 sq. ft
Counted as living area: Yes

Heated: Yes
Finished: Yes
Enclosed: Yes
Contiguous: Yes
Permitted: Yes
Wet space: No
Addition: No
Conversion: No

Home report

3667 Tiana Street, Roy, Forest Grove, Washington County,
Oregon, United States, 97116

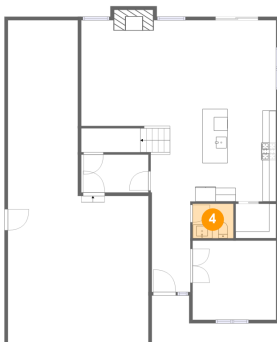
3 Floor 1 - Dining Area



Dimensions: 15'6" x 11'11"
Area: 185 sq. ft
Counted as living area: Yes

Heated: Yes
Finished: Yes
Enclosed: Yes
Contiguous: Yes
Permitted: Yes
Wet space: No
Addition: No
Conversion: No

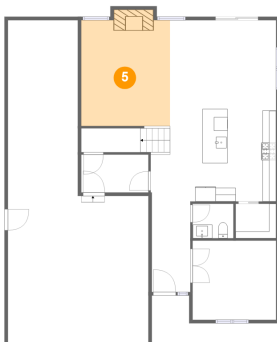
4 Floor 1 - WC



Dimensions: 6'0" x 5'1"
Area: 30 sq. ft
Counted as living area: Yes

Heated: Yes
Finished: Yes
Enclosed: Yes
Contiguous: Yes
Permitted: Yes
Wet space: Yes
Addition: No
Conversion: No

5 Floor 1 - Family Room

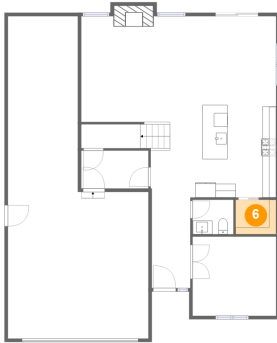


Dimensions: 13'0" x 15'5"
Area: 209 sq. ft
Counted as living area: Yes

Heated: Yes
Finished: Yes
Enclosed: Yes
Contiguous: Yes
Permitted: Yes
Wet space: No
Addition: No
Conversion: No

3667 Tiana Street, Roy, Forest Grove, Washington County,
Oregon, United States, 97116

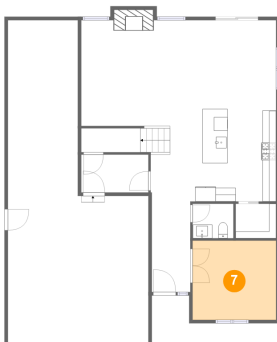
6 Floor 1 - Pantry



Dimensions: 5'11" x 5'1"
Area: 30 sq. ft
Counted as living area: Yes

Heated: Yes
Finished: Yes
Enclosed: Yes
Contiguous: Yes
Permitted: Yes
Wet space: No
Addition: No
Conversion: No

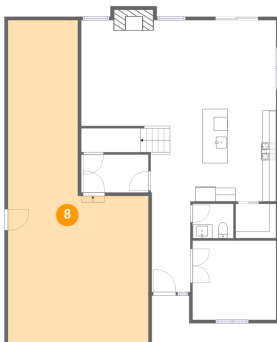
7 Floor 1 - Living Room



Dimensions: 12'2" x 11'7"
Area: 141 sq. ft
Counted as living area: Yes

Heated: Yes
Finished: Yes
Enclosed: Yes
Contiguous: Yes
Permitted: Yes
Wet space: No
Addition: No
Conversion: No

8 Floor 1 - Garage

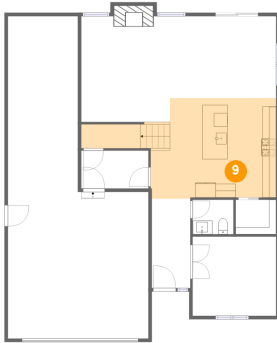


Dimensions: 20'6" x 47'1"
Area: 702 sq. ft
Counted as living area: No

Heated: No
Finished: No
Enclosed: Yes
Contiguous: Yes
Permitted: Yes
Wet space: No
Addition: No
Conversion: No

3667 Tiana Street, Roy, Forest Grove, Washington County,
Oregon, United States, 97116

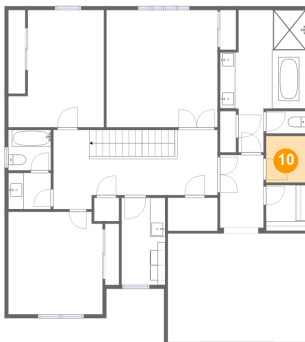
9 Floor 1 - Kitchen



Dimensions: 18'4" x 14'8"
Area: 293 sq. ft
Counted as living area: Yes

Heated: Yes
Finished: Yes
Enclosed: Yes
Contiguous: Yes
Permitted: Yes
Wet space: No
Addition: No
Conversion: No

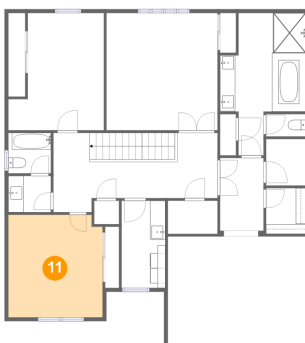
10 Floor 2 - W.I.C.



Dimensions: 5'3" x 6'2"
Area: 32 sq. ft
Counted as living area: Yes

Heated: Yes
Finished: Yes
Enclosed: Yes
Contiguous: Yes
Permitted: Yes
Wet space: No
Addition: No
Conversion: No

11 Floor 2 - Bedroom

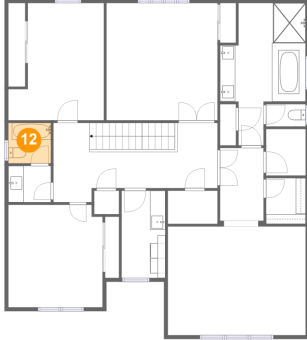


Dimensions: 12'5" x 13'6"
Area: 166 sq. ft
Counted as living area: Yes

Heated: Yes
Finished: Yes
Enclosed: Yes
Contiguous: Yes
Permitted: Yes
Wet space: No
Addition: No
Conversion: No

3667 Tiana Street, Roy, Forest Grove, Washington County,
Oregon, United States, 97116

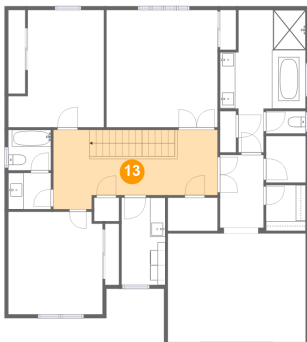
12 Floor 2 - Bath



Dimensions: 5'7" x 5'4"
Area: 30 sq. ft
Counted as living area: Yes

Heated: Yes
Finished: Yes
Enclosed: Yes
Contiguous: Yes
Permitted: Yes
Wet space: Yes
Addition: No
Conversion: No

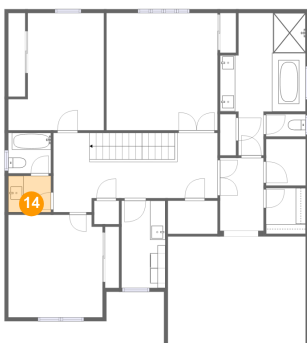
13 Floor 2 - Hall



Dimensions: 21'8" x 10'5"
Area: 196 sq. ft
Counted as living area: Yes

Heated: Yes
Finished: Yes
Enclosed: Yes
Contiguous: Yes
Permitted: Yes
Wet space: No
Addition: No
Conversion: No

14 Floor 2 - Bath



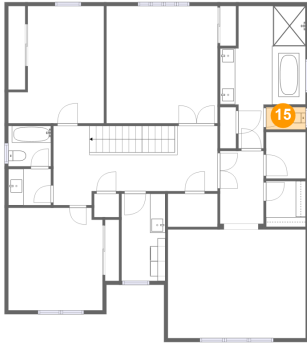
Dimensions: 5'7" x 4'9"
Area: 27 sq. ft
Counted as living area: Yes

Heated: Yes
Finished: Yes
Enclosed: Yes
Contiguous: Yes
Permitted: Yes
Wet space: Yes
Addition: No
Conversion: No

Home report

3667 Tiana Street, Roy, Forest Grove, Washington County,
Oregon, United States, 97116

15 Floor 2 - WC



Dimensions: 5'3" x 2'11"
Area: 15 sq. ft
Counted as living area: Yes

Heated: Yes
Finished: Yes
Enclosed: Yes
Contiguous: Yes
Permitted: Yes
Wet space: Yes
Addition: No
Conversion: No

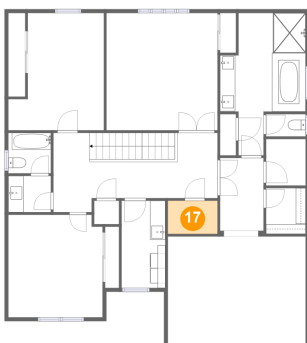
16 Floor 2 - Primary Bedroom



Dimensions: 18'2" x 14'4"
Area: 260 sq. ft
Counted as living area: Yes

Heated: Yes
Finished: Yes
Enclosed: Yes
Contiguous: Yes
Permitted: Yes
Wet space: No
Addition: No
Conversion: No

17 Floor 2 - Room

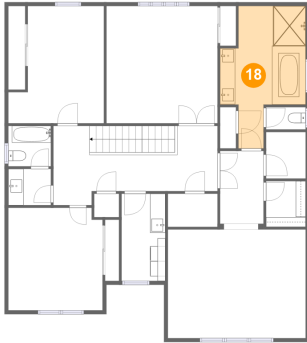


Dimensions: 6'7" x 4'4"
Area: 29 sq. ft
Counted as living area: Yes

Heated: Yes
Finished: Yes
Enclosed: Yes
Contiguous: Yes
Permitted: Yes
Wet space: No
Addition: No
Conversion: No

3667 Tiana Street, Roy, Forest Grove, Washington County,
Oregon, United States, 97116

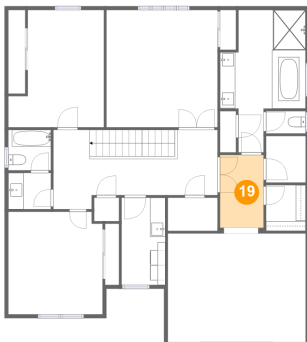
18 Floor 2 - Primary Bath



Dimensions: 11'3" x 18'9"
Area: 152 sq. ft
Counted as living area: Yes

Heated: Yes
Finished: Yes
Enclosed: Yes
Contiguous: Yes
Permitted: Yes
Wet space: Yes
Addition: No
Conversion: No

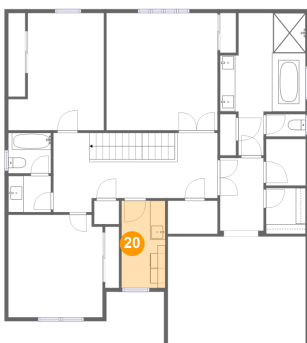
19 Floor 2 - Hall



Dimensions: 5'9" x 9'7"
Area: 55 sq. ft
Counted as living area: Yes

Heated: Yes
Finished: Yes
Enclosed: Yes
Contiguous: Yes
Permitted: Yes
Wet space: No
Addition: No
Conversion: No

20 Floor 2 - Laundry

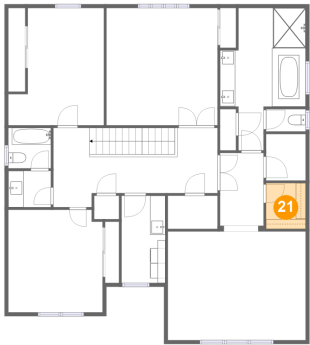


Dimensions: 5'9" x 11'6"
Area: 66 sq. ft
Counted as living area: Yes

Heated: Yes
Finished: Yes
Enclosed: Yes
Contiguous: Yes
Permitted: Yes
Wet space: No
Addition: No
Conversion: No

3667 Tiana Street, Roy, Forest Grove, Washington County,
Oregon, United States, 97116

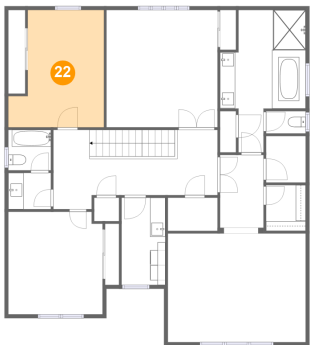
21 Floor 2 - W.I.C.



Dimensions: 5'3" x 6'0"
Area: 31 sq. ft
Counted as living area: Yes

Heated: Yes
Finished: Yes
Enclosed: Yes
Contiguous: Yes
Permitted: Yes
Wet space: No
Addition: No
Conversion: No

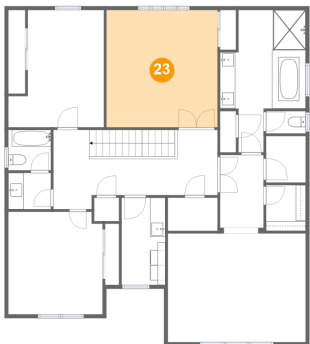
22 Floor 2 - Bedroom



Dimensions: 12'7" x 15'5"
Area: 166 sq. ft
Counted as living area: Yes

Heated: Yes
Finished: Yes
Enclosed: Yes
Contiguous: Yes
Permitted: Yes
Wet space: No
Addition: No
Conversion: No

23 Floor 2 - Bedroom



Dimensions: 14'8" x 15'5"
Area: 226 sq. ft
Counted as living area: Yes

Heated: Yes
Finished: Yes
Enclosed: Yes
Contiguous: Yes
Permitted: Yes
Wet space: No
Addition: No
Conversion: No