

4306 West Swann Avenue, Beach Park, Tampa, Hillsborough County, Florida, United States,



Property Summary



2 floors



5 bedrooms



4 bathrooms



4,411 total sqft



1 garages



3,967 Gross Living Area sqft

4306 West Swann Avenue, Beach Park, Tampa, Hillsborough County, Florida, United States,



Room Dimensions

Floor 1

Total sqft: 3409

Living area: 2965

#	Room name	Dimensions	Area (sqft)	Counted as Living Area
1	Hall	4'6" x 30'2"	116 sq. ft	Yes
2	Bath	4'9" x 8'1"	39 sq. ft	Yes
3	Dining Room	19'0" x 12'8"	219 sq. ft	Yes
4	Pantry	10'5" x 5'3"	54 sq. ft	Yes
5	Living Room	24'7" x 28'11"	640 sq. ft	Yes
6	W.i.c.	3'11" x 4'6"	18 sq. ft	Yes
7	W.i.c.	3'10" x 8'1"	31 sq. ft	Yes
8	Bedroom	10'5" x 11'11"	124 sq. ft	Yes
9	Kitchen	18'10" x 21'6"	322 sq. ft	Yes
10	Bath	7'1" x 8'3"	57 sq. ft	Yes
11	Foyer	11'4" x 12'8"	103 sq. ft	Yes

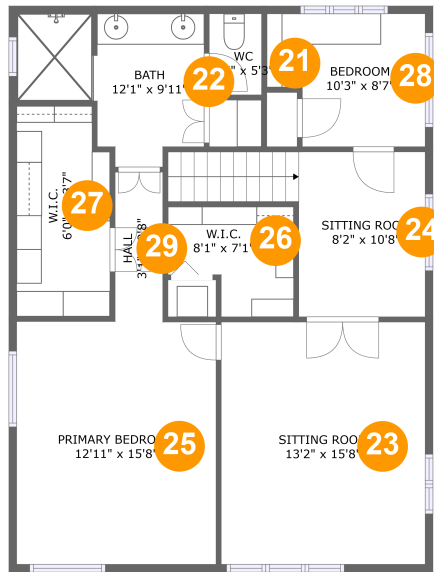
Scan captured on Mon, 06 May 2024 00:53:43 GMT

Information is calculated by CubiCasa technology; deemed highly reliable but not guaranteed.

**4306 West Swann Avenue, Beach Park, Tampa,
Hillsborough County, Florida, United States,**

#	Room name	Dimensions	Area (sqft)	Counted as Living Area
12	Bath	7'0" x 9'3"	55 sq. ft	Yes
13	Hall	4'10" x 8'4"	35 sq. ft	Yes
14	Garage	18'5" x 22'11"	422 sq. ft	No
15	W.i.c.	4'7" x 4'6"	21 sq. ft	Yes
16	Bath	7'9" x 8'1"	50 sq. ft	Yes
17	Bedroom	11'10" x 12'7"	150 sq. ft	Yes
18	Bedroom	13'9" x 9'2"	128 sq. ft	Yes
19	Sitting Room	16'4" x 12'1"	195 sq. ft	Yes
20	Family Room	17'10" x 21'8"	283 sq. ft	Yes

4306 West Swann Avenue, Beach Park, Tampa, Hillsborough County, Florida, United States,



Room Dimensions

Floor 2

Total sqft: 1002

Living area: 1002

#	Room name	Dimensions	Area (sqft)	Counted as Living Area
21	Wc	3'5" x 5'3"	18 sq. ft	Yes
22	Bath	12'1" x 9'11"	92 sq. ft	Yes
23	Sitting Room	13'2" x 15'8"	206 sq. ft	Yes
24	Sitting Room	8'2" x 10'8"	114 sq. ft	Yes
25	Primary Bedroom	12'11" x 15'8"	202 sq. ft	Yes
26	W.i.c.	8'1" x 7'1"	48 sq. ft	Yes
27	W.i.c.	6'0" x 13'7"	78 sq. ft	Yes
28	Bedroom	10'3" x 8'7"	79 sq. ft	Yes
29	Hall	3'1" x 9'8"	30 sq. ft	Yes

4306 West Swann Avenue, Beach Park, Tampa, Hillsborough County, Florida, United States,

1 Floor 1 - Hall



Dimensions: 4'6" x 30'2"
Area: 116 sq. ft
Counted as Living Area:
Yes

Heated: Yes
Finished: Yes
Enclosed: Yes
Contiguous:
Yes
Permitted: Yes
Wet Space: No
Addition: No
Conversion: No

2 Floor 1 - Bath



Dimensions: 4'9" x 8'1"
Area: 39 sq. ft
Counted as Living Area:
Yes

Heated: Yes
Finished: Yes
Enclosed: Yes
Contiguous:
Yes
Permitted: Yes
Wet Space: Yes
Addition: No
Conversion: No

4306 West Swann Avenue, Beach Park, Tampa, Hillsborough County, Florida, United States,

3 Floor 1 - Dining Room



Dimensions: 19'0" x 12'8"
Area: 219 sq. ft
Counted as Living Area:
Yes

Heated: Yes
Finished: Yes
Enclosed: Yes
Contiguous:
Yes
Permitted: Yes
Wet Space: No
Addition: No
Conversion: No

4 Floor 1 - Pantry



Dimensions: 10'5" x 5'3"
Area: 54 sq. ft
Counted as Living Area:
Yes

Heated: Yes
Finished: Yes
Enclosed: Yes
Contiguous:
Yes
Permitted: Yes
Wet Space: No
Addition: No
Conversion: No

5 Floor 1 - Living Room



Dimensions: 24'7" x 28'1"
Area: 640 sq. ft
Counted as Living Area:
Yes

Heated: Yes
Finished: Yes
Enclosed: Yes
Contiguous:
Yes
Permitted: Yes
Wet Space: No
Addition: No
Conversion: No

4306 West Swann Avenue, Beach Park, Tampa, Hillsborough County, Florida, United States,

6 Floor 1 - W.i.c.



Dimensions: 3'11" x 4'6"
Area: 18 sq. ft
Counted as Living Area:
Yes

Heated: Yes
Finished: Yes
Enclosed: Yes
Contiguous:
Yes
Permitted: Yes
Wet Space: No
Addition: No
Conversion: No

7 Floor 1 - W.i.c.



Dimensions: 3'10" x 8'1"
Area: 31 sq. ft
Counted as Living Area:
Yes

Heated: Yes
Finished: Yes
Enclosed: Yes
Contiguous:
Yes
Permitted: Yes
Wet Space: No
Addition: No
Conversion: No

8 Floor 1 - Bedroom



Dimensions: 10'5" x 11'11"
Area: 124 sq. ft
Counted as Living Area:
Yes

Heated: Yes
Finished: Yes
Enclosed: Yes
Contiguous:
Yes
Permitted: Yes
Wet Space: No
Addition: No
Conversion: No

4306 West Swann Avenue, Beach Park, Tampa, Hillsborough County, Florida, United States,

9 Floor 1 - Kitchen



Dimensions: 18'10" x 21'6"
Area: 322 sq. ft
Counted as Living Area:
Yes

Heated: Yes
Finished: Yes
Enclosed: Yes
Contiguous:
Yes
Permitted: Yes
Wet Space: No
Addition: No
Conversion: No

10 Floor 1 - Bath



Dimensions: 7'1" x 8'3"
Area: 57 sq. ft
Counted as Living Area:
Yes

Heated: Yes
Finished: Yes
Enclosed: Yes
Contiguous:
Yes
Permitted: Yes
Wet Space: Yes
Addition: No
Conversion: No

11 Floor 1 - Foyer



Dimensions: 11'4" x 12'8"
Area: 103 sq. ft
Counted as Living Area:
Yes

Heated: Yes
Finished: Yes
Enclosed: Yes
Contiguous:
Yes
Permitted: Yes
Wet Space: No
Addition: No
Conversion: No

**4306 West Swann Avenue, Beach Park, Tampa,
Hillsborough County, Florida, United States,**

12 Floor 1 - Bath



Dimensions: 7'0" x 9'3"
Area: 55 sq. ft
Counted as Living Area:
Yes

Heated: Yes
Finished: Yes
Enclosed: Yes
Contiguous:
Yes
Permitted: Yes
Wet Space: Yes
Addition: No
Conversion: No

13 Floor 1 - Hall



Dimensions: 4'10" x 8'4"
Area: 35 sq. ft
Counted as Living Area:
Yes

Heated: Yes
Finished: Yes
Enclosed: Yes
Contiguous:
Yes
Permitted: Yes
Wet Space: No
Addition: No
Conversion: No

14 Floor 1 - Garage



Dimensions: 18'5" x 22'11"
Area: 422 sq. ft
Counted as Living Area: No

Heated: No
Finished: No
Enclosed: Yes
Contiguous: Yes
Permitted: Yes
Wet Space: No
Addition: No
Conversion: No

4306 West Swann Avenue, Beach Park, Tampa, Hillsborough County, Florida, United States,

15 Floor 1 - W.i.c.



Dimensions: 4'7" x 4'6"
Area: 21 sq. ft
Counted as Living Area:
Yes

Heated: Yes
Finished: Yes
Enclosed: Yes
Contiguous:
Yes
Permitted: Yes
Wet Space: No
Addition: No
Conversion: No

16 Floor 1 - Bath



Dimensions: 7'9" x 8'1"
Area: 50 sq. ft
Counted as Living Area:
Yes

Heated: Yes
Finished: Yes
Enclosed: Yes
Contiguous:
Yes
Permitted: Yes
Wet Space: Yes
Addition: No
Conversion: No

17 Floor 1 - Bedroom



Dimensions: 11'10" x 12'7"
Area: 150 sq. ft
Counted as Living Area:
Yes

Heated: Yes
Finished: Yes
Enclosed: Yes
Contiguous:
Yes
Permitted: Yes
Wet Space: No
Addition: No
Conversion: No

**4306 West Swann Avenue, Beach Park, Tampa,
Hillsborough County, Florida, United States,**

18 Floor 1 - Bedroom



Dimensions: 13'9" x 9'2"
Area: 128 sq. ft
Counted as Living Area:
Yes

Heated: Yes
Finished: Yes
Enclosed: Yes
Contiguous:
Yes
Permitted: Yes
Wet Space: No
Addition: No
Conversion: No

19 Floor 1 - Sitting Room



Dimensions: 16'4" x 12'1"
Area: 195 sq. ft
Counted as Living Area:
Yes

Heated: Yes
Finished: Yes
Enclosed: Yes
Contiguous:
Yes
Permitted: Yes
Wet Space: No
Addition: No
Conversion: No

20 Floor 1 - Family Room

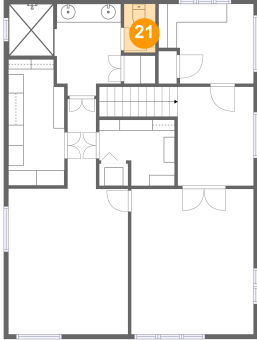


Dimensions: 17'10" x 21'8"
Area: 283 sq. ft
Counted as Living Area:
Yes

Heated: Yes
Finished: Yes
Enclosed: Yes
Contiguous:
Yes
Permitted: Yes
Wet Space: No
Addition: No
Conversion: No

4306 West Swann Avenue, Beach Park, Tampa, Hillsborough County, Florida, United States,

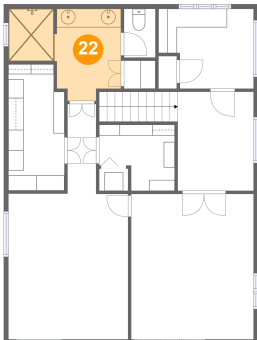
21 Floor 2 - Wc



Dimensions: 3'5" x 5'3"
Area: 18 sq. ft
Counted as Living Area:
Yes

Heated: Yes
Finished: Yes
Enclosed: Yes
Contiguous:
Yes
Permitted: Yes
Wet Space: Yes
Addition: No
Conversion: No

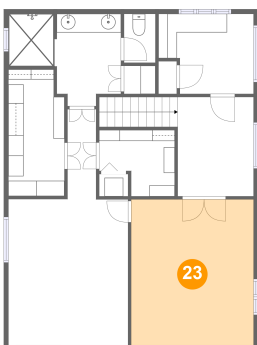
22 Floor 2 - Bath



Dimensions: 12'1" x 9'11"
Area: 92 sq. ft
Counted as Living Area:
Yes

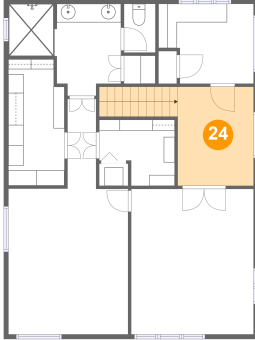
Heated: Yes
Finished: Yes
Enclosed: Yes
Contiguous:
Yes
Permitted: Yes
Wet Space: Yes
Addition: No
Conversion: No

23 Floor 2 - Sitting Room



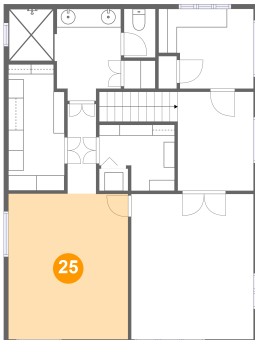
Dimensions: 13'2" x 15'8"
Area: 206 sq. ft
Counted as Living Area:
Yes

Heated: Yes
Finished: Yes
Enclosed: Yes
Contiguous:
Yes
Permitted: Yes
Wet Space: No
Addition: No
Conversion: No

**4306 West Swann Avenue, Beach Park, Tampa,
Hillsborough County, Florida, United States,****24 Floor 2 - Sitting Room**

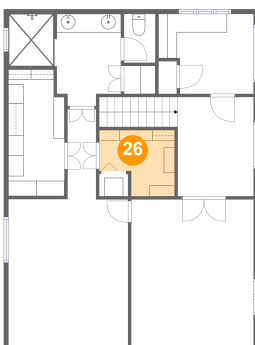
Dimensions: 8'2" x 10'8"
Area: 114 sq. ft
Counted as Living Area:
Yes

Heated: Yes
Finished: Yes
Enclosed: Yes
Contiguous:
Yes
Permitted: Yes
Wet Space: No
Addition: No
Conversion: No

25 Floor 2 - Primary Bedroom

Dimensions: 12'11" x 15'8"
Area: 202 sq. ft
Counted as Living Area:
Yes

Heated: Yes
Finished: Yes
Enclosed: Yes
Contiguous:
Yes
Permitted: Yes
Wet Space: No
Addition: No
Conversion: No

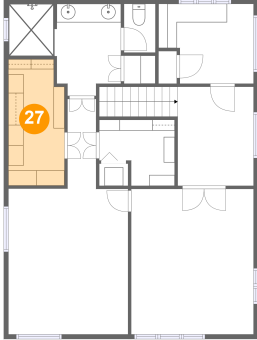
26 Floor 2 - W.i.c.

Dimensions: 8'1" x 7'1"
Area: 48 sq. ft
Counted as Living Area:
Yes

Heated: Yes
Finished: Yes
Enclosed: Yes
Contiguous:
Yes
Permitted: Yes
Wet Space: No
Addition: No
Conversion: No

**4306 West Swann Avenue, Beach Park, Tampa,
Hillsborough County, Florida, United States,**

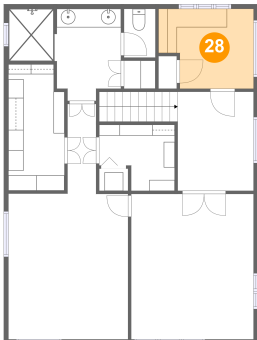
27 Floor 2 - W.i.c.



Dimensions: 6'0" x 13'7"
Area: 78 sq. ft
Counted as Living Area:
Yes

Heated: Yes
Finished: Yes
Enclosed: Yes
Contiguous:
Yes
Permitted: Yes
Wet Space: No
Addition: No
Conversion: No

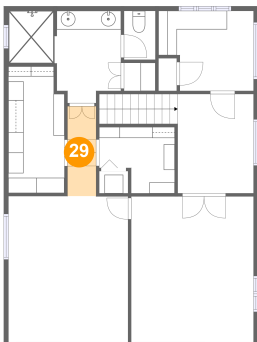
28 Floor 2 - Bedroom



Dimensions: 10'3" x 8'7"
Area: 79 sq. ft
Counted as Living Area:
Yes

Heated: Yes
Finished: Yes
Enclosed: Yes
Contiguous:
Yes
Permitted: Yes
Wet Space: No
Addition: No
Conversion: No

29 Floor 2 - Hall



Dimensions: 3'1" x 9'8"
Area: 30 sq. ft
Counted as Living Area:
Yes

Heated: Yes
Finished: Yes
Enclosed: Yes
Contiguous:
Yes
Permitted: Yes
Wet Space: No
Addition: No
Conversion: No