

Home report


213 Upland Dr,Hampton,VA,US

Powered by

CUBICASA




Property summary




0

Garages




4

Bedrooms



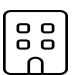
2

Bathrooms




1

Half baths




2

Floors



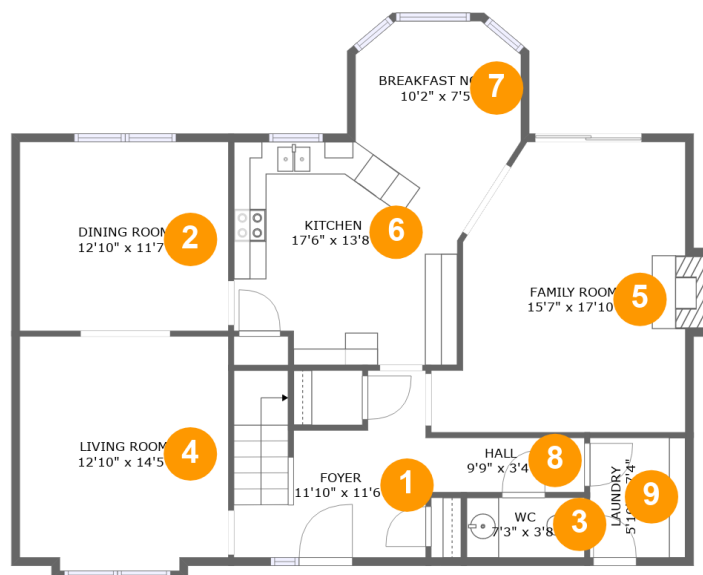
2,596

Gross living area sqft

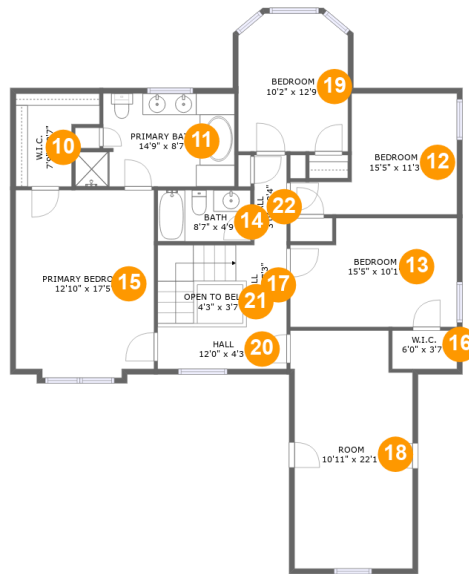


2,618

Total sqft

213 Upland Dr, Hampton, VA, US**Room dimensions****Floor 1****Total sqft: 1202 Living area: 1195**

#		Dimensions	sqft	Counted as living area
1	Foyer	11'10" x 11'6"	117 sq. ft	Yes
2	Dining Room	12'10" x 11'7"	149 sq. ft	Yes
3	WC	7'3" x 3'8"	27 sq. ft	Yes
4	Living Room	12'10" x 14'5"	180 sq. ft	Yes
5	Family Room	15'7" x 17'10"	245 sq. ft	Yes
6	Kitchen	17'6" x 13'8"	192 sq. ft	Yes
7	Breakfast Nook	10'2" x 7'5"	70 sq. ft	Yes
8	Hall	9'9" x 3'4"	33 sq. ft	Yes
9	Laundry	5'10" x 7'4"	43 sq. ft	Yes

213 Upland Dr, Hampton, VA, US**Room dimensions****Floor 2****Total sqft: 1416 Living area: 1401**

#		Dimensions	sqft	Counted as living area
10	W.I.C.	7'9" x 8'7"	52 sq. ft	Yes
11	Primary Bath	14'9" x 8'7"	113 sq. ft	Yes
12	Bedroom	15'5" x 11'3"	127 sq. ft	Yes
13	Bedroom	15'5" x 10'1"	145 sq. ft	Yes
14	Bath	8'7" x 4'9"	41 sq. ft	Yes
15	Primary Bedroom	12'10" x 17'5"	219 sq. ft	Yes
16	W.I.C.	6'0" x 3'7"	21 sq. ft	Yes
17	Hall	4'9" x 7'3"	72 sq. ft	Yes
18	Room	10'11" x 22'1"	234 sq. ft	Yes
19	Bedroom	10'2" x 12'9"	125 sq. ft	Yes
20	Hall	12'0" x 4'3"	50 sq. ft	Yes

Scan captured on Tue, 18 Mar 2025 15:08:03 GMT

Information is calculated by Cubicasa technology deemed highly reliable but not guaranteed.

213 Upland Dr, Hampton, VA, US

#		Dimensions	sqft	Counted as living area
21	Open To Below	4'3" x 3'7"	15 sq. ft	No
22	Hall	3'0" x 8'4"	25 sq. ft	Yes

1 Floor 1 - Foyer



Dimensions: 11'10" x 11'6"
Area: 117 sq. ft
Counted as living area: Yes

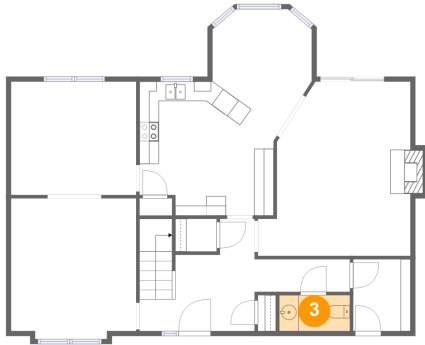
Heated: Yes
Finished: Yes
Enclosed: Yes
Contiguous: Yes
Permitted: Yes
Wet space: No
Addition: No
Conversion: No

2 Floor 1 - Dining Room



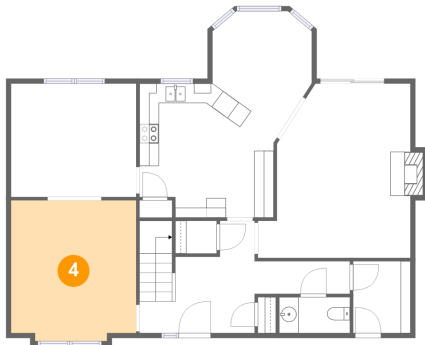
Dimensions: 12'10" x 11'7"
Area: 149 sq. ft
Counted as living area: Yes

Heated: Yes
Finished: Yes
Enclosed: Yes
Contiguous: Yes
Permitted: Yes
Wet space: No
Addition: No
Conversion: No

3 Floor 1 - WC

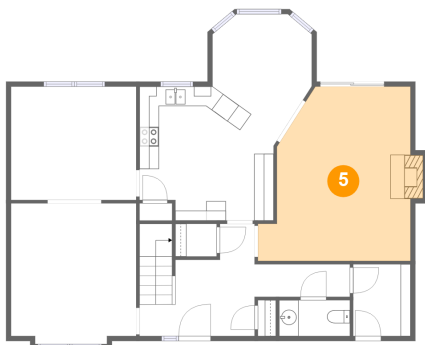
Dimensions: 7'3" x 3'8"
Area: 27 sq. ft
Counted as living area: Yes

Heated: Yes
Finished: Yes
Enclosed: Yes
Contiguous: Yes
Permitted: Yes
Wet space: Yes
Addition: No
Conversion: No

4 Floor 1 - Living Room

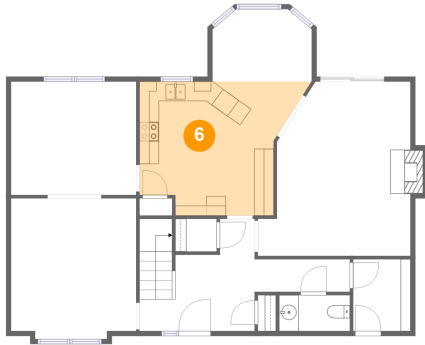
Dimensions: 12'10" x 14'5"
Area: 180 sq. ft
Counted as living area: Yes

Heated: Yes
Finished: Yes
Enclosed: Yes
Contiguous: Yes
Permitted: Yes
Wet space: No
Addition: No
Conversion: No

5 Floor 1 - Family Room

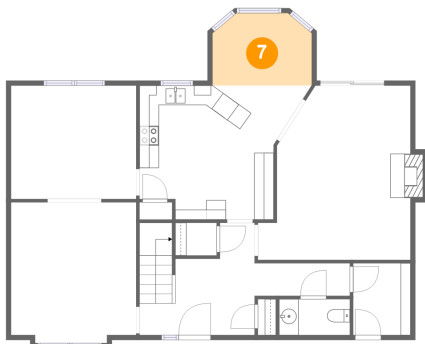
Dimensions: 15'7" x 17'10"
Area: 245 sq. ft
Counted as living area: Yes

Heated: Yes
Finished: Yes
Enclosed: Yes
Contiguous: Yes
Permitted: Yes
Wet space: No
Addition: No
Conversion: No

6 Floor 1 - Kitchen

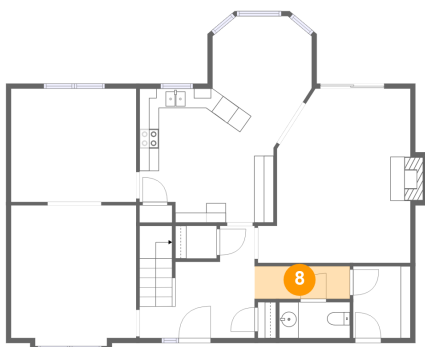
Dimensions: 17'6" x 13'8"
Area: 192 sq. ft
Counted as living area: Yes

Heated: Yes
Finished: Yes
Enclosed: Yes
Contiguous: Yes
Permitted: Yes
Wet space: No
Addition: No
Conversion: No

7 Floor 1 - Breakfast Nook

Dimensions: 10'2" x 7'5"
Area: 70 sq. ft
Counted as living area: Yes

Heated: Yes
Finished: Yes
Enclosed: Yes
Contiguous: Yes
Permitted: Yes
Wet space: No
Addition: No
Conversion: No

8 Floor 1 - Hall

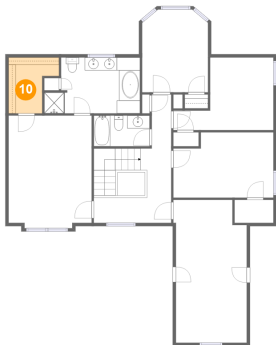
Dimensions: 9'9" x 3'4"
Area: 33 sq. ft
Counted as living area: Yes

Heated: Yes
Finished: Yes
Enclosed: Yes
Contiguous: Yes
Permitted: Yes
Wet space: No
Addition: No
Conversion: No

9 Floor 1 - Laundry

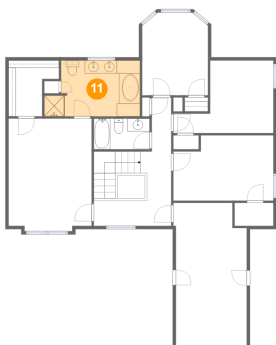
Dimensions: 5'10" x 7'4"
Area: 43 sq. ft
Counted as living area: Yes

Heated: Yes
Finished: Yes
Enclosed: Yes
Contiguous: Yes
Permitted: Yes
Wet space: No
Addition: No
Conversion: No

10 Floor 2 - W.I.C.

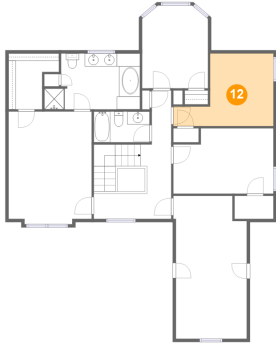
Dimensions: 7'9" x 8'7"
Area: 52 sq. ft
Counted as living area: Yes

Heated: Yes
Finished: Yes
Enclosed: Yes
Contiguous: Yes
Permitted: Yes
Wet space: No
Addition: No
Conversion: No

11 Floor 2 - Primary Bath

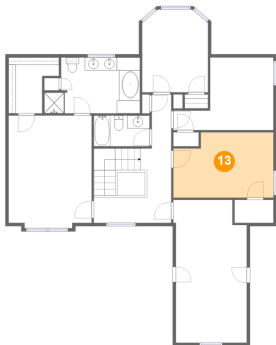
Dimensions: 14'9" x 8'7"
Area: 113 sq. ft
Counted as living area: Yes

Heated: Yes
Finished: Yes
Enclosed: Yes
Contiguous: Yes
Permitted: Yes
Wet space: Yes
Addition: No
Conversion: No

12 Floor 2 - Bedroom

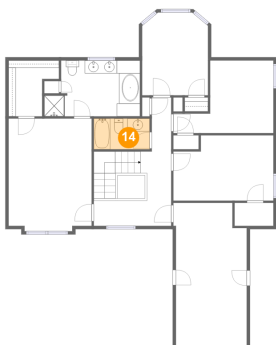
Dimensions: 15'5" x 11'3"
Area: 127 sq. ft
Counted as living area: Yes

Heated: Yes
Finished: Yes
Enclosed: Yes
Contiguous: Yes
Permitted: Yes
Wet space: No
Addition: No
Conversion: No

13 Floor 2 - Bedroom

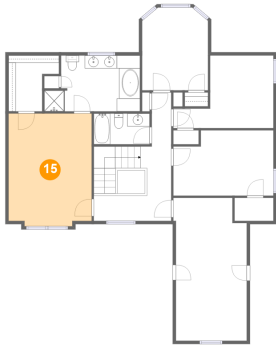
Dimensions: 15'5" x 10'1"
Area: 145 sq. ft
Counted as living area: Yes

Heated: Yes
Finished: Yes
Enclosed: Yes
Contiguous: Yes
Permitted: Yes
Wet space: No
Addition: No
Conversion: No

14 Floor 2 - Bath

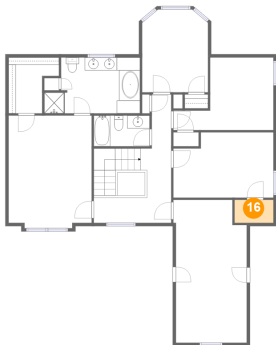
Dimensions: 8'7" x 4'9"
Area: 41 sq. ft
Counted as living area: Yes

Heated: Yes
Finished: Yes
Enclosed: Yes
Contiguous: Yes
Permitted: Yes
Wet space: Yes
Addition: No
Conversion: No

15 Floor 2 - Primary Bedroom

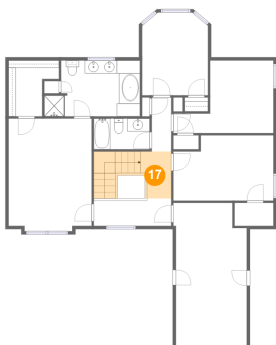
Dimensions: 12'10" x 17'5"
Area: 219 sq. ft
Counted as living area: Yes

Heated: Yes
Finished: Yes
Enclosed: Yes
Contiguous: Yes
Permitted: Yes
Wet space: No
Addition: No
Conversion: No

16 Floor 2 - W.I.C.

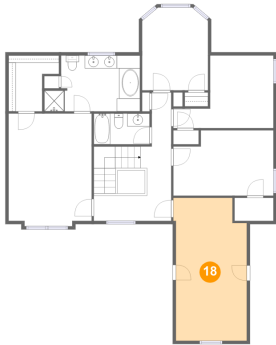
Dimensions: 6'0" x 3'7"
Area: 21 sq. ft
Counted as living area: Yes

Heated: Yes
Finished: Yes
Enclosed: Yes
Contiguous: Yes
Permitted: Yes
Wet space: No
Addition: No
Conversion: No

17 Floor 2 - Hall

Dimensions: 4'9" x 7'3"
Area: 72 sq. ft
Counted as living area: Yes

Heated: Yes
Finished: Yes
Enclosed: Yes
Contiguous: Yes
Permitted: Yes
Wet space: No
Addition: No
Conversion: No

18 Floor 2 - Room

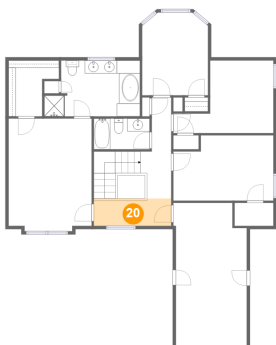
Dimensions: 10'11" x 22'1"
Area: 234 sq. ft
Counted as living area: Yes

Heated: Yes
Finished: Yes
Enclosed: Yes
Contiguous: Yes
Permitted: Yes
Wet space: No
Addition: No
Conversion: No

19 Floor 2 - Bedroom

Dimensions: 10'2" x 12'9"
Area: 125 sq. ft
Counted as living area: Yes

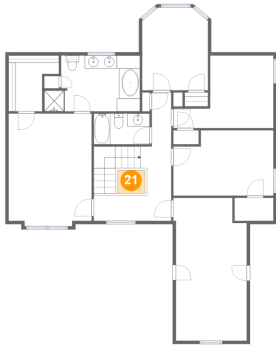
Heated: Yes
Finished: Yes
Enclosed: Yes
Contiguous: Yes
Permitted: Yes
Wet space: No
Addition: No
Conversion: No

20 Floor 2 - Hall

Dimensions: 12'0" x 4'3"
Area: 50 sq. ft
Counted as living area: Yes

Heated: Yes
Finished: Yes
Enclosed: Yes
Contiguous: Yes
Permitted: Yes
Wet space: No
Addition: No
Conversion: No

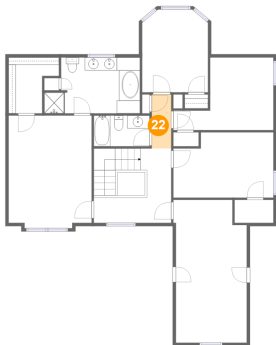
21 Floor 2 - Open To Below



Dimensions: 4'3" x 3'7"
Area: 15 sq. ft
Counted as living area: No

Heated: No
Finished: No
Enclosed: No
Contiguous: Yes
Permitted: No
Wet space: No
Addition: No
Conversion: No

22 Floor 2 - Hall



Dimensions: 3'0" x 8'4"
Area: 25 sq. ft
Counted as living area: Yes

Heated: Yes
Finished: Yes
Enclosed: Yes
Contiguous: Yes
Permitted: Yes
Wet space: No
Addition: No
Conversion: No