



# 34 CHESAPEAKE AVE



Lainey Bonsell & Teresita Link

**LTHOME.ca**

*Bringing your dreams home.*

**ROYAL LEPAGE**  
Estate Realty  
BROKERAGE INDEPENDENTLY OWNED AND OPERATED



*For more information on*

**34 CHESAPEAKE AVE**



Details:

Welcome Home to this updated, move-in ready, 3 bedroom semi with inlaw suite and separate entrance to basement.

Bright living space with south facing windows and walk-out to 2-tier back deck. Private drive plus walk to Warden Subway, Scarborough GO and future Eglinton LRT.

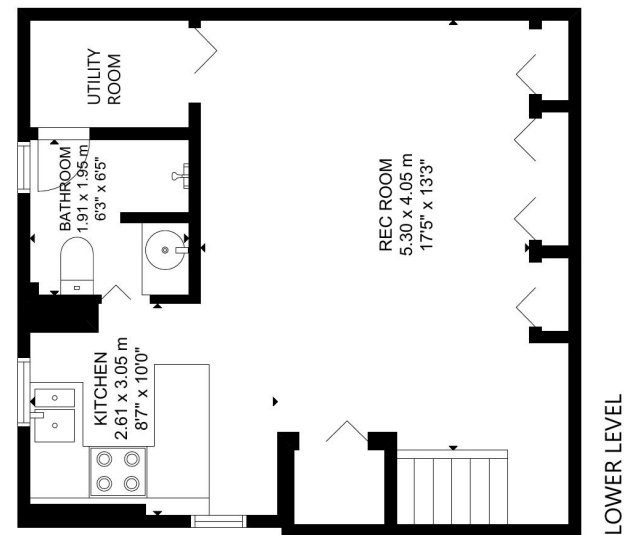
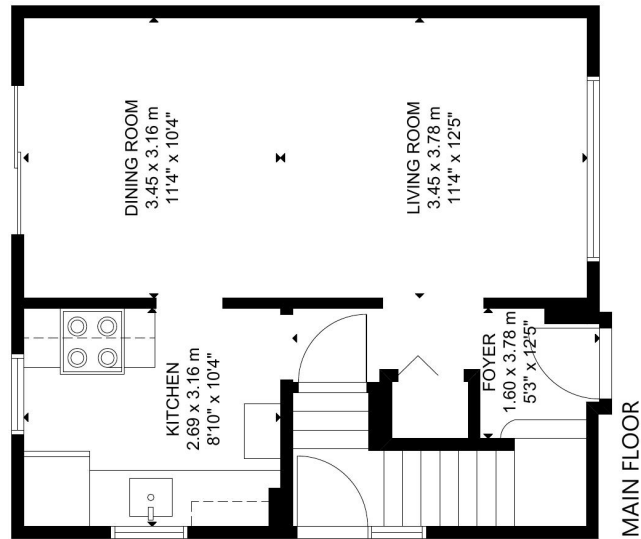
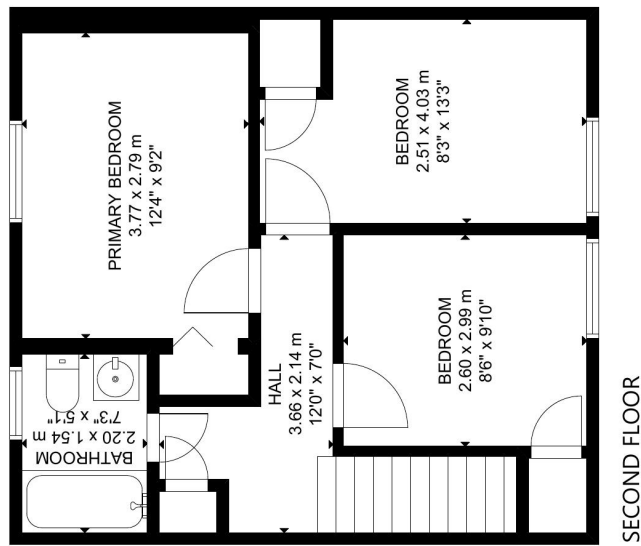
Close To schools, parks, bike & hiking trails and every amenity.



*Visit*

[www.LTHome.ca](http://www.LTHome.ca)





GROSS INTERNAL AREA  
 MAIN FLOOR: 44 m<sup>2</sup>/469 sq. ft. SECOND FLOOR: 43 m<sup>2</sup>/468 sq. ft.  
 LOWER LEVEL: 41 m<sup>2</sup>/438 sq. ft.  
 TOTAL: 128 m<sup>2</sup>/1,375 sq. ft.  
 SIZE AND DIMENSIONS ARE APPROXIMATE. ACTUAL MAY VARY.

Not intended to solicit buyers or sellers currently under contract with another Brokerage



Lainey Bonsell & Teresita Link

LTHOME.ca

Bringing your dreams home.

Presented by:

Lainey Bonsell, Broker

Royal LePage Estate Realty, Brokerage

Lainey@LTHome.ca

416-526-9970