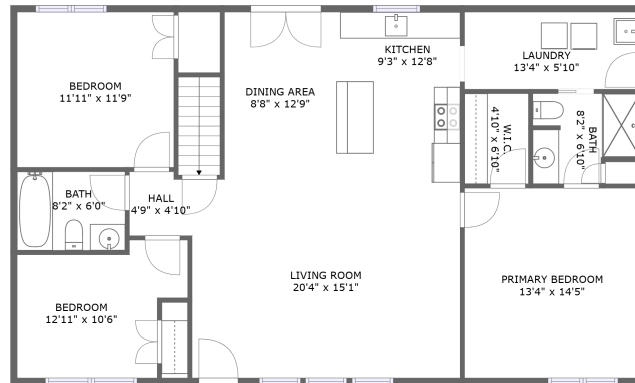
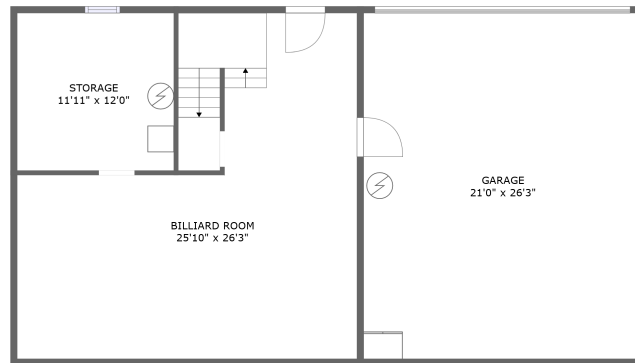


# 651 Geoghegan Rd, Shelbyville, KY, US

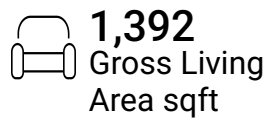


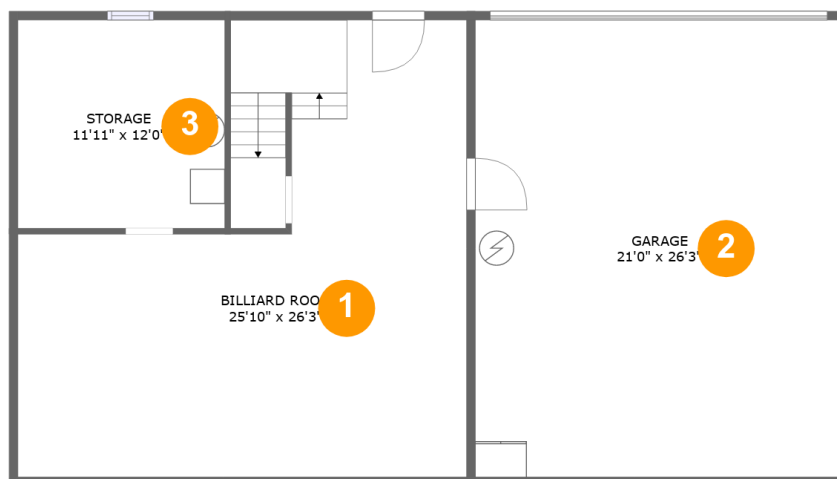
FLOOR 2



FLOOR 1

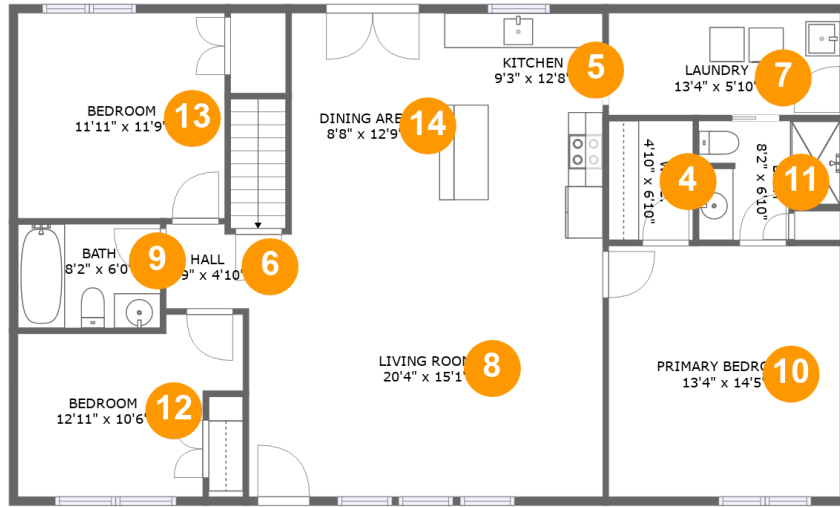
## Property Summary



**651 Geoghegan Rd, Shelbyville, KY, US****Room Dimensions****Floor 1****Total sqft: 1319****Living area: 0**

#	Room name	Dimensions	Area (sqft)	Counted as Living Area
1	Billiard Room	25'10" x 26'3"	467 sq. ft	No
2	Garage	21'0" x 26'3"	552 sq. ft	No
3	Storage	11'11" x 12'0"	143 sq. ft	No

# 651 Geoghegan Rd, Shelbyville, KY, US



## Room Dimensions

Floor 2

Total sqft: 1392

Living area: 1392

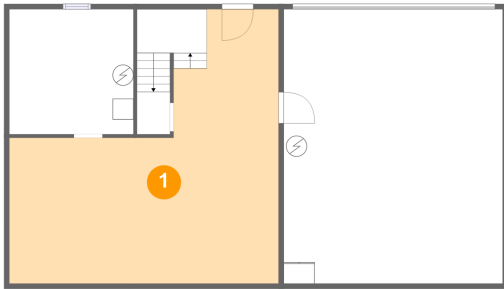
#	Room name	Dimensions	Area (sqft)	Counted as Living Area
4	W.i.c.	4'10" x 6'10"	33 sq. ft	Yes
5	Kitchen	9'3" x 12'8"	117 sq. ft	Yes
6	Hall	4'9" x 4'10"	22 sq. ft	Yes
7	Laundry	13'4" x 5'10"	78 sq. ft	Yes
8	Living Room	20'4" x 15'1"	308 sq. ft	Yes
9	Bath	8'2" x 6'0"	49 sq. ft	Yes
10	Primary Bedroom	13'4" x 14'5"	192 sq. ft	Yes
11	Bath	8'2" x 6'10"	49 sq. ft	Yes
12	Bedroom	12'11" x 10'6"	112 sq. ft	Yes
13	Bedroom	11'11" x 11'9"	140 sq. ft	Yes
14	Dining Area	8'8" x 12'9"	110 sq. ft	Yes

Scan captured on Wed, 02 Oct 2024 13:54:05 GMT

Information is calculated by CubiCasa technology; deemed highly reliable but not guaranteed.

# 651 Geoghegan Rd, Shelbyville, KY, US

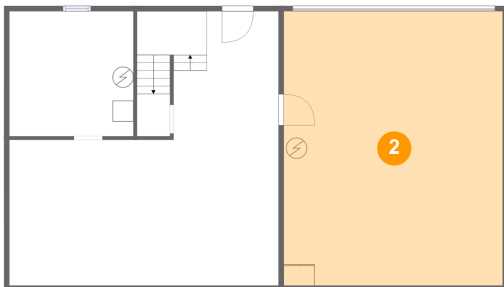
## 1 Floor 1 - Billiard Room



Dimensions: 25'10" x 26'3"  
Area: 467 sq. ft  
Counted as Living Area: No

Heated: Yes  
Finished: Yes  
Enclosed: Yes  
Contiguous: No  
Permitted: Yes  
Wet Space: No  
Addition: No  
Conversion: No

## 2 Floor 1 - Garage

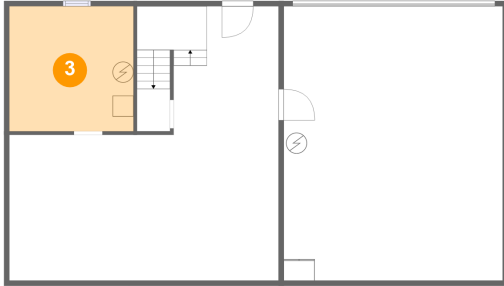


Dimensions: 21'0" x 26'3"  
Area: 552 sq. ft  
Counted as Living Area: No

Heated: No  
Finished: No  
Enclosed: Yes  
Contiguous: Yes  
Permitted: Yes  
Wet Space: No  
Addition: No  
Conversion: No

# 651 Geoghegan Rd, Shelbyville, KY, US

## 3 Floor 1 - Storage



Dimensions: 11'11" x 12'0"  
Area: 143 sq. ft  
Counted as Living Area: No

Heated: No  
Finished: No  
Enclosed: No  
Contiguous: Yes  
Permitted: Yes  
Wet Space: No  
Addition: No  
Conversion: No

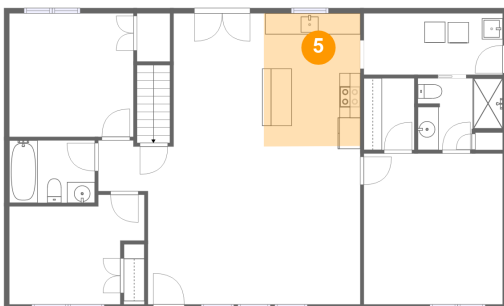
## 4 Floor 2 - W.i.c.



Dimensions: 4'10" x 6'10"  
Area: 33 sq. ft  
Counted as Living Area: Yes

Heated: Yes  
Finished: Yes  
Enclosed: Yes  
Contiguous: Yes  
Permitted: Yes  
Wet Space: No  
Addition: No  
Conversion: No

## 5 Floor 2 - Kitchen



Dimensions: 9'3" x 12'8"  
Area: 117 sq. ft  
Counted as Living Area: Yes

Heated: Yes  
Finished: Yes  
Enclosed: Yes  
Contiguous: Yes  
Permitted: Yes  
Wet Space: No  
Addition: No  
Conversion: No

# 651 Geoghegan Rd, Shelbyville, KY, US

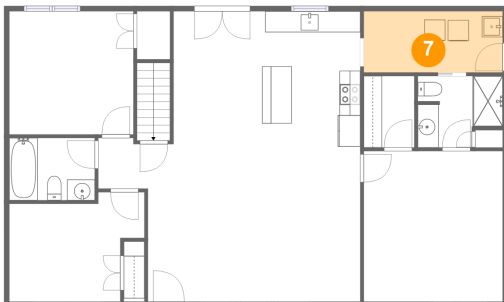
## 6 Floor 2 - Hall



Dimensions: 4'9" x 4'10"  
Area: 22 sq. ft  
Counted as Living Area:  
Yes

Heated: Yes  
Finished: Yes  
Enclosed: Yes  
Contiguous:  
Yes  
Permitted: Yes  
Wet Space: No  
Addition: No  
Conversion: No

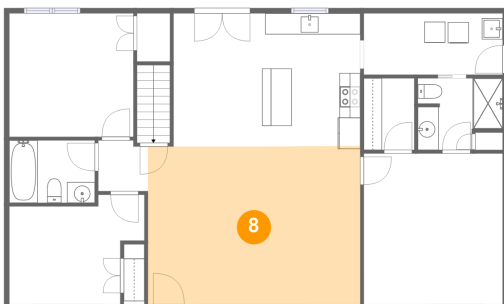
## 7 Floor 2 - Laundry



Dimensions: 13'4" x 5'10"  
Area: 78 sq. ft  
Counted as Living Area:  
Yes

Heated: Yes  
Finished: Yes  
Enclosed: Yes  
Contiguous:  
Yes  
Permitted: Yes  
Wet Space: No  
Addition: No  
Conversion: No

## 8 Floor 2 - Living Room

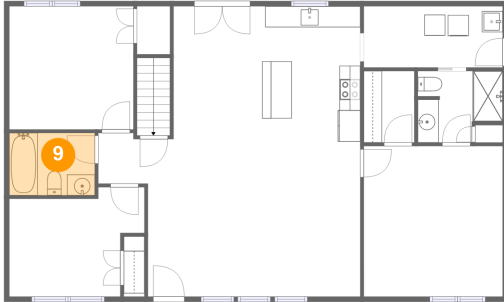


Dimensions: 20'4" x 15'1"  
Area: 308 sq. ft  
Counted as Living Area:  
Yes

Heated: Yes  
Finished: Yes  
Enclosed: Yes  
Contiguous:  
Yes  
Permitted: Yes  
Wet Space: No  
Addition: No  
Conversion: No

# 651 Geoghegan Rd, Shelbyville, KY, US

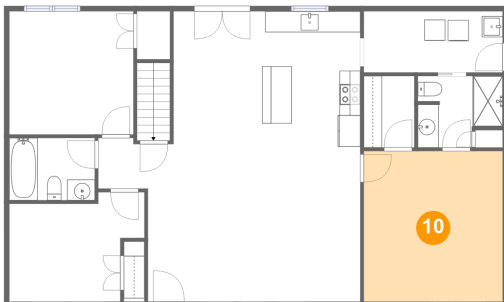
## 9 Floor 2 - Bath



Dimensions: 8'2" x 6'0"  
Area: 49 sq. ft  
Counted as Living Area:  
Yes

Heated: Yes  
Finished: Yes  
Enclosed: Yes  
Contiguous:  
Yes  
Permitted: Yes  
Wet Space: Yes  
Addition: No  
Conversion: No

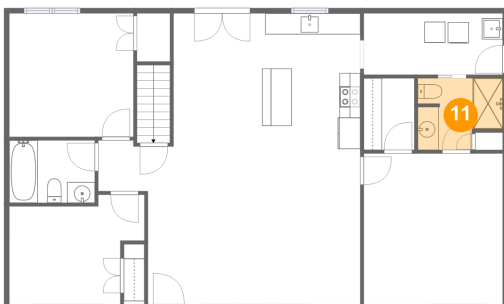
## 10 Floor 2 - Primary Bedroom



Dimensions: 13'4" x 14'5"  
Area: 192 sq. ft  
Counted as Living Area:  
Yes

Heated: Yes  
Finished: Yes  
Enclosed: Yes  
Contiguous:  
Yes  
Permitted: Yes  
Wet Space: No  
Addition: No  
Conversion: No

## 11 Floor 2 - Bath

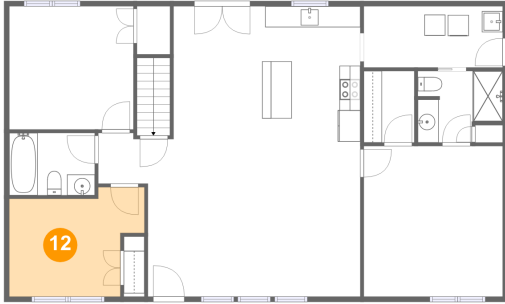


Dimensions: 8'2" x 6'10"  
Area: 49 sq. ft  
Counted as Living Area:  
Yes

Heated: Yes  
Finished: Yes  
Enclosed: Yes  
Contiguous:  
Yes  
Permitted: Yes  
Wet Space: Yes  
Addition: No  
Conversion: No

# 651 Geoghegan Rd, Shelbyville, KY, US

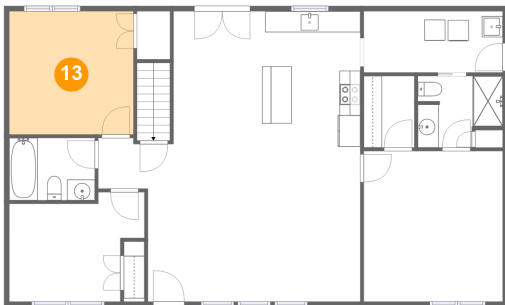
## 12 Floor 2 - Bedroom



Dimensions: 12'11" x 10'6"  
Area: 112 sq. ft  
Counted as Living Area:  
Yes

Heated: Yes  
Finished: Yes  
Enclosed: Yes  
Contiguous:  
Yes  
Permitted: Yes  
Wet Space: No  
Addition: No  
Conversion: No

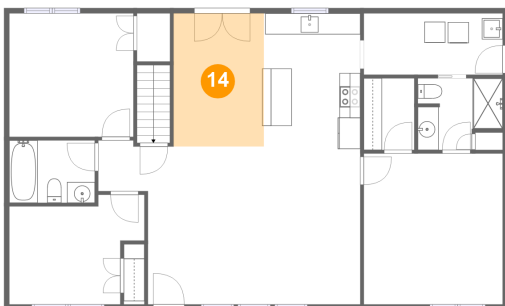
## 13 Floor 2 - Bedroom



Dimensions: 11'11" x 11'9"  
Area: 140 sq. ft  
Counted as Living Area:  
Yes

Heated: Yes  
Finished: Yes  
Enclosed: Yes  
Contiguous:  
Yes  
Permitted: Yes  
Wet Space: No  
Addition: No  
Conversion: No

## 14 Floor 2 - Dining Area



Dimensions: 8'8" x 12'9"  
Area: 110 sq. ft  
Counted as Living Area:  
Yes

Heated: Yes  
Finished: Yes  
Enclosed: Yes  
Contiguous:  
Yes  
Permitted: Yes  
Wet Space: No  
Addition: No  
Conversion: No