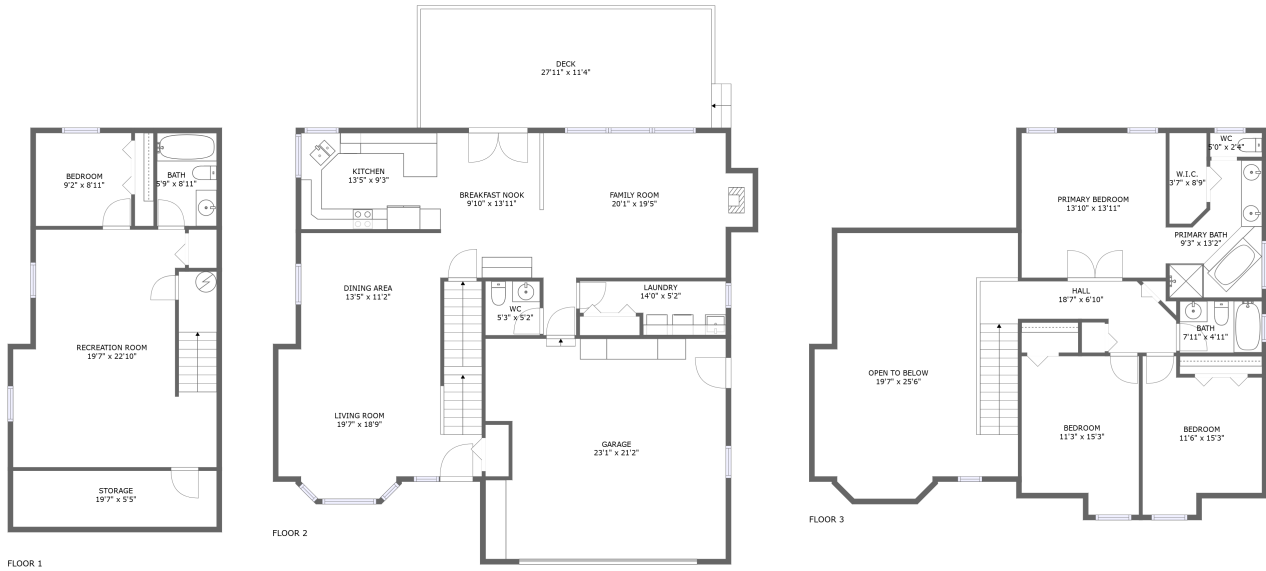


2228 Cassia Street, Pocatello, Bannock County, Idaho, United States, 83201




Property Summary


 **1** garages

 **4** bedrooms

 **3** bathrooms

 **1** half baths

 **3** floors

 **2,729** Gross Living Area sqft

 **4,107** total sqft

2228 Cassia Street, Pocatello, Bannock County, Idaho, United States, 83201



Room Dimensions

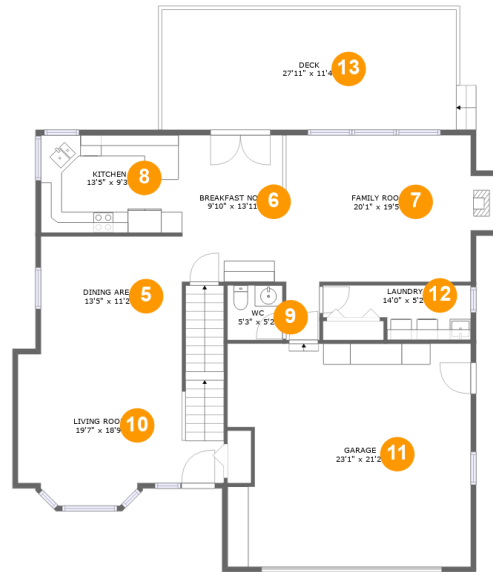
Floor 1

Total sqft: 753

Living area: 632

#	Room name	Dimensions	Area (sqft)	Counted as Living Area
1	Storage	19'7" x 5'5"	106 sq. ft	No
2	Bedroom	9'2" x 8'11"	82 sq. ft	Yes
3	Recreation Room	19'7" x 22'10"	405 sq. ft	Yes
4	Bath	5'9" x 8'11"	51 sq. ft	Yes

2228 Cassia Street, Pocatello, Bannock County, Idaho, United States, 83201



Room Dimensions

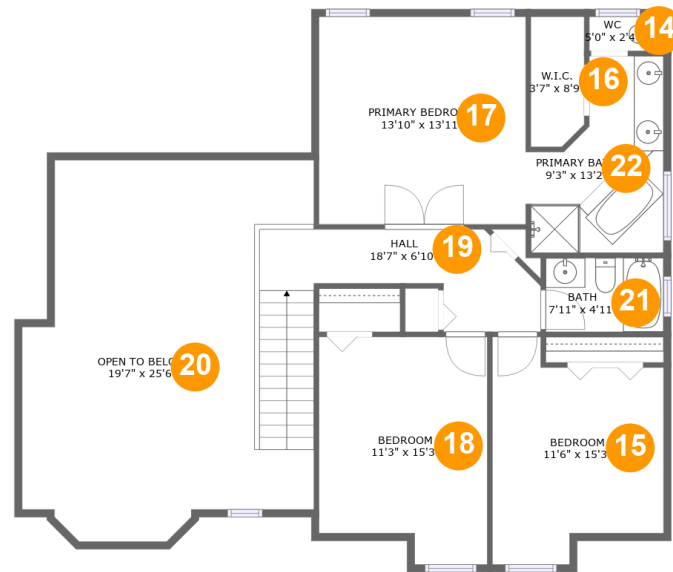
Floor 2

Total sqft: 1994

Living area: 1174

#	Room name	Dimensions	Area (sqft)	Counted as Living Area
5	Dining Area	13'5" x 11'2"	150 sq. ft	Yes
6	Breakfast Nook	9'10" x 13'11"	137 sq. ft	Yes
7	Family Room	20'1" x 19'5"	275 sq. ft	Yes
8	Kitchen	13'5" x 9'3"	124 sq. ft	Yes
9	Wc	5'3" x 5'2"	27 sq. ft	Yes
10	Living Room	19'7" x 18'9"	279 sq. ft	Yes
11	Garage	23'1" x 21'2"	474 sq. ft	No
12	Laundry	14'0" x 5'2"	60 sq. ft	Yes
13	Deck	27'11" x 11'4"	319 sq. ft	No

2228 Cassia Street, Pocatello, Bannock County, Idaho, United States, 83201



Room Dimensions

Floor 3

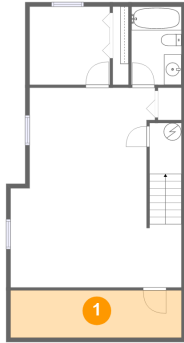
Total sqft: 1360

Living area: 923

#	Room name	Dimensions	Area (sqft)	Counted as Living Area
14	Wc	5'0" x 2'4"	11 sq. ft	Yes
15	Bedroom	11'6" x 15'3"	145 sq. ft	Yes
16	W.i.c.	3'7" x 8'9"	30 sq. ft	Yes
17	Primary Bedroom	13'10" x 13'11"	193 sq. ft	Yes
18	Bedroom	11'3" x 15'3"	159 sq. ft	Yes
19	Hall	18'7" x 6'10"	129 sq. ft	Yes
20	Open To Below	19'7" x 25'6"	390 sq. ft	No
21	Bath	7'11" x 4'11"	39 sq. ft	Yes
22	Primary Bath	9'3" x 13'2"	95 sq. ft	Yes

2228 Cassia Street, Pocatello, Bannock County, Idaho, United States, 83201

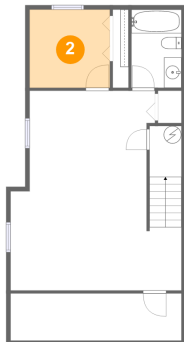
1 Floor 1 - Storage



Dimensions: 19'7" x 5'5"
Area: 106 sq. ft
Counted as Living Area: No

Heated: No
Finished: No
Enclosed: No
Contiguous: Yes
Permitted: Yes
Wet Space: No
Addition: No
Conversion: No

2 Floor 1 - Bedroom



Dimensions: 9'2" x 8'11"
Area: 82 sq. ft
Counted as Living Area: Yes

Heated: Yes
Finished: Yes
Enclosed: Yes
Contiguous: Yes
Permitted: Yes
Wet Space: No
Addition: No
Conversion: No

2228 Cassia Street, Pocatello, Bannock County, Idaho, United States, 83201

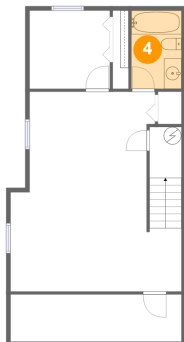
3 Floor 1 - Recreation Room



Dimensions: 19'7" x 22'10"
Area: 405 sq. ft
Counted as Living Area:
Yes

Heated: Yes
Finished: Yes
Enclosed: Yes
Contiguous:
Yes
Permitted: Yes
Wet Space: No
Addition: No
Conversion: No

4 Floor 1 - Bath



Dimensions: 5'9" x 8'11"
Area: 51 sq. ft
Counted as Living Area:
Yes

Heated: Yes
Finished: Yes
Enclosed: Yes
Contiguous:
Yes
Permitted: Yes
Wet Space: Yes
Addition: No
Conversion: No

5 Floor 2 - Dining Area



Dimensions: 13'5" x 11'2"
Area: 150 sq. ft
Counted as Living Area:
Yes

Heated: Yes
Finished: Yes
Enclosed: Yes
Contiguous:
Yes
Permitted: Yes
Wet Space: No
Addition: No
Conversion: No

2228 Cassia Street, Pocatello, Bannock County, Idaho, United States, 83201

6 Floor 2 - Breakfast Nook



Dimensions: 9'10" x 13'11"
Area: 137 sq. ft
Counted as Living Area:
Yes

Heated: Yes
Finished: Yes
Enclosed: Yes
Contiguous:
Yes
Permitted: Yes
Wet Space: No
Addition: No
Conversion: No

7 Floor 2 - Family Room



Dimensions: 20'1" x 19'5"
Area: 275 sq. ft
Counted as Living Area:
Yes

Heated: Yes
Finished: Yes
Enclosed: Yes
Contiguous:
Yes
Permitted: Yes
Wet Space: No
Addition: No
Conversion: No

8 Floor 2 - Kitchen



Dimensions: 13'5" x 9'3"
Area: 124 sq. ft
Counted as Living Area:
Yes

Heated: Yes
Finished: Yes
Enclosed: Yes
Contiguous:
Yes
Permitted: Yes
Wet Space: No
Addition: No
Conversion: No

2228 Cassia Street, Pocatello, Bannock County, Idaho, United States, 83201

9 Floor 2 - Wc



Dimensions: 5'3" x 5'2"
Area: 27 sq. ft
Counted as Living Area:
Yes

Heated: Yes
Finished: Yes
Enclosed: Yes
Contiguous:
Yes
Permitted: Yes
Wet Space: Yes
Addition: No
Conversion: No

10 Floor 2 - Living Room



Dimensions: 19'7" x 18'9"
Area: 279 sq. ft
Counted as Living Area:
Yes

Heated: Yes
Finished: Yes
Enclosed: Yes
Contiguous:
Yes
Permitted: Yes
Wet Space: No
Addition: No
Conversion: No

11 Floor 2 - Garage



Dimensions: 23'1" x 21'2"
Area: 474 sq. ft
Counted as Living Area: No

Heated: No
Finished: No
Enclosed: Yes
Contiguous: Yes
Permitted: Yes
Wet Space: No
Addition: No
Conversion: No

2228 Cassia Street, Pocatello, Bannock County, Idaho, United States, 83201

12 Floor 2 - Laundry



Dimensions: 14'0" x 5'2"
Area: 60 sq. ft
Counted as Living Area:
Yes

Heated: Yes
Finished: Yes
Enclosed: Yes
Contiguous:
Yes
Permitted: Yes
Wet Space: No
Addition: No
Conversion: No

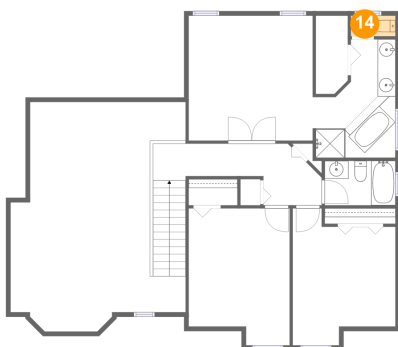
13 Floor 2 - Deck



Dimensions: 27'11" x 11'4"
Area: 319 sq. ft
Counted as Living Area: No

Heated: No
Finished: No
Enclosed: No
Contiguous: Yes
Permitted: Yes
Wet Space: No
Addition: No
Conversion: No

14 Floor 3 - Wc

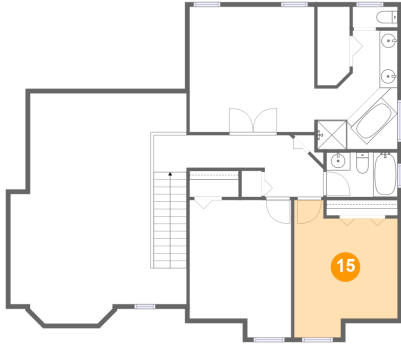


Dimensions: 5'0" x 2'4"
Area: 11 sq. ft
Counted as Living Area:
Yes

Heated: Yes
Finished: Yes
Enclosed: Yes
Contiguous:
Yes
Permitted: Yes
Wet Space: Yes
Addition: No
Conversion: No

**2228 Cassia Street, Pocatello, Bannock County,
Idaho, United States, 83201**

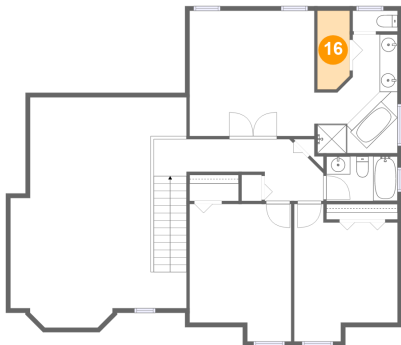
15 Floor 3 - Bedroom



Dimensions: 11'6" x 15'3"
Area: 145 sq. ft
Counted as Living Area:
Yes

Heated: Yes
Finished: Yes
Enclosed: Yes
Contiguous:
Yes
Permitted: Yes
Wet Space: No
Addition: No
Conversion: No

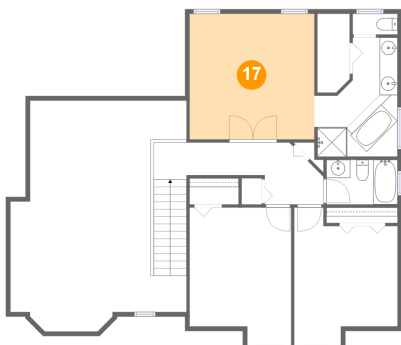
16 Floor 3 - W.i.c.



Dimensions: 3'7" x 8'9"
Area: 30 sq. ft
Counted as Living Area:
Yes

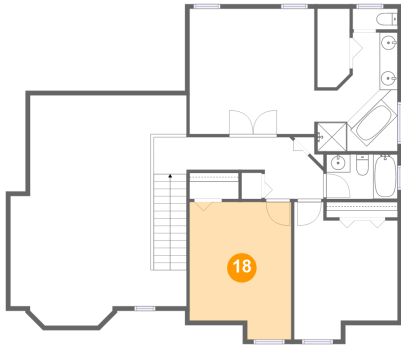
Heated: Yes
Finished: Yes
Enclosed: Yes
Contiguous:
Yes
Permitted: Yes
Wet Space: No
Addition: No
Conversion: No

17 Floor 3 - Primary Bedroom



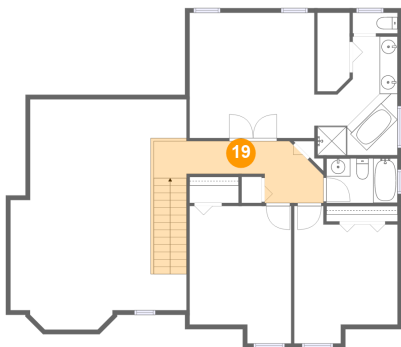
Dimensions: 13'10" x 13'11"
Area: 193 sq. ft
Counted as Living Area:
Yes

Heated: Yes
Finished: Yes
Enclosed: Yes
Contiguous:
Yes
Permitted: Yes
Wet Space: No
Addition: No
Conversion: No

**2228 Cassia Street, Pocatello, Bannock County,
Idaho, United States, 83201****18 Floor 3 - Bedroom**

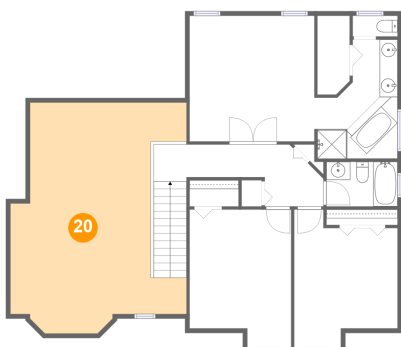
Dimensions: 11'3" x 15'3"
Area: 159 sq. ft
Counted as Living Area:
Yes

Heated: Yes
Finished: Yes
Enclosed: Yes
Contiguous:
Yes
Permitted: Yes
Wet Space: No
Addition: No
Conversion: No

19 Floor 3 - Hall

Dimensions: 18'7" x 6'10"
Area: 129 sq. ft
Counted as Living Area:
Yes

Heated: Yes
Finished: Yes
Enclosed: Yes
Contiguous:
Yes
Permitted: Yes
Wet Space: No
Addition: No
Conversion: No

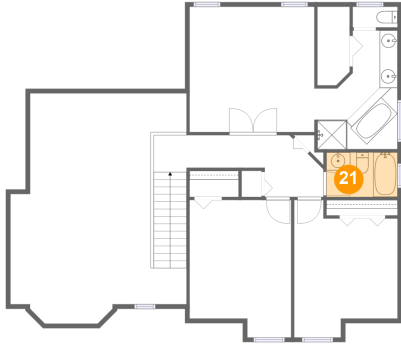
20 Floor 3 - Open To Below

Dimensions: 19'7" x 25'6"
Area: 390 sq. ft
Counted as Living Area: No

Heated: No
Finished: No
Enclosed: No
Contiguous: Yes
Permitted: No
Wet Space: No
Addition: No
Conversion: No

2228 Cassia Street, Pocatello, Bannock County, Idaho, United States, 83201

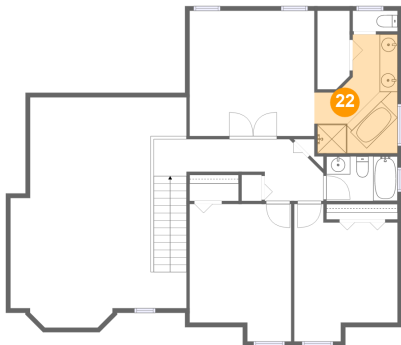
21 Floor 3 - Bath



Dimensions: 7'11" x 4'11"
Area: 39 sq. ft
Counted as Living Area:
Yes

Heated: Yes
Finished: Yes
Enclosed: Yes
Contiguous:
Yes
Permitted: Yes
Wet Space: Yes
Addition: No
Conversion: No

22 Floor 3 - Primary Bath



Dimensions: 9'3" x 13'2"
Area: 95 sq. ft
Counted as Living Area:
Yes

Heated: Yes
Finished: Yes
Enclosed: Yes
Contiguous:
Yes
Permitted: Yes
Wet Space: Yes
Addition: No
Conversion: No