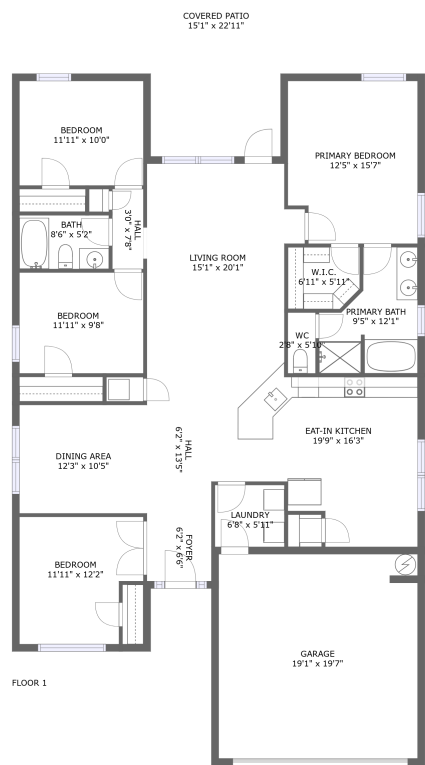




Home report


221 Alonzo Toney Drive, Triana, Madison, Madison County, Alabama, United States, 35756




Property summary

 **1** Garages

 **4** Bedrooms

 **2** Bathrooms

 **0** Half baths

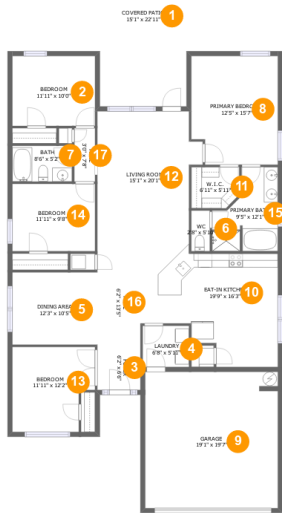
 **1** Floors

 **1,868** Gross living area sqft

 **2,606** Total sqft

Home report

221 Alonzo Toney Drive, Triana, Madison, Madison County, Alabama, United States, 35756



Room dimensions

Floor 1 Total sqft: 2606 Living area: 1868

#		Dimensions	sqft	Counted as living area
1	Covered Patio	15'1" x 22'11"	325 sq. ft	No
2	Bedroom	11'11" x 10'0"	119 sq. ft	Yes
3	Foyer	6'2" x 6'6"	40 sq. ft	Yes
4	Laundry	6'8" x 5'11"	39 sq. ft	Yes
5	Dining Area	12'3" x 10'5"	127 sq. ft	Yes
6	WC	2'8" x 5'10"	15 sq. ft	Yes
7	Bath	8'6" x 5'2"	44 sq. ft	Yes
8	Primary Bedroom	12'5" x 15'7"	187 sq. ft	Yes
9	Garage	19'1" x 19'7"	371 sq. ft	No
10	Eat-in Kitchen	19'9" x 16'3"	266 sq. ft	Yes
11	W.I.C.	6'11" x 5'11"	39 sq. ft	Yes

Home report

**221 Alonzo Toney Drive, Triana, Madison, Madison County,
Alabama, United States, 35756**

#		Dimensions	sqft	Counted as living area
12	Living Room	15'1" x 20'1"	271 sq. ft	Yes
13	Bedroom	11'11" x 12'2"	131 sq. ft	Yes
14	Bedroom	11'11" x 9'8"	115 sq. ft	Yes
15	Primary Bath	9'5" x 12'1"	89 sq. ft	Yes
16	Hall	6'2" x 13'5"	83 sq. ft	Yes
17	Hall	3'0" x 7'8"	23 sq. ft	Yes

221 Alonzo Toney Drive, Triana, Madison, Madison County,
Alabama, United States, 35756

1 Floor 1 - Covered Patio



Dimensions: 15'1" x 22'11"
Area: 325 sq. ft
Counted as living area: No

Heated: No
Finished: Yes
Enclosed: No
Contiguous: Yes
Permitted: Yes
Wet space: No
Addition: No
Conversion: No

2 Floor 1 - Bedroom



Dimensions: 11'11" x 10'0"
Area: 119 sq. ft
Counted as living area: Yes

Heated: Yes
Finished: Yes
Enclosed: Yes
Contiguous: Yes
Permitted: Yes
Wet space: No
Addition: No
Conversion: No

221 Alonzo Toney Drive, Triana, Madison, Madison County,
Alabama, United States, 35756

3 Floor 1 - Foyer



Dimensions: 6'2" x 6'6"
Area: 40 sq. ft
Counted as living area: Yes

Heated: Yes
Finished: Yes
Enclosed: Yes
Contiguous: Yes
Permitted: Yes
Wet space: No
Addition: No
Conversion: No

4 Floor 1 - Laundry



Dimensions: 6'8" x 5'11"
Area: 39 sq. ft
Counted as living area: Yes

Heated: Yes
Finished: Yes
Enclosed: Yes
Contiguous: Yes
Permitted: Yes
Wet space: No
Addition: No
Conversion: No

5 Floor 1 - Dining Area



Dimensions: 12'3" x 10'5"
Area: 127 sq. ft
Counted as living area: Yes

Heated: Yes
Finished: Yes
Enclosed: Yes
Contiguous: Yes
Permitted: Yes
Wet space: No
Addition: No
Conversion: No

6 Floor 1 - WC



Dimensions: 2'8" x 5'10"
Area: 15 sq. ft
Counted as living area: Yes

Heated: Yes
Finished: Yes
Enclosed: Yes
Contiguous: Yes
Permitted: Yes
Wet space: Yes
Addition: No
Conversion: No

7 Floor 1 - Bath



Dimensions: 8'6" x 5'2"
Area: 44 sq. ft
Counted as living area: Yes

Heated: Yes
Finished: Yes
Enclosed: Yes
Contiguous: Yes
Permitted: Yes
Wet space: Yes
Addition: No
Conversion: No

8 Floor 1 - Primary Bedroom



Dimensions: 12'5" x 15'7"
Area: 187 sq. ft
Counted as living area: Yes

Heated: Yes
Finished: Yes
Enclosed: Yes
Contiguous: Yes
Permitted: Yes
Wet space: No
Addition: No
Conversion: No

221 Alonzo Toney Drive, Triana, Madison, Madison County,
Alabama, United States, 35756

9 Floor 1 - Garage



Dimensions: 19'1" x 19'7"
Area: 371 sq. ft
Counted as living area: No

Heated: No
Finished: No
Enclosed: Yes
Contiguous: Yes
Permitted: Yes
Wet space: No
Addition: No
Conversion: No

10 Floor 1 - Eat-in Kitchen



Dimensions: 19'9" x 16'3"
Area: 266 sq. ft
Counted as living area: Yes

Heated: Yes
Finished: Yes
Enclosed: Yes
Contiguous: Yes
Permitted: Yes
Wet space: No
Addition: No
Conversion: No

11 Floor 1 - W.I.C.



Dimensions: 6'11" x 5'11"
Area: 39 sq. ft
Counted as living area: Yes

Heated: Yes
Finished: Yes
Enclosed: Yes
Contiguous: Yes
Permitted: Yes
Wet space: No
Addition: No
Conversion: No

12 Floor 1 - Living Room



Dimensions: 15'1" x 20'1"
Area: 271 sq. ft
Counted as living area: Yes

Heated: Yes
Finished: Yes
Enclosed: Yes
Contiguous: Yes
Permitted: Yes
Wet space: No
Addition: No
Conversion: No

13 Floor 1 - Bedroom



Dimensions: 11'11" x 12'2"
Area: 131 sq. ft
Counted as living area: Yes

Heated: Yes
Finished: Yes
Enclosed: Yes
Contiguous: Yes
Permitted: Yes
Wet space: No
Addition: No
Conversion: No

14 Floor 1 - Bedroom



Dimensions: 11'11" x 9'8"
Area: 115 sq. ft
Counted as living area: Yes

Heated: Yes
Finished: Yes
Enclosed: Yes
Contiguous: Yes
Permitted: Yes
Wet space: No
Addition: No
Conversion: No

15 Floor 1 - Primary Bath



Dimensions: 9'5" x 12'1"
Area: 89 sq. ft
Counted as living area: Yes

Heated: Yes
Finished: Yes
Enclosed: Yes
Contiguous: Yes
Permitted: Yes
Wet space: Yes
Addition: No
Conversion: No

16 Floor 1 - Hall



Dimensions: 6'2" x 13'5"
Area: 83 sq. ft
Counted as living area: Yes

Heated: Yes
Finished: Yes
Enclosed: Yes
Contiguous: Yes
Permitted: Yes
Wet space: No
Addition: No
Conversion: No

17 Floor 1 - Hall



Dimensions: 3'0" x 7'8"
Area: 23 sq. ft
Counted as living area: Yes

Heated: Yes
Finished: Yes
Enclosed: Yes
Contiguous: Yes
Permitted: Yes
Wet space: No
Addition: No
Conversion: No