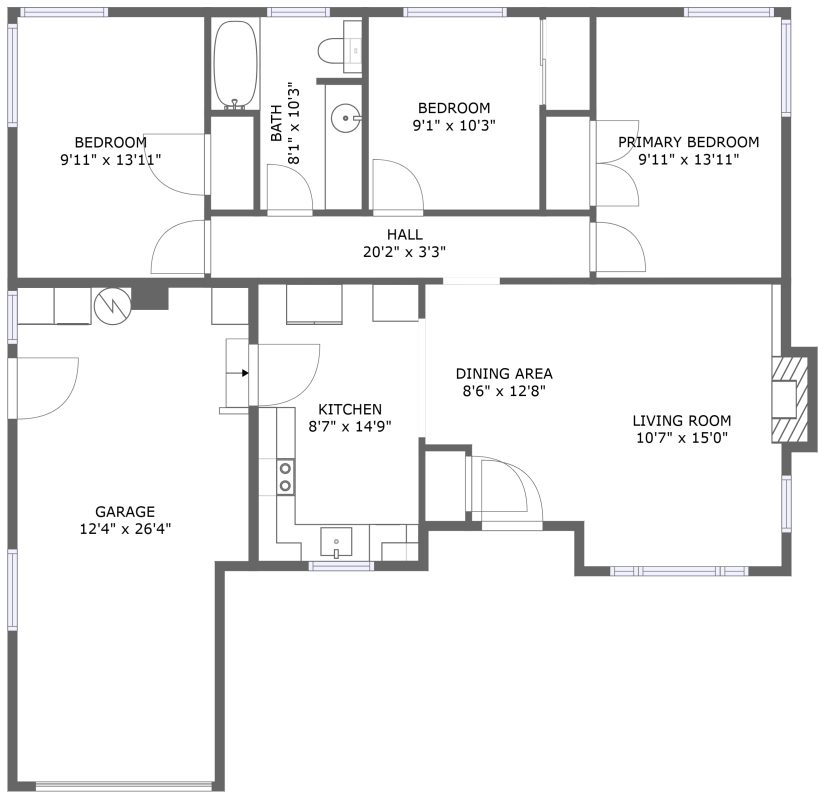



Home report


1637 Camino Drive, Forest Grove, Washington County, Oregon,  
United States, 97116





FLOOR 1


Property summary


 **1** Garages


 **3** Bedrooms

 **1** Bathrooms

 **0** Half baths

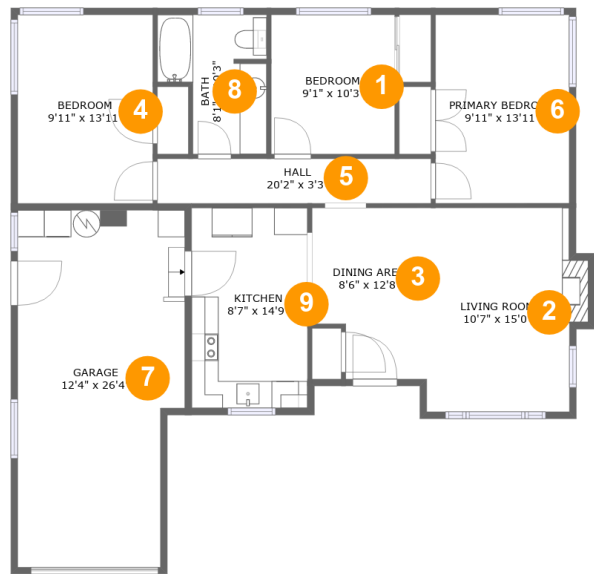
 **1** Floors

 **1,046** Gross living area sqft

 **1,384** Total sqft

Home report

1637 Camino Drive, Forest Grove, Washington County, Oregon,  
United States, 97116



Room dimensions

Floor 1 Total sqft: 1384    Living area: 1046

#		Max Dimensions	sqft	Included
1	Bedroom	9'1" x 10'3"	94 sq. ft	Yes
2	Living Room	10'7" x 15'0"	165 sq. ft	Yes
3	Dining Area	8'6" x 12'8"	97 sq. ft	Yes
4	Bedroom	9'11" x 13'11"	139 sq. ft	Yes
5	Hall	20'2" x 3'3"	67 sq. ft	Yes
6	Primary Bedroom	9'11" x 13'11"	137 sq. ft	Yes
7	Garage	12'4" x 26'4"	304 sq. ft	No
8	Bath	8'1" x 10'3"	68 sq. ft	Yes
9	Kitchen	8'7" x 14'9"	126 sq. ft	Yes

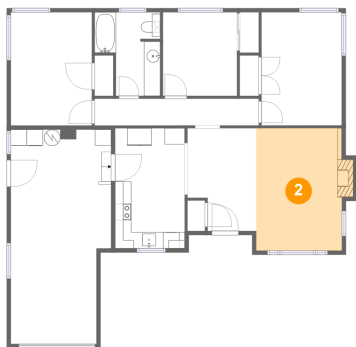
1 Floor 1 - Bedroom



Max Dimensions: 9'1" x 10'3"  
Calculated Area: 94 sq. ft  
Included: Yes

Heated: Yes  
Finished: Yes  
Enclosed: Yes  
Contiguous: Yes  
Permitted: Yes  
Wet space: No  
Addition: No  
Conversion: No

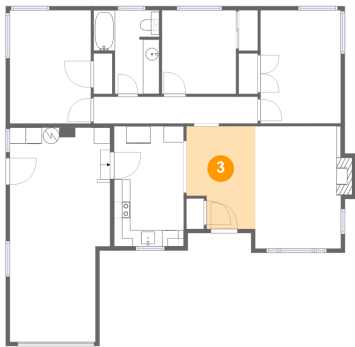
2 Floor 1 - Living Room



Max Dimensions: 10'7" x 15'0"  
Calculated Area: 165 sq. ft  
Included: Yes

Heated: Yes  
Finished: Yes  
Enclosed: Yes  
Contiguous: Yes  
Permitted: Yes  
Wet space: No  
Addition: No  
Conversion: No

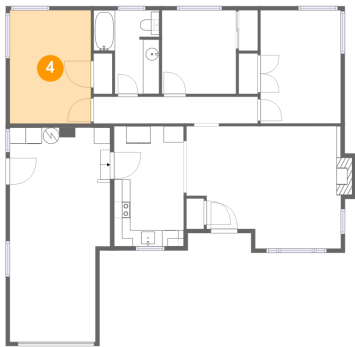
3 Floor 1 - Dining Area



Max Dimensions: 8'6" x 12'8"  
Calculated Area: 97 sq. ft  
Included: Yes

Heated: Yes  
Finished: Yes  
Enclosed: Yes  
Contiguous: Yes  
Permitted: Yes  
Wet space: No  
Addition: No  
Conversion: No

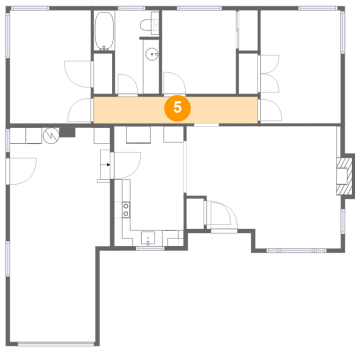
4 Floor 1 - Bedroom



Max Dimensions: 9'11" x 13'11"  
Calculated Area: 139 sq. ft  
Included: Yes

Heated: Yes  
Finished: Yes  
Enclosed: Yes  
Contiguous: Yes  
Permitted: Yes  
Wet space: No  
Addition: No  
Conversion: No

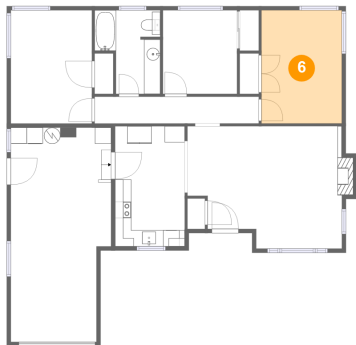
5 Floor 1 - Hall



Max Dimensions: 20'2" x 3'3"  
Calculated Area: 67 sq. ft  
Included: Yes

Heated: Yes  
Finished: Yes  
Enclosed: Yes  
Contiguous: Yes  
Permitted: Yes  
Wet space: No  
Addition: No  
Conversion: No

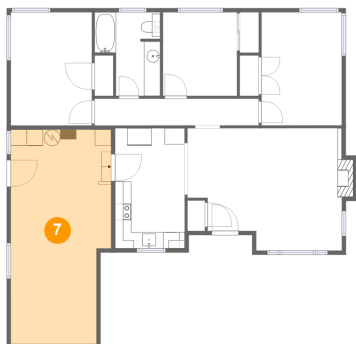
6 Floor 1 - Primary Bedroom



Max Dimensions: 9'11" x 13'11"  
Calculated Area: 137 sq. ft  
Included: Yes

Heated: Yes  
Finished: Yes  
Enclosed: Yes  
Contiguous: Yes  
Permitted: Yes  
Wet space: No  
Addition: No  
Conversion: No

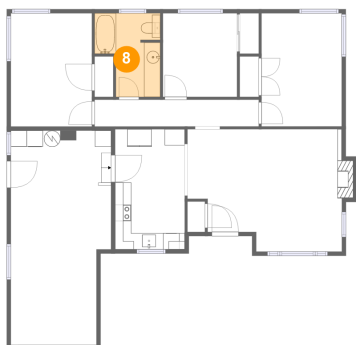
7 Floor 1 - Garage



Max Dimensions: 12'4" x 26'4"  
Calculated Area: 304 sq. ft  
Included: No

Heated: No  
Finished: No  
Enclosed: Yes  
Contiguous: Yes  
Permitted: Yes  
Wet space: No  
Addition: No  
Conversion: No

8 Floor 1 - Bath



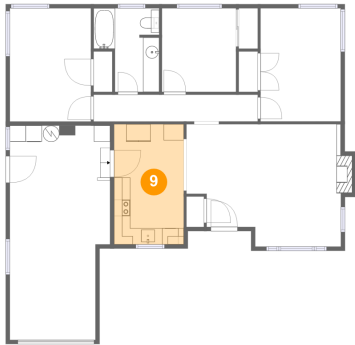
Max Dimensions: 8'1" x 10'3"  
Calculated Area: 68 sq. ft  
Included: Yes

Heated: Yes  
Finished: Yes  
Enclosed: Yes  
Contiguous: Yes  
Permitted: Yes  
Wet space: Yes  
Addition: No  
Conversion: No

Home report

1637 Camino Drive, Forest Grove, Washington County, Oregon,  
United States, 97116

9 Floor 1 - Kitchen



Max Dimensions: 8'7" x 14'9"  
Calculated Area: 126 sq. ft  
Included: Yes

Heated: Yes  
Finished: Yes  
Enclosed: Yes  
Contiguous: Yes  
Permitted: Yes  
Wet space: No  
Addition: No  
Conversion: No