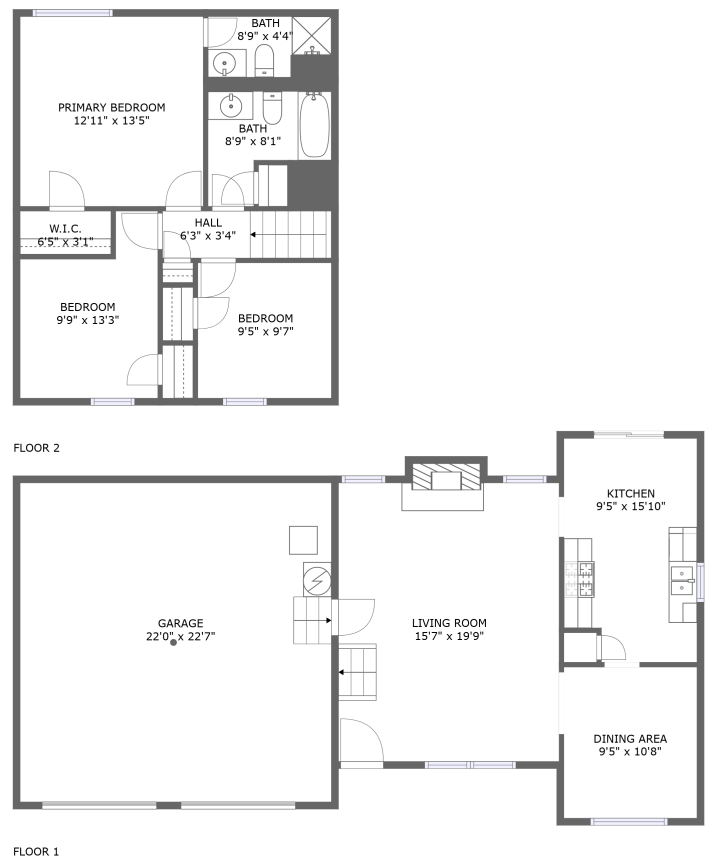


Home report

340 Windsor Walk Southeast, Conyers, Rockdale County,  
Georgia, United States, 30094




Total Area: 1166 sq. ft


Floor 1: 570 sq. ft, Floor 2: 596 sq. ft

Excluded: Garage 497 sq. ft, Fireplace 8 sq. ft, Walls: 133 sq. ft

Property summary

 **2**  
Floors

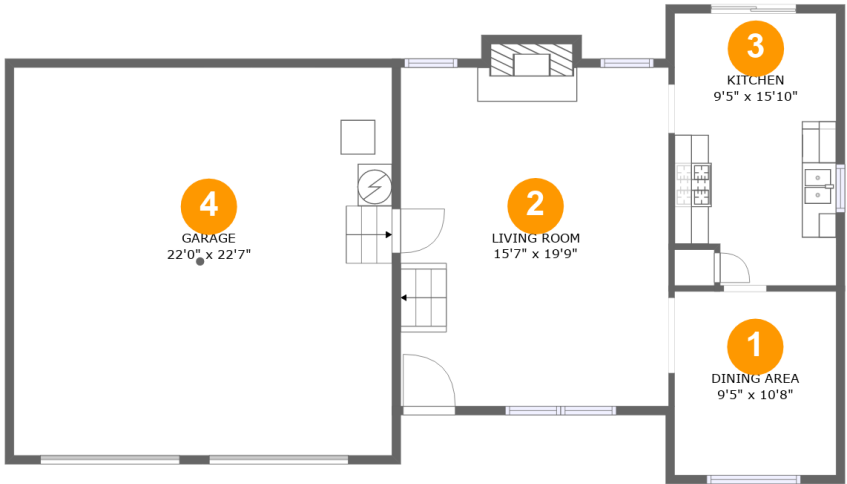
 **3**  
Bedrooms

 **2**  
Bathrooms

 **1**  
Garages

Home report

340 Windsor Walk Southeast, Conyers, Rockdale County,  
Georgia, United States, 30094

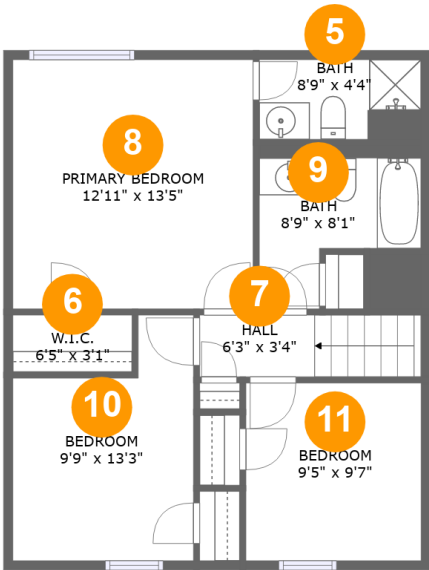


Room dimensions

Floor 1 Total:570sqft   Excluded: 505sqft

| # |             | Max Dimensions | sqft       | Included |
|---|-------------|----------------|------------|----------|
| 1 | Dining Area | 9'5" x 10'8"   | 101 sq. ft | Yes      |
| 2 | Living Room | 15'7" x 19'9"  | 314 sq. ft | Yes      |
| 3 | Kitchen     | 9'5" x 15'10"  | 143 sq. ft | Yes      |
| 4 | Garage      | 22'0" x 22'7"  | 497 sq. ft | No       |

340 Windsor Walk Southeast, Conyers, Rockdale County, Georgia, United States, 30094



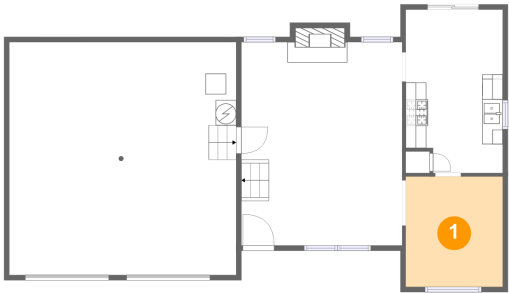
Room dimensions

Floor 2 Total:596sqft   Excluded: 0sqft

| #  |                 | Max Dimensions | sqft       | Included |
|----|-----------------|----------------|------------|----------|
| 5  | Bath            | 8'9" x 4'4"    | 37 sq. ft  | Yes      |
| 6  | W.I.C.          | 6'5" x 3'1"    | 20 sq. ft  | Yes      |
| 7  | Hall            | 6'3" x 3'4"    | 40 sq. ft  | Yes      |
| 8  | Primary Bedroom | 12'11" x 13'5" | 174 sq. ft | Yes      |
| 9  | Bath            | 8'9" x 8'1"    | 59 sq. ft  | Yes      |
| 10 | Bedroom         | 9'9" x 13'3"   | 106 sq. ft | Yes      |
| 11 | Bedroom         | 9'5" x 9'7"    | 91 sq. ft  | Yes      |

340 Windsor Walk Southeast, Conyers, Rockdale County,  
Georgia, United States, 30094

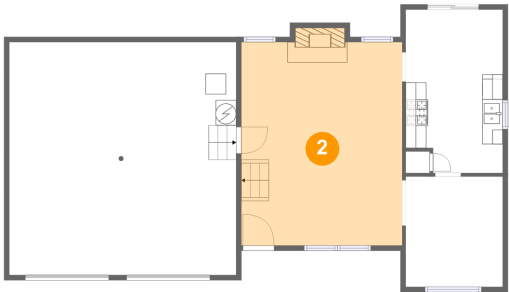
1 Floor 1 - Dining Area



Max Dimensions: 9'5" x 10'8"  
Calculated Area: 101 sq. ft  
Included: Yes

Heated: Yes  
Finished: Yes  
Enclosed: Yes  
Contiguous: Yes  
Permitted: Yes  
Wet space: No  
Addition: No  
Conversion: No

2 Floor 1 - Living Room

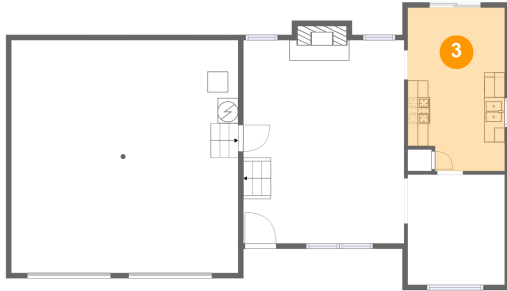


Max Dimensions: 15'7" x 19'9"  
Calculated Area: 314 sq. ft  
Included: Yes

Heated: Yes  
Finished: Yes  
Enclosed: Yes  
Contiguous: Yes  
Permitted: Yes  
Wet space: No  
Addition: No  
Conversion: No

340 Windsor Walk Southeast, Conyers, Rockdale County,  
Georgia, United States, 30094

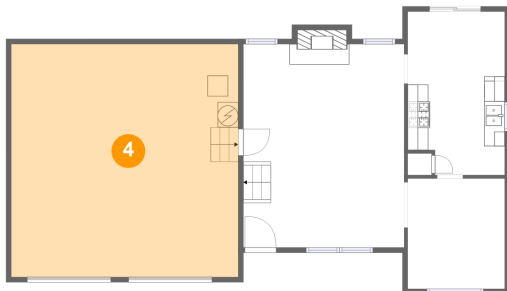
### 3 Floor 1 - Kitchen



Max Dimensions: 9'5" x 15'10"  
Calculated Area: 143 sq. ft  
Included: Yes

Heated: Yes  
Finished: Yes  
Enclosed: Yes  
Contiguous: Yes  
Permitted: Yes  
Wet space: No  
Addition: No  
Conversion: No

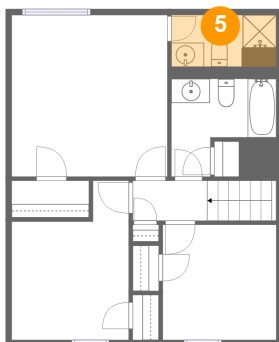
### 4 Floor 1 - Garage



Max Dimensions: 22'0" x 22'7"  
Calculated Area: 497 sq. ft  
Included: No

Heated: No  
Finished: No  
Enclosed: Yes  
Contiguous: Yes  
Permitted: Yes  
Wet space: No  
Addition: No  
Conversion: No

### 5 Floor 2 - Bath

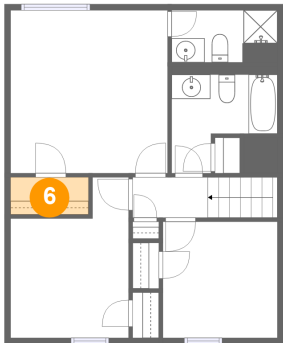


Max Dimensions: 8'9" x 4'4"  
Calculated Area: 37 sq. ft  
Included: Yes

Heated: Yes  
Finished: Yes  
Enclosed: Yes  
Contiguous: Yes  
Permitted: Yes  
Wet space: Yes  
Addition: No  
Conversion: No

340 Windsor Walk Southeast, Conyers, Rockdale County,  
Georgia, United States, 30094

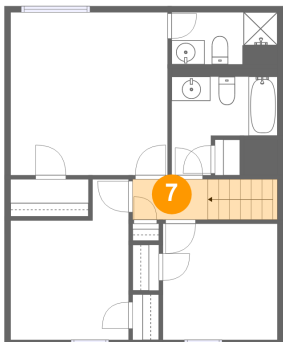
6 Floor 2 - W.I.C.



Max Dimensions: 6'5" x 3'1"  
Calculated Area: 20 sq. ft  
Included: Yes

Heated: Yes  
Finished: Yes  
Enclosed: Yes  
Contiguous: Yes  
Permitted: Yes  
Wet space: No  
Addition: No  
Conversion: No

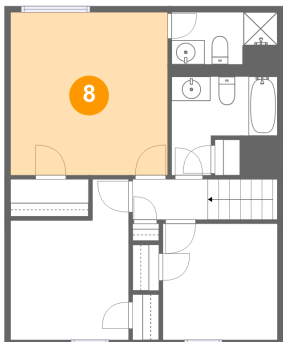
7 Floor 2 - Hall



Max Dimensions: 6'3" x 3'4"  
Calculated Area: 40 sq. ft  
Included: Yes

Heated: Yes  
Finished: Yes  
Enclosed: Yes  
Contiguous: Yes  
Permitted: Yes  
Wet space: No  
Addition: No  
Conversion: No

8 Floor 2 - Primary Bedroom

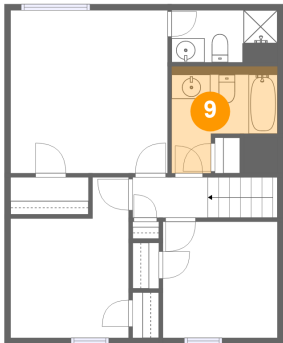


Max Dimensions: 12'11" x 13'5"  
Calculated Area: 174 sq. ft  
Included: Yes

Heated: Yes  
Finished: Yes  
Enclosed: Yes  
Contiguous: Yes  
Permitted: Yes  
Wet space: No  
Addition: No  
Conversion: No

340 Windsor Walk Southeast, Conyers, Rockdale County,  
Georgia, United States, 30094

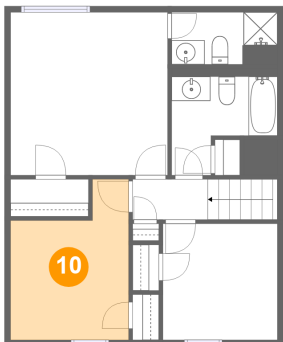
9 Floor 2 - Bath



Max Dimensions: 8'9" x 8'1"  
Calculated Area: 59 sq. ft  
Included: Yes

Heated: Yes  
Finished: Yes  
Enclosed: Yes  
Contiguous: Yes  
Permitted: Yes  
Wet space: Yes  
Addition: No  
Conversion: No

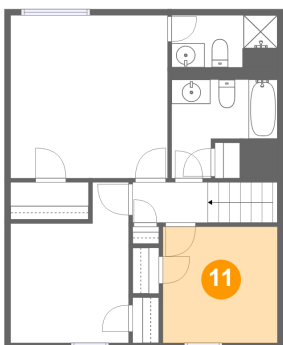
10 Floor 2 - Bedroom



Max Dimensions: 9'9" x 13'3"  
Calculated Area: 106 sq. ft  
Included: Yes

Heated: Yes  
Finished: Yes  
Enclosed: Yes  
Contiguous: Yes  
Permitted: Yes  
Wet space: No  
Addition: No  
Conversion: No

11 Floor 2 - Bedroom



Max Dimensions: 9'5" x 9'7"  
Calculated Area: 91 sq. ft  
Included: Yes

Heated: Yes  
Finished: Yes  
Enclosed: Yes  
Contiguous: Yes  
Permitted: Yes  
Wet space: No  
Addition: No  
Conversion: No