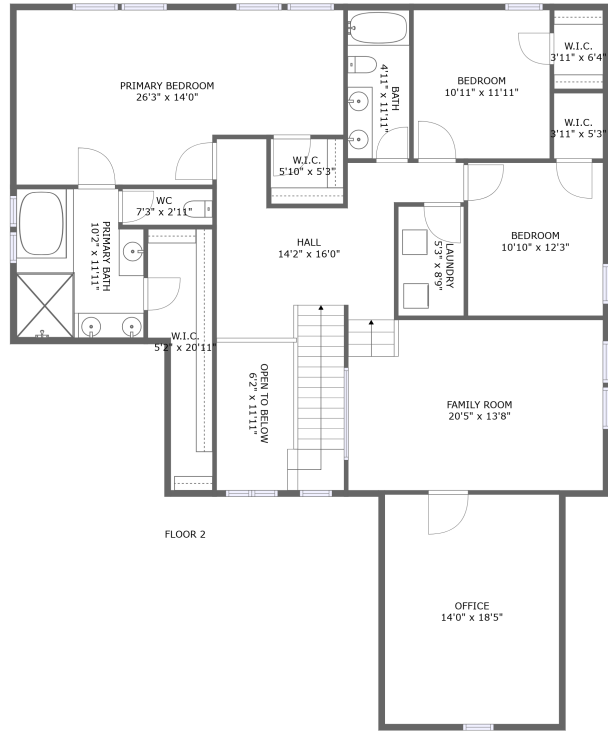
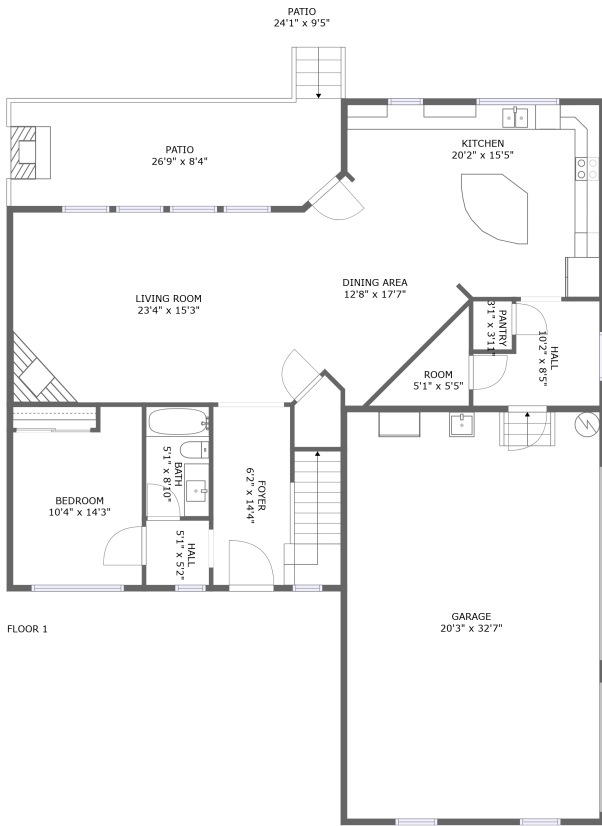


# 2216 Carouth Ct, Nolensville, Tennessee, United States



## Property Summary



2 floors



4 bedrooms



3 bathrooms



4,549 total sqft

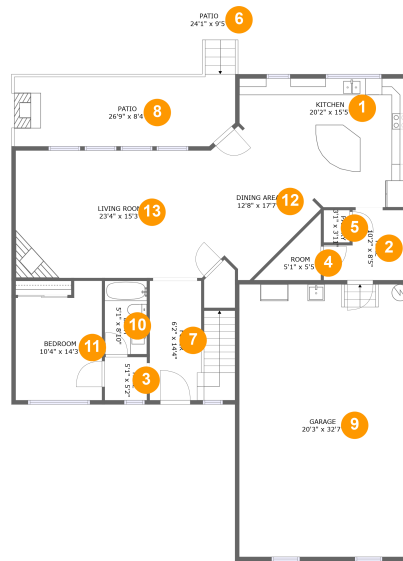


1 garages



3,324 Gross Living Area sqft

# 2216 Carouth Ct, Nolensville, Tennessee, United States



## Room Dimensions

**Floor 1****Total sqft: 2523****Living area: 1372**

#	Room name	Dimensions	Area (sqft)	Counted as Living Area
1	Kitchen	20'2" x 15'5"	261 sq. ft	Yes
2	Hall	10'2" x 8'5"	70 sq. ft	Yes
3	Hall	5'1" x 5'2"	26 sq. ft	Yes
4	Room	5'1" x 5'5"	32 sq. ft	Yes
5	Pantry	3'1" x 3'11"	12 sq. ft	Yes
6	Patio	24'1" x 9'5"	211 sq. ft	Yes
7	Foyer	6'2" x 14'4"	131 sq. ft	Yes
8	Patio	26'9" x 8'4"	245 sq. ft	No
9	Garage	20'3" x 32'7"	660 sq. ft	No
10	Bath	5'1" x 8'10"	44 sq. ft	Yes
11	Bedroom	10'4" x 14'3"	133 sq. ft	Yes

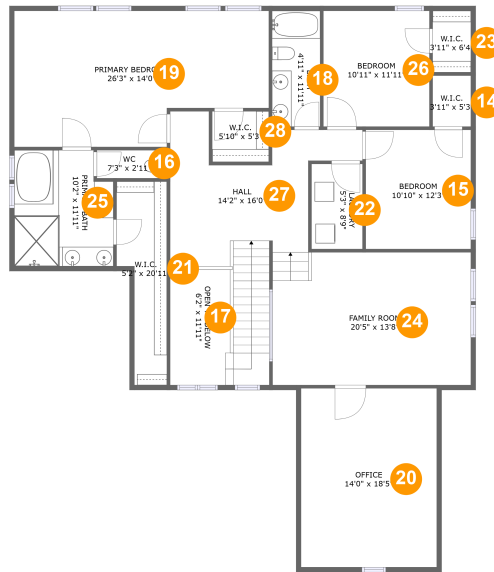
Scan captured on Mon, 29 Apr 2024 17:43:11 GMT

Information is calculated by CubiCasa technology; deemed highly reliable but not guaranteed.

**2216 Carouth Ct, Nolensville, Tennessee, United States**

#	Room name	Dimensions	Area (sqft)	Counted as Living Area
12	Dining Area	12'8" x 17'7"	150 sq. ft	Yes
13	Living Room	23'4" x 15'3"	356 sq. ft	Yes

# 2216 Carouth Ct, Nolensville, Tennessee, United States



## Room Dimensions

Floor 2

Total sqft: 2026

Living area: 1952

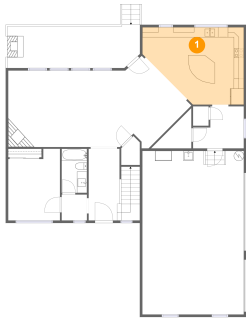
#	Room name	Dimensions	Area (sqft)	Counted as Living Area
14	W.i.c.	3'11" x 5'3"	21 sq. ft	Yes
15	Bedroom	10'10" x 12'3"	133 sq. ft	Yes
16	Wc	7'3" x 2'11"	21 sq. ft	Yes
17	Open To Below	6'2" x 11'11"	72 sq. ft	No
18	Bath	4'11" x 11'11"	59 sq. ft	Yes
19	Primary Bedroom	26'3" x 14'0"	325 sq. ft	Yes
20	Office	14'0" x 18'5"	257 sq. ft	Yes
21	W.i.c.	5'2" x 20'11"	86 sq. ft	Yes
22	Laundry	5'3" x 8'9"	46 sq. ft	Yes
23	W.i.c.	3'11" x 6'4"	25 sq. ft	Yes
24	Family Room	20'5" x 13'8"	269 sq. ft	Yes

**2216 Carouth Ct, Nolensville, Tennessee, United States**

#	Room name	Dimensions	Area (sqft)	Counted as Living Area
25	Primary Bath	10'2" x 11'11"	115 sq. ft	Yes
26	Bedroom	10'11" x 11'11"	130 sq. ft	Yes
27	Hall	14'2" x 16'0"	258 sq. ft	Yes
28	W.i.c.	5'10" x 5'3"	30 sq. ft	Yes

# 2216 Carouth Ct, Nolensville, Tennessee, United States

## 1 Floor 1 - Kitchen



**Dimensions:** 20'2" x 15'5"  
**Area:** 261 sq. ft  
**Counted as Living Area:**  
Yes

**Heated:** Yes  
**Finished:** Yes  
**Enclosed:** Yes  
**Contiguous:**  
Yes  
**Permitted:** Yes  
**Wet Space:** No  
**Addition:** No  
**Conversion:** No

## 2 Floor 1 - Hall



**Dimensions:** 10'2" x 8'5"  
**Area:** 70 sq. ft  
**Counted as Living Area:**  
Yes

**Heated:** Yes  
**Finished:** Yes  
**Enclosed:** Yes  
**Contiguous:**  
Yes  
**Permitted:** Yes  
**Wet Space:** No  
**Addition:** No  
**Conversion:** No

# 2216 Carouth Ct, Nolensville, Tennessee, United States

## 3 Floor 1 - Hall



Dimensions: 5'1" x 5'2"  
Area: 26 sq. ft  
Counted as Living Area:  
Yes

Heated: Yes  
Finished: Yes  
Enclosed: Yes  
Contiguous:  
Yes  
Permitted: Yes  
Wet Space: No  
Addition: No  
Conversion: No

## 4 Floor 1 - Room



Dimensions: 5'1" x 5'5"  
Area: 32 sq. ft  
Counted as Living Area:  
Yes

Heated: Yes  
Finished: Yes  
Enclosed: Yes  
Contiguous:  
Yes  
Permitted: Yes  
Wet Space: No  
Addition: No  
Conversion: No

## 5 Floor 1 - Pantry

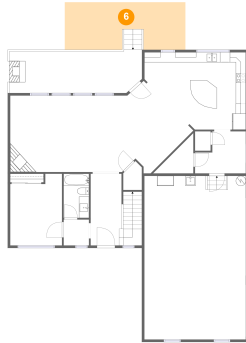


Dimensions: 3'1" x 3'11"  
Area: 12 sq. ft  
Counted as Living Area:  
Yes

Heated: Yes  
Finished: Yes  
Enclosed: Yes  
Contiguous:  
Yes  
Permitted: Yes  
Wet Space: No  
Addition: No  
Conversion: No

# 2216 Carouth Ct, Nolensville, Tennessee, United States

## 6 Floor 1 - Patio



Dimensions: 24'1" x 9'5"  
Area: 211 sq. ft  
Counted as Living Area:  
Yes

Heated: No  
Finished: Yes  
Enclosed: No  
Contiguous:  
Yes  
Permitted: Yes  
Wet Space: No  
Addition: No  
Conversion: No

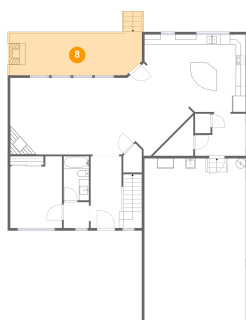
## 7 Floor 1 - Foyer



Dimensions: 6'2" x 14'4"  
Area: 131 sq. ft  
Counted as Living Area:  
Yes

Heated: Yes  
Finished: Yes  
Enclosed: Yes  
Contiguous:  
Yes  
Permitted: Yes  
Wet Space: No  
Addition: No  
Conversion: No

## 8 Floor 1 - Patio



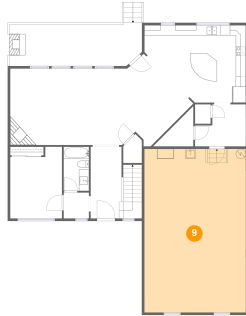
Dimensions: 26'9" x 8'4"  
Area: 245 sq. ft  
Counted as Living Area: No

Heated: No  
Finished: Yes  
Enclosed: No  
Contiguous: Yes  
Permitted: Yes  
Wet Space: No  
Addition: No  
Conversion: No



# 2216 Carouth Ct, Nolensville, Tennessee, United States

## 9 Floor 1 - Garage



Dimensions: 20'3" x 32'7"  
Area: 660 sq. ft  
Counted as Living Area: No

Heated: No  
Finished: No  
Enclosed: Yes  
Contiguous: Yes  
Permitted: Yes  
Wet Space: No  
Addition: No  
Conversion: No

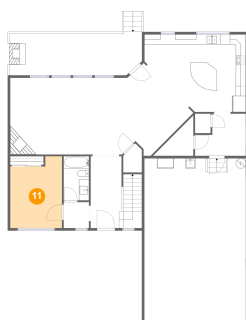
## 10 Floor 1 - Bath



Dimensions: 5'1" x 8'10"  
Area: 44 sq. ft  
Counted as Living Area: Yes

Heated: Yes  
Finished: Yes  
Enclosed: Yes  
Contiguous: Yes  
Permitted: Yes  
Wet Space: Yes  
Addition: No  
Conversion: No

## 11 Floor 1 - Bedroom

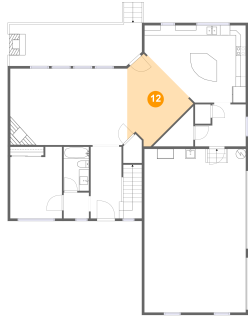


Dimensions: 10'4" x 14'3"  
Area: 133 sq. ft  
Counted as Living Area: Yes

Heated: Yes  
Finished: Yes  
Enclosed: Yes  
Contiguous: Yes  
Permitted: Yes  
Wet Space: No  
Addition: No  
Conversion: No

# 2216 Carouth Ct, Nolensville, Tennessee, United States

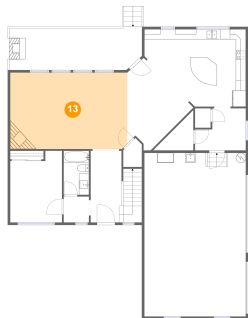
## 12 Floor 1 - Dining Area



Dimensions: 12'8" x 17'7"  
Area: 150 sq. ft  
Counted as Living Area:  
Yes

Heated: Yes  
Finished: Yes  
Enclosed: Yes  
Contiguous:  
Yes  
Permitted: Yes  
Wet Space: No  
Addition: No  
Conversion: No

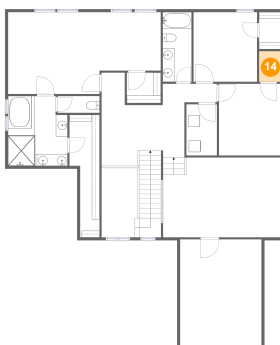
## 13 Floor 1 - Living Room



Dimensions: 23'4" x 15'3"  
Area: 356 sq. ft  
Counted as Living Area:  
Yes

Heated: Yes  
Finished: Yes  
Enclosed: Yes  
Contiguous:  
Yes  
Permitted: Yes  
Wet Space: No  
Addition: No  
Conversion: No

## 14 Floor 2 - W.i.c.

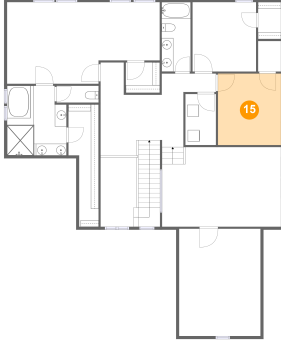


Dimensions: 3'11" x 5'3"  
Area: 21 sq. ft  
Counted as Living Area:  
Yes

Heated: Yes  
Finished: Yes  
Enclosed: Yes  
Contiguous:  
Yes  
Permitted: Yes  
Wet Space: No  
Addition: No  
Conversion: No

# 2216 Carouth Ct, Nolensville, Tennessee, United States

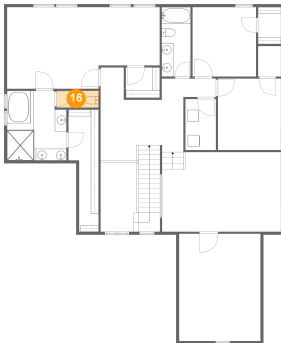
## 15 Floor 2 - Bedroom



**Dimensions:** 10'10" x 12'3"  
**Area:** 133 sq. ft  
**Counted as Living Area:**  
Yes

**Heated:** Yes  
**Finished:** Yes  
**Enclosed:** Yes  
**Contiguous:**  
Yes  
**Permitted:** Yes  
**Wet Space:** No  
**Addition:** No  
**Conversion:** No

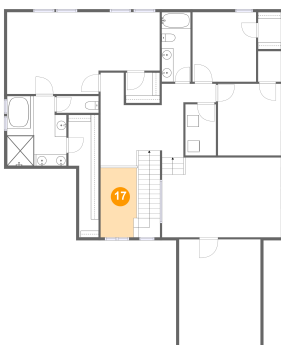
## 16 Floor 2 - Wc



**Dimensions:** 7'3" x 2'11"  
**Area:** 21 sq. ft  
**Counted as Living Area:**  
Yes

**Heated:** Yes  
**Finished:** Yes  
**Enclosed:** Yes  
**Contiguous:**  
Yes  
**Permitted:** Yes  
**Wet Space:** Yes  
**Addition:** No  
**Conversion:** No

## 17 Floor 2 - Open To Below

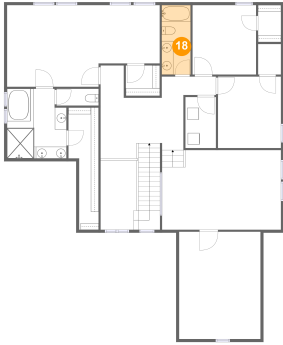


**Dimensions:** 6'2" x 11'11"  
**Area:** 72 sq. ft  
**Counted as Living Area:** No

**Heated:** No  
**Finished:** No  
**Enclosed:** No  
**Contiguous:** Yes  
**Permitted:** No  
**Wet Space:** No  
**Addition:** No  
**Conversion:** No

# 2216 Carouth Ct, Nolensville, Tennessee, United States

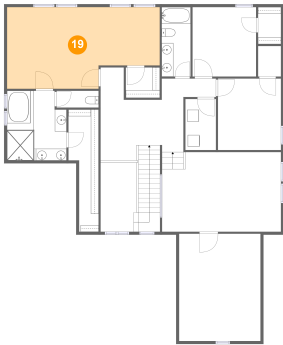
## 18 Floor 2 - Bath



Dimensions: 4'11" x 11'11"  
Area: 59 sq. ft  
Counted as Living Area:  
Yes

Heated: Yes  
Finished: Yes  
Enclosed: Yes  
Contiguous:  
Yes  
Permitted: Yes  
Wet Space: Yes  
Addition: No  
Conversion: No

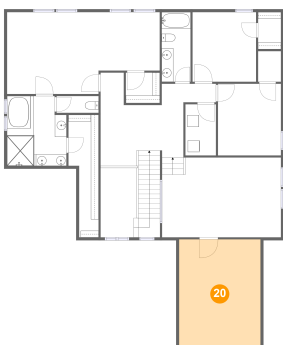
## 19 Floor 2 - Primary Bedroom



Dimensions: 26'3" x 14'0"  
Area: 325 sq. ft  
Counted as Living Area:  
Yes

Heated: Yes  
Finished: Yes  
Enclosed: Yes  
Contiguous:  
Yes  
Permitted: Yes  
Wet Space: No  
Addition: No  
Conversion: No

## 20 Floor 2 - Office

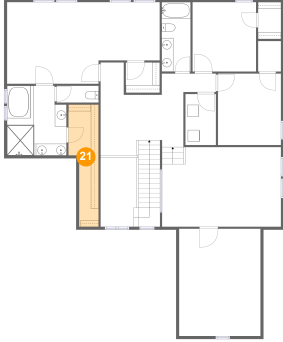


Dimensions: 14'0" x 18'5"  
Area: 257 sq. ft  
Counted as Living Area:  
Yes

Heated: Yes  
Finished: Yes  
Enclosed: Yes  
Contiguous:  
Yes  
Permitted: Yes  
Wet Space: No  
Addition: No  
Conversion: No

# 2216 Carouth Ct, Nolensville, Tennessee, United States

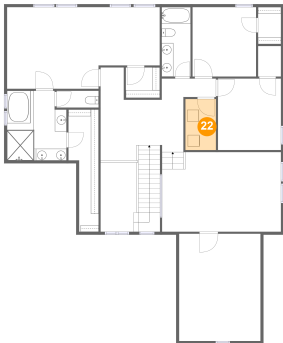
## 21 Floor 2 - W.i.c.



Dimensions: 5'2" x 20'11"  
Area: 86 sq. ft  
Counted as Living Area:  
Yes

Heated: Yes  
Finished: Yes  
Enclosed: Yes  
Contiguous:  
Yes  
Permitted: Yes  
Wet Space: No  
Addition: No  
Conversion: No

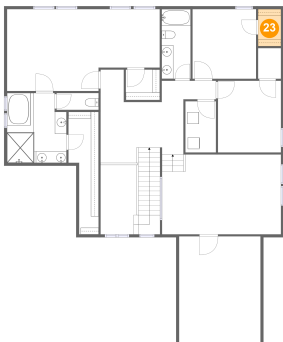
## 22 Floor 2 - Laundry



Dimensions: 5'3" x 8'9"  
Area: 46 sq. ft  
Counted as Living Area:  
Yes

Heated: Yes  
Finished: Yes  
Enclosed: Yes  
Contiguous:  
Yes  
Permitted: Yes  
Wet Space: No  
Addition: No  
Conversion: No

## 23 Floor 2 - W.i.c.

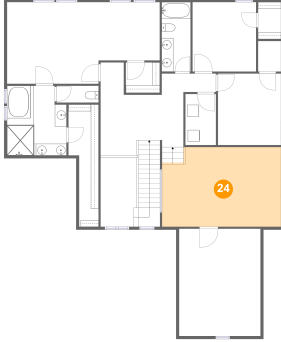


Dimensions: 3'11" x 6'4"  
Area: 25 sq. ft  
Counted as Living Area:  
Yes

Heated: Yes  
Finished: Yes  
Enclosed: Yes  
Contiguous:  
Yes  
Permitted: Yes  
Wet Space: No  
Addition: No  
Conversion: No

# 2216 Carouth Ct, Nolensville, Tennessee, United States

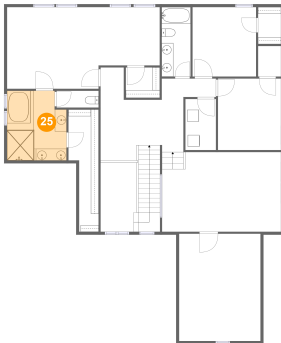
## 24 Floor 2 - Family Room



**Dimensions:** 20'5" x 13'8"  
**Area:** 269 sq. ft  
**Counted as Living Area:**  
Yes

**Heated:** Yes  
**Finished:** Yes  
**Enclosed:** Yes  
**Contiguous:**  
Yes  
**Permitted:** Yes  
**Wet Space:** No  
**Addition:** No  
**Conversion:** No

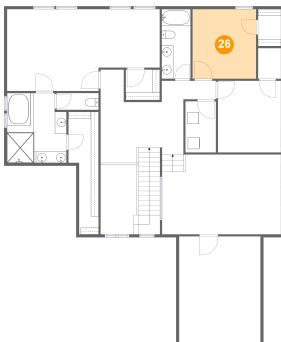
## 25 Floor 2 - Primary Bath



**Dimensions:** 10'2" x 11'11"  
**Area:** 115 sq. ft  
**Counted as Living Area:**  
Yes

**Heated:** Yes  
**Finished:** Yes  
**Enclosed:** Yes  
**Contiguous:**  
Yes  
**Permitted:** Yes  
**Wet Space:** Yes  
**Addition:** No  
**Conversion:** No

## 26 Floor 2 - Bedroom

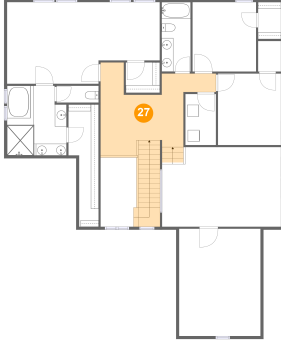


**Dimensions:** 10'11" x 11'11"  
**Area:** 130 sq. ft  
**Counted as Living Area:**  
Yes

**Heated:** Yes  
**Finished:** Yes  
**Enclosed:** Yes  
**Contiguous:**  
Yes  
**Permitted:** Yes  
**Wet Space:** No  
**Addition:** No  
**Conversion:** No

# 2216 Carouth Ct, Nolensville, Tennessee, United States

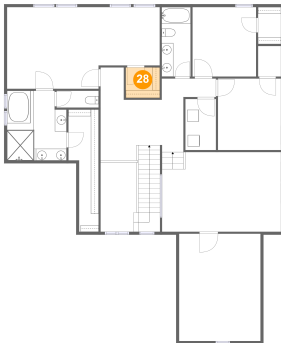
## 27 Floor 2 - Hall



Dimensions: 14'2" x 16'0"  
Area: 258 sq. ft  
Counted as Living Area:  
Yes

Heated: Yes  
Finished: Yes  
Enclosed: Yes  
Contiguous:  
Yes  
Permitted: Yes  
Wet Space: No  
Addition: No  
Conversion: No

## 28 Floor 2 - W.i.c.



Dimensions: 5'10" x 5'3"  
Area: 30 sq. ft  
Counted as Living Area:  
Yes

Heated: Yes  
Finished: Yes  
Enclosed: Yes  
Contiguous:  
Yes  
Permitted: Yes  
Wet Space: No  
Addition: No  
Conversion: No