

## Home report

2981 Geneva Lane, Lake in the Hills, McHenry County, Illinois,  
United States, 60156



**Total Area: 2489 sq. ft**

Below Ground: 157 sq. ft, Floor 2: 1215 sq. ft, Floor 3: 1117 sq. ft

Excluded: Basement 720 sq. ft, Undefined 28 sq. ft, Utility 28 sq. ft, Garage 384 sq. ft,  
Covered patio 308 sq. ft, Porch 142 sq. ft, Fireplace 16 sq. ft, Open to below 42 sq. ft,  
Walls: 273 sq. ft

## Property summary



**3**  
Floors



**4**  
Bedrooms



**3**  
Bathrooms

Home report

**2981 Geneva Lane, Lake in the Hills, McHenry County, Illinois,  
United States, 60156**

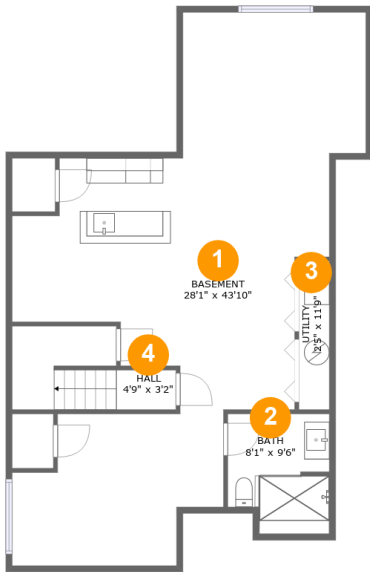


**1**  
Half baths



**1**  
Garages

2981 Geneva Lane, Lake in the Hills, McHenry County, Illinois,  
United States, 60156

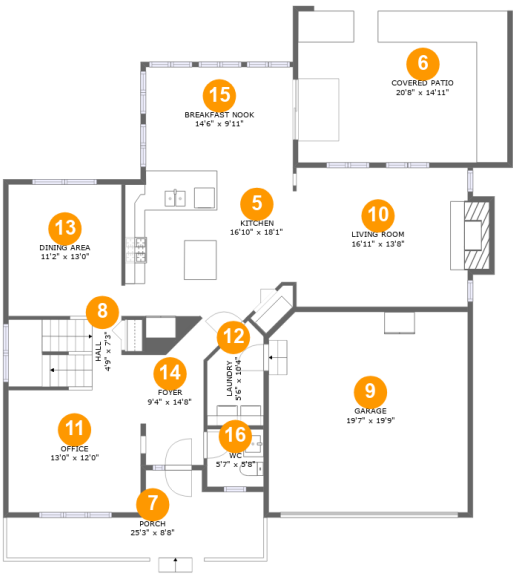


Room dimensions

Floor 1 Below ground Total:157sqft    Excluded: 776sqft

#		Max Dimensions	sqft	Included
1	Basement	28'1" x 43'10"	710 sq. ft	No
2	Bath	8'1" x 9'6"	71 sq. ft	Yes
3	Utility	2'5" x 11'9"	28 sq. ft	No
4	Hall	4'9" x 3'2"	68 sq. ft	Yes

2981 Geneva Lane, Lake in the Hills, McHenry County, Illinois,  
United States, 60156



Room dimensions

Floor 2 Total:1215sqft    Excluded: 850sqft

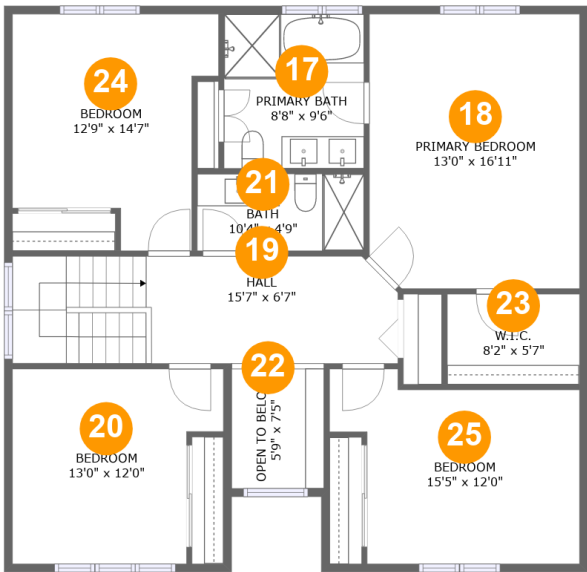
#		Max Dimensions	sqft	Included
5	Kitchen	16'10" x 18'1"	246 sq. ft	Yes
6	Covered Patio	20'8" x 14'11"	308 sq. ft	No
7	Porch	25'3" x 8'8"	142 sq. ft	No
8	Hall	4'9" x 7'3"	84 sq. ft	Yes
9	Garage	19'7" x 19'9"	384 sq. ft	No
10	Living Room	16'11" x 13'8"	246 sq. ft	Yes
11	Office	13'0" x 12'0"	157 sq. ft	Yes
12	Laundry	5'6" x 10'4"	48 sq. ft	Yes
13	Dining Area	11'2" x 13'0"	145 sq. ft	Yes
14	Foyer	9'4" x 14'8"	83 sq. ft	Yes
15	Breakfast Nook	14'6" x 9'11"	144 sq. ft	Yes

Home report

**2981 Geneva Lane, Lake in the Hills, McHenry County, Illinois,  
United States, 60156**

#		Max Dimensions	sqft	Included
16	WC	5'7" x 5'8"	32 sq. ft	Yes

2981 Geneva Lane, Lake in the Hills, McHenry County, Illinois,  
United States, 60156



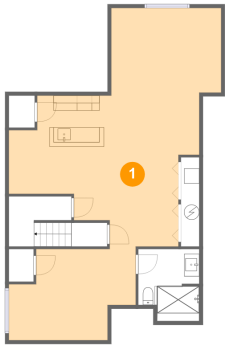
Room dimensions

Floor 3 Total:1117sqft    Excluded: 42sqft

#		Max Dimensions	sqft	Included
17	Primary Bath	8'8" x 9'6"	82 sq. ft	Yes
18	Primary Bedroom	13'0" x 16'11"	218 sq. ft	Yes
19	Hall	15'7" x 6'7"	157 sq. ft	Yes
20	Bedroom	13'0" x 12'0"	138 sq. ft	Yes
21	Bath	10'4" x 4'9"	49 sq. ft	Yes
22	Open To Below	5'9" x 7'5"	42 sq. ft	No
23	W.I.C.	8'2" x 5'7"	46 sq. ft	Yes
24	Bedroom	12'9" x 14'7"	151 sq. ft	Yes
25	Bedroom	15'5" x 12'0"	153 sq. ft	Yes

2981 Geneva Lane, Lake in the Hills, McHenry County, Illinois,  
United States, 60156

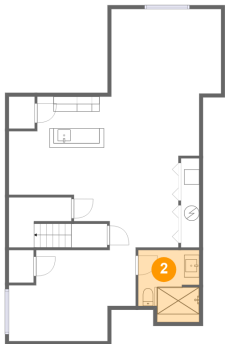
1 Floor 1 - Basement



Max Dimensions: 28'1" x 43'10"  
Calculated Area: 710 sq. ft  
Included: No

Heated: Yes  
Finished: No  
Enclosed: Yes  
Contiguous: Yes  
Permitted: Yes  
Wet space: No  
Addition: No  
Conversion: No

2 Floor 1 - Bath

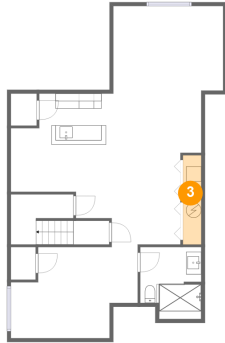


Max Dimensions: 8'1" x 9'6"  
Calculated Area: 71 sq. ft  
Included: No

Heated: Yes  
Finished: Yes  
Enclosed: Yes  
Contiguous: No  
Permitted: Yes  
Wet space: Yes  
Addition: No  
Conversion: No

2981 Geneva Lane, Lake in the Hills, McHenry County, Illinois,  
United States, 60156

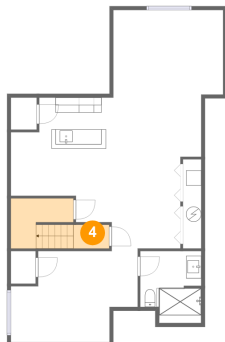
### 3 Floor 1 - Utility



Max Dimensions: 2'5" x 11'9"  
Calculated Area: 28 sq. ft  
Included: No

Heated: Yes  
Finished: No  
Enclosed: Yes  
Contiguous: Yes  
Permitted: Yes  
Wet space: No  
Addition: No  
Conversion: No

### 4 Floor 1 - Hall



Max Dimensions: 4'9" x 3'2"  
Calculated Area: 68 sq. ft  
Included: Yes

Heated: Yes  
Finished: Yes  
Enclosed: Yes  
Contiguous: Yes  
Permitted: Yes  
Wet space: No  
Addition: No  
Conversion: No

### 5 Floor 2 - Kitchen



Max Dimensions: 16'10" x 18'1"  
Calculated Area: 246 sq. ft  
Included: Yes

Heated: Yes  
Finished: Yes  
Enclosed: Yes  
Contiguous: Yes  
Permitted: Yes  
Wet space: No  
Addition: No  
Conversion: No



## 6 Floor 2 - Covered Patio



Max Dimensions: 20'8" x 14'11"  
Calculated Area: 308 sq. ft  
Included: No

Heated: No  
Finished: Yes  
Enclosed: No  
Contiguous: Yes  
Permitted: Yes  
Wet space: No  
Addition: No  
Conversion: No

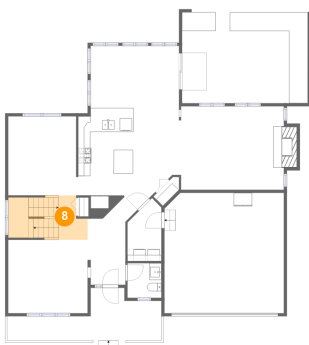
## 7 Floor 2 - Porch



Max Dimensions: 25'3" x 8'8"  
Calculated Area: 142 sq. ft  
Included: No

Heated: No  
Finished: Yes  
Enclosed: No  
Contiguous: Yes  
Permitted: Yes  
Wet space: No  
Addition: No  
Conversion: No

## 8 Floor 2 - Hall

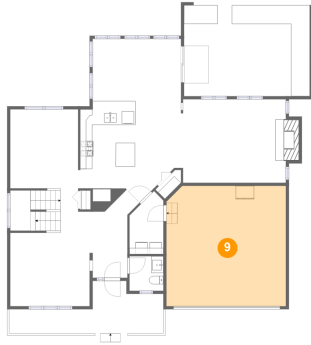


Max Dimensions: 4'9" x 7'3"  
Calculated Area: 84 sq. ft  
Included: Yes

Heated: Yes  
Finished: Yes  
Enclosed: Yes  
Contiguous: Yes  
Permitted: Yes  
Wet space: No  
Addition: No  
Conversion: No

2981 Geneva Lane, Lake in the Hills, McHenry County, Illinois,  
United States, 60156

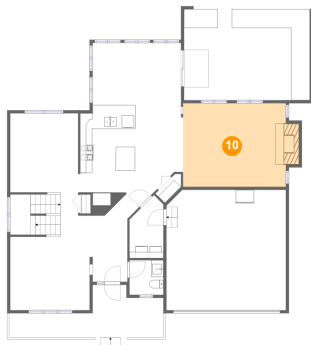
## 9 Floor 2 - Garage



Max Dimensions: 19'7" x 19'9"  
Calculated Area: 384 sq. ft  
Included: No

Heated: No  
Finished: No  
Enclosed: Yes  
Contiguous: Yes  
Permitted: Yes  
Wet space: No  
Addition: No  
Conversion: No

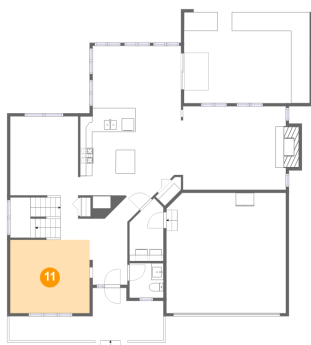
## 10 Floor 2 - Living Room



Max Dimensions: 16'11" x 13'8"  
Calculated Area: 246 sq. ft  
Included: Yes

Heated: Yes  
Finished: Yes  
Enclosed: Yes  
Contiguous: Yes  
Permitted: Yes  
Wet space: No  
Addition: No  
Conversion: No

## 11 Floor 2 - Office

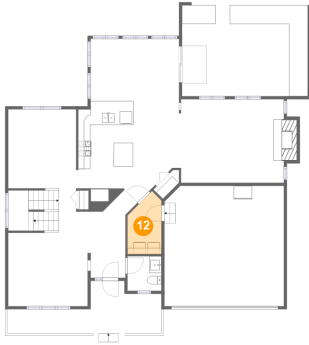


Max Dimensions: 13'0" x 12'0"  
Calculated Area: 157 sq. ft  
Included: Yes

Heated: Yes  
Finished: Yes  
Enclosed: Yes  
Contiguous: Yes  
Permitted: Yes  
Wet space: No  
Addition: No  
Conversion: No

2981 Geneva Lane, Lake in the Hills, McHenry County, Illinois,  
United States, 60156

## 12 Floor 2 - Laundry



Max Dimensions: 5'6" x  
10'4"  
Calculated Area: 48 sq. ft  
Included: Yes

Heated: Yes  
Finished: Yes  
Enclosed: Yes  
Contiguous:  
Yes  
Permitted: Yes  
Wet space: No  
Addition: No  
Conversion: No

## 13 Floor 2 - Dining Area



Max Dimensions: 11'2" x  
13'0"  
Calculated Area: 145 sq. ft  
Included: Yes

Heated: Yes  
Finished: Yes  
Enclosed: Yes  
Contiguous:  
Yes  
Permitted: Yes  
Wet space: No  
Addition: No  
Conversion: No

## 14 Floor 2 - Foyer



Max Dimensions: 9'4" x  
14'8"  
Calculated Area: 83 sq. ft  
Included: Yes

Heated: Yes  
Finished: Yes  
Enclosed: Yes  
Contiguous:  
Yes  
Permitted: Yes  
Wet space: No  
Addition: No  
Conversion: No

2981 Geneva Lane, Lake in the Hills, McHenry County, Illinois,  
United States, 60156

## 15 Floor 2 - Breakfast Nook



Max Dimensions: 14'6" x 9'11"  
Calculated Area: 144 sq. ft  
Included: Yes

Heated: Yes  
Finished: Yes  
Enclosed: Yes  
Contiguous: Yes  
Permitted: Yes  
Wet space: No  
Addition: No  
Conversion: No

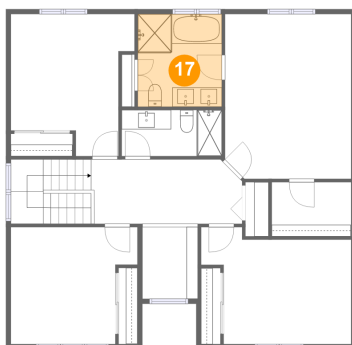
## 16 Floor 2 - WC



Max Dimensions: 5'7" x 5'8"  
Calculated Area: 32 sq. ft  
Included: Yes

Heated: Yes  
Finished: Yes  
Enclosed: Yes  
Contiguous: Yes  
Permitted: Yes  
Wet space: Yes  
Addition: No  
Conversion: No

## 17 Floor 3 - Primary Bath



Max Dimensions: 8'8" x 9'6"  
Calculated Area: 82 sq. ft  
Included: Yes

Heated: Yes  
Finished: Yes  
Enclosed: Yes  
Contiguous: Yes  
Permitted: Yes  
Wet space: Yes  
Addition: No  
Conversion: No

2981 Geneva Lane, Lake in the Hills, McHenry County, Illinois,  
United States, 60156

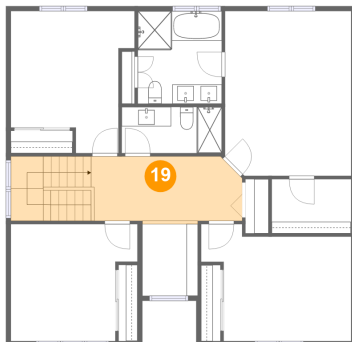
### 18 Floor 3 - Primary Bedroom



Max Dimensions: 13'0" x 16'11"  
Calculated Area: 218 sq. ft  
Included: Yes

Heated: Yes  
Finished: Yes  
Enclosed: Yes  
Contiguous: Yes  
Permitted: Yes  
Wet space: No  
Addition: No  
Conversion: No

### 19 Floor 3 - Hall



Max Dimensions: 15'7" x 6'7"  
Calculated Area: 157 sq. ft  
Included: Yes

Heated: Yes  
Finished: Yes  
Enclosed: Yes  
Contiguous: Yes  
Permitted: Yes  
Wet space: No  
Addition: No  
Conversion: No

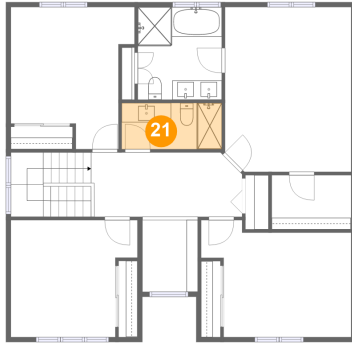
### 20 Floor 3 - Bedroom



Max Dimensions: 13'0" x 12'0"  
Calculated Area: 138 sq. ft  
Included: Yes

Heated: Yes  
Finished: Yes  
Enclosed: Yes  
Contiguous: Yes  
Permitted: Yes  
Wet space: No  
Addition: No  
Conversion: No

### 21 Floor 3 - Bath



Max Dimensions: 10'4" x 4'9"  
Calculated Area: 49 sq. ft  
Included: Yes

Heated: Yes  
Finished: Yes  
Enclosed: Yes  
Contiguous: Yes  
Permitted: Yes  
Wet space: Yes  
Addition: No  
Conversion: No

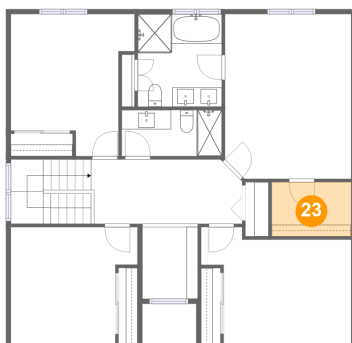
### 22 Floor 3 - Open To Below



Max Dimensions: 5'9" x 7'5"  
Calculated Area: 42 sq. ft  
Included: No

Heated: No  
Finished: No  
Enclosed: No  
Contiguous: Yes  
Permitted: No  
Wet space: No  
Addition: No  
Conversion: No

### 23 Floor 3 - W.I.C.



Max Dimensions: 8'2" x 5'7"  
Calculated Area: 46 sq. ft  
Included: Yes

Heated: Yes  
Finished: Yes  
Enclosed: Yes  
Contiguous: Yes  
Permitted: Yes  
Wet space: No  
Addition: No  
Conversion: No

2981 Geneva Lane, Lake in the Hills, McHenry County, Illinois,  
United States, 60156

24 Floor 3 - Bedroom



Max Dimensions: 12'9" x 14'7"  
Calculated Area: 151 sq. ft  
Included: Yes

Heated: Yes  
Finished: Yes  
Enclosed: Yes  
Contiguous: Yes  
Permitted: Yes  
Wet space: No  
Addition: No  
Conversion: No

25 Floor 3 - Bedroom



Max Dimensions: 15'5" x 12'0"  
Calculated Area: 153 sq. ft  
Included: Yes

Heated: Yes  
Finished: Yes  
Enclosed: Yes  
Contiguous: Yes  
Permitted: Yes  
Wet space: No  
Addition: No  
Conversion: No