



Home report


10121 109th Street Southeast, Snohomish, Snohomish County,
Washington, United States, 98296




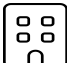
Property summary


 **1** Garages


 **3** Bedrooms

 **2** Bathrooms

 **0** Half baths

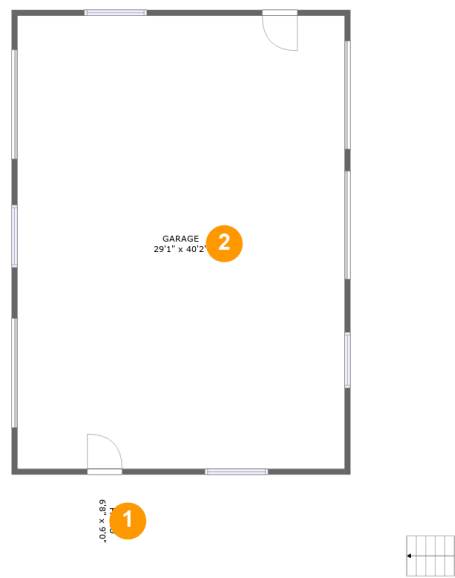
 **3** Floors

 **2,194** Gross living area sqft

 **3,952** Total sqft

Home report

10121 109th Street Southeast, Snohomish, Snohomish County,
Washington, United States, 98296



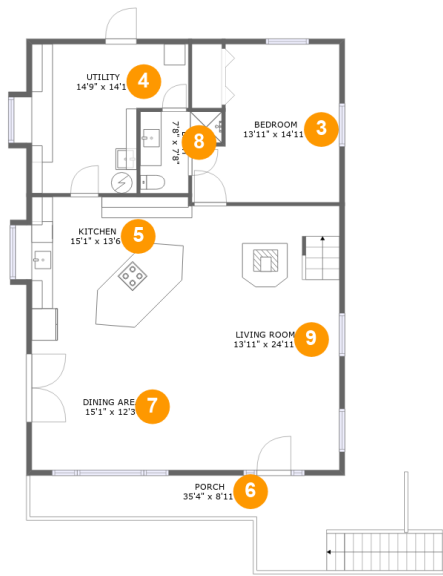
Room dimensions

Floor 1 Total sqft: 1278 Living area: 0

#		Dimensions	sqft	Counted as living area
1	Patio	6'8" x 9'0"	41 sq. ft	No
2	Garage	29'1" x 40'2"	1167 sq. ft	No

Home report

10121 109th Street Southeast, Snohomish, Snohomish County,
Washington, United States, 98296



Room dimensions

Floor 2 Total sqft: 1437 Living area: 1237

#		Dimensions	sqft	Counted as living area
3	Bedroom	13'11" x 14'11"	177 sq. ft	Yes
4	Utility	14'9" x 14'1"	169 sq. ft	Yes
5	Kitchen	15'1" x 13'6"	204 sq. ft	Yes
6	Porch	35'4" x 8'11"	182 sq. ft	No
7	Dining Area	15'1" x 12'3"	185 sq. ft	Yes
8	Bath	7'8" x 7'8"	44 sq. ft	Yes
9	Living Room	13'11" x 24'11"	347 sq. ft	Yes

Home report

10121 109th Street Southeast, Snohomish, Snohomish County,
Washington, United States, 98296

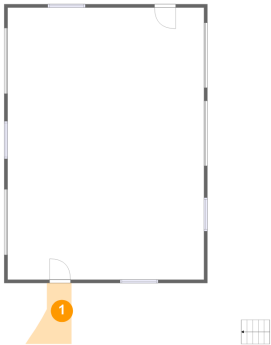


Room dimensions

Floor 3 Total sqft: 1237 Living area: 957

#		Dimensions	sqft	Counted as living area
10	Bedroom	13'11" x 14'11"	160 sq. ft	Yes
11	Primary Bedroom	14'9" x 14'1"	208 sq. ft	Yes
12	Family Room	15'11" x 15'10"	258 sq. ft	Yes
13	Open To Below	12'9" x 21'9"	265 sq. ft	No
14	Bath	11'4" x 9'6"	103 sq. ft	Yes
15	Hall	10'0" x 9'10"	98 sq. ft	Yes

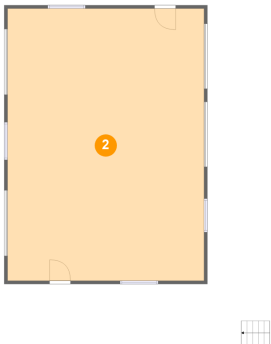
1 Floor 1 - Patio



Dimensions: 6'8" x 9'0"
Area: 41 sq. ft
Counted as living area: No

Heated: No
Finished: Yes
Enclosed: No
Contiguous: Yes
Permitted: Yes
Wet space: No
Addition: No
Conversion: No

2 Floor 1 - Garage



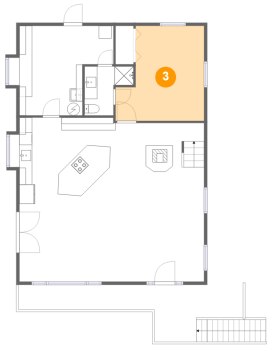
Dimensions: 29'1" x 40'2"
Area: 1167 sq. ft
Counted as living area: No

Heated: No
Finished: No
Enclosed: Yes
Contiguous: Yes
Permitted: Yes
Wet space: No
Addition: No
Conversion: No

Home report

10121 109th Street Southeast, Snohomish, Snohomish County,
Washington, United States, 98296

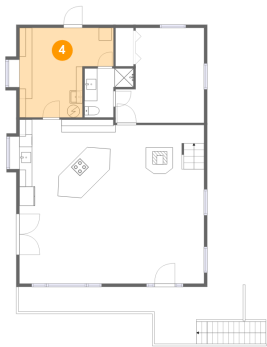
3 Floor 2 - Bedroom



Dimensions: 13'11" x 14'11"
Area: 177 sq. ft
Counted as living area: Yes

Heated: Yes
Finished: Yes
Enclosed: Yes
Contiguous: Yes
Permitted: Yes
Wet space: No
Addition: No
Conversion: No

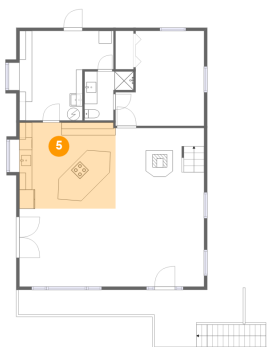
4 Floor 2 - Utility



Dimensions: 14'9" x 14'1"
Area: 169 sq. ft
Counted as living area: Yes

Heated: Yes
Finished: Yes
Enclosed: Yes
Contiguous: Yes
Permitted: Yes
Wet space: No
Addition: No
Conversion: No

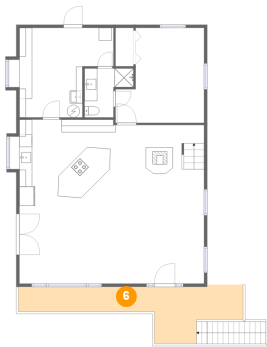
5 Floor 2 - Kitchen



Dimensions: 15'1" x 13'6"
Area: 204 sq. ft
Counted as living area: Yes

Heated: Yes
Finished: Yes
Enclosed: Yes
Contiguous: Yes
Permitted: Yes
Wet space: No
Addition: No
Conversion: No

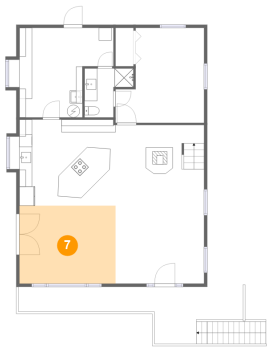
6 Floor 2 - Porch



Dimensions: 35'4" x 8'11"
Area: 182 sq. ft
Counted as living area: No

Heated: No
Finished: Yes
Enclosed: No
Contiguous: Yes
Permitted: Yes
Wet space: No
Addition: No
Conversion: No

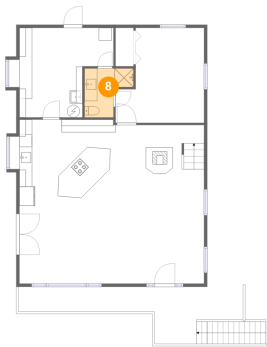
7 Floor 2 - Dining Area



Dimensions: 15'1" x 12'3"
Area: 185 sq. ft
Counted as living area: Yes

Heated: Yes
Finished: Yes
Enclosed: Yes
Contiguous: Yes
Permitted: Yes
Wet space: No
Addition: No
Conversion: No

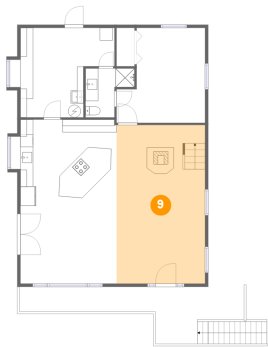
8 Floor 2 - Bath



Dimensions: 7'8" x 7'8"
Area: 44 sq. ft
Counted as living area: Yes

Heated: Yes
Finished: Yes
Enclosed: Yes
Contiguous: Yes
Permitted: Yes
Wet space: Yes
Addition: No
Conversion: No

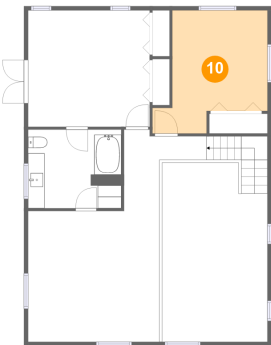
9 Floor 2 - Living Room



Dimensions: 13'11" x 24'11"
Area: 347 sq. ft
Counted as living area: Yes

Heated: Yes
Finished: Yes
Enclosed: Yes
Contiguous: Yes
Permitted: Yes
Wet space: No
Addition: No
Conversion: No

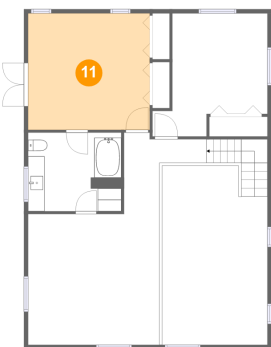
10 Floor 3 - Bedroom



Dimensions: 13'11" x 14'11"
Area: 160 sq. ft
Counted as living area: Yes

Heated: Yes
Finished: Yes
Enclosed: Yes
Contiguous: Yes
Permitted: Yes
Wet space: No
Addition: No
Conversion: No

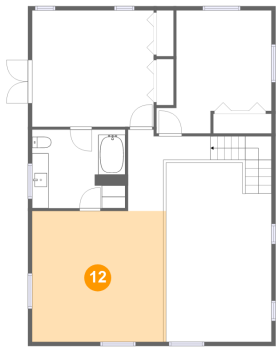
11 Floor 3 - Primary Bedroom



Dimensions: 14'9" x 14'1"
Area: 208 sq. ft
Counted as living area: Yes

Heated: Yes
Finished: Yes
Enclosed: Yes
Contiguous: Yes
Permitted: Yes
Wet space: No
Addition: No
Conversion: No

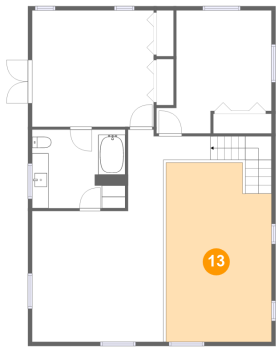
12 Floor 3 - Family Room



Dimensions: 15'11" x 15'10"
Area: 258 sq. ft
Counted as living area: Yes

Heated: Yes
Finished: Yes
Enclosed: Yes
Contiguous: Yes
Permitted: Yes
Wet space: No
Addition: No
Conversion: No

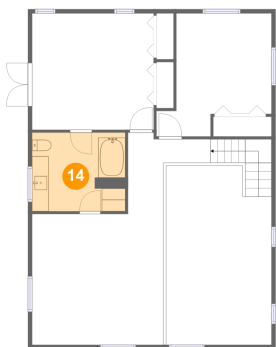
13 Floor 3 - Open To Below



Dimensions: 12'9" x 21'9"
Area: 265 sq. ft
Counted as living area: No

Heated: No
Finished: No
Enclosed: No
Contiguous: Yes
Permitted: No
Wet space: No
Addition: No
Conversion: No

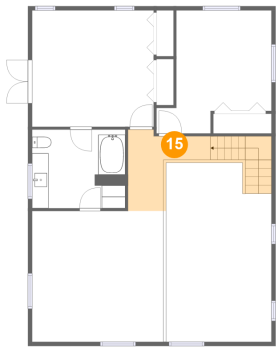
14 Floor 3 - Bath



Dimensions: 11'4" x 9'6"
Area: 103 sq. ft
Counted as living area: Yes

Heated: Yes
Finished: Yes
Enclosed: Yes
Contiguous: Yes
Permitted: Yes
Wet space: Yes
Addition: No
Conversion: No

15 Floor 3 - Hall



Dimensions: 10'0" x 9'10"
Area: 98 sq. ft
Counted as living area: Yes

Heated: Yes
Finished: Yes
Enclosed: Yes
Contiguous: Yes
Permitted: Yes
Wet space: No
Addition: No
Conversion: No