

300 Admirals Way, Glade Hill, Franklin County, Virginia, United States, 24092



Property summary

 **1** Garages

 **5** Bedrooms

 **4** Bathrooms

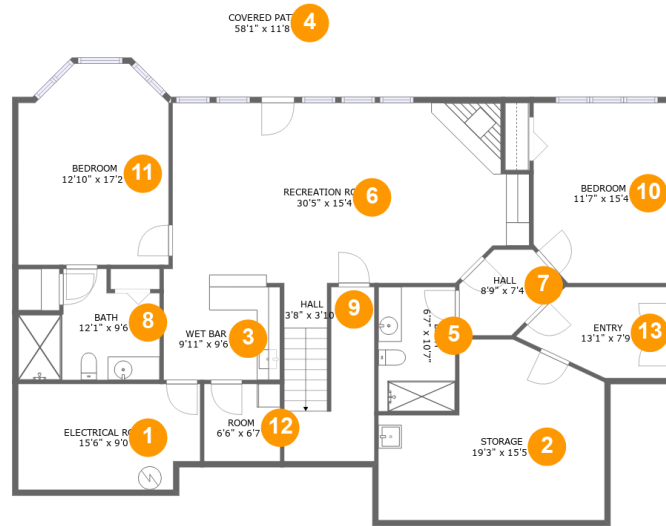
 **0** Half baths

 **3** Floors

 **3,982** Gross living area sqft

 **7,261** Total sqft

300 Admirals Way, Glade Hill, Franklin County, Virginia, United States, 24092



Room dimensions

Floor 1

Total sqft: 2543

Living area: 1505

#		Dimensions	sqft	Counted as living area
1	Electrical Room	15'6" x 9'0"	134 sq. ft	No
2	Storage	19'3" x 15'5"	238 sq. ft	No
3	Wet Bar	9'11" x 9'6"	83 sq. ft	Yes
4	Covered Patio	58'1" x 11'8"	633 sq. ft	No
5	Bath	6'7" x 10'7"	69 sq. ft	Yes
6	Recreation Room	30'5" x 15'4"	438 sq. ft	Yes
7	Hall	8'9" x 7'4"	47 sq. ft	Yes
8	Bath	12'1" x 9'6"	90 sq. ft	Yes
9	Hall	3'8" x 3'10"	112 sq. ft	Yes
10	Bedroom	11'7" x 15'4"	174 sq. ft	Yes
11	Bedroom	12'10" x 17'2"	204 sq. ft	Yes

**300 Admirals Way, Glade Hill, Franklin County,
Virginia, United States, 24092**

#		Dimensions	sqft	Counted as living area
12	Room	6'6" x 6'7"	43 sq. ft	Yes
13	Entry	13'1" x 7'9"	80 sq. ft	Yes

300 Admirals Way, Glade Hill, Franklin County, Virginia, United States, 24092



Room dimensions

Floor 2

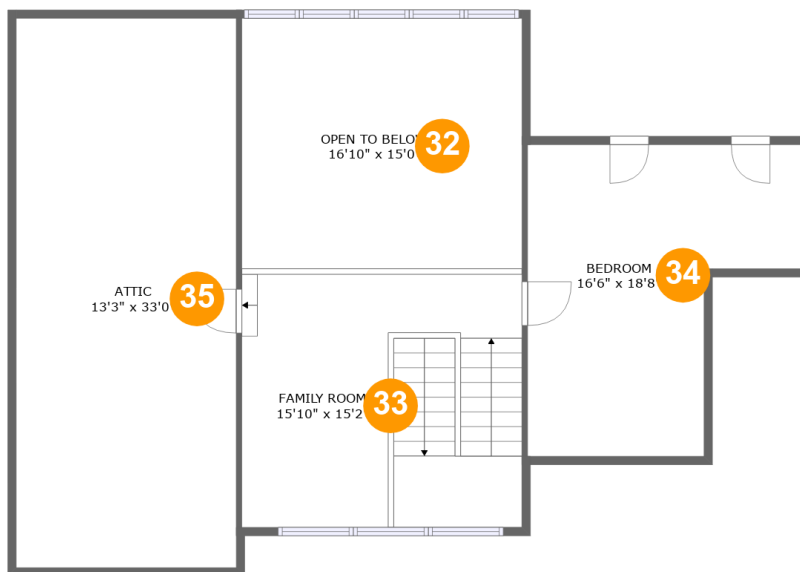
Total sqft: 3430 Living area: 1961

#		Dimensions	sqft	Counted as living area
14	Primary Bath	10'4" x 15'0"	124 sq. ft	Yes
15	Balcony	57'6" x 11'4"	608 sq. ft	No
16	Bath	5'8" x 10'0"	57 sq. ft	Yes
17	Screened Porch	11'1" x 14'5"	160 sq. ft	No
18	W.I.C.	14'9" x 8'1"	119 sq. ft	Yes
19	Primary Bedroom	14'3" x 15'0"	214 sq. ft	Yes
20	Deck	10'4" x 8'6"	79 sq. ft	No
21	Dining Area	13'7" x 13'5"	163 sq. ft	Yes
22	Foyer	9'1" x 11'8"	104 sq. ft	Yes
23	Garage	23'5" x 24'1"	564 sq. ft	No
24	Kitchen	13'7" x 13'7"	178 sq. ft	Yes

**300 Admirals Way, Glade Hill, Franklin County,
Virginia, United States, 24092**

#		Dimensions	sqft	Counted as living area
25	Living Room	16'10" x 19'3"	407 sq. ft	Yes
26	W.I.C.	5'8" x 6'0"	34 sq. ft	Yes
27	Bedroom	13'4" x 11'9"	157 sq. ft	Yes
28	Hall	5'10" x 9'4"	47 sq. ft	Yes
29	Hall	10'2" x 8'1"	53 sq. ft	Yes
30	WC	3'3" x 6'2"	20 sq. ft	Yes
31	Laundry	12'3" x 9'0"	101 sq. ft	Yes

300 Admirals Way, Glade Hill, Franklin County, Virginia, United States, 24092



Room dimensions

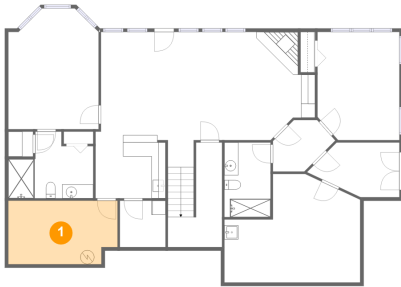
Floor 3

Total sqft: 1288 Living area: 516

#		Dimensions	sqft	Counted as living area
32	Open To Below	16'10" x 15'0"	253 sq. ft	No
33	Family Room	15'10" x 15'2"	261 sq. ft	Yes
34	Bedroom	16'6" x 18'8"	224 sq. ft	Yes
35	Attic	13'3" x 33'0"	232 sq. ft	No

300 Admirals Way, Glade Hill, Franklin County, Virginia, United States, 24092

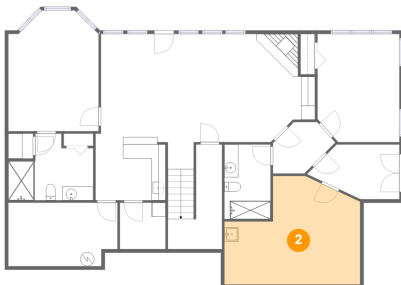
1 Floor 1 - Electrical Room



Dimensions: 15'6" x 9'0"
Area: 134 sq. ft
Counted as living area: No

Heated: No
Finished: No
Enclosed: Yes
Contiguous: Yes
Permitted: Yes
Wet space: No
Addition: No
Conversion: No

2 Floor 1 - Storage

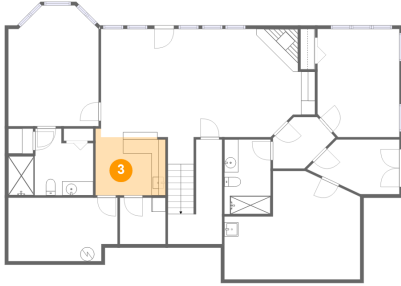


Dimensions: 19'3" x 15'5"
Area: 238 sq. ft
Counted as living area: No

Heated: No
Finished: No
Enclosed: No
Contiguous: Yes
Permitted: Yes
Wet space: No
Addition: No
Conversion: No

**300 Admirals Way, Glade Hill, Franklin County,
Virginia, United States, 24092**

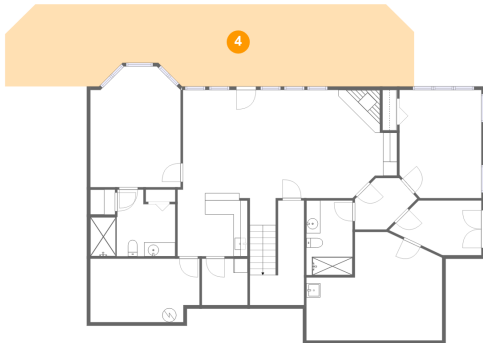
3 Floor 1 - Wet Bar



Dimensions: 9'11" x 9'6"
Area: 83 sq. ft
Counted as living area: Yes

Heated: Yes
Finished: Yes
Enclosed: Yes
Contiguous: Yes
Permitted: Yes
Wet space: No
Addition: No
Conversion: No

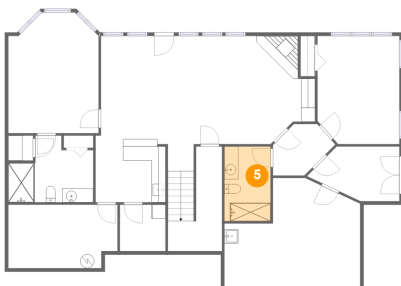
4 Floor 1 - Covered Patio



Dimensions: 58'1" x 11'8"
Area: 633 sq. ft
Counted as living area: No

Heated: No
Finished: Yes
Enclosed: No
Contiguous: Yes
Permitted: Yes
Wet space: No
Addition: No
Conversion: No

5 Floor 1 - Bath

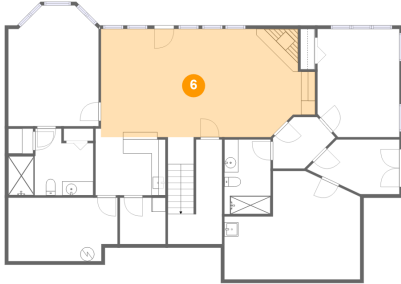


Dimensions: 6'7" x 10'7"
Area: 69 sq. ft
Counted as living area: Yes

Heated: Yes
Finished: Yes
Enclosed: Yes
Contiguous: Yes
Permitted: Yes
Wet space: Yes
Addition: No
Conversion: No

**300 Admirals Way, Glade Hill, Franklin County,
Virginia, United States, 24092**

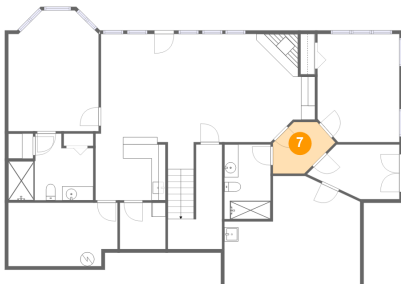
6 Floor 1 - Recreation Room



Dimensions: 30'5" x 15'4"
Area: 438 sq. ft
Counted as living area: Yes

Heated: Yes
Finished: Yes
Enclosed: Yes
Contiguous: Yes
Permitted: Yes
Wet space: No
Addition: No
Conversion: No

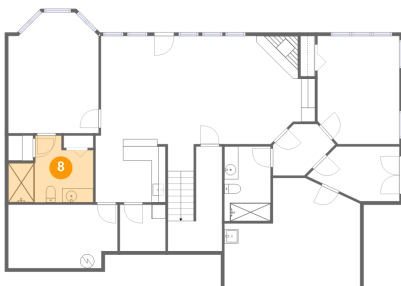
7 Floor 1 - Hall



Dimensions: 8'9" x 7'4"
Area: 47 sq. ft
Counted as living area: Yes

Heated: Yes
Finished: Yes
Enclosed: Yes
Contiguous: Yes
Permitted: Yes
Wet space: No
Addition: No
Conversion: No

8 Floor 1 - Bath

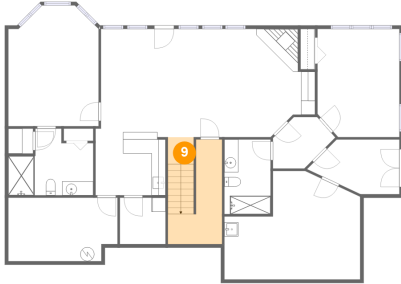


Dimensions: 12'1" x 9'6"
Area: 90 sq. ft
Counted as living area: Yes

Heated: Yes
Finished: Yes
Enclosed: Yes
Contiguous: Yes
Permitted: Yes
Wet space: Yes
Addition: No
Conversion: No

**300 Admirals Way, Glade Hill, Franklin County,
Virginia, United States, 24092**

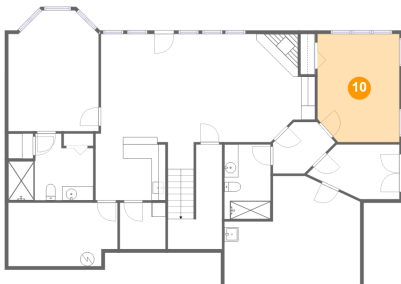
9 Floor 1 - Hall



Dimensions: 3'8" x 3'10"
Area: 112 sq. ft
Counted as living area: Yes

Heated: Yes
Finished: Yes
Enclosed: Yes
Contiguous: Yes
Permitted: Yes
Wet space: No
Addition: No
Conversion: No

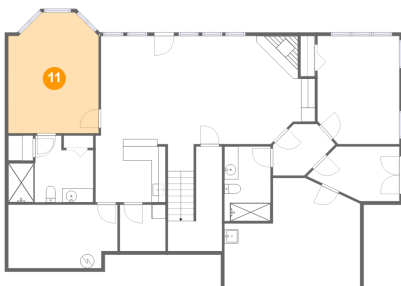
10 Floor 1 - Bedroom



Dimensions: 11'7" x 15'4"
Area: 174 sq. ft
Counted as living area: Yes

Heated: Yes
Finished: Yes
Enclosed: Yes
Contiguous: Yes
Permitted: Yes
Wet space: No
Addition: No
Conversion: No

11 Floor 1 - Bedroom

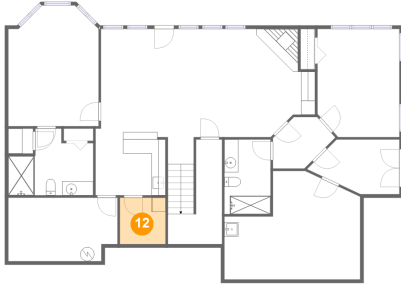


Dimensions: 12'10" x 17'2"
Area: 204 sq. ft
Counted as living area: Yes

Heated: Yes
Finished: Yes
Enclosed: Yes
Contiguous: Yes
Permitted: Yes
Wet space: No
Addition: No
Conversion: No

**300 Admirals Way, Glade Hill, Franklin County,
Virginia, United States, 24092**

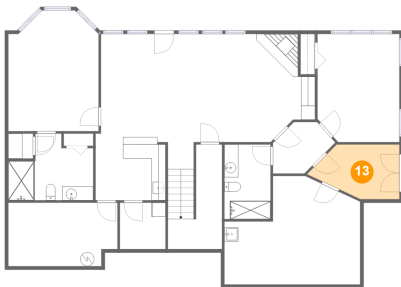
12 Floor 1 - Room



Dimensions: 6'6" x 6'7"
Area: 43 sq. ft
Counted as living area: Yes

Heated: Yes
Finished: Yes
Enclosed: Yes
Contiguous: Yes
Permitted: Yes
Wet space: No
Addition: No
Conversion: No

13 Floor 1 - Entry



Dimensions: 13'1" x 7'9"
Area: 80 sq. ft
Counted as living area: Yes

Heated: Yes
Finished: Yes
Enclosed: Yes
Contiguous: Yes
Permitted: Yes
Wet space: No
Addition: No
Conversion: No

14 Floor 2 - Primary Bath



Dimensions: 10'4" x 15'0"
Area: 124 sq. ft
Counted as living area: Yes

Heated: Yes
Finished: Yes
Enclosed: Yes
Contiguous: Yes
Permitted: Yes
Wet space: Yes
Addition: No
Conversion: No

**300 Admirals Way, Glade Hill, Franklin County,
Virginia, United States, 24092**

15 Floor 2 - Balcony



Dimensions: 57'6" x 11'4"
Area: 608 sq. ft
Counted as living area: No

Heated: No
Finished: Yes
Enclosed: No
Contiguous: Yes
Permitted: Yes
Wet space: No
Addition: No
Conversion: No

16 Floor 2 - Bath



Dimensions: 5'8" x 10'0"
Area: 57 sq. ft
Counted as living area: Yes

Heated: Yes
Finished: Yes
Enclosed: Yes
Contiguous: Yes
Permitted: Yes
Wet space: Yes
Addition: No
Conversion: No

17 Floor 2 - Screened Porch



Dimensions: 11'1" x 14'5"
Area: 160 sq. ft
Counted as living area: No

Heated: No
Finished: Yes
Enclosed: No
Contiguous: Yes
Permitted: Yes
Wet space: No
Addition: No
Conversion: No

**300 Admirals Way, Glade Hill, Franklin County,
Virginia, United States, 24092**

18 Floor 2 - W.I.C.



Dimensions: 14'9" x 8'1"
Area: 119 sq. ft
Counted as living area: Yes

Heated: Yes
Finished: Yes
Enclosed: Yes
Contiguous: Yes
Permitted: Yes
Wet space: No
Addition: No
Conversion: No

19 Floor 2 - Primary Bedroom



Dimensions: 14'3" x 15'0"
Area: 214 sq. ft
Counted as living area: Yes

Heated: Yes
Finished: Yes
Enclosed: Yes
Contiguous: Yes
Permitted: Yes
Wet space: No
Addition: No
Conversion: No

20 Floor 2 - Deck



Dimensions: 10'4" x 8'6"
Area: 79 sq. ft
Counted as living area: No

Heated: No
Finished: Yes
Enclosed: No
Contiguous: Yes
Permitted: Yes
Wet space: No
Addition: No
Conversion: No

**300 Admirals Way, Glade Hill, Franklin County,
Virginia, United States, 24092**

21 Floor 2 - Dining Area



Dimensions: 13'7" x 13'5"
Area: 163 sq. ft
Counted as living area: Yes

Heated: Yes
Finished: Yes
Enclosed: Yes
Contiguous: Yes
Permitted: Yes
Wet space: No
Addition: No
Conversion: No

22 Floor 2 - Foyer



Dimensions: 9'1" x 11'8"
Area: 104 sq. ft
Counted as living area: Yes

Heated: Yes
Finished: Yes
Enclosed: Yes
Contiguous: Yes
Permitted: Yes
Wet space: No
Addition: No
Conversion: No

23 Floor 2 - Garage

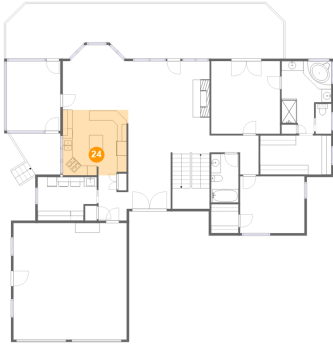


Dimensions: 23'5" x 24'1"
Area: 564 sq. ft
Counted as living area: No

Heated: No
Finished: No
Enclosed: Yes
Contiguous: Yes
Permitted: Yes
Wet space: No
Addition: No
Conversion: No

**300 Admirals Way, Glade Hill, Franklin County,
Virginia, United States, 24092**

24 Floor 2 - Kitchen



Dimensions: 13'7" x 13'7"
Area: 178 sq. ft
Counted as living area: Yes

Heated: Yes
Finished: Yes
Enclosed: Yes
Contiguous: Yes
Permitted: Yes
Wet space: No
Addition: No
Conversion: No

25 Floor 2 - Living Room



Dimensions: 16'10" x 19'3"
Area: 407 sq. ft
Counted as living area: Yes

Heated: Yes
Finished: Yes
Enclosed: Yes
Contiguous: Yes
Permitted: Yes
Wet space: No
Addition: No
Conversion: No

26 Floor 2 - W.I.C.



Dimensions: 5'8" x 6'0"
Area: 34 sq. ft
Counted as living area: Yes

Heated: Yes
Finished: Yes
Enclosed: Yes
Contiguous: Yes
Permitted: Yes
Wet space: No
Addition: No
Conversion: No

300 Admirals Way, Glade Hill, Franklin County, Virginia, United States, 24092

27 Floor 2 - Bedroom



Dimensions: 13'4" x 11'9"
Area: 157 sq. ft
Counted as living area: Yes

Heated: Yes
Finished: Yes
Enclosed: Yes
Contiguous: Yes
Permitted: Yes
Wet space: No
Addition: No
Conversion: No

28 Floor 2 - Hall



Dimensions: 5'10" x 9'4"
Area: 47 sq. ft
Counted as living area: Yes

Heated: Yes
Finished: Yes
Enclosed: Yes
Contiguous: Yes
Permitted: Yes
Wet space: No
Addition: No
Conversion: No

29 Floor 2 - Hall



Dimensions: 10'2" x 8'1"
Area: 53 sq. ft
Counted as living area: Yes

Heated: Yes
Finished: Yes
Enclosed: Yes
Contiguous: Yes
Permitted: Yes
Wet space: No
Addition: No
Conversion: No

**300 Admirals Way, Glade Hill, Franklin County,
Virginia, United States, 24092**

30 Floor 2 - WC



Dimensions: 3'3" x 6'2"
Area: 20 sq. ft
Counted as living area: Yes

Heated: Yes
Finished: Yes
Enclosed: Yes
Contiguous: Yes
Permitted: Yes
Wet space: Yes
Addition: No
Conversion: No

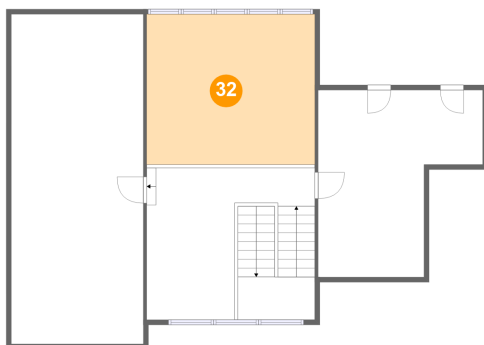
31 Floor 2 - Laundry



Dimensions: 12'3" x 9'0"
Area: 101 sq. ft
Counted as living area: Yes

Heated: Yes
Finished: Yes
Enclosed: Yes
Contiguous: Yes
Permitted: Yes
Wet space: No
Addition: No
Conversion: No

32 Floor 3 - Open To Below

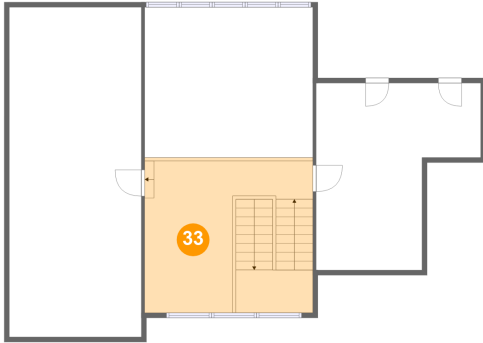


Dimensions: 16'10" x 15'0"
Area: 253 sq. ft
Counted as living area: No

Heated: No
Finished: No
Enclosed: No
Contiguous: Yes
Permitted: No
Wet space: No
Addition: No
Conversion: No

**300 Admirals Way, Glade Hill, Franklin County,
Virginia, United States, 24092**

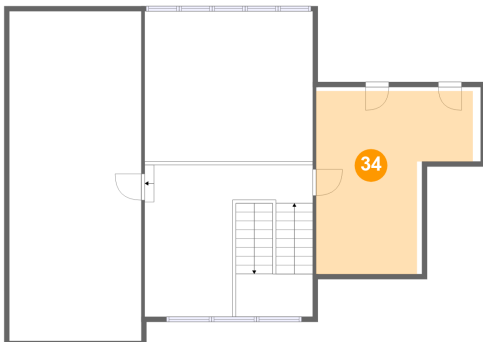
33 Floor 3 - Family Room



Dimensions: 15'10" x 15'2"
Area: 261 sq. ft
Counted as living area: Yes

Heated: Yes
Finished: Yes
Enclosed: Yes
Contiguous: Yes
Permitted: Yes
Wet space: No
Addition: No
Conversion: No

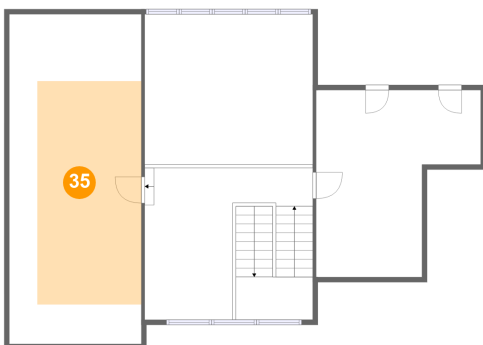
34 Floor 3 - Bedroom



Dimensions: 16'6" x 18'8"
Area: 224 sq. ft
Counted as living area: Yes

Heated: Yes
Finished: Yes
Enclosed: Yes
Contiguous: Yes
Permitted: Yes
Wet space: No
Addition: No
Conversion: No

35 Floor 3 - Attic



Dimensions: 13'3" x 33'0"
Area: 232 sq. ft
Counted as living area: No

Heated: No
Finished: No
Enclosed: Yes
Contiguous: Yes
Permitted: Yes
Wet space: No
Addition: No
Conversion: No