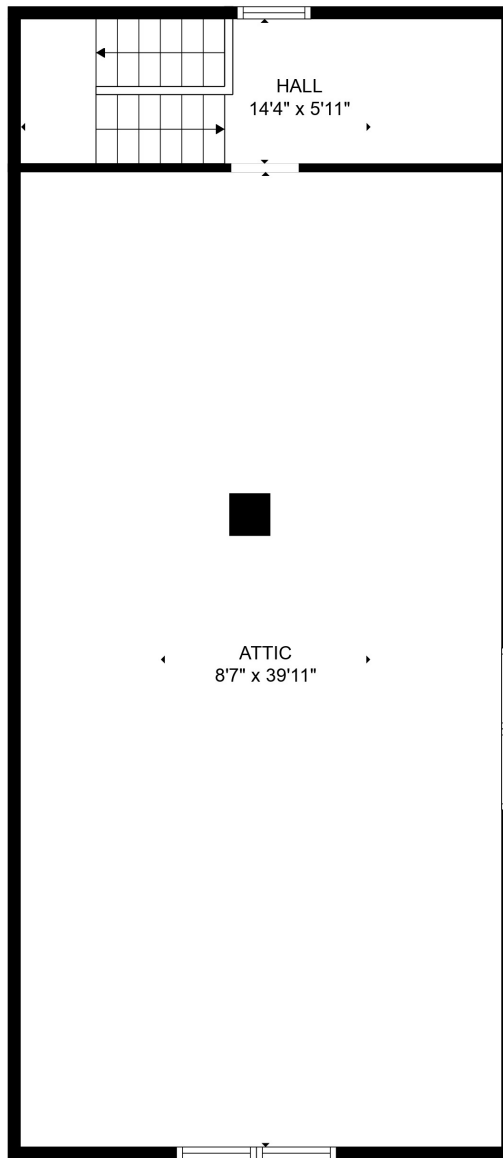


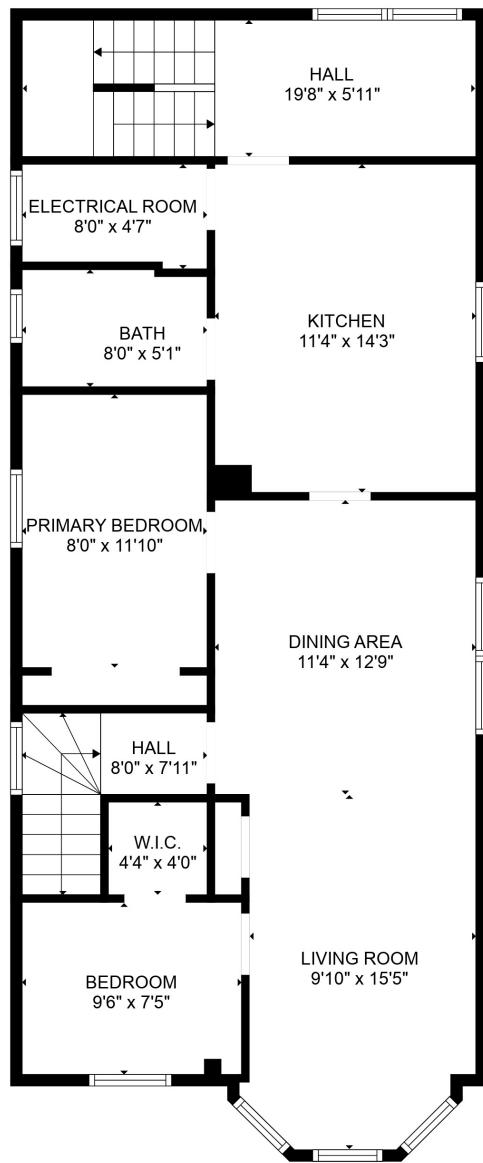
GROSS INTERNAL AREA
 FLOOR 1: 867 sq. ft, FLOOR 2: 893 sq. ft, FLOOR 3: 307 sq. ft
 EXCLUDED AREAS: ELECTRICAL ROOM: 35 sq. ft, ATTIC: 343 sq. ft, LOW CEILING: 262 sq. ft
 TOTAL: 2067 sq. ft

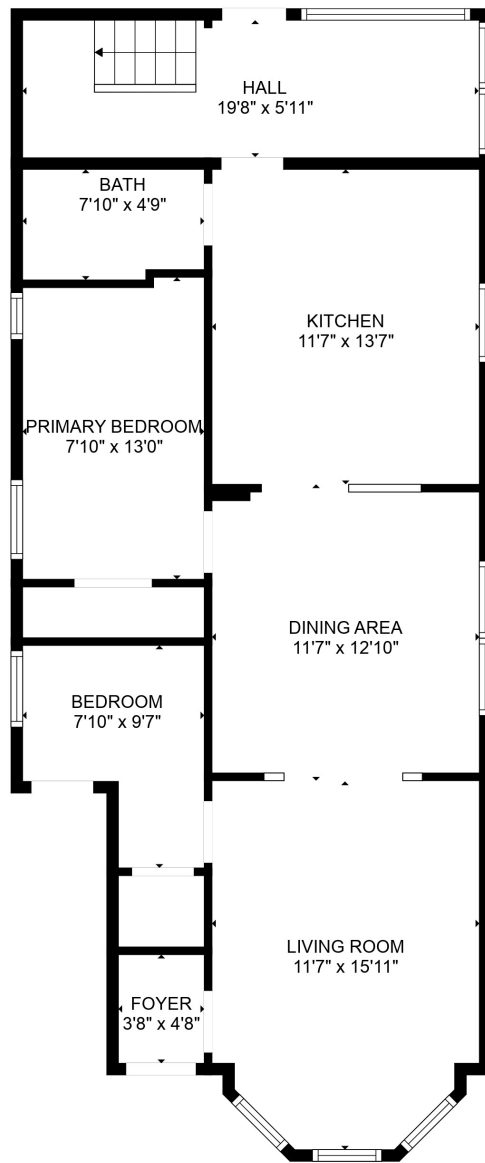
SIZES AND DIMENSIONS ARE APPROXIMATE, ACTUAL MAY VARY.



GROSS INTERNAL AREA
FLOOR 1: 867 sq. ft, FLOOR 2: 893 sq. ft, FLOOR 3: 307 sq. ft
EXCLUDED AREAS: ELECTRICAL ROOM: 35 sq. ft, ATTIC: 343 sq. ft, LOW CEILING: 262 sq. ft
TOTAL: 2067 sq. ft

SIZES AND DIMENSIONS ARE APPROXIMATE, ACTUAL MAY VARY.





GROSS INTERNAL AREA
 FLOOR 1: 867 sq. ft, FLOOR 2: 893 sq. ft, FLOOR 3: 307 sq. ft
 EXCLUDED AREAS: ELECTRICAL ROOM: 35 sq. ft, ATTIC: 343 sq. ft, LOW CEILING: 262 sq. ft
 TOTAL: 2067 sq. ft

SIZES AND DIMENSIONS ARE APPROXIMATE, ACTUAL MAY VARY.