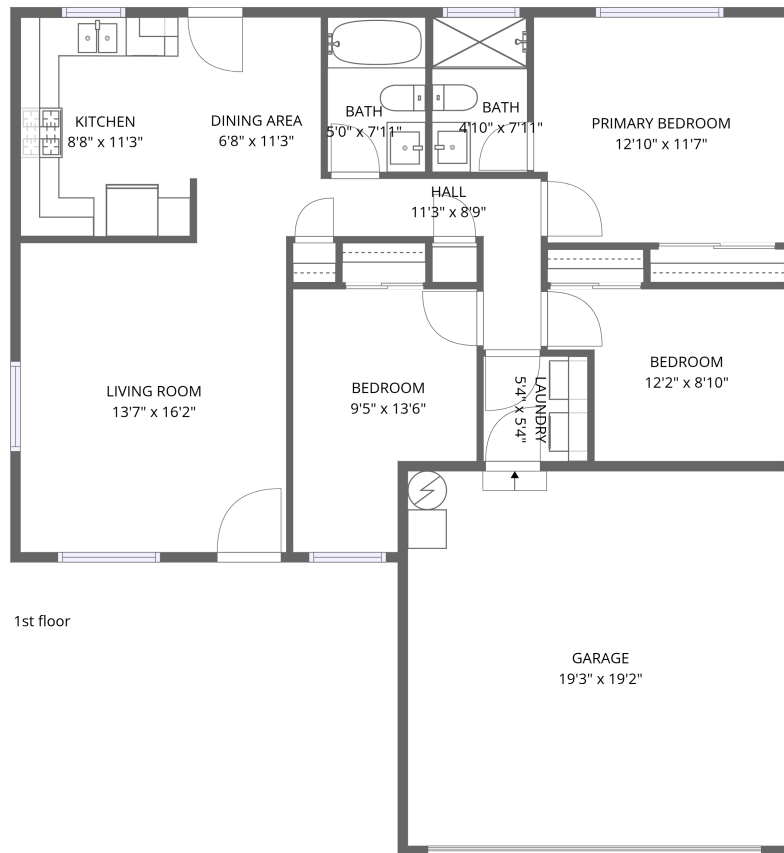


Home data report

17745 Honey Locust Court, Cold Springs, Reno, Washoe County, Nevada, United States, 89508



Total Area: 979 sq. ft

1st Floor: 979 sq. ft

Excluded: Garage 370 sq. ft, Walls: 94 sq. ft

Property summary



1
Floors



3
Bedrooms



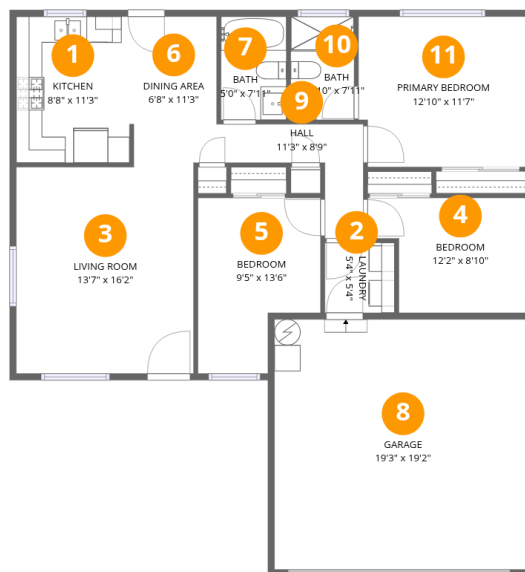
2
Bathrooms



1
Garages

Home data report

17745 Honey Locust Court, Cold Springs, Reno, Washoe County, Nevada, United States, 89508



Room dimensions

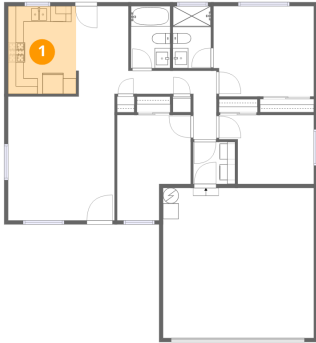
Floor 1

Total:979sqft Excluded: 370sqft

#		Dimensions	sqft	Counted as living area
1	Kitchen	8'8" x 11'3"	97 sq. ft	Yes
2	Laundry	5'4" x 5'4"	29 sq. ft	Yes
3	Living Room	13'7" x 16'2"	220 sq. ft	Yes
4	Bedroom	12'2" x 8'10"	107 sq. ft	Yes
5	Bedroom	9'5" x 13'6"	127 sq. ft	Yes
6	Dining Area	6'8" x 11'3"	75 sq. ft	Yes
7	Bath	5'0" x 7'11"	40 sq. ft	Yes
8	Garage	19'3" x 19'2"	370 sq. ft	No
9	Hall	11'3" x 8'9"	98 sq. ft	Yes
10	Bath	4'10" x 7'11"	39 sq. ft	Yes
11	Primary Bedroom	12'10" x 11'7"	148 sq. ft	Yes

17745 Honey Locust Court, Cold Springs, Reno, Washoe County, Nevada, United States, 89508

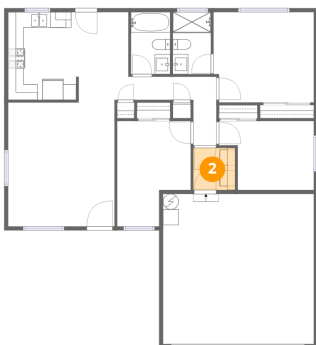
1 Floor 1 - Kitchen



Dimensions: 8'8" x 11'3"
Area: 97 sq. ft
Counted as living area: Yes

Heated: Yes
Finished: Yes
Enclosed: Yes
Contiguous: Yes
Permitted: Yes
Wet space: No
Addition: No
Conversion: No

2 Floor 1 - Laundry

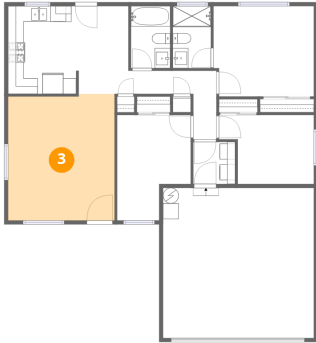


Dimensions: 5'4" x 5'4"
Area: 29 sq. ft
Counted as living area: Yes

Heated: Yes
Finished: Yes
Enclosed: Yes
Contiguous: Yes
Permitted: Yes
Wet space: No
Addition: No
Conversion: No

17745 Honey Locust Court, Cold Springs, Reno, Washoe County, Nevada, United States, 89508

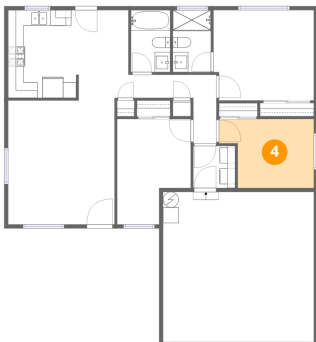
3 Floor 1 - Living Room



Dimensions: 13'7" x 16'2"
Area: 220 sq. ft
Counted as living area: Yes

Heated: Yes
Finished: Yes
Enclosed: Yes
Contiguous: Yes
Permitted: Yes
Wet space: No
Addition: No
Conversion: No

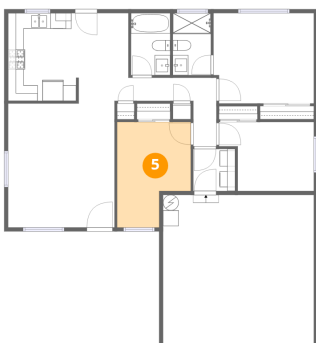
4 Floor 1 - Bedroom



Dimensions: 12'2" x 8'10"
Area: 107 sq. ft
Counted as living area: Yes

Heated: Yes
Finished: Yes
Enclosed: Yes
Contiguous: Yes
Permitted: Yes
Wet space: No
Addition: No
Conversion: No

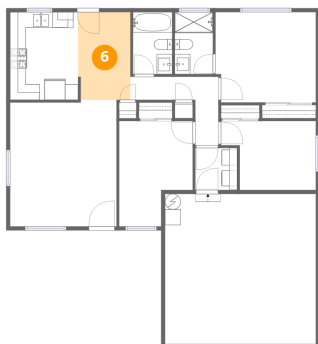
5 Floor 1 - Bedroom



Dimensions: 9'5" x 13'6"
Area: 127 sq. ft
Counted as living area: Yes

Heated: Yes
Finished: Yes
Enclosed: Yes
Contiguous: Yes
Permitted: Yes
Wet space: No
Addition: No
Conversion: No

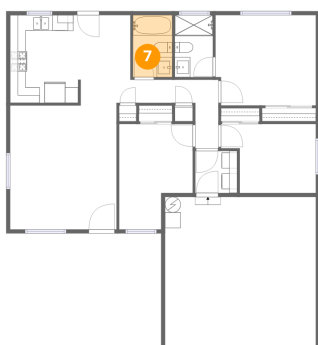
6 Floor 1 - Dining Area



Dimensions: 6'8" x 11'3"
Area: 75 sq. ft
Counted as living area: Yes

Heated: Yes
Finished: Yes
Enclosed: Yes
Contiguous: Yes
Permitted: Yes
Wet space: No
Addition: No
Conversion: No

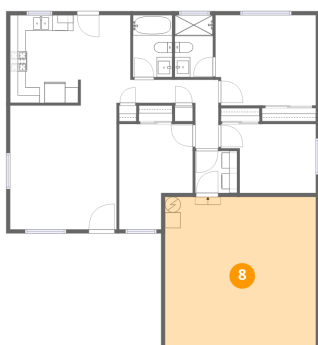
7 Floor 1 - Bath



Dimensions: 5'0" x 7'11"
Area: 40 sq. ft
Counted as living area: Yes

Heated: Yes
Finished: Yes
Enclosed: Yes
Contiguous: Yes
Permitted: Yes
Wet space: Yes
Addition: No
Conversion: No

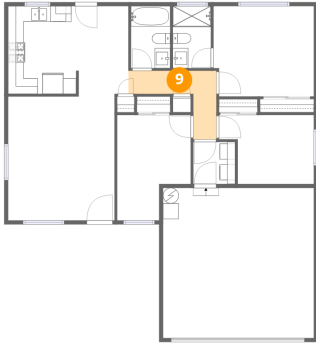
8 Floor 1 - Garage



Dimensions: 19'3" x 19'2"
Area: 370 sq. ft
Counted as living area: No

Heated: No
Finished: No
Enclosed: Yes
Contiguous: Yes
Permitted: Yes
Wet space: No
Addition: No
Conversion: No

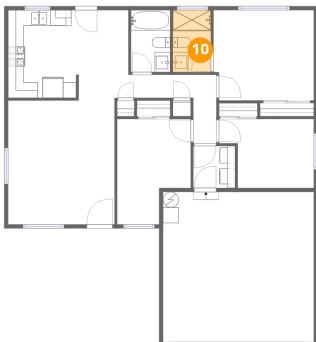
9 Floor 1 - Hall



Dimensions: 11'3" x 8'9"
Area: 98 sq. ft
Counted as living area: Yes

Heated: Yes
Finished: Yes
Enclosed: Yes
Contiguous: Yes
Permitted: Yes
Wet space: No
Addition: No
Conversion: No

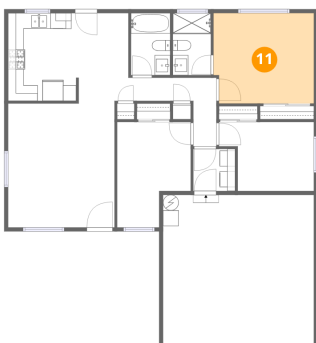
10 Floor 1 - Bath



Dimensions: 4'10" x 7'11"
Area: 39 sq. ft
Counted as living area: Yes

Heated: Yes
Finished: Yes
Enclosed: Yes
Contiguous: Yes
Permitted: Yes
Wet space: Yes
Addition: No
Conversion: No

11 Floor 1 - Primary Bedroom



Dimensions: 12'10" x 11'7"
Area: 148 sq. ft
Counted as living area: Yes

Heated: Yes
Finished: Yes
Enclosed: Yes
Contiguous: Yes
Permitted: Yes
Wet space: No
Addition: No
Conversion: No