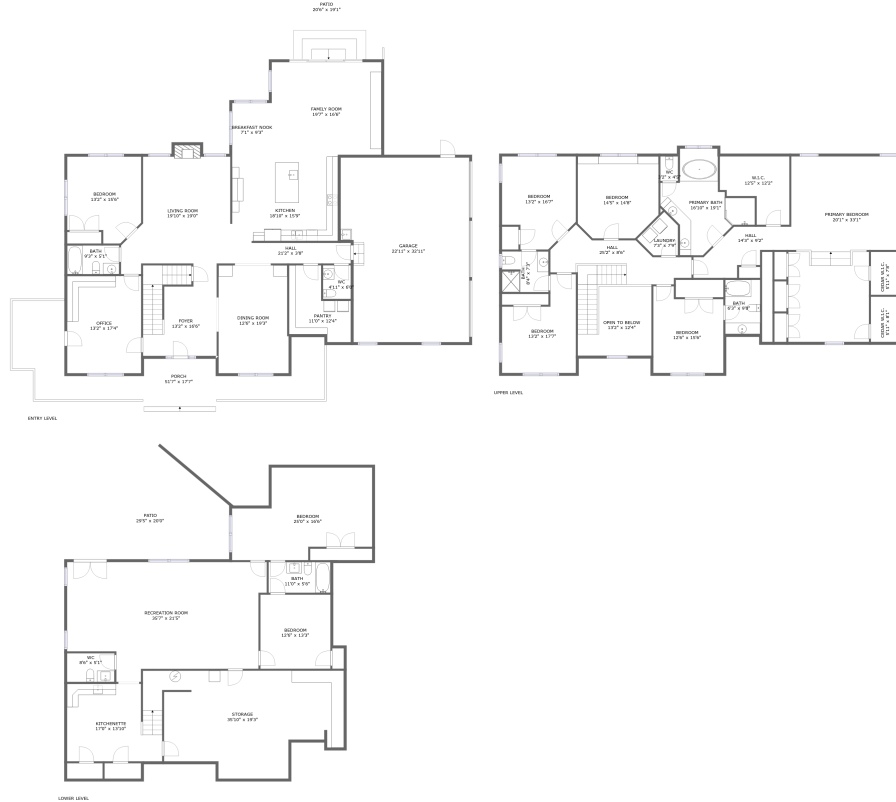


3845 Eagle Crest Drive, Parkway Acres, Roanoke, Roanoke County, Virginia, United States, 24018



Property summary

 **1** Garages

 **8** Bedrooms

 **5** Bathrooms

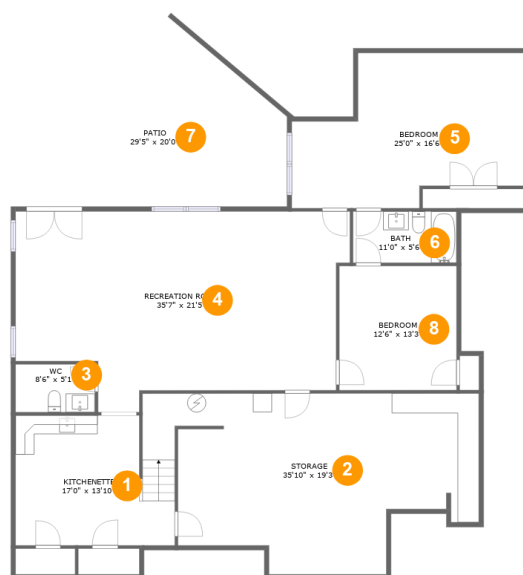
 **2** Half baths

 **3** Floors

 **6,526** Gross living area sqft

 **9,262** Total sqft

3845 Eagle Crest Drive, Parkway Acres, Roanoke, Roanoke County, Virginia, United States, 24018



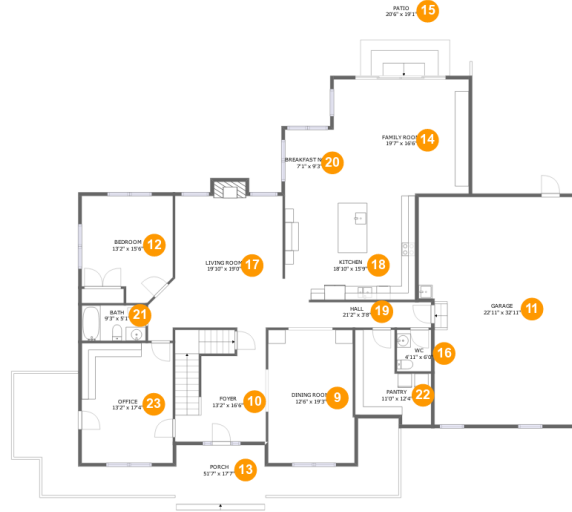
Room dimensions

Floor 1

Total sqft: 2678 Living area: 1676

#		Dimensions	sqft	Counted as living area
1	Kitchenette	17'0" x 13'10"	214 sq. ft	Yes
2	Storage	35'10" x 19'3"	549 sq. ft	No
3	WC	8'6" x 5'1"	43 sq. ft	Yes
4	Recreation Room	35'7" x 21'5"	642 sq. ft	Yes
5	Bedroom	25'0" x 16'6"	335 sq. ft	Yes
6	Bath	11'0" x 5'6"	60 sq. ft	Yes
7	Patio	29'5" x 20'0"	420 sq. ft	No
8	Bedroom	12'6" x 13'3"	165 sq. ft	Yes

3845 Eagle Crest Drive, Parkway Acres, Roanoke, Roanoke County, Virginia, United States, 24018



Room dimensions

Floor 2

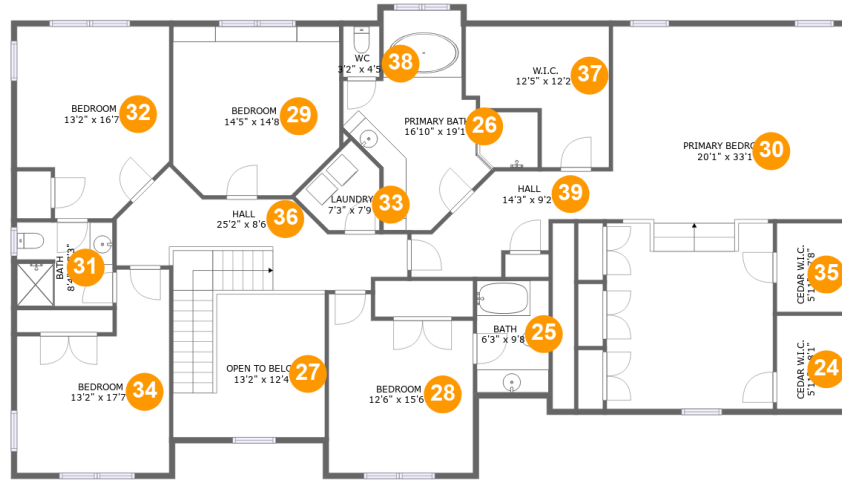
Total sqft: 3917 Living area: 2320

#		Dimensions	sqft	Counted as living area
9	Dining Room	12'6" x 19'3"	237 sq. ft	Yes
10	Foyer	13'2" x 16'6"	209 sq. ft	Yes
11	Garage	22'11" x 32'11"	713 sq. ft	No
12	Bedroom	13'2" x 15'6"	182 sq. ft	Yes
13	Porch	51'7" x 17'7"	444 sq. ft	No
14	Family Room	19'7" x 16'6"	323 sq. ft	Yes
15	Patio	20'6" x 19'1"	392 sq. ft	No
16	WC	4'11" x 6'0"	30 sq. ft	Yes
17	Living Room	19'10" x 19'0"	336 sq. ft	Yes
18	Kitchen	18'10" x 15'9"	291 sq. ft	Yes
19	Hall	21'2" x 3'8"	78 sq. ft	Yes

**3845 Eagle Crest Drive, Parkway Acres, Roanoke,
Roanoke County, Virginia, United States, 24018**

#		Dimensions	sqft	Counted as living area
20	Breakfast Nook	7'1" x 9'3"	65 sq. ft	Yes
21	Bath	9'3" x 5'1"	47 sq. ft	Yes
22	Pantry	11'0" x 12'4"	108 sq. ft	Yes
23	Office	13'2" x 17'4"	229 sq. ft	Yes

**3845 Eagle Crest Drive, Parkway Acres, Roanoke,
Roanoke County, Virginia, United States, 24018**



Room dimensions

Floor 3

Total sqft: 2667 Living area: 2530

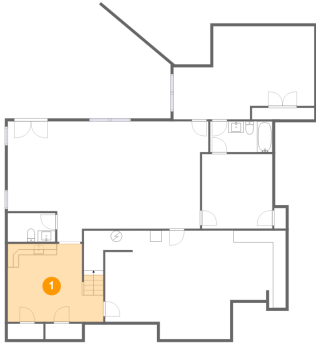
#		Dimensions	sqft	Counted as living area
24	Cedar W.i.c.	5'11" x 8'1"	48 sq. ft	Yes
25	Bath	6'3" x 9'8"	60 sq. ft	Yes
26	Primary Bath	16'10" x 19'1"	182 sq. ft	Yes
27	Open To Below	13'2" x 12'4"	130 sq. ft	No
28	Bedroom	12'6" x 15'6"	173 sq. ft	Yes
29	Bedroom	14'5" x 14'8"	199 sq. ft	Yes
30	Primary Bedroom	20'1" x 33'1"	571 sq. ft	Yes
31	Bath	8'4" x 7'3"	59 sq. ft	Yes
32	Bedroom	13'2" x 16'7"	192 sq. ft	Yes
33	Laundry	7'3" x 7'9"	38 sq. ft	Yes
34	Bedroom	13'2" x 17'7"	182 sq. ft	Yes

**3845 Eagle Crest Drive, Parkway Acres, Roanoke,
Roanoke County, Virginia, United States, 24018**

#		Dimensions	sqft	Counted as living area
35	Cedar W.i.c.	5'11" x 7'8"	45 sq. ft	Yes
36	Hall	25'2" x 8'6"	202 sq. ft	Yes
37	W.I.C.	12'5" x 12'2"	116 sq. ft	Yes
38	WC	3'2" x 4'5"	14 sq. ft	Yes
39	Hall	14'3" x 9'2"	98 sq. ft	Yes

3845 Eagle Crest Drive, Parkway Acres, Roanoke, Roanoke County, Virginia, United States, 24018

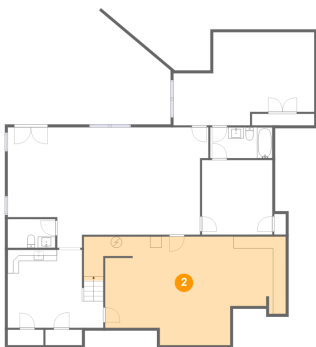
1 Floor 1 - Kitchenette



Dimensions: 17'0" x 13'10"
Area: 214 sq. ft
Counted as living area: Yes

Heated: Yes
Finished: Yes
Enclosed: Yes
Contiguous: Yes
Permitted: Yes
Wet space: No
Addition: No
Conversion: No

2 Floor 1 - Storage

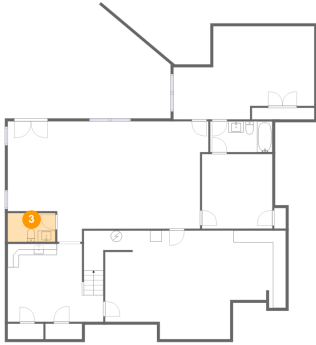


Dimensions: 35'10" x 19'3"
Area: 549 sq. ft
Counted as living area: No

Heated: No
Finished: No
Enclosed: No
Contiguous: Yes
Permitted: Yes
Wet space: No
Addition: No
Conversion: No

**3845 Eagle Crest Drive, Parkway Acres, Roanoke,
Roanoke County, Virginia, United States, 24018**

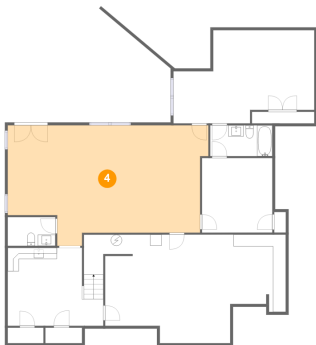
3 Floor 1 - WC



Dimensions: 8'6" x 5'1"
Area: 43 sq. ft
Counted as living area: Yes

Heated: Yes
Finished: Yes
Enclosed: Yes
Contiguous: Yes
Permitted: Yes
Wet space: Yes
Addition: No
Conversion: No

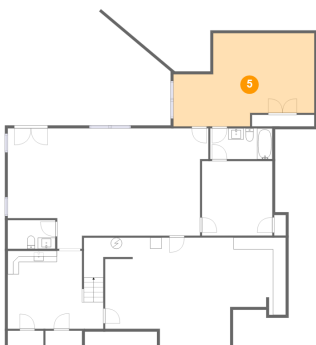
4 Floor 1 - Recreation Room



Dimensions: 35'7" x 21'5"
Area: 642 sq. ft
Counted as living area: Yes

Heated: Yes
Finished: Yes
Enclosed: Yes
Contiguous: Yes
Permitted: Yes
Wet space: No
Addition: No
Conversion: No

5 Floor 1 - Bedroom

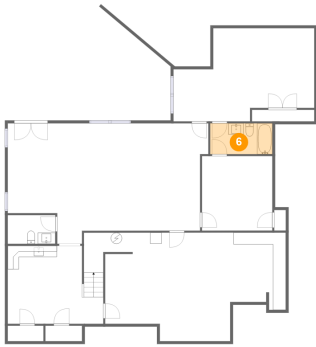


Dimensions: 25'0" x 16'6"
Area: 335 sq. ft
Counted as living area: Yes

Heated: Yes
Finished: Yes
Enclosed: Yes
Contiguous: Yes
Permitted: Yes
Wet space: No
Addition: No
Conversion: No

**3845 Eagle Crest Drive, Parkway Acres, Roanoke,
Roanoke County, Virginia, United States, 24018**

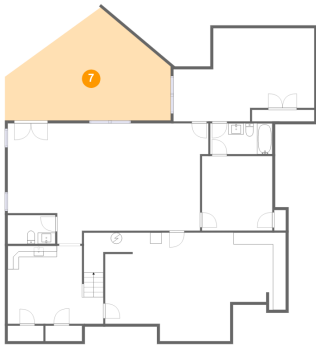
6 Floor 1 - Bath



Dimensions: 11'0" x 5'6"
Area: 60 sq. ft
Counted as living area: Yes

Heated: Yes
Finished: Yes
Enclosed: Yes
Contiguous: Yes
Permitted: Yes
Wet space: Yes
Addition: No
Conversion: No

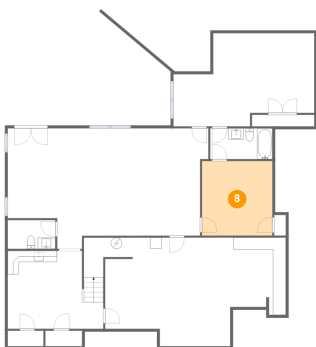
7 Floor 1 - Patio



Dimensions: 29'5" x 20'0"
Area: 420 sq. ft
Counted as living area: No

Heated: No
Finished: Yes
Enclosed: No
Contiguous: Yes
Permitted: Yes
Wet space: No
Addition: No
Conversion: No

8 Floor 1 - Bedroom



Dimensions: 12'6" x 13'3"
Area: 165 sq. ft
Counted as living area: Yes

Heated: Yes
Finished: Yes
Enclosed: Yes
Contiguous: Yes
Permitted: Yes
Wet space: No
Addition: No
Conversion: No

**3845 Eagle Crest Drive, Parkway Acres, Roanoke,
Roanoke County, Virginia, United States, 24018**

9 Floor 2 - Dining Room



Dimensions: 12'6" x 19'3"
Area: 237 sq. ft
Counted as living area: Yes

Heated: Yes
Finished: Yes
Enclosed: Yes
Contiguous: Yes
Permitted: Yes
Wet space: No
Addition: No
Conversion: No

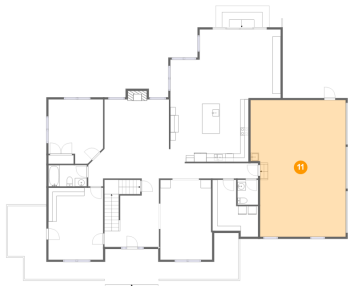
10 Floor 2 - Foyer



Dimensions: 13'2" x 16'6"
Area: 209 sq. ft
Counted as living area: Yes

Heated: Yes
Finished: Yes
Enclosed: Yes
Contiguous: Yes
Permitted: Yes
Wet space: No
Addition: No
Conversion: No

11 Floor 2 - Garage



Dimensions: 22'11" x 32'11"
Area: 713 sq. ft
Counted as living area: No

Heated: No
Finished: No
Enclosed: Yes
Contiguous: Yes
Permitted: Yes
Wet space: No
Addition: No
Conversion: No

3845 Eagle Crest Drive, Parkway Acres, Roanoke, Roanoke County, Virginia, United States, 24018

12 Floor 2 - Bedroom



Dimensions: 13'2" x 15'6"
Area: 182 sq. ft
Counted as living area: Yes

Heated: Yes
Finished: Yes
Enclosed: Yes
Contiguous: Yes
Permitted: Yes
Wet space: No
Addition: No
Conversion: No

13 Floor 2 - Porch



Dimensions: 51'7" x 17'7"
Area: 444 sq. ft
Counted as living area: No

Heated: No
Finished: Yes
Enclosed: No
Contiguous: Yes
Permitted: Yes
Wet space: No
Addition: No
Conversion: No

14 Floor 2 - Family Room

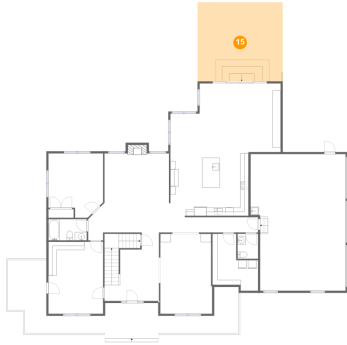


Dimensions: 19'7" x 16'6"
Area: 323 sq. ft
Counted as living area: Yes

Heated: Yes
Finished: Yes
Enclosed: Yes
Contiguous: Yes
Permitted: Yes
Wet space: No
Addition: No
Conversion: No

**3845 Eagle Crest Drive, Parkway Acres, Roanoke,
Roanoke County, Virginia, United States, 24018**

15 Floor 2 - Patio



Dimensions: 20'6" x 19'1"
Area: 392 sq. ft
Counted as living area: No

Heated: No
Finished: Yes
Enclosed: No
Contiguous: Yes
Permitted: Yes
Wet space: No
Addition: No
Conversion: No

16 Floor 2 - WC



Dimensions: 4'11" x 6'0"
Area: 30 sq. ft
Counted as living area: Yes

Heated: Yes
Finished: Yes
Enclosed: Yes
Contiguous: Yes
Permitted: Yes
Wet space: Yes
Addition: No
Conversion: No

17 Floor 2 - Living Room

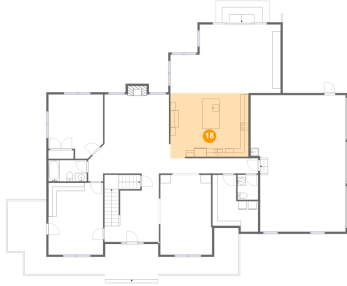


Dimensions: 19'10" x 19'0"
Area: 336 sq. ft
Counted as living area: Yes

Heated: Yes
Finished: Yes
Enclosed: Yes
Contiguous: Yes
Permitted: Yes
Wet space: No
Addition: No
Conversion: No

3845 Eagle Crest Drive, Parkway Acres, Roanoke, Roanoke County, Virginia, United States, 24018

18 Floor 2 - Kitchen



Dimensions: 18'10" x 15'9"
Area: 291 sq. ft
Counted as living area: Yes

Heated: Yes
Finished: Yes
Enclosed: Yes
Contiguous: Yes
Permitted: Yes
Wet space: No
Addition: No
Conversion: No

19 Floor 2 - Hall



Dimensions: 21'2" x 3'8"
Area: 78 sq. ft
Counted as living area: Yes

Heated: Yes
Finished: Yes
Enclosed: Yes
Contiguous: Yes
Permitted: Yes
Wet space: No
Addition: No
Conversion: No

20 Floor 2 - Breakfast Nook



Dimensions: 7'1" x 9'3"
Area: 65 sq. ft
Counted as living area: Yes

Heated: Yes
Finished: Yes
Enclosed: Yes
Contiguous: Yes
Permitted: Yes
Wet space: No
Addition: No
Conversion: No

**3845 Eagle Crest Drive, Parkway Acres, Roanoke,
Roanoke County, Virginia, United States, 24018**

21 Floor 2 - Bath



Dimensions: 9'3" x 5'1"
Area: 47 sq. ft
Counted as living area: Yes

Heated: Yes
Finished: Yes
Enclosed: Yes
Contiguous: Yes
Permitted: Yes
Wet space: Yes
Addition: No
Conversion: No

22 Floor 2 - Pantry



Dimensions: 11'0" x 12'4"
Area: 108 sq. ft
Counted as living area: Yes

Heated: Yes
Finished: Yes
Enclosed: Yes
Contiguous: Yes
Permitted: Yes
Wet space: No
Addition: No
Conversion: No

23 Floor 2 - Office



Dimensions: 13'2" x 17'4"
Area: 229 sq. ft
Counted as living area: Yes

Heated: Yes
Finished: Yes
Enclosed: Yes
Contiguous: Yes
Permitted: Yes
Wet space: No
Addition: No
Conversion: No

3845 Eagle Crest Drive, Parkway Acres, Roanoke, Roanoke County, Virginia, United States, 24018

24 Floor 3 - Cedar W.i.c.



Dimensions: 5'11" x 8'1"
Area: 48 sq. ft
Counted as living area: Yes

Heated: Yes
Finished: Yes
Enclosed: Yes
Contiguous: Yes
Permitted: Yes
Wet space: No
Addition: No
Conversion: No

25 Floor 3 - Bath



Dimensions: 6'3" x 9'8"
Area: 60 sq. ft
Counted as living area: Yes

Heated: Yes
Finished: Yes
Enclosed: Yes
Contiguous: Yes
Permitted: Yes
Wet space: Yes
Addition: No
Conversion: No

26 Floor 3 - Primary Bath



Dimensions: 16'10" x 19'1"
Area: 182 sq. ft
Counted as living area: Yes

Heated: Yes
Finished: Yes
Enclosed: Yes
Contiguous: Yes
Permitted: Yes
Wet space: Yes
Addition: No
Conversion: No

3845 Eagle Crest Drive, Parkway Acres, Roanoke, Roanoke County, Virginia, United States, 24018

27 Floor 3 - Open To Below



Dimensions: 13'2" x 12'4"
Area: 130 sq. ft
Counted as living area: No

Heated: No
Finished: No
Enclosed: No
Contiguous: Yes
Permitted: No
Wet space: No
Addition: No
Conversion: No

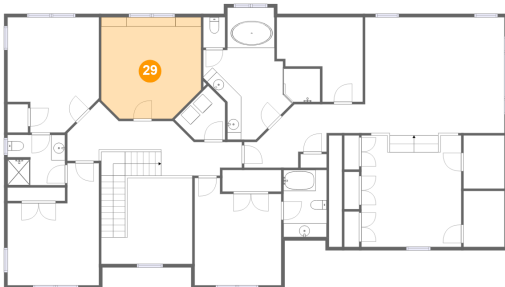
28 Floor 3 - Bedroom



Dimensions: 12'6" x 15'6"
Area: 173 sq. ft
Counted as living area: Yes

Heated: Yes
Finished: Yes
Enclosed: Yes
Contiguous: Yes
Permitted: Yes
Wet space: No
Addition: No
Conversion: No

29 Floor 3 - Bedroom



Dimensions: 14'5" x 14'8"
Area: 199 sq. ft
Counted as living area: Yes

Heated: Yes
Finished: Yes
Enclosed: Yes
Contiguous: Yes
Permitted: Yes
Wet space: No
Addition: No
Conversion: No

3845 Eagle Crest Drive, Parkway Acres, Roanoke, Roanoke County, Virginia, United States, 24018

30 Floor 3 - Primary Bedroom



Dimensions: 20'1" x 33'1"
Area: 571 sq. ft
Counted as living area: Yes

Heated: Yes
Finished: Yes
Enclosed: Yes
Contiguous: Yes
Permitted: Yes
Wet space: No
Addition: No
Conversion: No

31 Floor 3 - Bath



Dimensions: 8'4" x 7'3"
Area: 59 sq. ft
Counted as living area: Yes

Heated: Yes
Finished: Yes
Enclosed: Yes
Contiguous: Yes
Permitted: Yes
Wet space: Yes
Addition: No
Conversion: No

32 Floor 3 - Bedroom

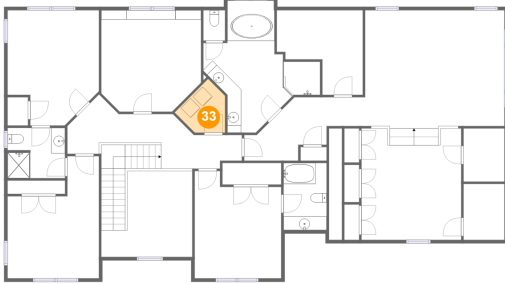


Dimensions: 13'2" x 16'7"
Area: 192 sq. ft
Counted as living area: Yes

Heated: Yes
Finished: Yes
Enclosed: Yes
Contiguous: Yes
Permitted: Yes
Wet space: No
Addition: No
Conversion: No

3845 Eagle Crest Drive, Parkway Acres, Roanoke, Roanoke County, Virginia, United States, 24018

33 Floor 3 - Laundry



Dimensions: 7'3" x 7'9"
Area: 38 sq. ft
Counted as living area: Yes

Heated: Yes
Finished: Yes
Enclosed: Yes
Contiguous: Yes
Permitted: Yes
Wet space: No
Addition: No
Conversion: No

34 Floor 3 - Bedroom



Dimensions: 13'2" x 17'7"
Area: 182 sq. ft
Counted as living area: Yes

Heated: Yes
Finished: Yes
Enclosed: Yes
Contiguous: Yes
Permitted: Yes
Wet space: No
Addition: No
Conversion: No

35 Floor 3 - Cedar W.i.c.

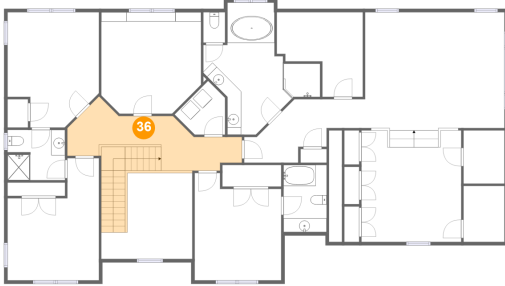


Dimensions: 5'11" x 7'8"
Area: 45 sq. ft
Counted as living area: Yes

Heated: Yes
Finished: Yes
Enclosed: Yes
Contiguous: Yes
Permitted: Yes
Wet space: No
Addition: No
Conversion: No

3845 Eagle Crest Drive, Parkway Acres, Roanoke, Roanoke County, Virginia, United States, 24018

36 Floor 3 - Hall



Dimensions: 25'2" x 8'6"
Area: 202 sq. ft
Counted as living area: Yes

Heated: Yes
Finished: Yes
Enclosed: Yes
Contiguous: Yes
Permitted: Yes
Wet space: No
Addition: No
Conversion: No

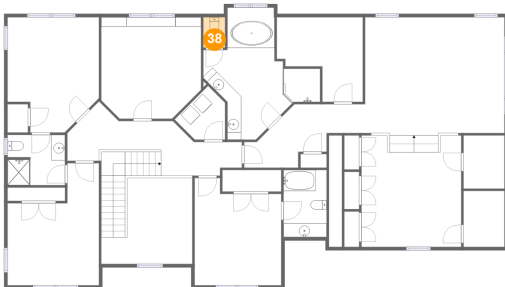
37 Floor 3 - W.I.C.



Dimensions: 12'5" x 12'2"
Area: 116 sq. ft
Counted as living area: Yes

Heated: Yes
Finished: Yes
Enclosed: Yes
Contiguous: Yes
Permitted: Yes
Wet space: No
Addition: No
Conversion: No

38 Floor 3 - WC

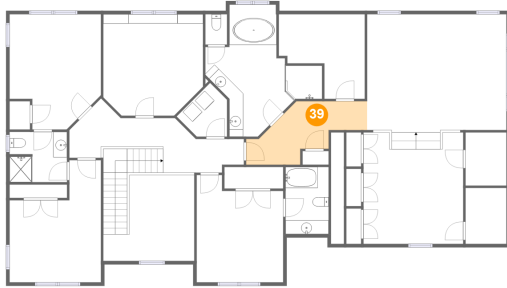


Dimensions: 3'2" x 4'5"
Area: 14 sq. ft
Counted as living area: Yes

Heated: Yes
Finished: Yes
Enclosed: Yes
Contiguous: Yes
Permitted: Yes
Wet space: Yes
Addition: No
Conversion: No

**3845 Eagle Crest Drive, Parkway Acres, Roanoke,
Roanoke County, Virginia, United States, 24018**

39 Floor 3 - Hall



Dimensions: 14'3" x 9'2"
Area: 98 sq. ft
Counted as living area: Yes

Heated: Yes
Finished: Yes
Enclosed: Yes
Contiguous: Yes
Permitted: Yes
Wet space: No
Addition: No
Conversion: No