



Home report


490 Maple Avenue, Ridgewood Junction, Glen Rock, Bergen County, New Jersey, United States, 07452





Property summary


 **1** Garages


 **4** Bedrooms

 **3** Bathrooms

 **0** Half baths

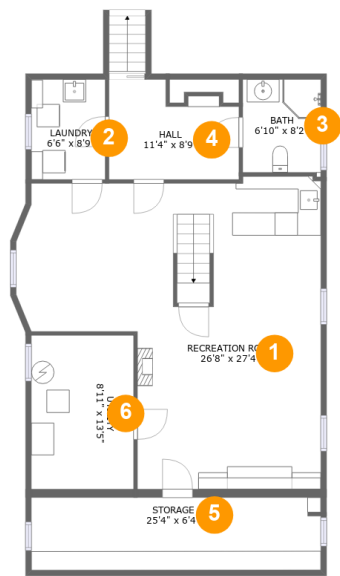
 **3** Floors

 **2,856** Gross living area sqft

 **4,050** Total sqft

Home report

490 Maple Avenue, Ridgewood Junction, Glen Rock, Bergen County, New Jersey, United States, 07452



Room dimensions

Floor 1 Total sqft: 1192    Living area: 876

#		Dimensions	sqft	Counted as living area
1	Recreation Room	26'8" x 27'4"	564 sq. ft	Yes
2	Laundry	6'6" x 8'9"	57 sq. ft	Yes
3	Bath	6'10" x 8'2"	56 sq. ft	Yes
4	Hall	11'4" x 8'9"	87 sq. ft	Yes
5	Storage	25'4" x 6'4"	161 sq. ft	No
6	Utility	8'11" x 13'5"	120 sq. ft	No

Home report

490 Maple Avenue, Ridgewood Junction, Glen Rock, Bergen County, New Jersey, United States, 07452



Room dimensions

Floor 2 Total sqft: 2019    Living area: 1332

#		Dimensions	sqft	Counted as living area
7	Bath	5'7" x 8'1"	42 sq. ft	Yes
8	Mud Room	5'9" x 4'3"	24 sq. ft	Yes
9	Bedroom	10'4" x 11'7"	119 sq. ft	Yes
10	4 Season Porch	27'2" x 7'2"	195 sq. ft	Yes
11	Garage	17'6" x 17'8"	309 sq. ft	No
12	Patio	5'1" x 12'5"	49 sq. ft	No
13	Dining Room	14'10" x 11'7"	167 sq. ft	Yes
14	Bedroom	10'4" x 11'8"	112 sq. ft	Yes
15	Hall	5'7" x 3'2"	18 sq. ft	Yes
16	Patio	17'1" x 21'5"	261 sq. ft	No
17	Kitchen	11'8" x 11'8"	120 sq. ft	Yes

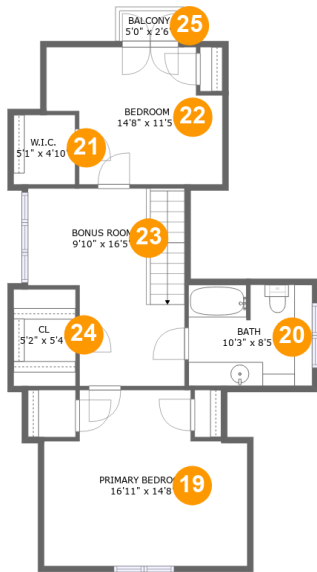
Home report

490 Maple Avenue, Ridgewood Junction, Glen Rock, Bergen  
County, New Jersey, United States, 07452

#		Dimensions	sqft	Counted as living area
18	Living Room	27'2" x 13'2"	353 sq. ft	Yes

Home report

490 Maple Avenue, Ridgewood Junction, Glen Rock, Bergen  
County, New Jersey, United States, 07452



Room dimensions

Floor 3 Total sqft: 839 Living area: 648

#		Dimensions	sqft	Counted as living area
19	Primary Bedroom	16'11" x 14'8"	171 sq. ft	Yes
20	Bath	10'3" x 8'5"	86 sq. ft	Yes
21	W.I.C.	5'1" x 4'10"	3 sq. ft	Yes
22	Bedroom	14'8" x 11'5"	132 sq. ft	Yes
23	Bonus Room	9'10" x 16'5"	171 sq. ft	Yes
24	Cl	5'2" x 5'4"	4 sq. ft	Yes
25	Balcony	5'0" x 2'6"	13 sq. ft	No

490 Maple Avenue, Ridgewood Junction, Glen Rock, Bergen  
County, New Jersey, United States, 07452

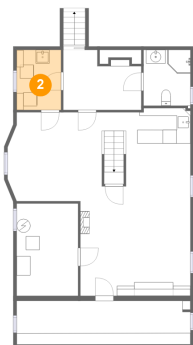
1 Floor 1 - Recreation Room



Dimensions: 26'8" x 27'4"  
Area: 564 sq. ft  
Counted as living area: Yes

Heated: Yes  
Finished: Yes  
Enclosed: Yes  
Contiguous: Yes  
Permitted: Yes  
Wet space: No  
Addition: No  
Conversion: No

2 Floor 1 - Laundry

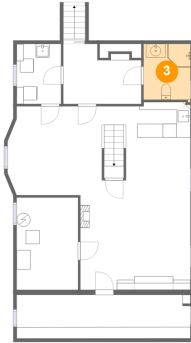


Dimensions: 6'6" x 8'9"  
Area: 57 sq. ft  
Counted as living area: Yes

Heated: Yes  
Finished: Yes  
Enclosed: Yes  
Contiguous: Yes  
Permitted: Yes  
Wet space: No  
Addition: No  
Conversion: No

490 Maple Avenue, Ridgewood Junction, Glen Rock, Bergen  
County, New Jersey, United States, 07452

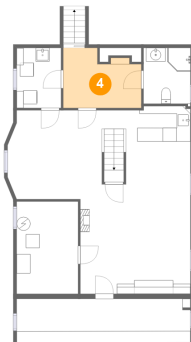
### 3 Floor 1 - Bath



Dimensions: 6'10" x 8'2"  
Area: 56 sq. ft  
Counted as living area: Yes

Heated: Yes  
Finished: Yes  
Enclosed: Yes  
Contiguous: Yes  
Permitted: Yes  
Wet space: Yes  
Addition: No  
Conversion: No

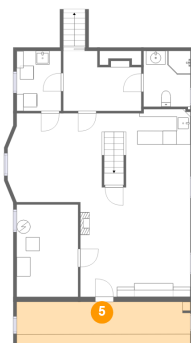
### 4 Floor 1 - Hall



Dimensions: 11'4" x 8'9"  
Area: 87 sq. ft  
Counted as living area: Yes

Heated: Yes  
Finished: Yes  
Enclosed: Yes  
Contiguous: Yes  
Permitted: Yes  
Wet space: No  
Addition: No  
Conversion: No

### 5 Floor 1 - Storage



Dimensions: 25'4" x 6'4"  
Area: 161 sq. ft  
Counted as living area: No

Heated: No  
Finished: No  
Enclosed: No  
Contiguous: Yes  
Permitted: Yes  
Wet space: No  
Addition: No  
Conversion: No

490 Maple Avenue, Ridgewood Junction, Glen Rock, Bergen County, New Jersey, United States, 07452

6 Floor 1 - Utility



Dimensions: 8'11" x 13'5"  
Area: 120 sq. ft  
Counted as living area: No

Heated: No  
Finished: No  
Enclosed: Yes  
Contiguous: Yes  
Permitted: Yes  
Wet space: No  
Addition: No  
Conversion: No

7 Floor 2 - Bath



Dimensions: 5'7" x 8'1"  
Area: 42 sq. ft  
Counted as living area: Yes

Heated: Yes  
Finished: Yes  
Enclosed: Yes  
Contiguous: Yes  
Permitted: Yes  
Wet space: Yes  
Addition: No  
Conversion: No

8 Floor 2 - Mud Room



Dimensions: 5'9" x 4'3"  
Area: 24 sq. ft  
Counted as living area: Yes

Heated: Yes  
Finished: Yes  
Enclosed: Yes  
Contiguous: Yes  
Permitted: Yes  
Wet space: No  
Addition: No  
Conversion: No



490 Maple Avenue, Ridgewood Junction, Glen Rock, Bergen  
County, New Jersey, United States, 07452

9 Floor 2 - Bedroom



Dimensions: 10'4" x 11'7"  
Area: 119 sq. ft  
Counted as living area: Yes

Heated: Yes  
Finished: Yes  
Enclosed: Yes  
Contiguous: Yes  
Permitted: Yes  
Wet space: No  
Addition: No  
Conversion: No



10 Floor 2 - 4 Season Porch



Dimensions: 27'2" x 7'2"  
Area: 195 sq. ft  
Counted as living area: Yes

Heated: Yes  
Finished: Yes  
Enclosed: Yes  
Contiguous: Yes  
Permitted: Yes  
Wet space: No  
Addition: No  
Conversion: No



11 Floor 2 - Garage



Dimensions: 17'6" x 17'8"  
Area: 309 sq. ft  
Counted as living area: No

Heated: No  
Finished: No  
Enclosed: Yes  
Contiguous: Yes  
Permitted: Yes  
Wet space: No  
Addition: No  
Conversion: No



490 Maple Avenue, Ridgewood Junction, Glen Rock, Bergen  
County, New Jersey, United States, 07452

12 Floor 2 - Patio



Dimensions: 5'1" x 12'5"  
Area: 49 sq. ft  
Counted as living area: No

Heated: No  
Finished: Yes  
Enclosed: No  
Contiguous: Yes  
Permitted: Yes  
Wet space: No  
Addition: No  
Conversion: No

13 Floor 2 - Dining Room



Dimensions: 14'10" x 11'7"  
Area: 167 sq. ft  
Counted as living area: Yes

Heated: Yes  
Finished: Yes  
Enclosed: Yes  
Contiguous: Yes  
Permitted: Yes  
Wet space: No  
Addition: No  
Conversion: No

14 Floor 2 - Bedroom



Dimensions: 10'4" x 11'8"  
Area: 112 sq. ft  
Counted as living area: Yes

Heated: Yes  
Finished: Yes  
Enclosed: Yes  
Contiguous: Yes  
Permitted: Yes  
Wet space: No  
Addition: No  
Conversion: No

490 Maple Avenue, Ridgewood Junction, Glen Rock, Bergen  
County, New Jersey, United States, 07452

15 Floor 2 - Hall



Dimensions: 5'7" x 3'2"  
Area: 18 sq. ft  
Counted as living area: Yes

Heated: Yes  
Finished: Yes  
Enclosed: Yes  
Contiguous: Yes  
Permitted: Yes  
Wet space: No  
Addition: No  
Conversion: No

16 Floor 2 - Patio



Dimensions: 17'1" x 21'5"  
Area: 261 sq. ft  
Counted as living area: No

Heated: No  
Finished: Yes  
Enclosed: No  
Contiguous: Yes  
Permitted: Yes  
Wet space: No  
Addition: No  
Conversion: No

17 Floor 2 - Kitchen



Dimensions: 11'8" x 11'8"  
Area: 120 sq. ft  
Counted as living area: Yes

Heated: Yes  
Finished: Yes  
Enclosed: Yes  
Contiguous: Yes  
Permitted: Yes  
Wet space: No  
Addition: No  
Conversion: No

490 Maple Avenue, Ridgewood Junction, Glen Rock, Bergen  
County, New Jersey, United States, 07452

### 18 Floor 2 - Living Room



Dimensions: 27'2" x 13'2"  
Area: 353 sq. ft  
Counted as living area: Yes

Heated: Yes  
Finished: Yes  
Enclosed: Yes  
Contiguous: Yes  
Permitted: Yes  
Wet space: No  
Addition: No  
Conversion: No

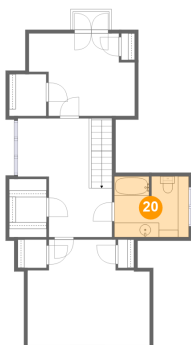
### 19 Floor 3 - Primary Bedroom



Dimensions: 16'11" x 14'8"  
Area: 171 sq. ft  
Counted as living area: Yes

Heated: Yes  
Finished: Yes  
Enclosed: Yes  
Contiguous: Yes  
Permitted: Yes  
Wet space: No  
Addition: No  
Conversion: No

### 20 Floor 3 - Bath



Dimensions: 10'3" x 8'5"  
Area: 86 sq. ft  
Counted as living area: Yes

Heated: Yes  
Finished: Yes  
Enclosed: Yes  
Contiguous: Yes  
Permitted: Yes  
Wet space: Yes  
Addition: No  
Conversion: No

490 Maple Avenue, Ridgewood Junction, Glen Rock, Bergen  
County, New Jersey, United States, 07452

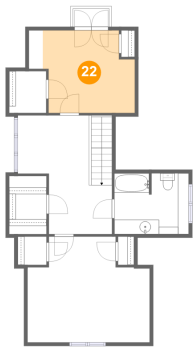
21 Floor 3 - W.I.C.



Dimensions: 5'1" x 4'10"  
Area: 3 sq. ft  
Counted as living area: Yes

Heated: Yes  
Finished: Yes  
Enclosed: Yes  
Contiguous: Yes  
Permitted: Yes  
Wet space: No  
Addition: No  
Conversion: No

22 Floor 3 - Bedroom



Dimensions: 14'8" x 11'5"  
Area: 132 sq. ft  
Counted as living area: Yes

Heated: Yes  
Finished: Yes  
Enclosed: Yes  
Contiguous: Yes  
Permitted: Yes  
Wet space: No  
Addition: No  
Conversion: No

23 Floor 3 - Bonus Room

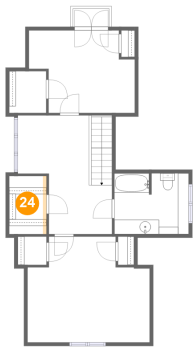


Dimensions: 9'10" x 16'5"  
Area: 171 sq. ft  
Counted as living area: Yes

Heated: Yes  
Finished: Yes  
Enclosed: Yes  
Contiguous: Yes  
Permitted: Yes  
Wet space: No  
Addition: No  
Conversion: No

490 Maple Avenue, Ridgewood Junction, Glen Rock, Bergen  
County, New Jersey, United States, 07452

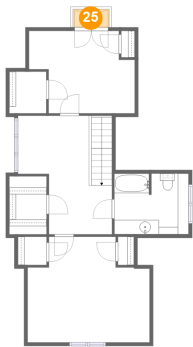
24 Floor 3 - Cl



Dimensions: 5'2" x 5'4"  
Area: 4 sq. ft  
Counted as living area: Yes

Heated: Yes  
Finished: Yes  
Enclosed: Yes  
Contiguous: Yes  
Permitted: Yes  
Wet space: No  
Addition: No  
Conversion: No

25 Floor 3 - Balcony



Dimensions: 5'0" x 2'6"  
Area: 13 sq. ft  
Counted as living area: No

Heated: No  
Finished: Yes  
Enclosed: No  
Contiguous: Yes  
Permitted: Yes  
Wet space: No  
Addition: No  
Conversion: No