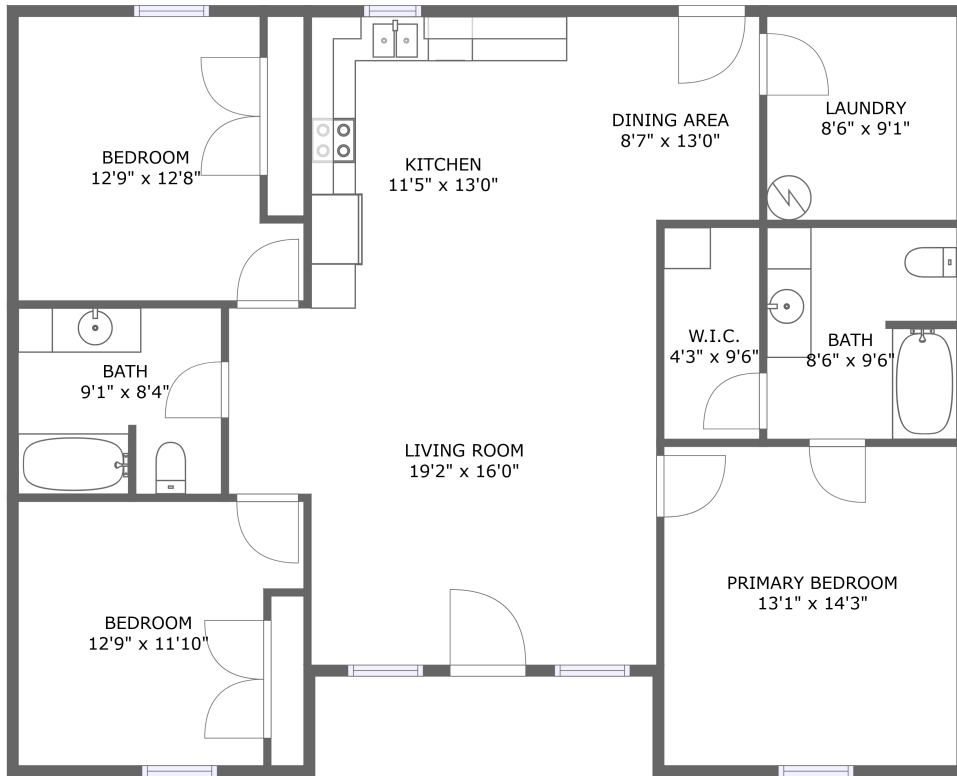


# 512 St Rose Rd, Lebanon, KY, US




FLOOR 1

## Property Summary

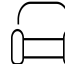
 **0** garages

 **3** bedrooms

 **2** bathrooms

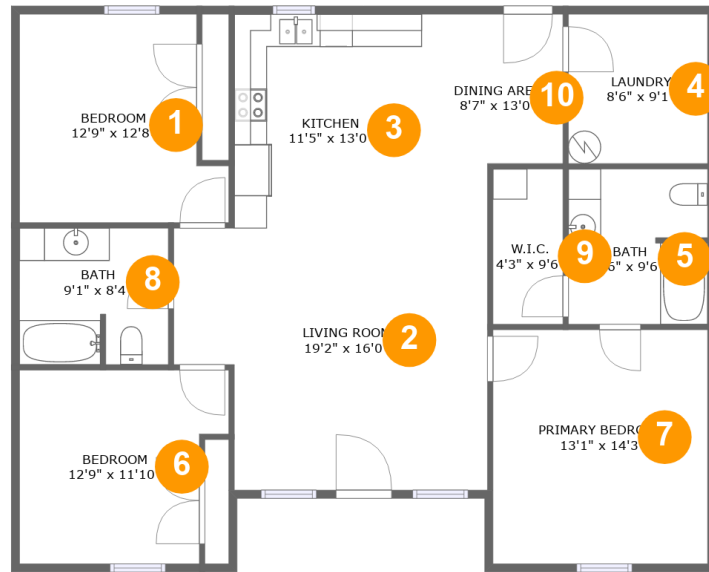
 **0** half baths

 **1** floors

 **1,414** Gross Living Area sqft

 **1,414** total sqft

# 512 St Rose Rd, Lebanon, KY, US



## Room Dimensions

Floor 1

Total sqft: 1414

Living area: 1414

#	Room name	Dimensions	Area (sqft)	Counted as Living Area
1	Bedroom	12'9" x 12'8"	144 sq. ft	Yes
2	Living Room	19'2" x 16'0"	277 sq. ft	Yes
3	Kitchen	11'5" x 13'0"	149 sq. ft	Yes
4	Laundry	8'6" x 9'1"	77 sq. ft	Yes
5	Bath	8'6" x 9'6"	79 sq. ft	Yes
6	Bedroom	12'9" x 11'10"	136 sq. ft	Yes
7	Primary Bedroom	13'1" x 14'3"	187 sq. ft	Yes
8	Bath	9'1" x 8'4"	74 sq. ft	Yes
9	W.i.c.	4'3" x 9'6"	40 sq. ft	Yes
10	Dining Area	8'7" x 13'0"	94 sq. ft	Yes

# 512 St Rose Rd, Lebanon, KY, US

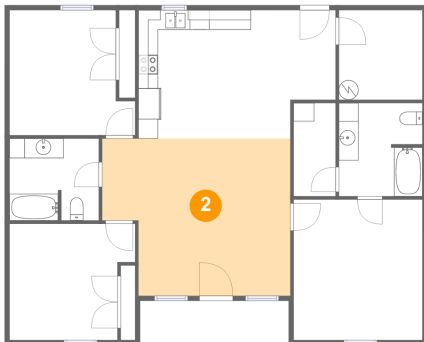
## 1 Floor 1 - Bedroom



**Dimensions:** 12'9" x 12'8"  
**Area:** 144 sq. ft  
**Counted as Living Area:**  
Yes

**Heated:** Yes  
**Finished:** Yes  
**Enclosed:** Yes  
**Contiguous:**  
Yes  
**Permitted:** Yes  
**Wet Space:** No  
**Addition:** No  
**Conversion:** No

## 2 Floor 1 - Living Room

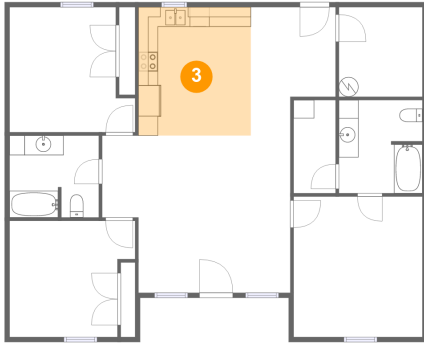


**Dimensions:** 19'2" x 16'0"  
**Area:** 277 sq. ft  
**Counted as Living Area:**  
Yes

**Heated:** Yes  
**Finished:** Yes  
**Enclosed:** Yes  
**Contiguous:**  
Yes  
**Permitted:** Yes  
**Wet Space:** No  
**Addition:** No  
**Conversion:** No

# 512 St Rose Rd, Lebanon, KY, US

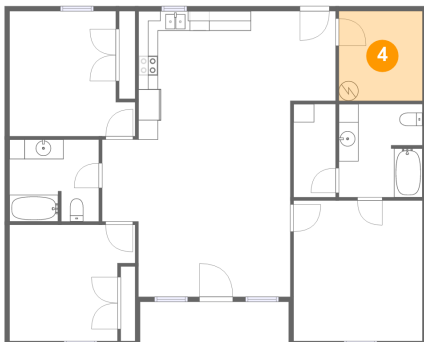
## 3 Floor 1 - Kitchen



**Dimensions:** 11'5" x 13'0"  
**Area:** 149 sq. ft  
**Counted as Living Area:**  
Yes

**Heated:** Yes  
**Finished:** Yes  
**Enclosed:** Yes  
**Contiguous:**  
Yes  
**Permitted:** Yes  
**Wet Space:** No  
**Addition:** No  
**Conversion:** No

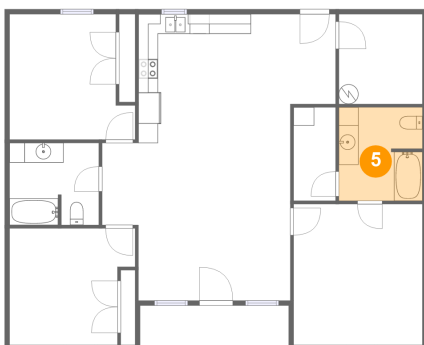
## 4 Floor 1 - Laundry



**Dimensions:** 8'6" x 9'1"  
**Area:** 77 sq. ft  
**Counted as Living Area:**  
Yes

**Heated:** Yes  
**Finished:** Yes  
**Enclosed:** Yes  
**Contiguous:**  
Yes  
**Permitted:** Yes  
**Wet Space:** No  
**Addition:** No  
**Conversion:** No

## 5 Floor 1 - Bath

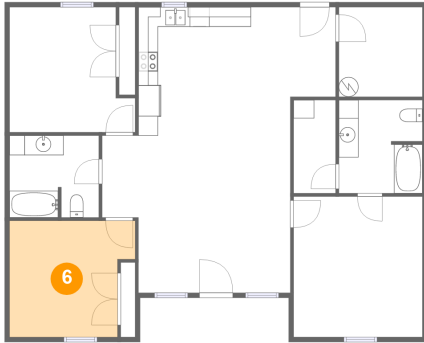


**Dimensions:** 8'6" x 9'6"  
**Area:** 79 sq. ft  
**Counted as Living Area:**  
Yes

**Heated:** Yes  
**Finished:** Yes  
**Enclosed:** Yes  
**Contiguous:**  
Yes  
**Permitted:** Yes  
**Wet Space:** Yes  
**Addition:** No  
**Conversion:** No

# 512 St Rose Rd, Lebanon, KY, US

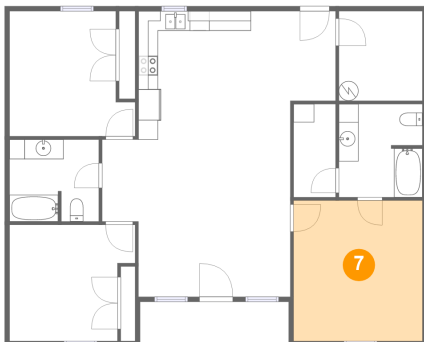
## 6 Floor 1 - Bedroom



**Dimensions:** 12'9" x 11'10"  
**Area:** 136 sq. ft  
**Counted as Living Area:**  
Yes

**Heated:** Yes  
**Finished:** Yes  
**Enclosed:** Yes  
**Contiguous:**  
Yes  
**Permitted:** Yes  
**Wet Space:** No  
**Addition:** No  
**Conversion:** No

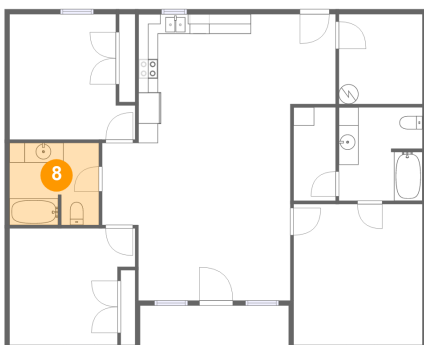
## 7 Floor 1 - Primary Bedroom



**Dimensions:** 13'1" x 14'3"  
**Area:** 187 sq. ft  
**Counted as Living Area:**  
Yes

**Heated:** Yes  
**Finished:** Yes  
**Enclosed:** Yes  
**Contiguous:**  
Yes  
**Permitted:** Yes  
**Wet Space:** No  
**Addition:** No  
**Conversion:** No

## 8 Floor 1 - Bath

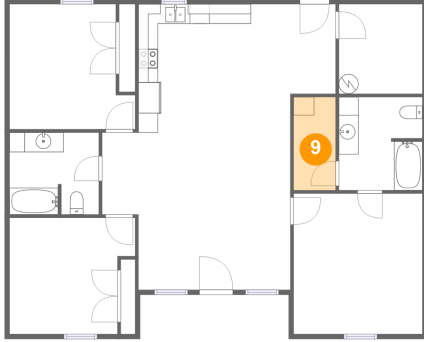


**Dimensions:** 9'1" x 8'4"  
**Area:** 74 sq. ft  
**Counted as Living Area:**  
Yes

**Heated:** Yes  
**Finished:** Yes  
**Enclosed:** Yes  
**Contiguous:**  
Yes  
**Permitted:** Yes  
**Wet Space:** Yes  
**Addition:** No  
**Conversion:** No

# 512 St Rose Rd, Lebanon, KY, US

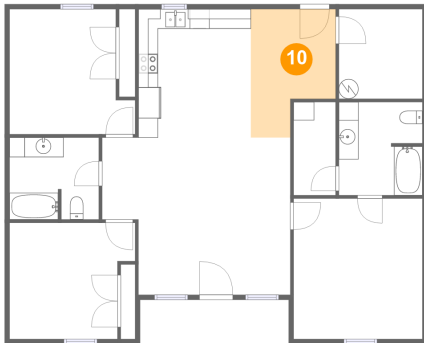
## 9 Floor 1 - W.i.c.



Dimensions: 4'3" x 9'6"  
Area: 40 sq. ft  
Counted as Living Area:  
Yes

Heated: Yes  
Finished: Yes  
Enclosed: Yes  
Contiguous:  
Yes  
Permitted: Yes  
Wet Space: No  
Addition: No  
Conversion: No

## 10 Floor 1 - Dining Area



Dimensions: 8'7" x 13'0"  
Area: 94 sq. ft  
Counted as Living Area:  
Yes

Heated: Yes  
Finished: Yes  
Enclosed: Yes  
Contiguous:  
Yes  
Permitted: Yes  
Wet Space: No  
Addition: No  
Conversion: No