



## Measurement Report

Measurement Date	January 15, 2025
Client Name	Stephen Lau - RE/MAX Real Estate
Property Address	126 Brintnell Blvd NW, Edmonton, AB
Property Type	Single Family
Exterior Wall Thickness	6.5"
Measurement Equipment	Laser

## Floor Area Totals

	Level	Metric (m <sup>2</sup> )	Imperial (ft <sup>2</sup> )
Main Floor	1	91.04	979.92
Basement	B	71.17	766.11
<b>Total Above Ground RMS Area</b>		<b>91.04</b>	<b>979.92</b>

## Room Dimensions

	Level	Metric (m)	Imperial (ft)
Living Room	1	4.13 x 4.40	13'7" x 14'5"
Dining Room	1	2.88 x 2.25	9'5" x 7'5"
Kitchen	1	3.79 x 2.67	12'5" x 8'9"
Laundry Room	B	2.42 x 1.74	7'11" x 5'9"
Primary Bedroom	1	4.34 x 3.38	14'3" x 11'1"
Bedroom 2	1	2.95 x 3.89	9'8" x 12'9"
Bedroom 3	B	2.90 x 4.12	9'6" x 13'6"
Bedroom 4	B	3.00 x 4.12	9'10" x 13'6"
Family Room	B	4.64 x 4.04	15'3" x 13'3"
Garage Door		4.80 x 2.10	15'9" x 6'11"
Garage		5.77 x 5.88	18'11" x 19'3"

## Bathroom Count

	Level	Pieces
Bathroom 1	1	4
Bathroom 2	B	4

### Measuring Process

Measurements have been completed and verified using the RMS guidelines. Measurements were obtained using lasers for the interior areas.

Room dimensions are largest length and width; parts of room may be smaller. Room area is not always equal to product of length and width.

587-566-6774

info@jcvisuals.ca

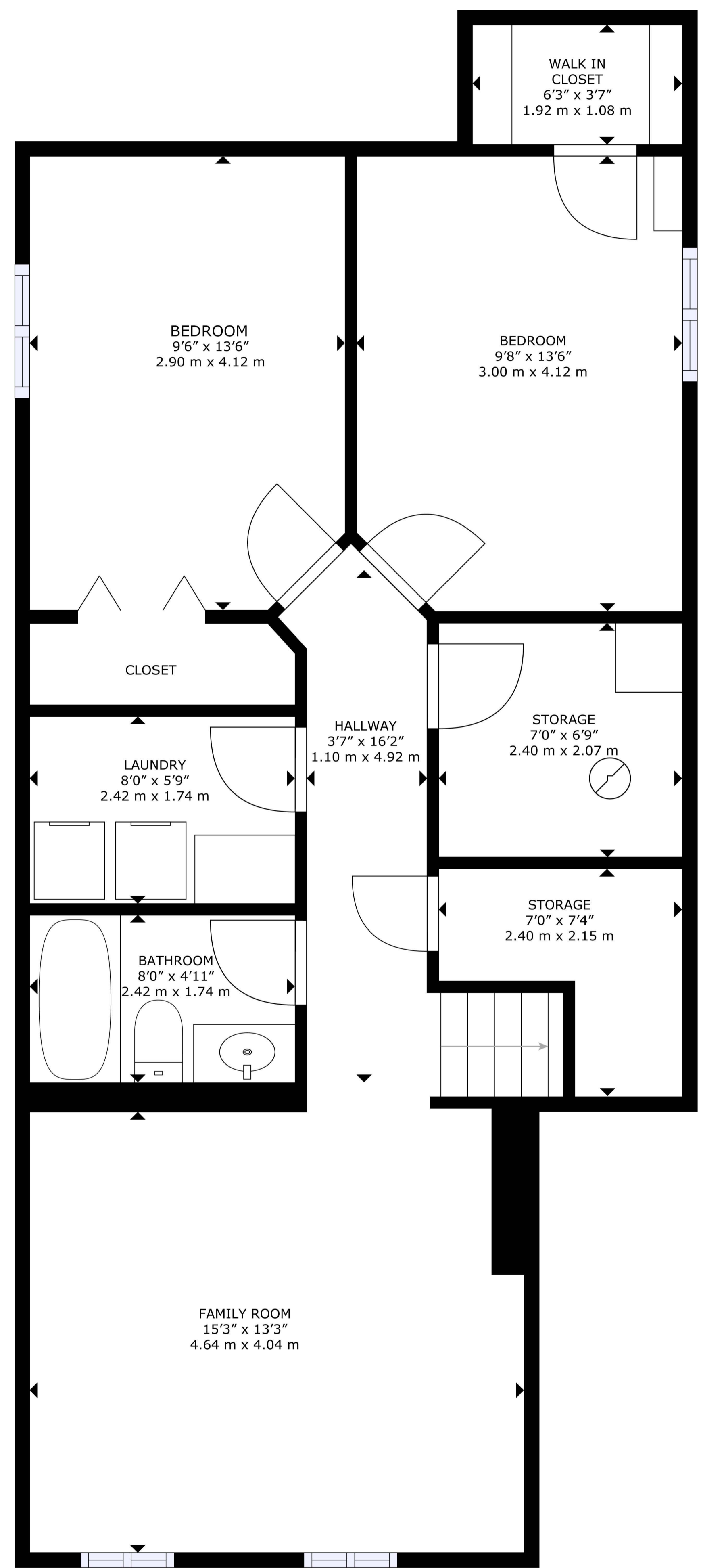
www.jcvisuals.ca

## Schematics

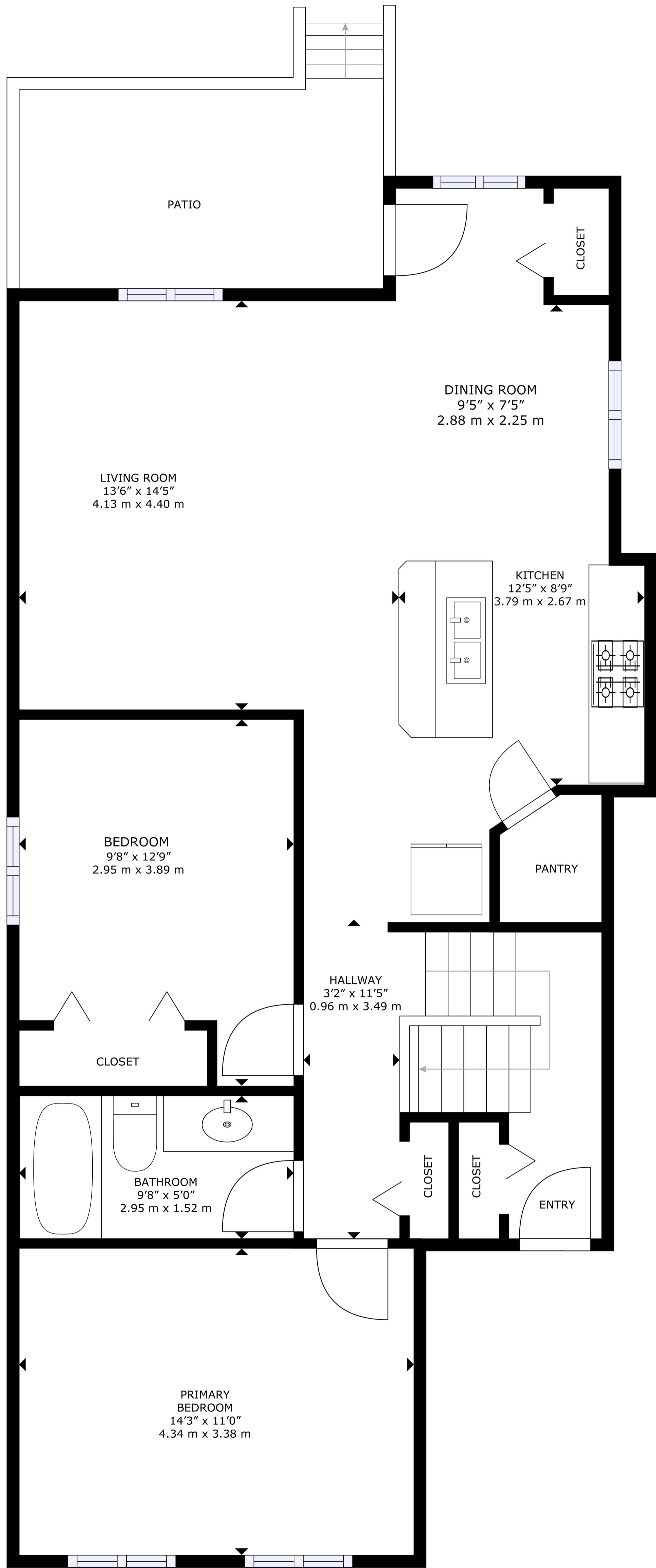


**126 BRINTNELL BLVD NW**  
**EDMONTON, AB**

EXTERIOR WALL THICKNESS: 6.5"



**BASEMENT**  
71.17 m<sup>2</sup>(766 sq ft)



**MAIN FLOOR**  
91.04 m<sup>2</sup>(980 sq ft)

The floorplans and measurements are approximate within +/- 2% and are used for advertising usage only  
May include unfinished area. Not suitable for architectural or construction use.