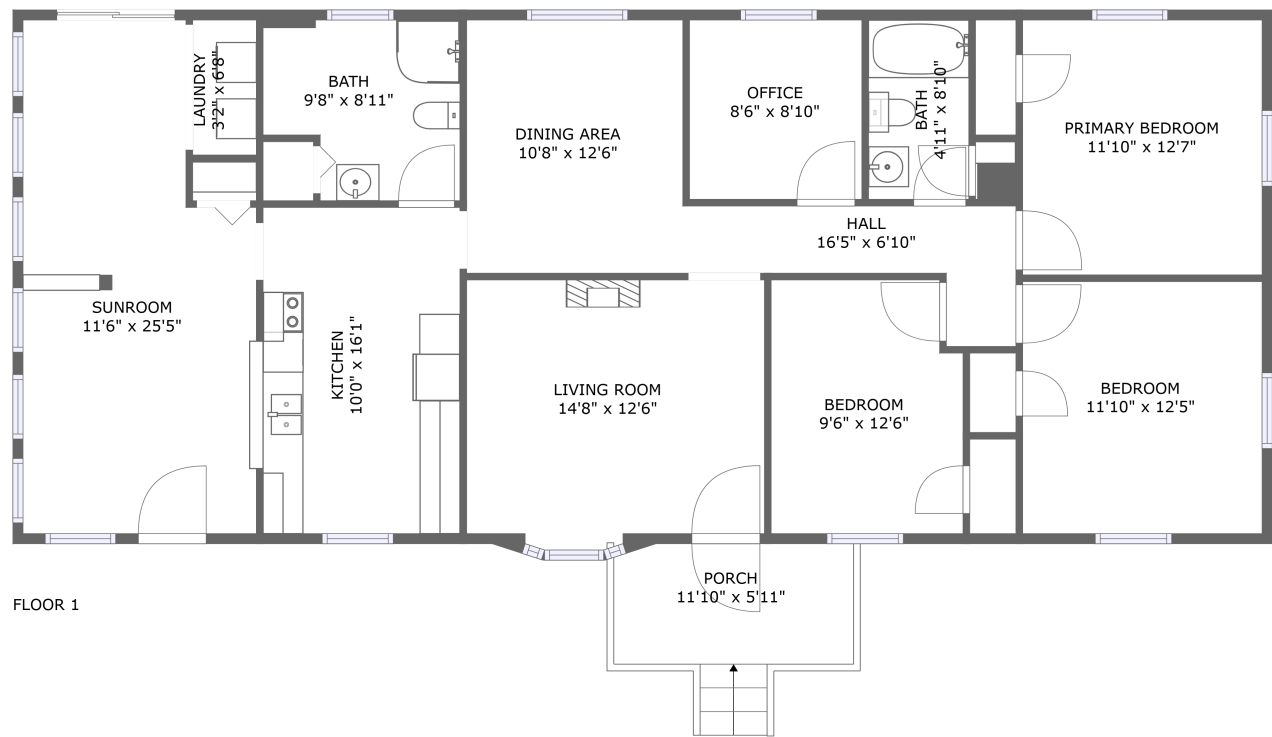


Home report

1907 Redwood Road Southeast, Riverdale, Roanoke, Roanoke city, Virginia, United States, 24014




Total Area: 1553 sq. ft

Floor 1: 1553 sq. ft

Excluded: Porch 70 sq. ft, Embedded window 5 sq. ft, Walls: 88 sq. ft

Property summary

 1 Floors

 3 Bedrooms

 2 Bathrooms

Home report

1907 Redwood Road Southeast, Riverdale, Roanoke, Roanoke city, Virginia, United States, 24014



Room dimensions

Floor 1 Total:1553sqft    Excluded: 75sqft

#		Max Dimensions	sqft	Included
1	Laundry	3'2" x 6'8"	21 sq. ft	Yes
2	Bath	4'11" x 8'10"	44 sq. ft	Yes
3	Living Room	14'8" x 12'6"	184 sq. ft	Yes
4	Bedroom	9'6" x 12'6"	115 sq. ft	Yes
5	Bath	9'8" x 8'11"	78 sq. ft	Yes
6	Porch	11'10" x 5'11"	70 sq. ft	No
7	Hall	16'5" x 6'10"	67 sq. ft	Yes
8	Primary Bedroom	11'10" x 12'7"	149 sq. ft	Yes
9	Bedroom	11'10" x 12'5"	147 sq. ft	Yes
10	Kitchen	10'0" x 16'1"	159 sq. ft	Yes
11	Dining Area	10'8" x 12'6"	134 sq. ft	Yes

Home report

1907 Redwood Road Southeast, Riverdale, Roanoke, Roanoke city, Virginia, United States, 24014

#		Max Dimensions	sqft	Included
12	Sunroom	11'6" x 25'5"	260 sq. ft	Yes
13	Office	8'6" x 8'10"	75 sq. ft	Yes

1907 Redwood Road Southeast, Riverdale, Roanoke, Roanoke city, Virginia, United States, 24014

1 Floor 1 - Laundry



Max Dimensions: 3'2" x 6'8"  
Calculated Area: 21 sq. ft  
Included: Yes

Heated: Yes  
Finished: Yes  
Enclosed: Yes  
Contiguous: Yes  
Permitted: Yes  
Wet space: No  
Addition: No  
Conversion: No

2 Floor 1 - Bath

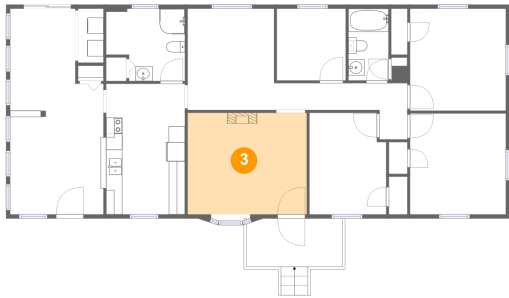


Max Dimensions: 4'11" x 8'10"  
Calculated Area: 44 sq. ft  
Included: Yes

Heated: Yes  
Finished: Yes  
Enclosed: Yes  
Contiguous: Yes  
Permitted: Yes  
Wet space: Yes  
Addition: No  
Conversion: No

1907 Redwood Road Southeast, Riverdale, Roanoke, Roanoke city, Virginia, United States, 24014

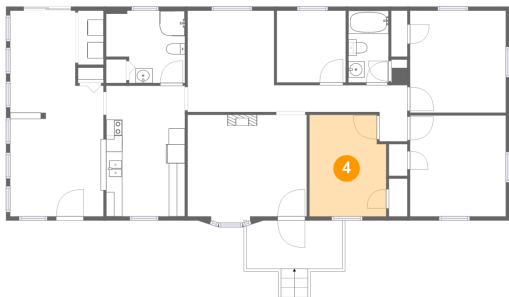
3 Floor 1 - Living Room



Max Dimensions: 14'8" x 12'6"  
Calculated Area: 184 sq. ft  
Included: Yes

Heated: Yes  
Finished: Yes  
Enclosed: Yes  
Contiguous: Yes  
Permitted: Yes  
Wet space: No  
Addition: No  
Conversion: No

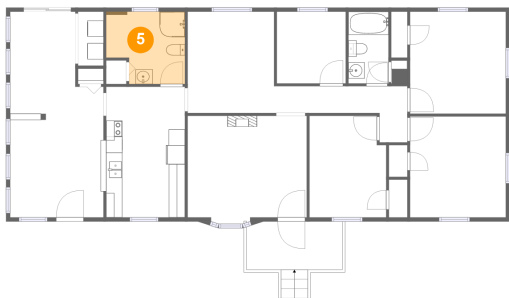
4 Floor 1 - Bedroom



Max Dimensions: 9'6" x 12'6"  
Calculated Area: 115 sq. ft  
Included: Yes

Heated: Yes  
Finished: Yes  
Enclosed: Yes  
Contiguous: Yes  
Permitted: Yes  
Wet space: No  
Addition: No  
Conversion: No

5 Floor 1 - Bath

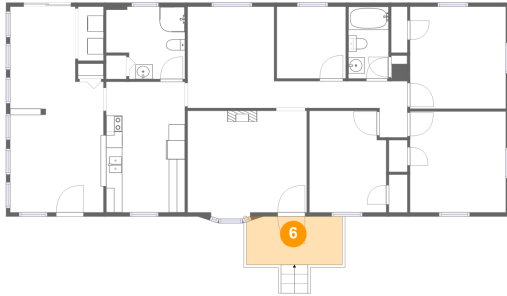


Max Dimensions: 9'8" x 8'11"  
Calculated Area: 78 sq. ft  
Included: Yes

Heated: Yes  
Finished: Yes  
Enclosed: Yes  
Contiguous: Yes  
Permitted: Yes  
Wet space: Yes  
Addition: No  
Conversion: No

1907 Redwood Road Southeast, Riverdale, Roanoke, Roanoke city, Virginia, United States, 24014

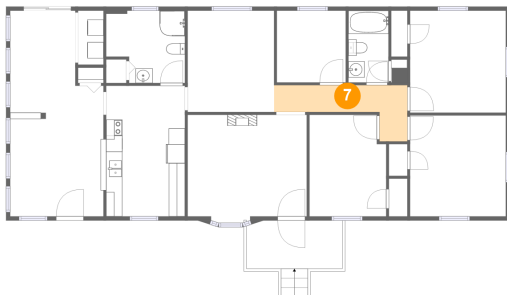
## 6 Floor 1 - Porch



Max Dimensions: 11'10" x 5'11"  
Calculated Area: 70 sq. ft  
Included: No

Heated: No  
Finished: Yes  
Enclosed: No  
Contiguous: Yes  
Permitted: Yes  
Wet space: No  
Addition: No  
Conversion: No

## 7 Floor 1 - Hall



Max Dimensions: 16'5" x 6'10"  
Calculated Area: 67 sq. ft  
Included: Yes

Heated: Yes  
Finished: Yes  
Enclosed: Yes  
Contiguous: Yes  
Permitted: Yes  
Wet space: No  
Addition: No  
Conversion: No

## 8 Floor 1 - Primary Bedroom

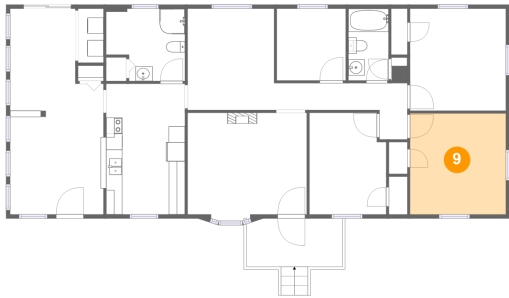


Max Dimensions: 11'10" x 12'7"  
Calculated Area: 149 sq. ft  
Included: Yes

Heated: Yes  
Finished: Yes  
Enclosed: Yes  
Contiguous: Yes  
Permitted: Yes  
Wet space: No  
Addition: No  
Conversion: No

1907 Redwood Road Southeast, Riverdale, Roanoke, Roanoke city, Virginia, United States, 24014

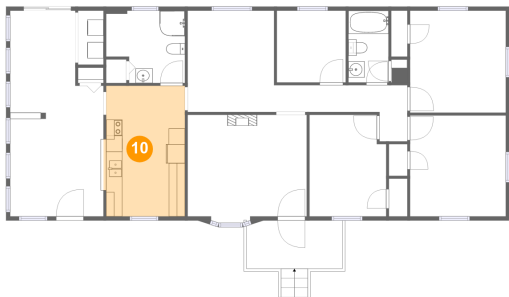
9 Floor 1 - Bedroom



Max Dimensions: 11'10" x 12'5"  
Calculated Area: 147 sq. ft  
Included: Yes

Heated: Yes  
Finished: Yes  
Enclosed: Yes  
Contiguous: Yes  
Permitted: Yes  
Wet space: No  
Addition: No  
Conversion: No

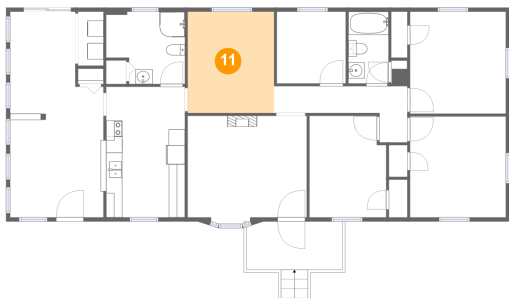
10 Floor 1 - Kitchen



Max Dimensions: 10'0" x 16'1"  
Calculated Area: 159 sq. ft  
Included: Yes

Heated: Yes  
Finished: Yes  
Enclosed: Yes  
Contiguous: Yes  
Permitted: Yes  
Wet space: No  
Addition: No  
Conversion: No

11 Floor 1 - Dining Area

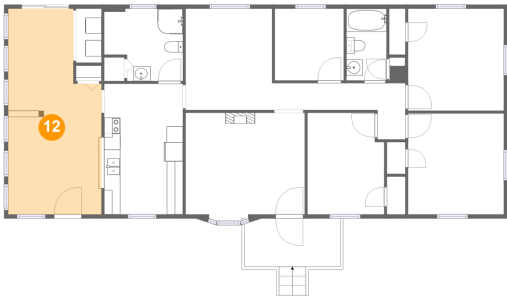


Max Dimensions: 10'8" x 12'6"  
Calculated Area: 134 sq. ft  
Included: Yes

Heated: Yes  
Finished: Yes  
Enclosed: Yes  
Contiguous: Yes  
Permitted: Yes  
Wet space: No  
Addition: No  
Conversion: No

1907 Redwood Road Southeast, Riverdale, Roanoke, Roanoke city, Virginia, United States, 24014

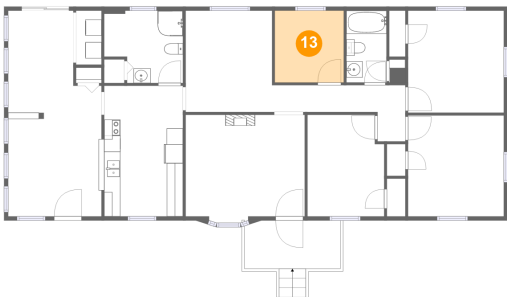
12 Floor 1 - Sunroom



Max Dimensions: 11'6" x 25'5"  
Calculated Area: 260 sq. ft  
Included: Yes

Heated: Yes  
Finished: Yes  
Enclosed: Yes  
Contiguous: Yes  
Permitted: Yes  
Wet space: No  
Addition: No  
Conversion: No

13 Floor 1 - Office



Max Dimensions: 8'6" x 8'10"  
Calculated Area: 75 sq. ft  
Included: Yes

Heated: Yes  
Finished: Yes  
Enclosed: Yes  
Contiguous: Yes  
Permitted: Yes  
Wet space: No  
Addition: No  
Conversion: No