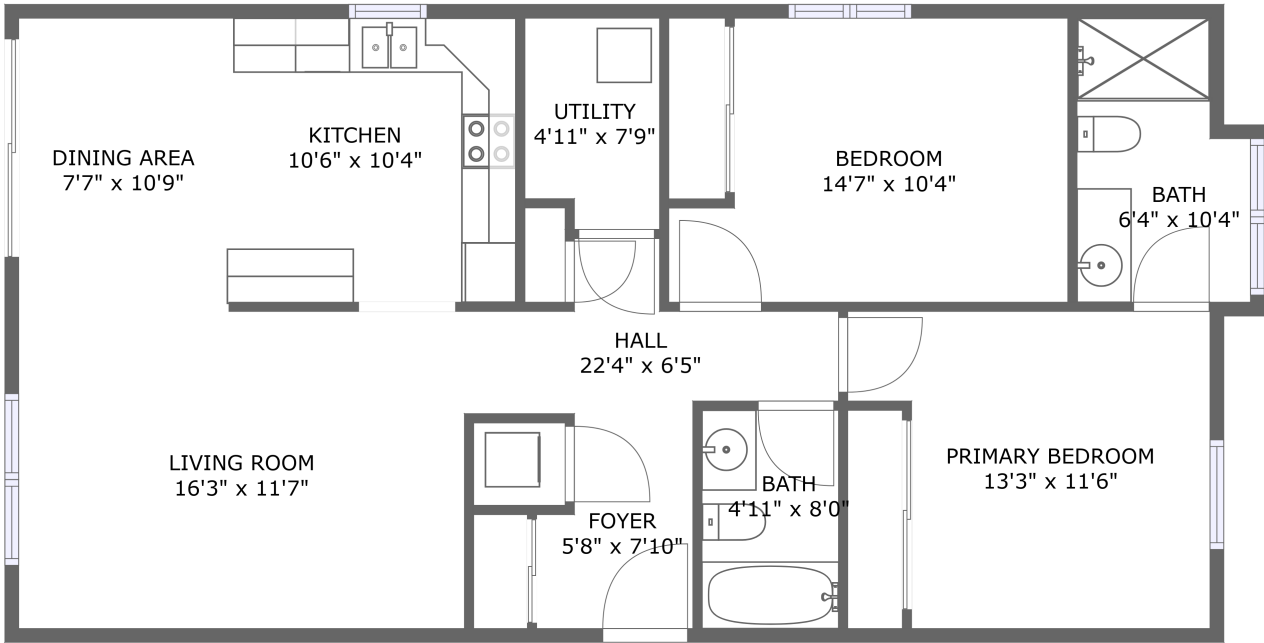


Home report

340 Tribeca Private, Stonebridge, Nepean, Ontario, Canada, K2J 6B4



FLOOR 1


Total Area: 977 sq. ft

Floor 1: 977 sq. ft

Excluded: Walls: 0 sq. ft

Property summary

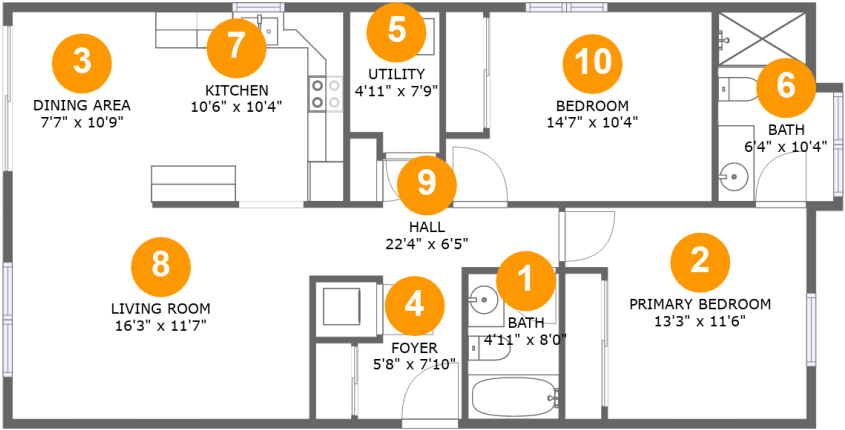
 1 Floors

 2 Bedrooms

 2 Bathrooms

Home report

340 Tribeca Private, Stonebridge, Nepean, Ontario, Canada, K2J 6B4



Room dimensions

Floor 1

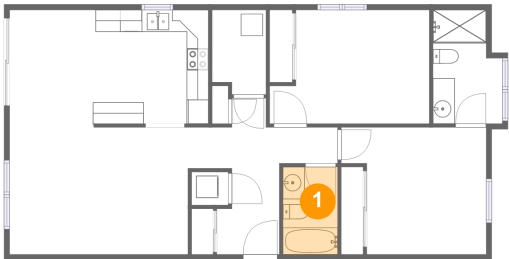
Total:977sqft

Excluded: 0sqft

#		Max Dimensions	sqft	Included
1	Bath	4'11" x 8'0"	40 sq. ft	Yes
2	Primary Bedroom	13'3" x 11'6"	134 sq. ft	Yes
3	Dining Area	7'7" x 10'9"	82 sq. ft	Yes
4	Foyer	5'8" x 7'10"	40 sq. ft	Yes
5	Utility	4'11" x 7'9"	36 sq. ft	Yes
6	Bath	6'4" x 10'4"	59 sq. ft	Yes
7	Kitchen	10'6" x 10'4"	109 sq. ft	Yes
8	Living Room	16'3" x 11'7"	188 sq. ft	Yes
9	Hall	22'4" x 6'5"	57 sq. ft	Yes
10	Bedroom	14'7" x 10'4"	134 sq. ft	Yes

340 Tribeca Private, Stonebridge, Nepean, Ontario, Canada, K2J 6B4

1 Floor 1 - Bath



Max Dimensions: 4'11" x 8'0"
Calculated Area: 40 sq. ft
Included: Yes

Heated: Yes
Finished: Yes
Enclosed: Yes
Contiguous: Yes
Permitted: Yes
Wet space: Yes
Addition: No
Conversion: No

2 Floor 1 - Primary Bedroom



Max Dimensions: 13'3" x 11'6"
Calculated Area: 134 sq. ft
Included: Yes

Heated: Yes
Finished: Yes
Enclosed: Yes
Contiguous: Yes
Permitted: Yes
Wet space: No
Addition: No
Conversion: No

340 Tribeca Private, Stonebridge, Nepean, Ontario, Canada, K2J 6B4

3 Floor 1 - Dining Area



Max Dimensions: 7'7" x 10'9"
Calculated Area: 82 sq. ft
Included: Yes

Heated: Yes
Finished: Yes
Enclosed: Yes
Contiguous: Yes
Permitted: Yes
Wet space: No
Addition: No
Conversion: No

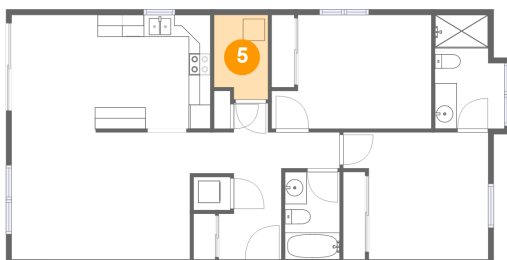
4 Floor 1 - Foyer



Max Dimensions: 5'8" x 7'10"
Calculated Area: 40 sq. ft
Included: Yes

Heated: Yes
Finished: Yes
Enclosed: Yes
Contiguous: Yes
Permitted: Yes
Wet space: No
Addition: No
Conversion: No

5 Floor 1 - Utility



Max Dimensions: 4'11" x 7'9"
Calculated Area: 36 sq. ft
Included: Yes

Heated: Yes
Finished: Yes
Enclosed: Yes
Contiguous: Yes
Permitted: Yes
Wet space: No
Addition: No
Conversion: No

340 Tribeca Private, Stonebridge, Nepean, Ontario, Canada, K2J 6B4

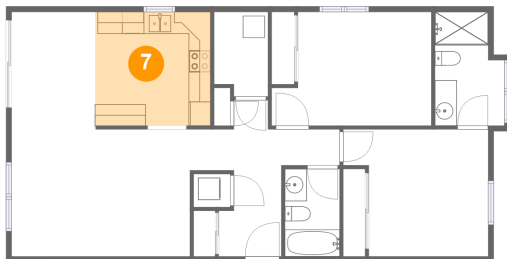
6 Floor 1 - Bath



Max Dimensions: 6'4" x 10'4"
Calculated Area: 59 sq. ft
Included: Yes

Heated: Yes
Finished: Yes
Enclosed: Yes
Contiguous: Yes
Permitted: Yes
Wet space: Yes
Addition: No
Conversion: No

7 Floor 1 - Kitchen



Max Dimensions: 10'6" x 10'4"
Calculated Area: 109 sq. ft
Included: Yes

Heated: Yes
Finished: Yes
Enclosed: Yes
Contiguous: Yes
Permitted: Yes
Wet space: No
Addition: No
Conversion: No

8 Floor 1 - Living Room

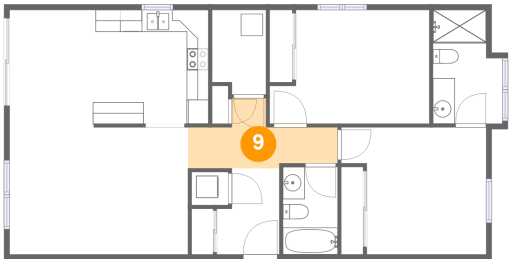


Max Dimensions: 16'3" x 11'7"
Calculated Area: 188 sq. ft
Included: Yes

Heated: Yes
Finished: Yes
Enclosed: Yes
Contiguous: Yes
Permitted: Yes
Wet space: No
Addition: No
Conversion: No

340 Tribeca Private, Stonebridge, Nepean, Ontario, Canada, K2J 6B4

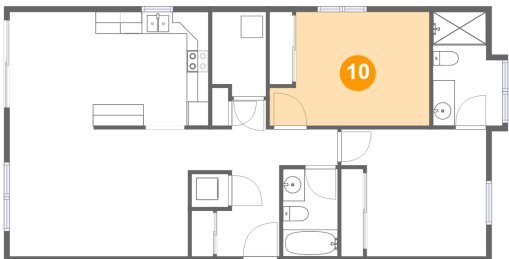
9 Floor 1 - Hall



Max Dimensions: 22'4" x 6'5"
Calculated Area: 57 sq. ft
Included: Yes

Heated: Yes
Finished: Yes
Enclosed: Yes
Contiguous: Yes
Permitted: Yes
Wet space: No
Addition: No
Conversion: No

10 Floor 1 - Bedroom



Max Dimensions: 14'7" x 10'4"
Calculated Area: 134 sq. ft
Included: Yes

Heated: Yes
Finished: Yes
Enclosed: Yes
Contiguous: Yes
Permitted: Yes
Wet space: No
Addition: No
Conversion: No