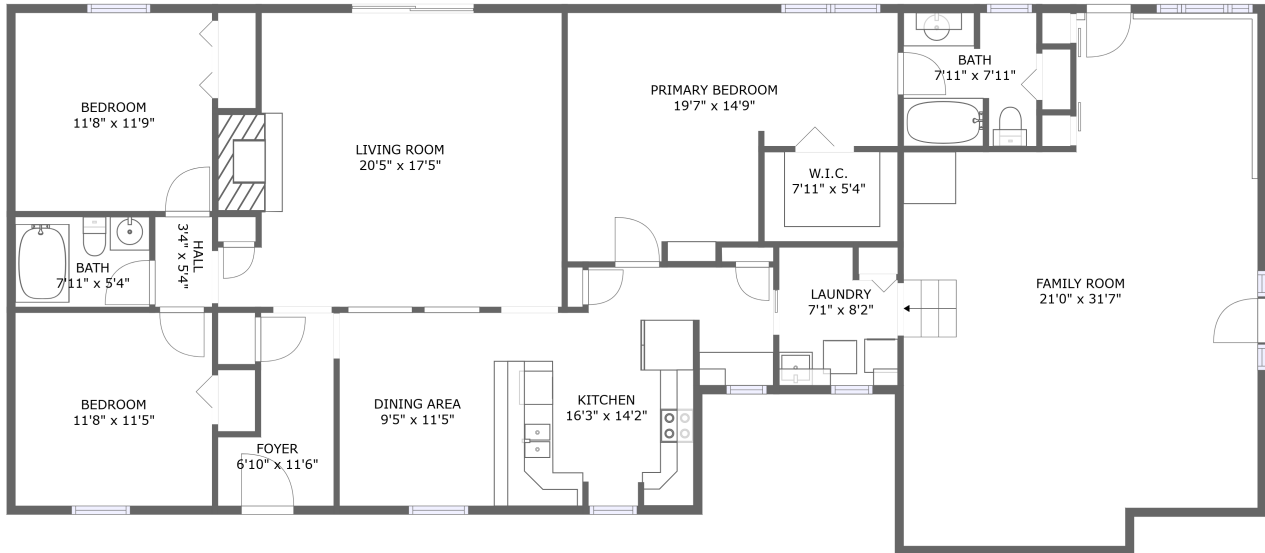


2766 Gurley Pike, Gurley, Madison County, Alabama, United States, 35748




FLOOR 1

Property Summary

 **0** garages

 **3** bedrooms

 **2** bathrooms

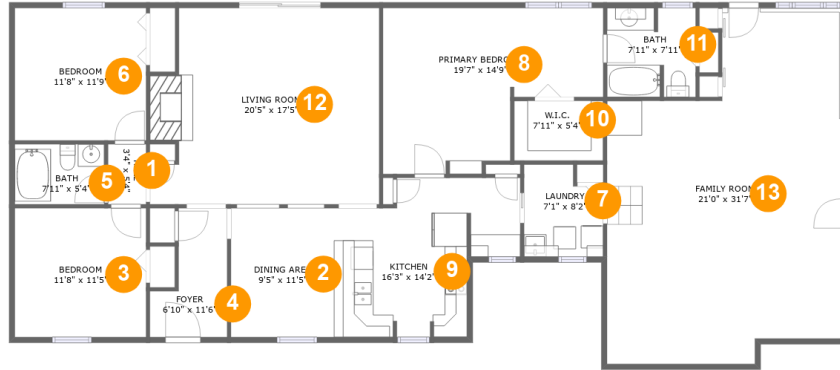
 **0** half baths

 **1** floors

 **2,210** Gross Living Area sqft

 **2,210** total sqft

2766 Gurley Pike, Gurley, Madison County, Alabama, United States, 35748



Room Dimensions

Floor 1

Total sqft: 2210

Living area: 2210

#	Room name	Dimensions	Area (sqft)	Counted as Living Area
1	Hall	3'4" x 5'4"	18 sq. ft	Yes
2	Dining Area	9'5" x 11'5"	111 sq. ft	Yes
3	Bedroom	11'8" x 11'5"	134 sq. ft	Yes
4	Foyer	6'10" x 11'6"	60 sq. ft	Yes
5	Bath	7'11" x 5'4"	42 sq. ft	Yes
6	Bedroom	11'8" x 11'9"	137 sq. ft	Yes
7	Laundry	7'1" x 8'2"	53 sq. ft	Yes
8	Primary Bedroom	19'7" x 14'9"	229 sq. ft	Yes
9	Kitchen	16'3" x 14'2"	181 sq. ft	Yes
10	W.i.c.	7'11" x 5'4"	42 sq. ft	Yes
11	Bath	7'11" x 7'11"	61 sq. ft	Yes

Scan captured on Wed, 14 Aug 2024 22:48:14 GMT

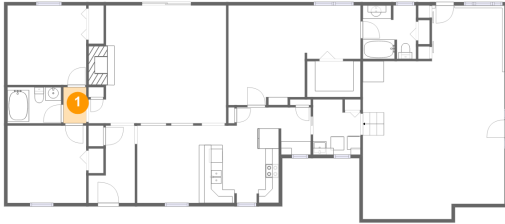
Information is calculated by CubiCasa technology; deemed highly reliable but not guaranteed.

**2766 Gurley Pike, Gurley, Madison County,
Alabama, United States, 35748**

#	Room name	Dimensions	Area (sqft)	Counted as Living Area
12	Living Room	20'5" x 17'5"	335 sq. ft	Yes
13	Family Room	21'0" x 31'7"	562 sq. ft	Yes

2766 Gurley Pike, Gurley, Madison County, Alabama, United States, 35748

1 Floor 1 - Hall



Dimensions: 3'4" x 5'4"
Area: 18 sq. ft
Counted as Living Area:
Yes

Heated: Yes
Finished: Yes
Enclosed: Yes
Contiguous:
Yes
Permitted: Yes
Wet Space: No
Addition: No
Conversion: No

2 Floor 1 - Dining Area



Dimensions: 9'5" x 11'5"
Area: 111 sq. ft
Counted as Living Area:
Yes

Heated: Yes
Finished: Yes
Enclosed: Yes
Contiguous:
Yes
Permitted: Yes
Wet Space: No
Addition: No
Conversion: No

2766 Gurley Pike, Gurley, Madison County, Alabama, United States, 35748

3 Floor 1 - Bedroom



Dimensions: 11'8" x 11'5"
Area: 134 sq. ft
Counted as Living Area:
Yes

Heated: Yes
Finished: Yes
Enclosed: Yes
Contiguous:
Yes
Permitted: Yes
Wet Space: No
Addition: No
Conversion: No

4 Floor 1 - Foyer



Dimensions: 6'10" x 11'6"
Area: 60 sq. ft
Counted as Living Area:
Yes

Heated: Yes
Finished: Yes
Enclosed: Yes
Contiguous:
Yes
Permitted: Yes
Wet Space: No
Addition: No
Conversion: No

5 Floor 1 - Bath



Dimensions: 7'11" x 5'4"
Area: 42 sq. ft
Counted as Living Area:
Yes

Heated: Yes
Finished: Yes
Enclosed: Yes
Contiguous:
Yes
Permitted: Yes
Wet Space: Yes
Addition: No
Conversion: No

**2766 Gurley Pike, Gurley, Madison County,
Alabama, United States, 35748**

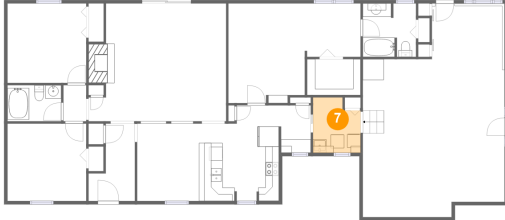
6 Floor 1 - Bedroom



Dimensions: 11'8" x 11'9"
Area: 137 sq. ft
Counted as Living Area:
Yes

Heated: Yes
Finished: Yes
Enclosed: Yes
Contiguous:
Yes
Permitted: Yes
Wet Space: No
Addition: No
Conversion: No

7 Floor 1 - Laundry



Dimensions: 7'1" x 8'2"
Area: 53 sq. ft
Counted as Living Area:
Yes

Heated: Yes
Finished: Yes
Enclosed: Yes
Contiguous:
Yes
Permitted: Yes
Wet Space: No
Addition: No
Conversion: No

8 Floor 1 - Primary Bedroom

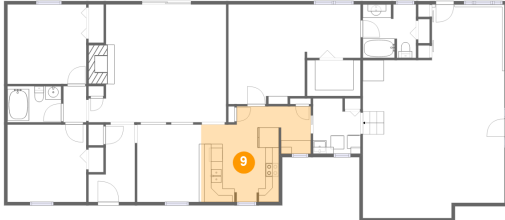


Dimensions: 19'7" x 14'9"
Area: 229 sq. ft
Counted as Living Area:
Yes

Heated: Yes
Finished: Yes
Enclosed: Yes
Contiguous:
Yes
Permitted: Yes
Wet Space: No
Addition: No
Conversion: No

2766 Gurley Pike, Gurley, Madison County, Alabama, United States, 35748

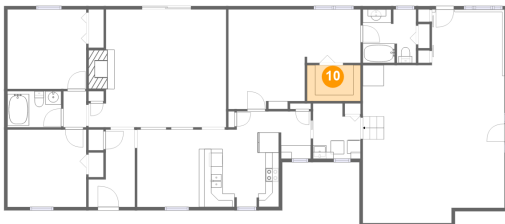
9 Floor 1 - Kitchen



Dimensions: 16'3" x 14'2"
Area: 181 sq. ft
Counted as Living Area:
Yes

Heated: Yes
Finished: Yes
Enclosed: Yes
Contiguous:
Yes
Permitted: Yes
Wet Space: No
Addition: No
Conversion: No

10 Floor 1 - W.i.c.



Dimensions: 7'11" x 5'4"
Area: 42 sq. ft
Counted as Living Area:
Yes

Heated: Yes
Finished: Yes
Enclosed: Yes
Contiguous:
Yes
Permitted: Yes
Wet Space: No
Addition: No
Conversion: No

11 Floor 1 - Bath

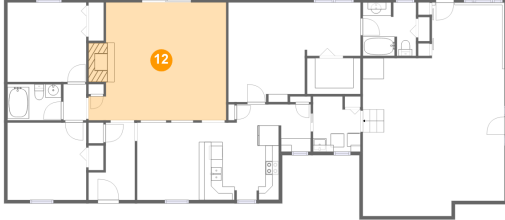


Dimensions: 7'11" x 7'11"
Area: 61 sq. ft
Counted as Living Area:
Yes

Heated: Yes
Finished: Yes
Enclosed: Yes
Contiguous:
Yes
Permitted: Yes
Wet Space: Yes
Addition: No
Conversion: No

2766 Gurley Pike, Gurley, Madison County, Alabama, United States, 35748

12 Floor 1 - Living Room



Dimensions: 20'5" x 17'5"
Area: 335 sq. ft
Counted as Living Area:
Yes

Heated: Yes
Finished: Yes
Enclosed: Yes
Contiguous:
Yes
Permitted: Yes
Wet Space: No
Addition: No
Conversion: No

13 Floor 1 - Family Room



Dimensions: 21'0" x 31'7"
Area: 562 sq. ft
Counted as Living Area:
Yes

Heated: Yes
Finished: Yes
Enclosed: Yes
Contiguous:
Yes
Permitted: Yes
Wet Space: No
Addition: No
Conversion: No