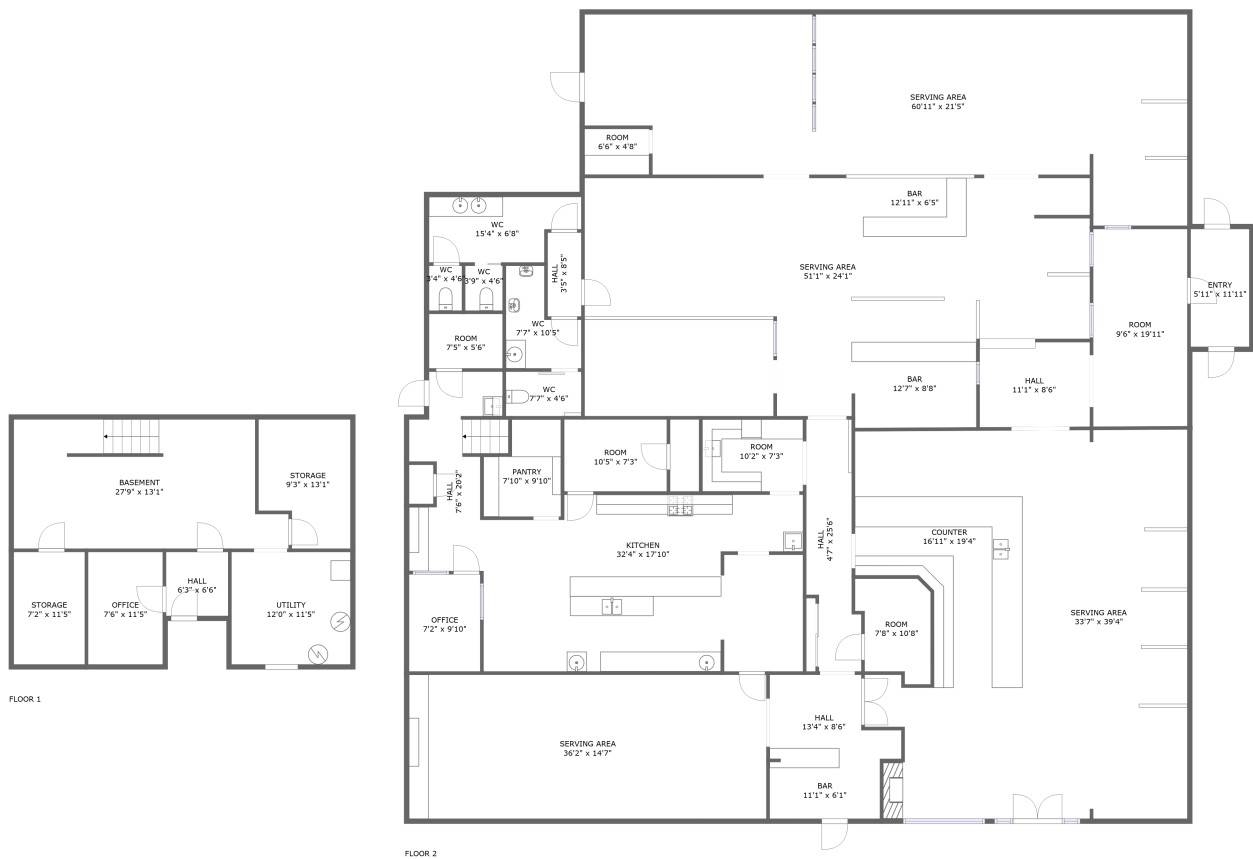



Home report


200 Addison Ave W,Twin Falls,ID,US



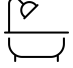
Property summary




**0** Garages



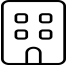
**0** Bedrooms




**0** Bathrooms




**2** Half baths



**2** Floors



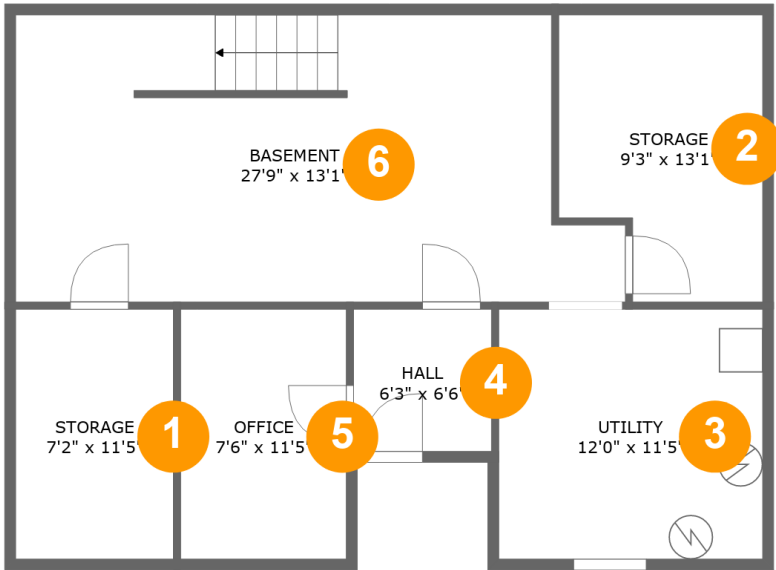
**6,034** Gross living area sqft



**6,908** Total sqft

Home report

200 Addison Ave W,Twin Falls,ID,US



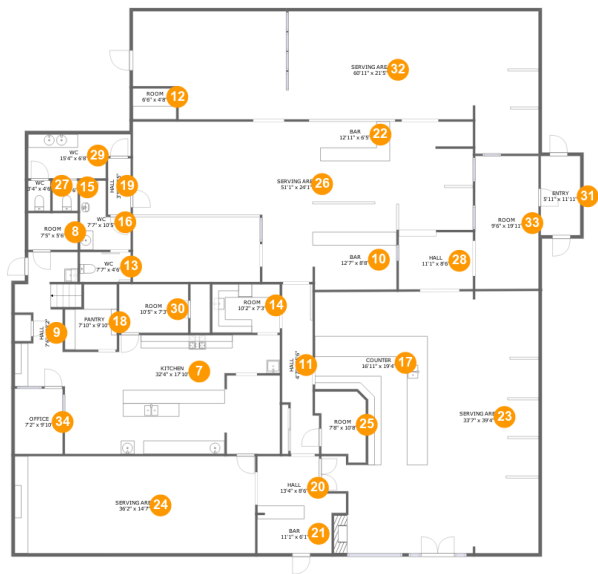
Room dimensions

Floor 1 Total sqft: 874    Living area: 0

#		Dimensions	sqft	Counted as living area
1	Storage	7'2" x 11'5"	82 sq. ft	No
2	Storage	9'3" x 13'1"	109 sq. ft	No
3	Utility	12'0" x 11'5"	137 sq. ft	No
4	Hall	6'3" x 6'6"	41 sq. ft	No
5	Office	7'6" x 11'5"	86 sq. ft	No
6	Basement	27'9" x 13'1"	331 sq. ft	No

Home report

200 Addison Ave W,Twin Falls,ID,US



Room dimensions

Floor 2 Total sqft: 6034    Living area: 6034

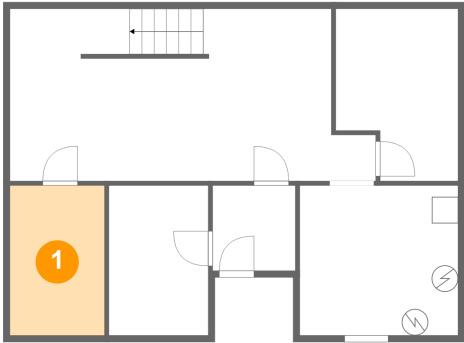
#		Dimensions	sqft	Counted as living area
7	Kitchen	32'4" x 17'10"	552 sq. ft	Yes
8	Room	7'5" x 5'6"	41 sq. ft	Yes
9	Hall	7'6" x 20'2"	143 sq. ft	Yes
10	Bar	12'7" x 8'8"	108 sq. ft	Yes
11	Hall	4'7" x 25'6"	113 sq. ft	Yes
12	Room	6'6" x 4'8"	30 sq. ft	Yes
13	WC	7'7" x 4'6"	34 sq. ft	Yes
14	Room	10'2" x 7'3"	74 sq. ft	Yes
15	WC	3'9" x 4'6"	17 sq. ft	Yes
16	WC	7'7" x 10'5"	59 sq. ft	Yes
17	Counter	16'11" x 19'4"	237 sq. ft	No

## Home report

200 Addison Ave W,Twin Falls,ID,US

#		Dimensions	sqft	Counted as living area
18	Pantry	7'10" x 9'10"	66 sq. ft	Yes
19	Hall	3'5" x 8'5"	29 sq. ft	Yes
20	Hall	13'4" x 8'6"	91 sq. ft	Yes
21	Bar	11'1" x 6'1"	67 sq. ft	Yes
22	Bar	12'11" x 6'5"	82 sq. ft	Yes
23	Serving Area	33'7" x 39'4"	959 sq. ft	Yes
24	Serving Area	36'2" x 14'7"	526 sq. ft	Yes
25	Room	7'8" x 10'8"	68 sq. ft	Yes
26	Serving Area	51'1" x 24'1"	959 sq. ft	Yes
27	WC	3'4" x 4'6"	15 sq. ft	Yes
28	Hall	11'1" x 8'6"	98 sq. ft	Yes
29	WC	15'4" x 6'8"	90 sq. ft	Yes
30	Room	10'5" x 7'3"	76 sq. ft	Yes
31	Entry	5'11" x 11'11"	71 sq. ft	Yes
32	Serving Area	60'11" x 21'5"	1003 sq. ft	Yes
33	Room	9'6" x 19'11"	190 sq. ft	Yes
34	Office	7'2" x 9'10"	71 sq. ft	Yes

1 Floor 1 - Storage



Dimensions: 7'2" x 11'5"  
Area: 82 sq. ft  
Counted as living area: No

Heated: No  
Finished: No  
Enclosed: No  
Contiguous: Yes  
Permitted: Yes  
Wet space: No  
Addition: No  
Conversion: No

2 Floor 1 - Storage



Dimensions: 9'3" x 13'1"  
Area: 109 sq. ft  
Counted as living area: No

Heated: No  
Finished: No  
Enclosed: No  
Contiguous: Yes  
Permitted: Yes  
Wet space: No  
Addition: No  
Conversion: No

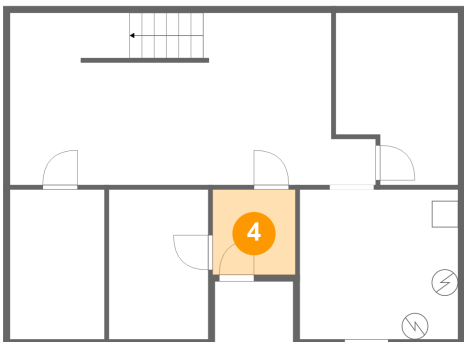
3 Floor 1 - Utility



Dimensions: 12'0" x 11'5"  
Area: 137 sq. ft  
Counted as living area: No

Heated: Yes  
Finished: No  
Enclosed: Yes  
Contiguous: Yes  
Permitted: Yes  
Wet space: No  
Addition: No  
Conversion: No

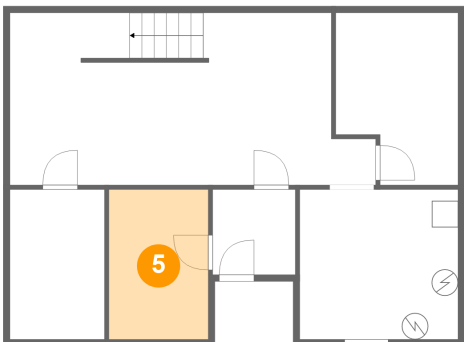
4 Floor 1 - Hall



Dimensions: 6'3" x 6'6"  
Area: 41 sq. ft  
Counted as living area: No

Heated: Yes  
Finished: No  
Enclosed: Yes  
Contiguous: Yes  
Permitted: Yes  
Wet space: No  
Addition: No  
Conversion: No

5 Floor 1 - Office



Dimensions: 7'6" x 11'5"  
Area: 86 sq. ft  
Counted as living area: No

Heated: Yes  
Finished: Yes  
Enclosed: Yes  
Contiguous: No  
Permitted: Yes  
Wet space: No  
Addition: No  
Conversion: No

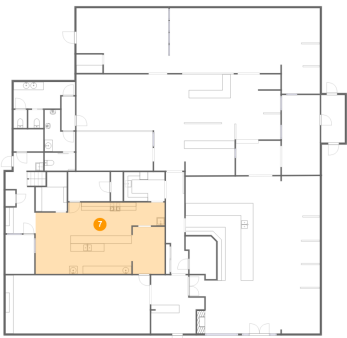
6 Floor 1 - Basement



Dimensions: 27'9" x 13'1"  
Area: 331 sq. ft  
Counted as living area: No

Heated: Yes  
Finished: No  
Enclosed: Yes  
Contiguous: Yes  
Permitted: Yes  
Wet space: No  
Addition: No  
Conversion: No

7 Floor 2 - Kitchen



Dimensions: 32'4" x 17'10"  
Area: 552 sq. ft  
Counted as living area: Yes

Heated: Yes  
Finished: Yes  
Enclosed: Yes  
Contiguous: Yes  
Permitted: Yes  
Wet space: No  
Addition: No  
Conversion: No

8 Floor 2 - Room



Dimensions: 7'5" x 5'6"  
Area: 41 sq. ft  
Counted as living area: Yes

Heated: Yes  
Finished: Yes  
Enclosed: Yes  
Contiguous: Yes  
Permitted: Yes  
Wet space: No  
Addition: No  
Conversion: No

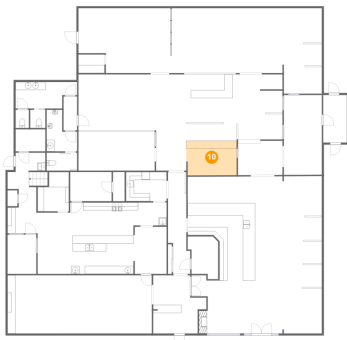
## 9 Floor 2 - Hall



Dimensions: 7'6" x 20'2"  
Area: 143 sq. ft  
Counted as living area: Yes

Heated: Yes  
Finished: Yes  
Enclosed: Yes  
Contiguous: Yes  
Permitted: Yes  
Wet space: No  
Addition: No  
Conversion: No

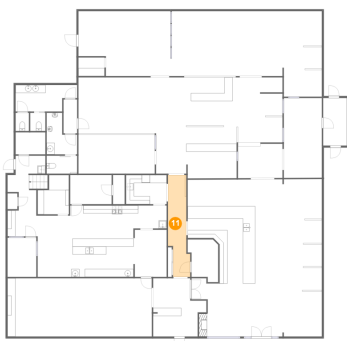
## 10 Floor 2 - Bar



Dimensions: 12'7" x 8'8"  
Area: 108 sq. ft  
Counted as living area: Yes

Heated: Yes  
Finished: Yes  
Enclosed: Yes  
Contiguous: Yes  
Permitted: Yes  
Wet space: No  
Addition: No  
Conversion: No

## 11 Floor 2 - Hall



Dimensions: 4'7" x 25'6"  
Area: 113 sq. ft  
Counted as living area: Yes

Heated: Yes  
Finished: Yes  
Enclosed: Yes  
Contiguous: Yes  
Permitted: Yes  
Wet space: No  
Addition: No  
Conversion: No



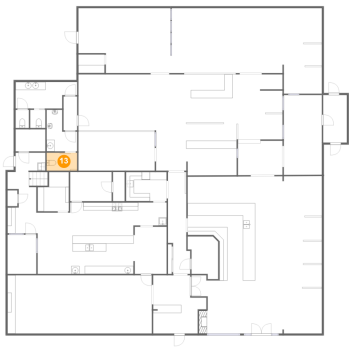
12 Floor 2 - Room



Dimensions: 6'6" x 4'8"  
Area: 30 sq. ft  
Counted as living area: Yes

Heated: Yes  
Finished: Yes  
Enclosed: Yes  
Contiguous: Yes  
Permitted: Yes  
Wet space: No  
Addition: No  
Conversion: No

13 Floor 2 - WC



Dimensions: 7'7" x 4'6"  
Area: 34 sq. ft  
Counted as living area: Yes

Heated: Yes  
Finished: Yes  
Enclosed: Yes  
Contiguous: Yes  
Permitted: Yes  
Wet space: No  
Addition: No  
Conversion: No

14 Floor 2 - Room



Dimensions: 10'2" x 7'3"  
Area: 74 sq. ft  
Counted as living area: Yes

Heated: Yes  
Finished: Yes  
Enclosed: Yes  
Contiguous: Yes  
Permitted: Yes  
Wet space: No  
Addition: No  
Conversion: No

15 Floor 2 - WC



Dimensions: 3'9" x 4'6"  
Area: 17 sq. ft  
Counted as living area: Yes

Heated: Yes  
Finished: Yes  
Enclosed: Yes  
Contiguous: Yes  
Permitted: Yes  
Wet space: No  
Addition: No  
Conversion: No

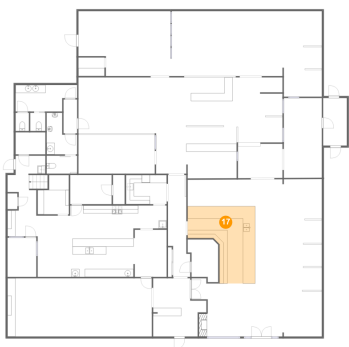
16 Floor 2 - WC



Dimensions: 7'7" x 10'5"  
Area: 59 sq. ft  
Counted as living area: Yes

Heated: Yes  
Finished: Yes  
Enclosed: Yes  
Contiguous: Yes  
Permitted: Yes  
Wet space: Yes  
Addition: No  
Conversion: No

17 Floor 2 - Counter



Dimensions: 16'11" x 19'4"  
Area: 237 sq. ft  
Counted as living area: No

Heated: No  
Finished: No  
Enclosed: No  
Contiguous: Yes  
Permitted: No  
Wet space: No  
Addition: No  
Conversion: No

18 Floor 2 - Pantry



Dimensions: 7'10" x 9'10"  
Area: 66 sq. ft  
Counted as living area: Yes

Heated: Yes  
Finished: Yes  
Enclosed: Yes  
Contiguous: Yes  
Permitted: Yes  
Wet space: No  
Addition: No  
Conversion: No

19 Floor 2 - Hall



Dimensions: 3'5" x 8'5"  
Area: 29 sq. ft  
Counted as living area: Yes

Heated: Yes  
Finished: Yes  
Enclosed: Yes  
Contiguous: Yes  
Permitted: Yes  
Wet space: No  
Addition: No  
Conversion: No

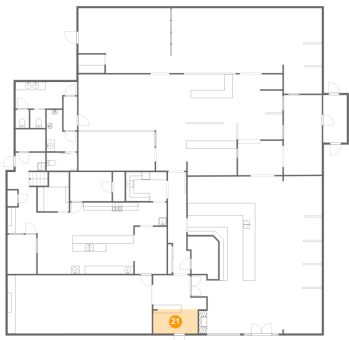
20 Floor 2 - Hall



Dimensions: 13'4" x 8'6"  
Area: 91 sq. ft  
Counted as living area: Yes

Heated: Yes  
Finished: Yes  
Enclosed: Yes  
Contiguous: Yes  
Permitted: Yes  
Wet space: No  
Addition: No  
Conversion: No

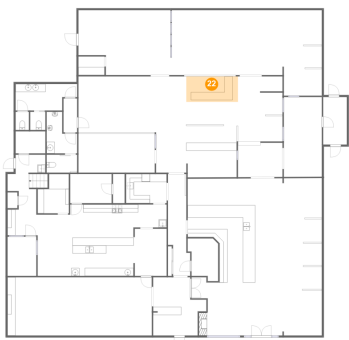
21 Floor 2 - Bar



Dimensions: 11'1" x 6'1"  
Area: 67 sq. ft  
Counted as living area: Yes

Heated: Yes  
Finished: Yes  
Enclosed: Yes  
Contiguous: Yes  
Permitted: Yes  
Wet space: No  
Addition: No  
Conversion: No

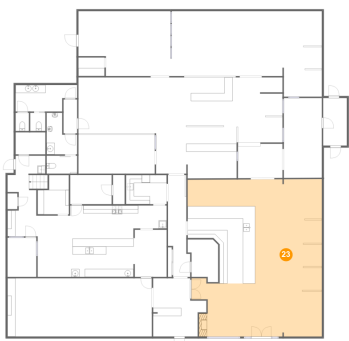
22 Floor 2 - Bar



Dimensions: 12'11" x 6'5"  
Area: 82 sq. ft  
Counted as living area: Yes

Heated: Yes  
Finished: Yes  
Enclosed: Yes  
Contiguous: Yes  
Permitted: Yes  
Wet space: No  
Addition: No  
Conversion: No

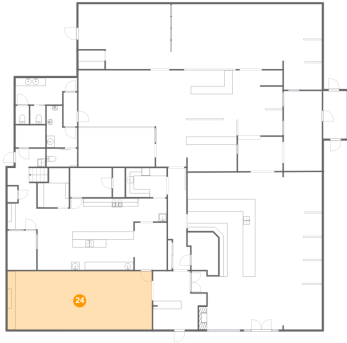
23 Floor 2 - Serving Area



Dimensions: 33'7" x 39'4"  
Area: 959 sq. ft  
Counted as living area: Yes

Heated: Yes  
Finished: Yes  
Enclosed: Yes  
Contiguous: Yes  
Permitted: Yes  
Wet space: No  
Addition: No  
Conversion: No

## 24 Floor 2 - Serving Area



Dimensions: 36'2" x 14'7"  
Area: 526 sq. ft  
Counted as living area: Yes

Heated: Yes  
Finished: Yes  
Enclosed: Yes  
Contiguous: Yes  
Permitted: Yes  
Wet space: No  
Addition: No  
Conversion: No

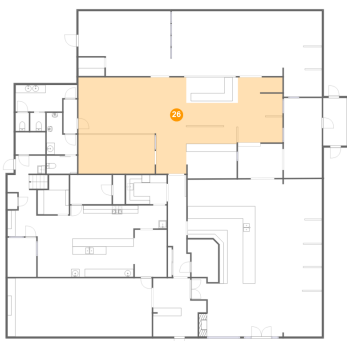
## 25 Floor 2 - Room



Dimensions: 7'8" x 10'8"  
Area: 68 sq. ft  
Counted as living area: Yes

Heated: Yes  
Finished: Yes  
Enclosed: Yes  
Contiguous: Yes  
Permitted: Yes  
Wet space: No  
Addition: No  
Conversion: No

## 26 Floor 2 - Serving Area



Dimensions: 51'1" x 24'1"  
Area: 959 sq. ft  
Counted as living area: Yes

Heated: Yes  
Finished: Yes  
Enclosed: Yes  
Contiguous: Yes  
Permitted: Yes  
Wet space: No  
Addition: No  
Conversion: No

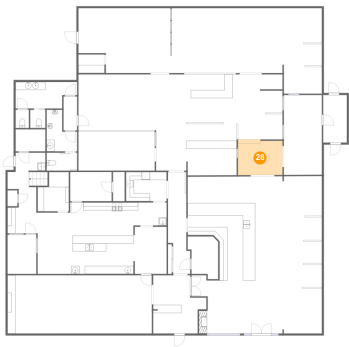
27 Floor 2 - WC



Dimensions: 3'4" x 4'6"  
Area: 15 sq. ft  
Counted as living area: Yes

Heated: Yes  
Finished: Yes  
Enclosed: Yes  
Contiguous: Yes  
Permitted: Yes  
Wet space: No  
Addition: No  
Conversion: No

28 Floor 2 - Hall



Dimensions: 11'1" x 8'6"  
Area: 98 sq. ft  
Counted as living area: Yes

Heated: Yes  
Finished: Yes  
Enclosed: Yes  
Contiguous: Yes  
Permitted: Yes  
Wet space: No  
Addition: No  
Conversion: No

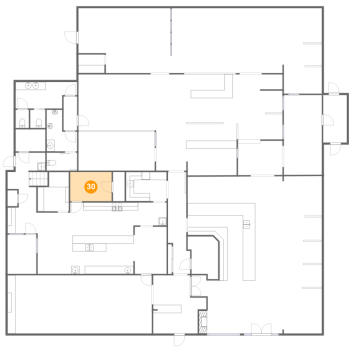
29 Floor 2 - WC



Dimensions: 15'4" x 6'8"  
Area: 90 sq. ft  
Counted as living area: Yes

Heated: Yes  
Finished: Yes  
Enclosed: Yes  
Contiguous: Yes  
Permitted: Yes  
Wet space: Yes  
Addition: No  
Conversion: No

30 Floor 2 - Room



Dimensions: 10'5" x 7'3"  
Area: 76 sq. ft  
Counted as living area: Yes

Heated: Yes  
Finished: Yes  
Enclosed: Yes  
Contiguous: Yes  
Permitted: Yes  
Wet space: No  
Addition: No  
Conversion: No

31 Floor 2 - Entry



Dimensions: 5'11" x 11'11"  
Area: 71 sq. ft  
Counted as living area: Yes

Heated: Yes  
Finished: Yes  
Enclosed: Yes  
Contiguous: Yes  
Permitted: Yes  
Wet space: No  
Addition: No  
Conversion: No

32 Floor 2 - Serving Area



Dimensions: 60'11" x 21'5"  
Area: 1003 sq. ft  
Counted as living area: Yes

Heated: Yes  
Finished: Yes  
Enclosed: Yes  
Contiguous: Yes  
Permitted: Yes  
Wet space: No  
Addition: No  
Conversion: No

33 Floor 2 - Room



Dimensions: 9'6" x 19'11"  
Area: 190 sq. ft  
Counted as living area: Yes

Heated: Yes  
Finished: Yes  
Enclosed: Yes  
Contiguous: Yes  
Permitted: Yes  
Wet space: No  
Addition: No  
Conversion: No

34 Floor 2 - Office



Dimensions: 7'2" x 9'10"  
Area: 71 sq. ft  
Counted as living area: Yes

Heated: Yes  
Finished: Yes  
Enclosed: Yes  
Contiguous: Yes  
Permitted: Yes  
Wet space: No  
Addition: No  
Conversion: No