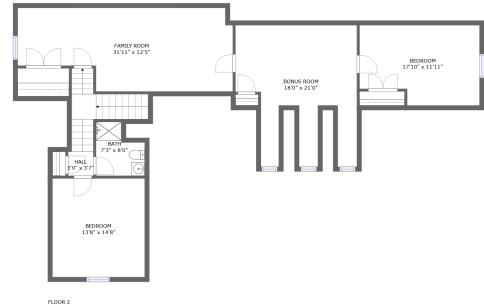
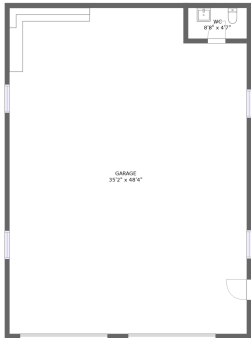



# 113 Lev Drive, Hazel Green, Madison County, Alabama, United States, 35750




## Property summary


 **2** Garages

 **5** Bedrooms

 **3** Bathrooms

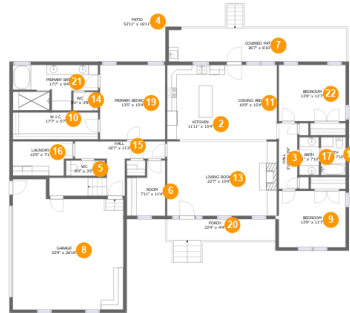
 **2** Half baths

 **2** Floors

 **3,437** Gross living area sqft

 **6,841** Total sqft

# 113 Lev Drive, Hazel Green, Madison County, Alabama, United States, 35750



## Room dimensions

Floor 1

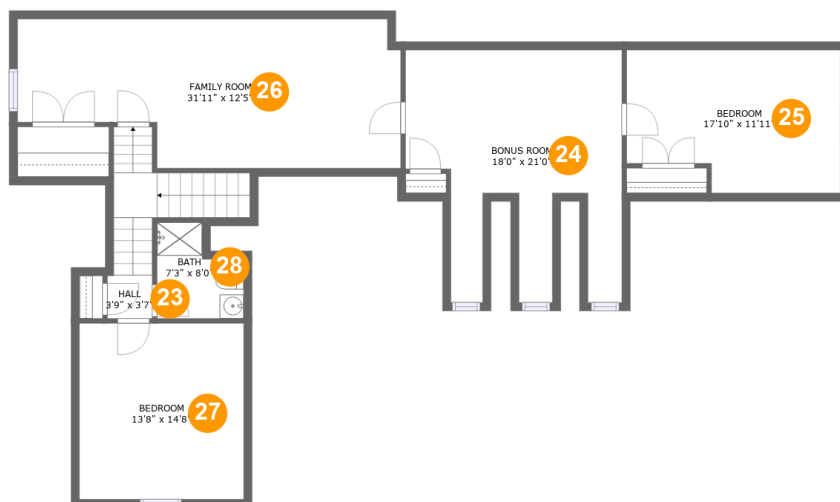
Total sqft: 5390 Living area: 2241

#		Dimensions	sqft	Counted as living area
1	WC	8'8" x 4'7"	40 sq. ft	No
2	Kitchen	11'11" x 15'4"	182 sq. ft	Yes
3	Hall	3'10" x 13'6"	52 sq. ft	Yes
4	Patio	53'11" x 16'11"	342 sq. ft	No
5	WC	8'0" x 3'2"	25 sq. ft	Yes
6	Room	7'11" x 11'4"	75 sq. ft	Yes
7	Covered Patio	36'7" x 6'10"	267 sq. ft	No
8	Garage	22'9" x 26'10"	546 sq. ft	No
9	Bedroom	13'9" x 11'7"	160 sq. ft	Yes
10	W.I.C.	17'7" x 5'7"	97 sq. ft	Yes
11	Dining Area	10'9" x 15'4"	164 sq. ft	Yes

**113 Lev Drive, Hazel Green, Madison County,  
Alabama, United States, 35750**

#		Dimensions	sqft	Counted as living area
12	Garage	35'2" x 48'4"	1653 sq. ft	No
13	Living Room	22'7" x 15'4"	346 sq. ft	Yes
14	WC	5'1" x 3'9"	19 sq. ft	Yes
15	Hall	18'7" x 11'2"	138 sq. ft	Yes
16	Laundry	12'5" x 7'1"	81 sq. ft	Yes
17	Bath	4'1" x 7'10"	32 sq. ft	Yes
18	Bath	5'1" x 7'10"	40 sq. ft	Yes
19	Primary Bedroom	13'5" x 15'4"	205 sq. ft	Yes
20	Porch	22'4" x 4'4"	123 sq. ft	No
21	Primary Bath	17'7" x 9'4"	138 sq. ft	Yes
22	Bedroom	13'9" x 11'7"	159 sq. ft	Yes

# 113 Lev Drive, Hazel Green, Madison County, Alabama, United States, 35750



## Room dimensions

Floor 2

Total sqft: 1451 Living area: 1196

#		Dimensions	sqft	Counted as living area
23	Hall	3'9" x 3'7"	83 sq. ft	Yes
24	Bonus Room	18'0" x 21'0"	282 sq. ft	Yes
25	Bedroom	17'10" x 11'11"	194 sq. ft	Yes
26	Family Room	31'11" x 12'5"	267 sq. ft	Yes
27	Bedroom	13'8" x 14'8"	121 sq. ft	Yes
28	Bath	7'3" x 8'0"	47 sq. ft	Yes

# 113 Lev Drive, Hazel Green, Madison County, Alabama, United States, 35750

## 1 Floor 1 - WC



**Dimensions:** 8'8" x 4'7"  
**Area:** 40 sq. ft  
**Counted as living area:** No

**Heated:** Yes  
**Finished:** Yes  
**Enclosed:** Yes  
**Contiguous:** No  
**Permitted:** Yes  
**Wet space:** Yes  
**Addition:** No  
**Conversion:** No

## 2 Floor 1 - Kitchen

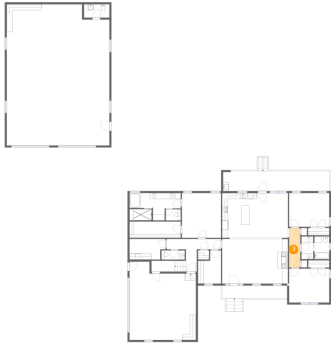


**Dimensions:** 11'11" x 15'4"  
**Area:** 182 sq. ft  
**Counted as living area:** Yes

**Heated:** Yes  
**Finished:** Yes  
**Enclosed:** Yes  
**Contiguous:** Yes  
**Permitted:** Yes  
**Wet space:** No  
**Addition:** No  
**Conversion:** No

# 113 Lev Drive, Hazel Green, Madison County, Alabama, United States, 35750

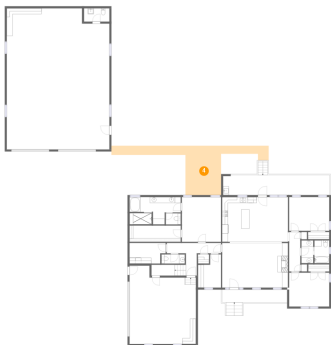
## 3 Floor 1 - Hall



Dimensions: 3'10" x 13'6"  
Area: 52 sq. ft  
Counted as living area: Yes

Heated: Yes  
Finished: Yes  
Enclosed: Yes  
Contiguous: Yes  
Permitted: Yes  
Wet space: No  
Addition: No  
Conversion: No

## 4 Floor 1 - Patio



Dimensions: 53'11" x 16'11"  
Area: 342 sq. ft  
Counted as living area: No

Heated: No  
Finished: Yes  
Enclosed: No  
Contiguous: Yes  
Permitted: Yes  
Wet space: No  
Addition: No  
Conversion: No

## 5 Floor 1 - WC



Dimensions: 8'0" x 3'2"  
Area: 25 sq. ft  
Counted as living area: Yes

Heated: Yes  
Finished: Yes  
Enclosed: Yes  
Contiguous: Yes  
Permitted: Yes  
Wet space: Yes  
Addition: No  
Conversion: No

# 113 Lev Drive, Hazel Green, Madison County, Alabama, United States, 35750

## 6 Floor 1 - Room



Dimensions: 7'11" x 11'4"  
Area: 75 sq. ft  
Counted as living area: Yes

Heated: Yes  
Finished: Yes  
Enclosed: Yes  
Contiguous: Yes  
Permitted: Yes  
Wet space: No  
Addition: No  
Conversion: No

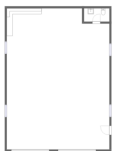
## 7 Floor 1 - Covered Patio



Dimensions: 36'7" x 6'10"  
Area: 267 sq. ft  
Counted as living area: No

Heated: No  
Finished: Yes  
Enclosed: No  
Contiguous: Yes  
Permitted: Yes  
Wet space: No  
Addition: No  
Conversion: No

## 8 Floor 1 - Garage

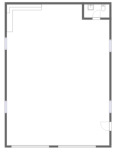


Dimensions: 22'9" x 26'10"  
Area: 546 sq. ft  
Counted as living area: No

Heated: No  
Finished: No  
Enclosed: Yes  
Contiguous: Yes  
Permitted: Yes  
Wet space: No  
Addition: No  
Conversion: No

**113 Lev Drive, Hazel Green, Madison County,  
Alabama, United States, 35750**

**9 Floor 1 - Bedroom**



**Dimensions:** 13'9" x 11'7"  
**Area:** 160 sq. ft  
**Counted as living area:** Yes

**Heated:** Yes  
**Finished:** Yes  
**Enclosed:** Yes  
**Contiguous:** Yes  
**Permitted:** Yes  
**Wet space:** No  
**Addition:** No  
**Conversion:** No

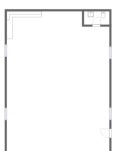
**10 Floor 1 - W.I.C.**



**Dimensions:** 17'7" x 5'7"  
**Area:** 97 sq. ft  
**Counted as living area:** Yes

**Heated:** Yes  
**Finished:** Yes  
**Enclosed:** Yes  
**Contiguous:** Yes  
**Permitted:** Yes  
**Wet space:** No  
**Addition:** No  
**Conversion:** No

**11 Floor 1 - Dining Area**



**Dimensions:** 10'9" x 15'4"  
**Area:** 164 sq. ft  
**Counted as living area:** Yes

**Heated:** Yes  
**Finished:** Yes  
**Enclosed:** Yes  
**Contiguous:** Yes  
**Permitted:** Yes  
**Wet space:** No  
**Addition:** No  
**Conversion:** No



# 113 Lev Drive, Hazel Green, Madison County, Alabama, United States, 35750

## 12 Floor 1 - Garage



Dimensions: 35'2" x 48'4"  
Area: 1653 sq. ft  
Counted as living area: No

Heated: No  
Finished: No  
Enclosed: Yes  
Contiguous: Yes  
Permitted: Yes  
Wet space: No  
Addition: No  
Conversion: No

## 13 Floor 1 - Living Room



Dimensions: 22'7" x 15'4"  
Area: 346 sq. ft  
Counted as living area: Yes

Heated: Yes  
Finished: Yes  
Enclosed: Yes  
Contiguous: Yes  
Permitted: Yes  
Wet space: No  
Addition: No  
Conversion: No

## 14 Floor 1 - WC



Dimensions: 5'1" x 3'9"  
Area: 19 sq. ft  
Counted as living area: Yes

Heated: Yes  
Finished: Yes  
Enclosed: Yes  
Contiguous: Yes  
Permitted: Yes  
Wet space: No  
Addition: No  
Conversion: No

# 113 Lev Drive, Hazel Green, Madison County, Alabama, United States, 35750

## 15 Floor 1 - Hall



Dimensions: 18'7" x 11'2"  
Area: 138 sq. ft  
Counted as living area: Yes

Heated: Yes  
Finished: Yes  
Enclosed: Yes  
Contiguous: Yes  
Permitted: Yes  
Wet space: No  
Addition: No  
Conversion: No

## 16 Floor 1 - Laundry



Dimensions: 12'5" x 7'1"  
Area: 81 sq. ft  
Counted as living area: Yes

Heated: Yes  
Finished: Yes  
Enclosed: Yes  
Contiguous: Yes  
Permitted: Yes  
Wet space: No  
Addition: No  
Conversion: No

## 17 Floor 1 - Bath



Dimensions: 4'1" x 7'10"  
Area: 32 sq. ft  
Counted as living area: Yes

Heated: Yes  
Finished: Yes  
Enclosed: Yes  
Contiguous: Yes  
Permitted: Yes  
Wet space: Yes  
Addition: No  
Conversion: No

# 113 Lev Drive, Hazel Green, Madison County, Alabama, United States, 35750

## 18 Floor 1 - Bath



Dimensions: 5'1" x 7'10"  
Area: 40 sq. ft  
Counted as living area: Yes

Heated: Yes  
Finished: Yes  
Enclosed: Yes  
Contiguous: Yes  
Permitted: Yes  
Wet space: Yes  
Addition: No  
Conversion: No

## 19 Floor 1 - Primary Bedroom



Dimensions: 13'5" x 15'4"  
Area: 205 sq. ft  
Counted as living area: Yes

Heated: Yes  
Finished: Yes  
Enclosed: Yes  
Contiguous: Yes  
Permitted: Yes  
Wet space: No  
Addition: No  
Conversion: No

## 20 Floor 1 - Porch

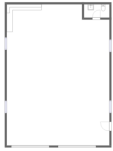


Dimensions: 22'4" x 4'4"  
Area: 123 sq. ft  
Counted as living area: No

Heated: No  
Finished: Yes  
Enclosed: No  
Contiguous: Yes  
Permitted: Yes  
Wet space: No  
Addition: No  
Conversion: No

# 113 Lev Drive, Hazel Green, Madison County, Alabama, United States, 35750

## 21 Floor 1 - Primary Bath



Dimensions: 17'7" x 9'4"  
Area: 138 sq. ft  
Counted as living area: Yes

Heated: Yes  
Finished: Yes  
Enclosed: Yes  
Contiguous: Yes  
Permitted: Yes  
Wet space: Yes  
Addition: No  
Conversion: No

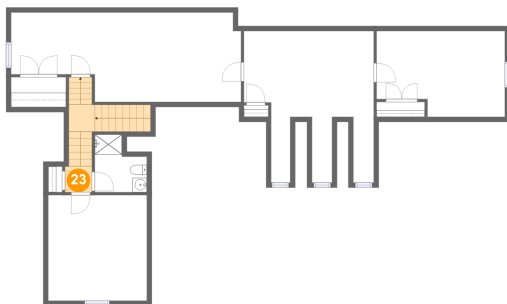
## 22 Floor 1 - Bedroom



Dimensions: 13'9" x 11'7"  
Area: 159 sq. ft  
Counted as living area: Yes

Heated: Yes  
Finished: Yes  
Enclosed: Yes  
Contiguous: Yes  
Permitted: Yes  
Wet space: No  
Addition: No  
Conversion: No

## 23 Floor 2 - Hall

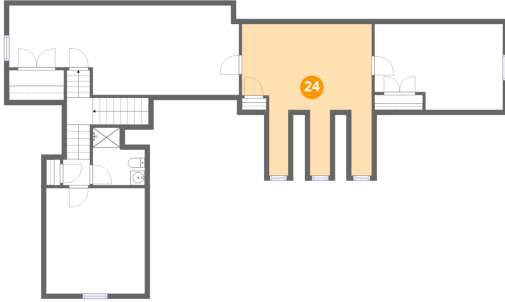


Dimensions: 3'9" x 3'7"  
Area: 83 sq. ft  
Counted as living area: Yes

Heated: Yes  
Finished: Yes  
Enclosed: Yes  
Contiguous: Yes  
Permitted: Yes  
Wet space: No  
Addition: No  
Conversion: No

**113 Lev Drive, Hazel Green, Madison County,  
Alabama, United States, 35750**

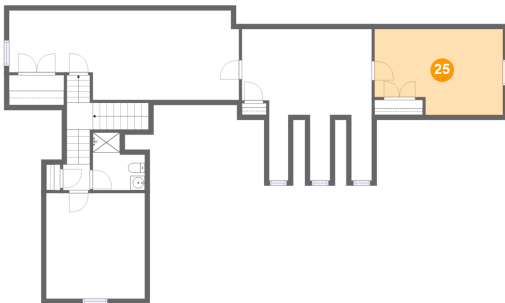
**24 Floor 2 - Bonus Room**



**Dimensions: 18'0" x 21'0"**  
**Area: 282 sq. ft**  
**Counted as living area: Yes**

**Heated: Yes**  
**Finished: Yes**  
**Enclosed: Yes**  
**Contiguous: Yes**  
**Permitted: Yes**  
**Wet space: No**  
**Addition: No**  
**Conversion: No**

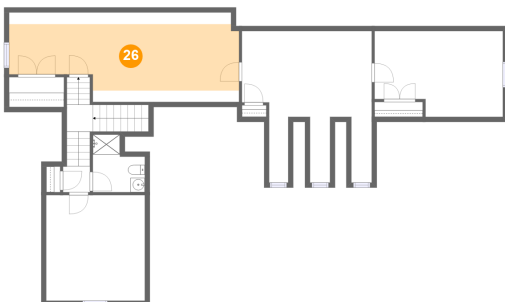
**25 Floor 2 - Bedroom**



**Dimensions: 17'10" x 11'11"**  
**Area: 194 sq. ft**  
**Counted as living area: Yes**

**Heated: Yes**  
**Finished: Yes**  
**Enclosed: Yes**  
**Contiguous: Yes**  
**Permitted: Yes**  
**Wet space: No**  
**Addition: No**  
**Conversion: No**

**26 Floor 2 - Family Room**

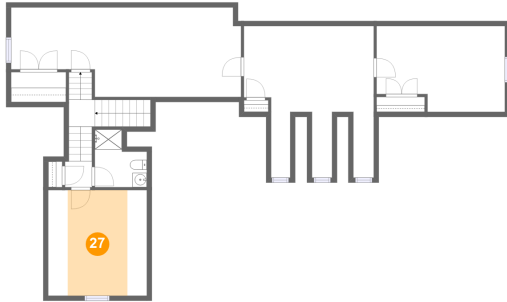


**Dimensions: 31'11" x 12'5"**  
**Area: 267 sq. ft**  
**Counted as living area: Yes**

**Heated: Yes**  
**Finished: Yes**  
**Enclosed: Yes**  
**Contiguous: Yes**  
**Permitted: Yes**  
**Wet space: No**  
**Addition: No**  
**Conversion: No**

**113 Lev Drive, Hazel Green, Madison County,  
Alabama, United States, 35750**

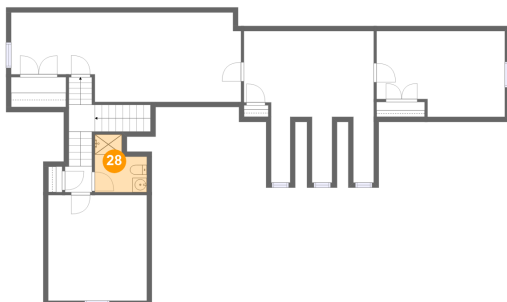
**27 Floor 2 - Bedroom**



Dimensions: 13'8" x 14'8"  
Area: 121 sq. ft  
Counted as living area: Yes

Heated: Yes  
Finished: Yes  
Enclosed: Yes  
Contiguous: Yes  
Permitted: Yes  
Wet space: No  
Addition: No  
Conversion: No

**28 Floor 2 - Bath**



Dimensions: 7'3" x 8'0"  
Area: 47 sq. ft  
Counted as living area: Yes

Heated: Yes  
Finished: Yes  
Enclosed: Yes  
Contiguous: Yes  
Permitted: Yes  
Wet space: Yes  
Addition: No  
Conversion: No