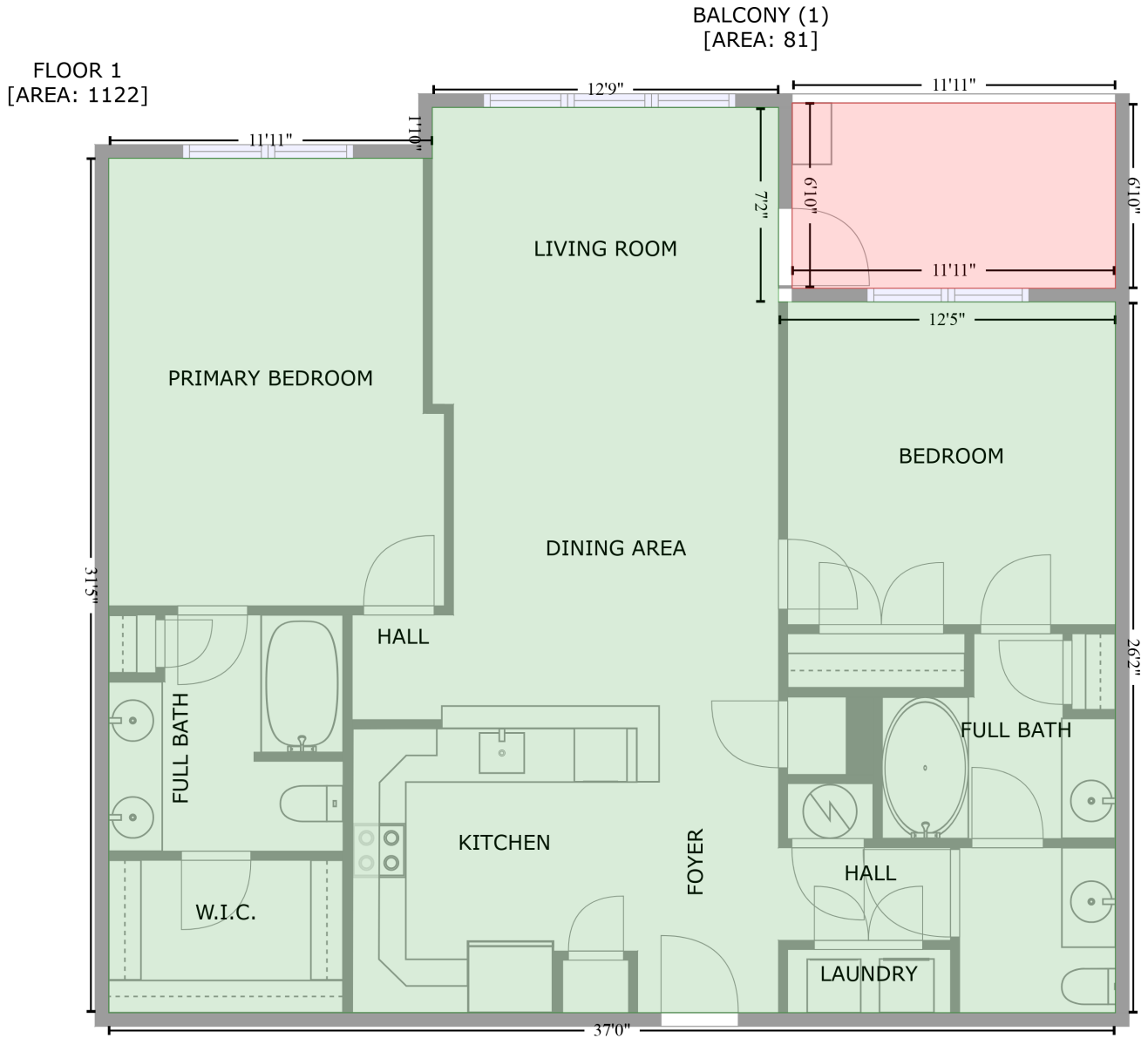


1000 E Woodlawn Rd, Apt #402, Charlotte, NC, US, Apt #402

Gross Living Area: 1122 sq. ft



Space	Area (sq. ft)	Calculation <small>Coordinate Polygon Area Algorithm using inches</small>
FLOOR 1 (Living area)	1122	$-\left((302.4 + 302.4) * (18.9 - 104.7) + (302.4 + 451.1) * (104.7 - 104.7) + (451.1 + 451.1) * (104.7 - 418.5) + (451.1 + 6.7) * (418.5 - 418.5) + (6.7 + 6.7) * (418.5 - 41.3) + (6.7 + 149.5) * (41.3 - 41.3) + (149.5 + 149.5) * (41.3 - 18.9) + (149.5 + 302.4) * (18.9 - 18.9)\right) * 0.5 * 0.00694$
BALCONY (Non-living area)	81	$-\left((451.1 + 451.1) * (16.9 - 98.7) + (451.1 + 308.4) * (98.7 - 98.7) + (308.4 + 308.4) * (98.7 - 16.9) + (308.4 + 451.1) * (16.9 - 16.9)\right) * 0.5 * 0.00694$