



Home report


15418 Foxvale Way, Midlothian, Chesterfield County, Virginia,
United States, 23112





Property summary


 **1** Garages


 **4** Bedrooms

 **2** Bathrooms

 **1** Half baths

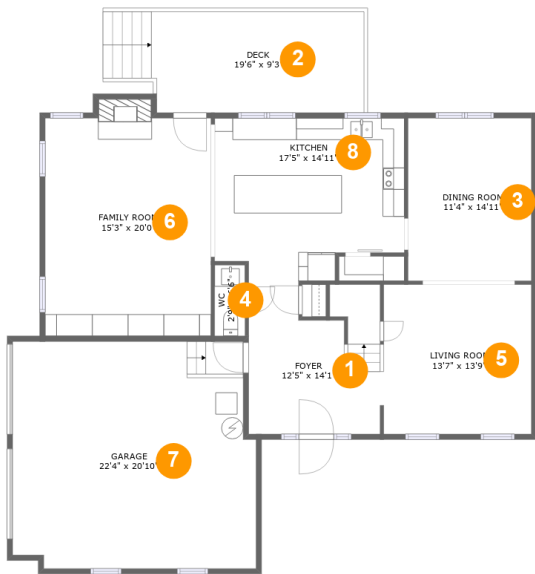
 **3** Floors

 **2,871** Gross living area sqft

 **3,657** Total sqft

Home report

15418 Foxvale Way, Midlothian, Chesterfield County, Virginia,
United States, 23112



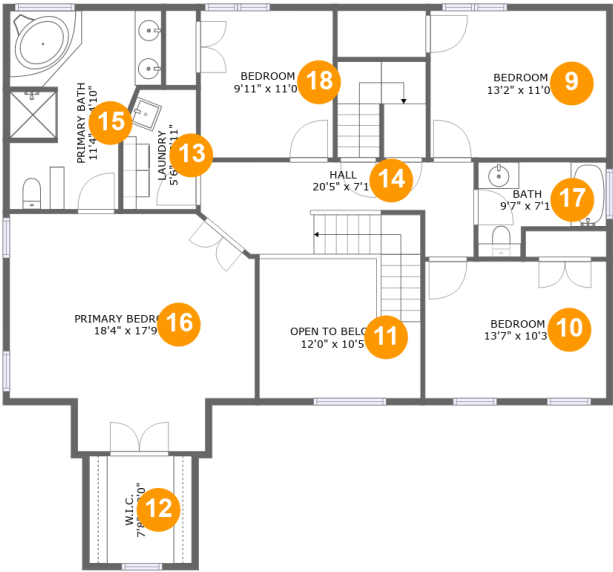
Room dimensions

Floor 1 Total sqft: 1869 Living area: 1199

#		Dimensions	sqft	Counted as living area
1	Foyer	12'5" x 14'1"	158 sq. ft	Yes
2	Deck	19'6" x 9'3"	179 sq. ft	No
3	Dining Room	11'4" x 14'11"	169 sq. ft	Yes
4	WC	2'9" x 6'6"	18 sq. ft	Yes
5	Living Room	13'7" x 13'9"	186 sq. ft	Yes
6	Family Room	15'3" x 20'0"	312 sq. ft	Yes
7	Garage	22'4" x 20'10"	451 sq. ft	No
8	Kitchen	17'5" x 14'11"	238 sq. ft	Yes

Home report

15418 Foxvale Way, Midlothian, Chesterfield County, Virginia,
United States, 23112

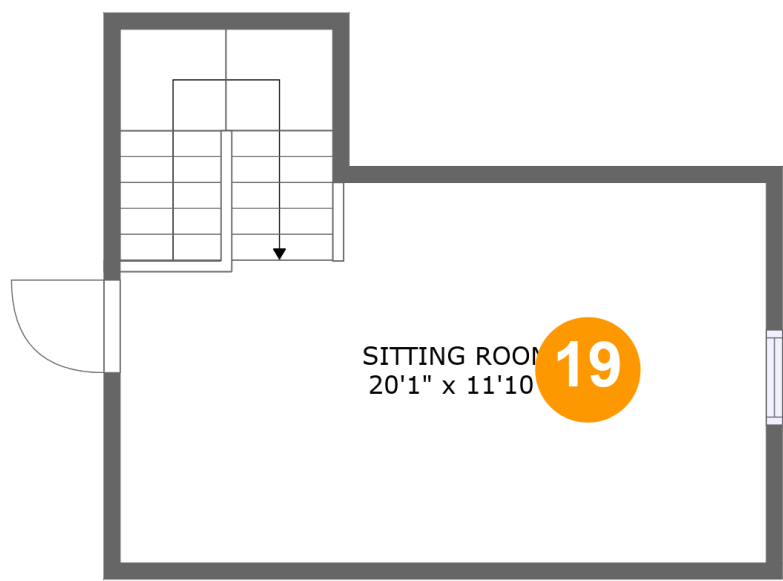


Room dimensions

Floor 2 Total sqft: 1481 Living area: 1365

#		Dimensions	sqft	Counted as living area
9	Bedroom	13'2" x 11'0"	145 sq. ft	Yes
10	Bedroom	13'7" x 10'3"	139 sq. ft	Yes
11	Open To Below	12'0" x 10'5"	110 sq. ft	No
12	W.I.C.	7'8" x 8'0"	62 sq. ft	Yes
13	Laundry	5'6" x 8'11"	47 sq. ft	Yes
14	Hall	20'5" x 7'1"	153 sq. ft	Yes
15	Primary Bath	11'4" x 14'10"	139 sq. ft	Yes
16	Primary Bedroom	18'4" x 17'9"	283 sq. ft	Yes
17	Bath	9'7" x 7'1"	53 sq. ft	Yes
18	Bedroom	9'11" x 11'0"	109 sq. ft	Yes

15418 Foxvale Way, Midlothian, Chesterfield County, Virginia,
United States, 23112



Room dimensions

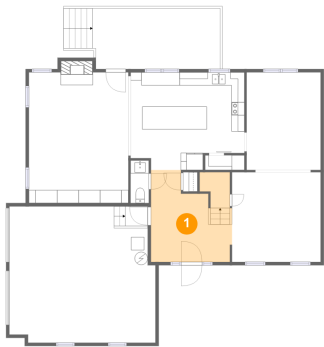
Floor 3

Total sqft: 307 Living area: 307

#		Dimensions	sqft	Counted as living area
19	Sitting Room	20'1" x 11'10"	270 sq. ft	Yes

15418 Foxvale Way, Midlothian, Chesterfield County, Virginia,
United States, 23112

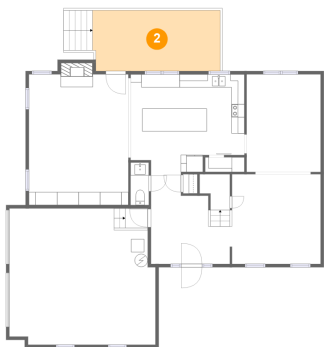
1 Floor 1 - Foyer



Dimensions: 12'5" x 14'1"
Area: 158 sq. ft
Counted as living area: Yes

Heated: Yes
Finished: Yes
Enclosed: Yes
Contiguous: Yes
Permitted: Yes
Wet space: No
Addition: No
Conversion: No

2 Floor 1 - Deck



Dimensions: 19'6" x 9'3"
Area: 179 sq. ft
Counted as living area: No

Heated: No
Finished: Yes
Enclosed: No
Contiguous: Yes
Permitted: Yes
Wet space: No
Addition: No
Conversion: No

15418 Foxvale Way, Midlothian, Chesterfield County, Virginia,
United States, 23112

3 Floor 1 - Dining Room



Dimensions: 11'4" x 14'11"
Area: 169 sq. ft
Counted as living area: Yes

Heated: Yes
Finished: Yes
Enclosed: Yes
Contiguous: Yes
Permitted: Yes
Wet space: No
Addition: No
Conversion: No

4 Floor 1 - WC



Dimensions: 2'9" x 6'6"
Area: 18 sq. ft
Counted as living area: Yes

Heated: Yes
Finished: Yes
Enclosed: Yes
Contiguous: Yes
Permitted: Yes
Wet space: Yes
Addition: No
Conversion: No

5 Floor 1 - Living Room

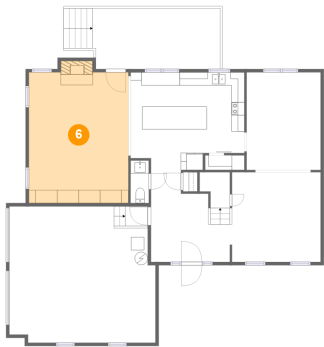


Dimensions: 13'7" x 13'9"
Area: 186 sq. ft
Counted as living area: Yes

Heated: Yes
Finished: Yes
Enclosed: Yes
Contiguous: Yes
Permitted: Yes
Wet space: No
Addition: No
Conversion: No

15418 Foxvale Way, Midlothian, Chesterfield County, Virginia,
United States, 23112

6 Floor 1 - Family Room



Dimensions: 15'3" x 20'0"
Area: 312 sq. ft
Counted as living area: Yes

Heated: Yes
Finished: Yes
Enclosed: Yes
Contiguous: Yes
Permitted: Yes
Wet space: No
Addition: No
Conversion: No

7 Floor 1 - Garage



Dimensions: 22'4" x 20'10"
Area: 451 sq. ft
Counted as living area: No

Heated: No
Finished: No
Enclosed: Yes
Contiguous: Yes
Permitted: Yes
Wet space: No
Addition: No
Conversion: No

8 Floor 1 - Kitchen



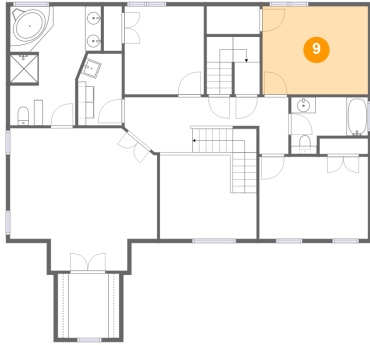
Dimensions: 17'5" x 14'11"
Area: 238 sq. ft
Counted as living area: Yes

Heated: Yes
Finished: Yes
Enclosed: Yes
Contiguous: Yes
Permitted: Yes
Wet space: No
Addition: No
Conversion: No

Home report

15418 Foxvale Way, Midlothian, Chesterfield County, Virginia,
United States, 23112

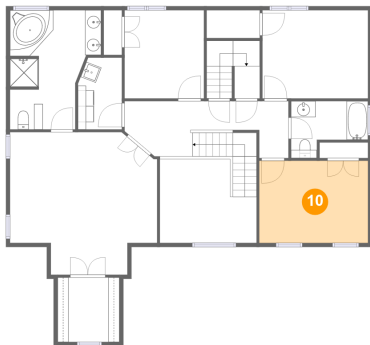
9 Floor 2 - Bedroom



Dimensions: 13'2" x 11'0"
Area: 145 sq. ft
Counted as living area: Yes

Heated: Yes
Finished: Yes
Enclosed: Yes
Contiguous: Yes
Permitted: Yes
Wet space: No
Addition: No
Conversion: No

10 Floor 2 - Bedroom



Dimensions: 13'7" x 10'3"
Area: 139 sq. ft
Counted as living area: Yes

Heated: Yes
Finished: Yes
Enclosed: Yes
Contiguous: Yes
Permitted: Yes
Wet space: No
Addition: No
Conversion: No

11 Floor 2 - Open To Below



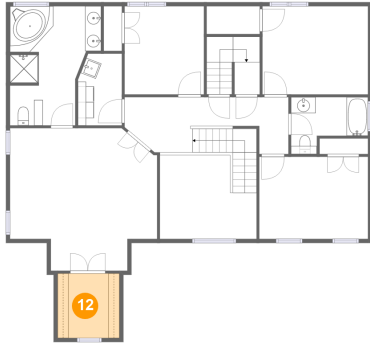
Dimensions: 12'0" x 10'5"
Area: 110 sq. ft
Counted as living area: No

Heated: No
Finished: No
Enclosed: No
Contiguous: Yes
Permitted: No
Wet space: No
Addition: No
Conversion: No

Home report

15418 Foxvale Way, Midlothian, Chesterfield County, Virginia,
United States, 23112

12 Floor 2 - W.I.C.



Dimensions: 7'8" x 8'0"
Area: 62 sq. ft
Counted as living area: Yes

Heated: Yes
Finished: Yes
Enclosed: Yes
Contiguous: Yes
Permitted: Yes
Wet space: No
Addition: No
Conversion: No

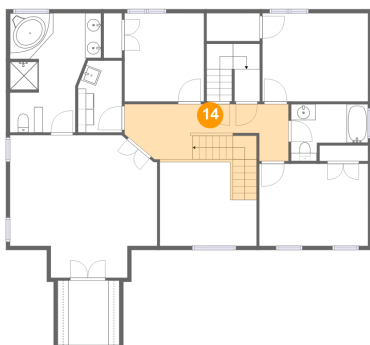
13 Floor 2 - Laundry



Dimensions: 5'6" x 8'11"
Area: 47 sq. ft
Counted as living area: Yes

Heated: Yes
Finished: Yes
Enclosed: Yes
Contiguous: Yes
Permitted: Yes
Wet space: No
Addition: No
Conversion: No

14 Floor 2 - Hall

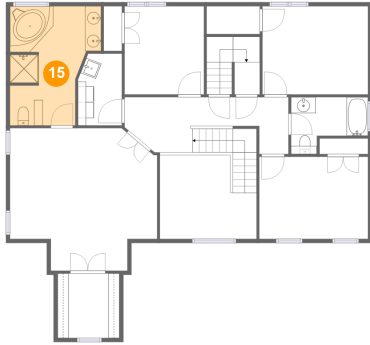


Dimensions: 20'5" x 7'1"
Area: 153 sq. ft
Counted as living area: Yes

Heated: Yes
Finished: Yes
Enclosed: Yes
Contiguous: Yes
Permitted: Yes
Wet space: No
Addition: No
Conversion: No

15418 Foxvale Way, Midlothian, Chesterfield County, Virginia,
United States, 23112

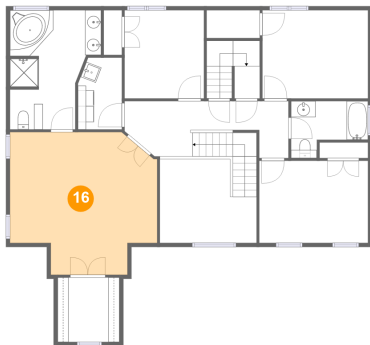
15 Floor 2 - Primary Bath



Dimensions: 11'4" x 14'10"
Area: 139 sq. ft
Counted as living area: Yes

Heated: Yes
Finished: Yes
Enclosed: Yes
Contiguous: Yes
Permitted: Yes
Wet space: Yes
Addition: No
Conversion: No

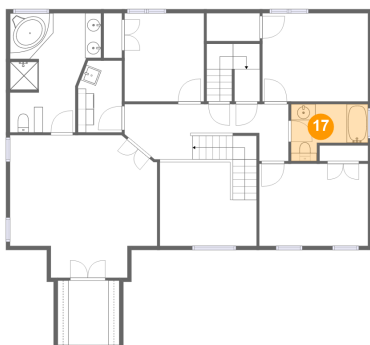
16 Floor 2 - Primary Bedroom



Dimensions: 18'4" x 17'9"
Area: 283 sq. ft
Counted as living area: Yes

Heated: Yes
Finished: Yes
Enclosed: Yes
Contiguous: Yes
Permitted: Yes
Wet space: No
Addition: No
Conversion: No

17 Floor 2 - Bath

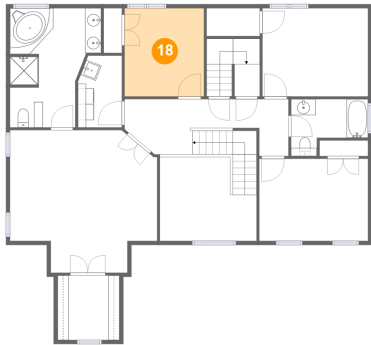


Dimensions: 9'7" x 7'1"
Area: 53 sq. ft
Counted as living area: Yes

Heated: Yes
Finished: Yes
Enclosed: Yes
Contiguous: Yes
Permitted: Yes
Wet space: Yes
Addition: No
Conversion: No

15418 Foxvale Way, Midlothian, Chesterfield County, Virginia,
United States, 23112

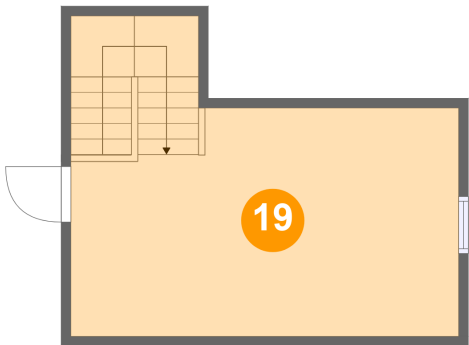
18 Floor 2 - Bedroom



Dimensions: 9'11" x 11'0"
Area: 109 sq. ft
Counted as living area: Yes

Heated: Yes
Finished: Yes
Enclosed: Yes
Contiguous: Yes
Permitted: Yes
Wet space: No
Addition: No
Conversion: No

19 Floor 3 - Sitting Room



Dimensions: 20'1" x 11'10"
Area: 270 sq. ft
Counted as living area: Yes

Heated: Yes
Finished: Yes
Enclosed: Yes
Contiguous: Yes
Permitted: Yes
Wet space: No
Addition: No
Conversion: No